

The EU-LAC Parliamentary Dialogue

Daniel Caspary MEP

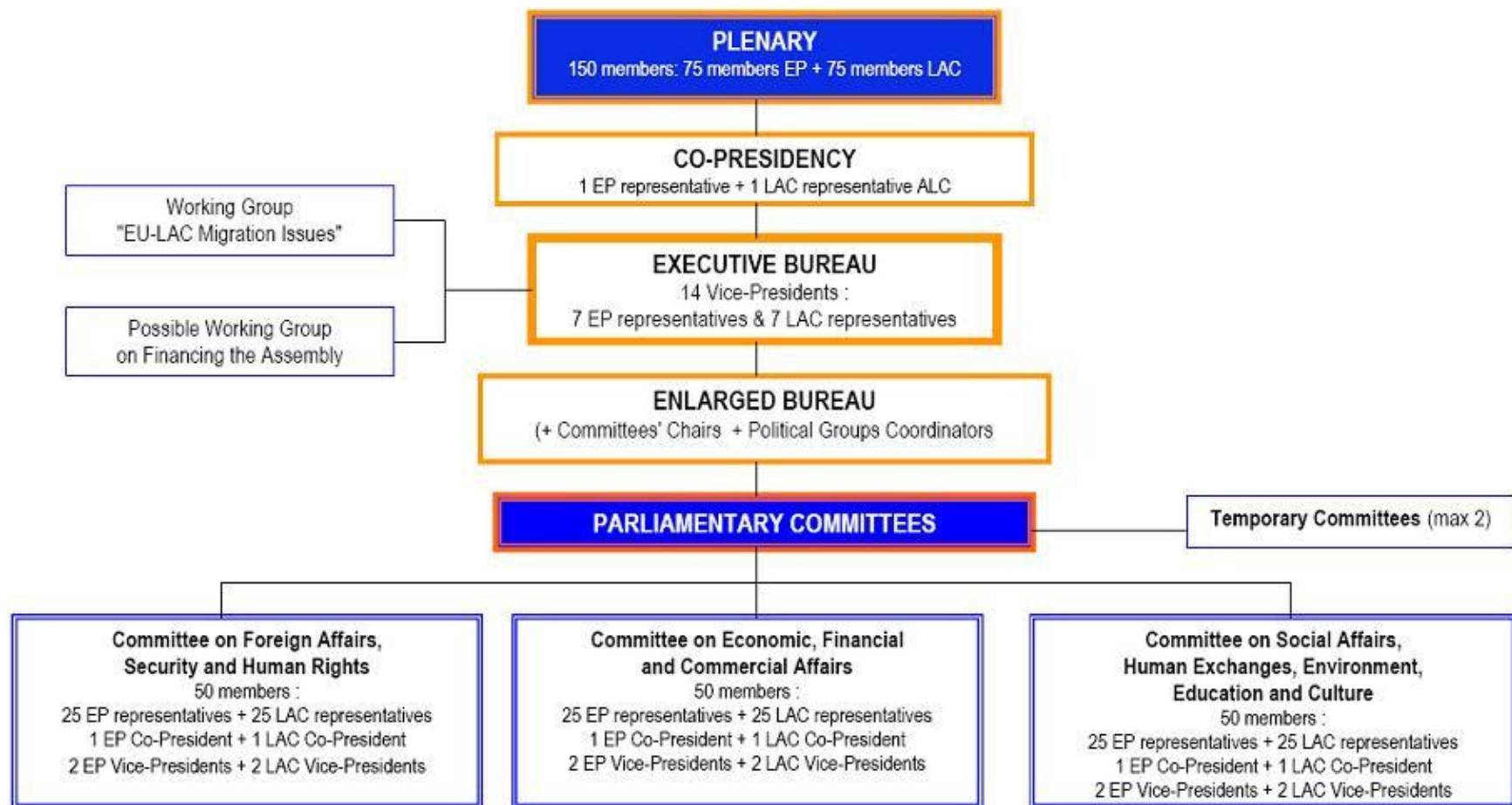
**Coordinator of the European People's Party (Christian Democrats)
in the Committee on International Trade**

What is EuroLat?

- **EuroLat is the parliamentary institution of the Bi-regional Strategic Association established in June 1999 in the context of the EU-LAC (European Union-Latin American and Caribbean) Summits**
- **Constituent Session on 8th & 9th October 2006 in Brussels**

EuroLat structure

ORGANISATION CHART OF THE EURO-LATIN AMERICAN PARLIAMENTARY ASSEMBLY (1)



Working practice and working fields

- **EuroLat** adopts and submits resolutions and recommendations to the various organizations, institutions and ministerial groups responsible for the development of the Bi-regional Strategic Association.
- **Main resolutions and recommendations**
 - Resolution of on Euro-Latin American Charter for Peace and Security (8 April 2009)
 - Urgent resolution on the Financial Crisis (8 April 2009)
 - Resolution of on European Union and Latin American energy policies (1 May 2008)
 - Resolution on Poverty and social exclusion (1 May 2008)
 - Resolution on Challenges and opportunities resulting from globalisation for the economic and trade relations between the EU and LA countries (20 December 2007)

Contemporary issues and meetings

- **6th EU-LAC Summit on the 18 May 2010 in Madrid**
- **WTO reform**
- **UNFCCC negotiations** (*United Nations Framework Convention on Climate Change*):
EU-LAC coordinated strategy
- **Next important meeting: Executive Bureau meeting and committees on 29-30 October 2009**

The importance of EU-LAC partnership

EU and LAC:

- **two spaces populated by more than 1 billion inhabitants**
- **more than 60 countries: almost a third of the member states of the United Nations**
- **one quarter of the world's GDP**

Challenges faced by the EU

- Short-term:

Financial and economic crisis

- Long-term:

Economic shift to the Pacific and Indian oceans

- Asia's growing importance as a key economic player
- 2060: 50% of the global GDP produced in China and India
- Deep changes in the economic, security, energy and environment, migration sectors.

Demographic changes

- 2050: 10% of Europeans older than 80 and 50% older than 65
- Populations predictions in 2050
 - Europe: from 490m to 470m
 - LAC: from 588m to 729m

Challenges faced by LAC

- **Dismemberment from the regional integration**
 - failure of the ALCA negotiations
 - disintegration of the Group of Three
 - Venezuela's retreat from the Andean Community of Nations
 - Tensions between LAC neighbouring countries
- **Inequality**
 - Despite important economic growth of the region, LAC remains the continent with the greatest social disparity

Contact Details

Daniel Caspary MEP

**Coordinator of the European People's Party (Christian Democrats)
in the Committee on International Trade**

Municipality office

Belchenstraße 27 – D-76297 Stutensee

Tel: +49 721 3848010 – Fax: +49 721 3848011

Brussels office

ASP 15 E 101 – European Parliament – B-1047 Brussels

Tel: +32 2 284-7978 – Fax: +32 2 284-9978

email: daniel@caspary.de

web: www.caspary.de