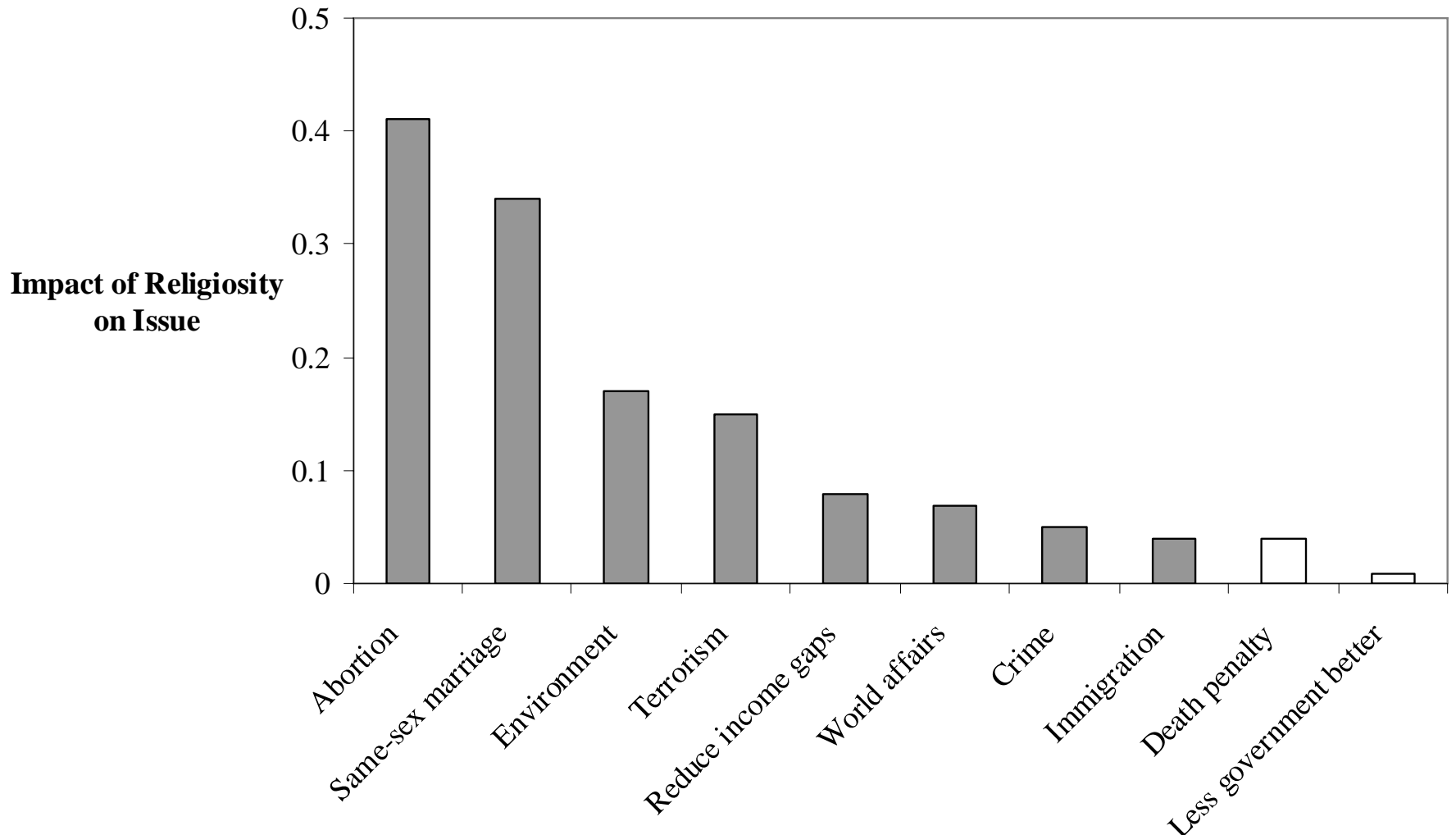


A Matter of Faith: Religion in American Presidential Campaigns

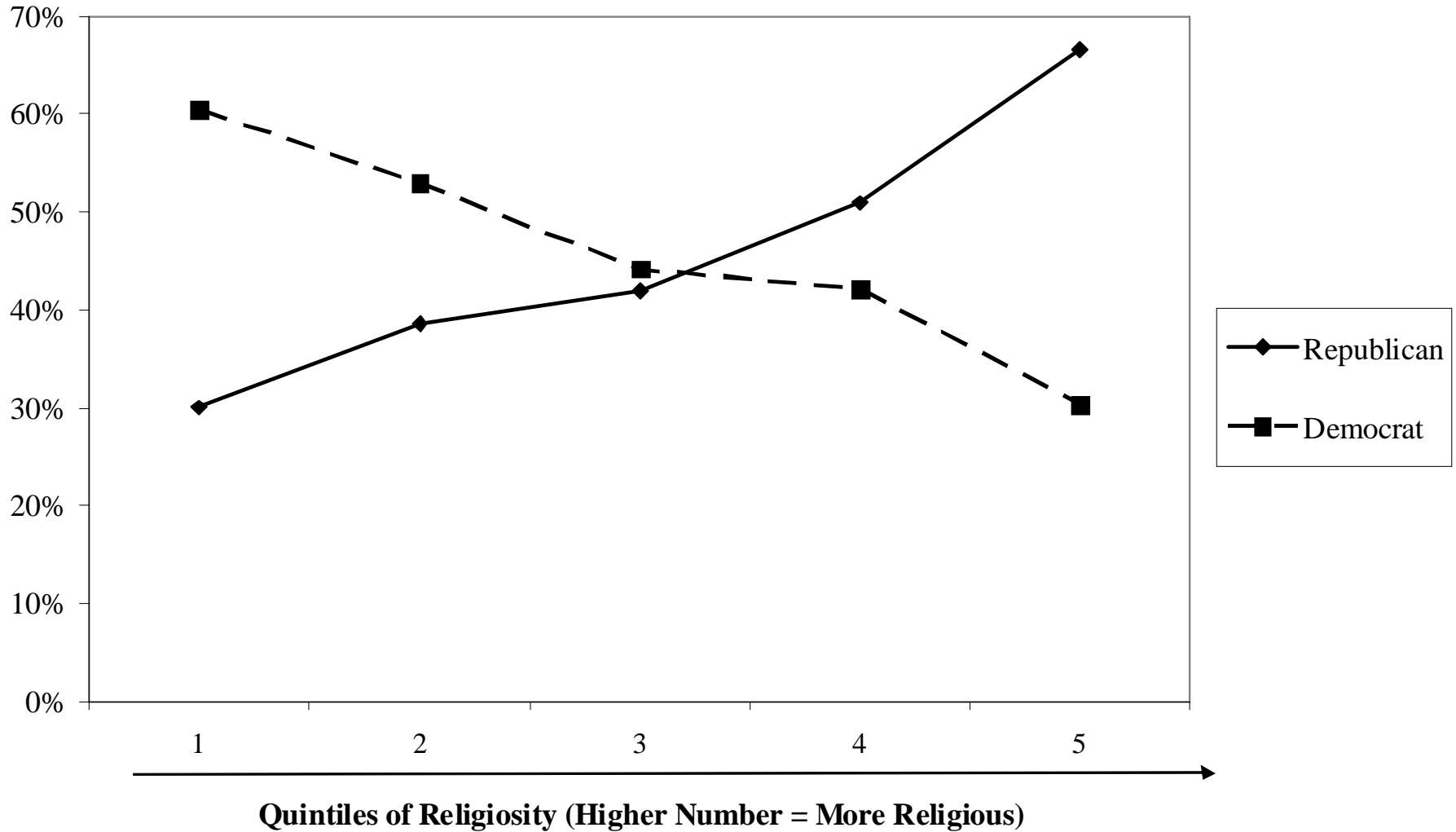
David E. Campbell
John Cardinal O'Hara Associate
Professor of Political Science
University of Notre Dame

Religiosity Has The Biggest Impact On Sex-and-Family Issues

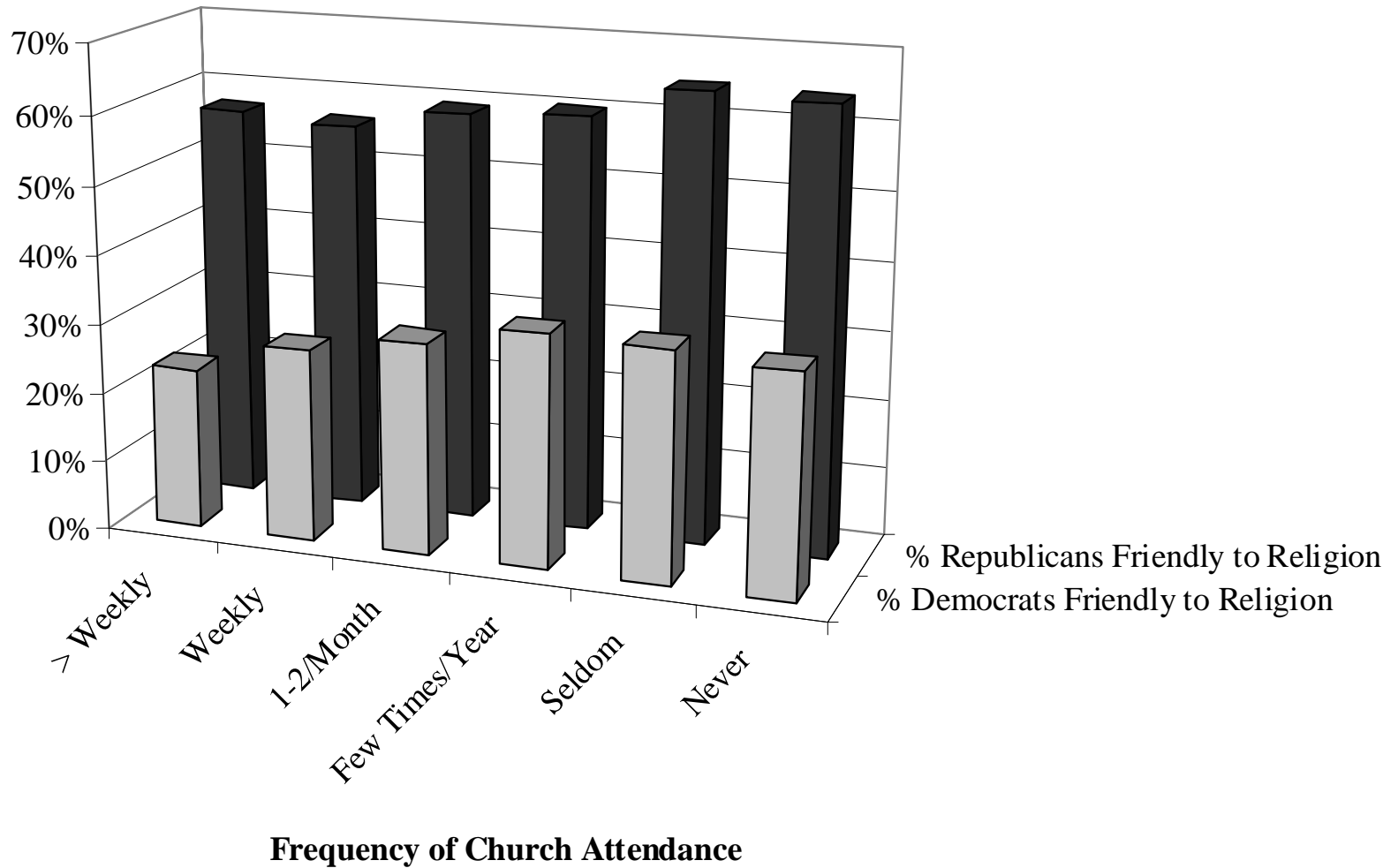


Impact of religiosity holding constant gender, age, education, living in the South, marital status, children under 18

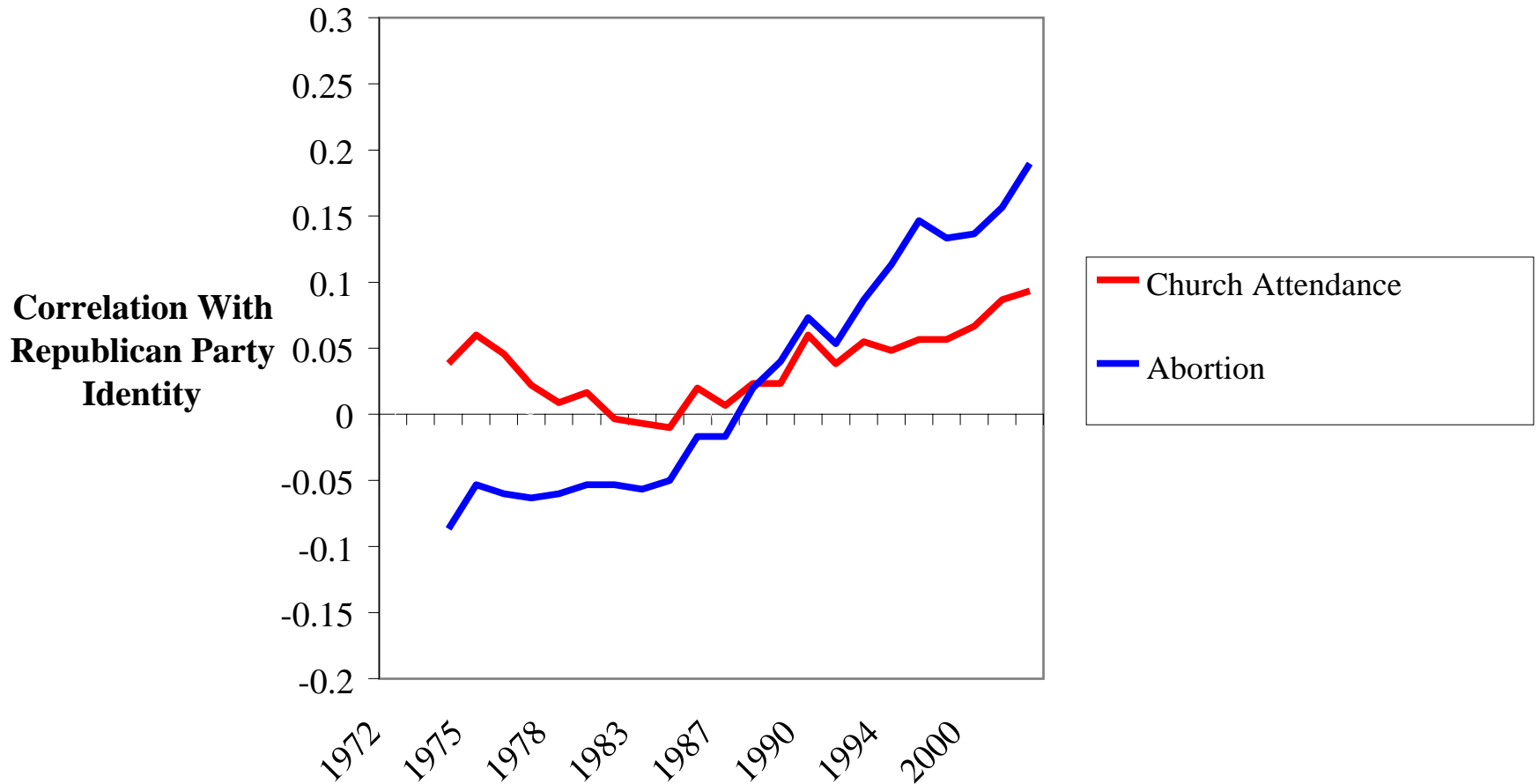
The God Gap: Republicans Have Higher Religiosity Than Democrats



Most Everyone Agrees That The Republicans Are Friendly To Religion



Abortion Attitudes and Church Attendance Have Become Increasingly Correlated With Republican Party Identity





REPUBLICANS BELIEVE IN AMERICA

We are the **ONLY** party that defends life...and **protects the unborn** from partial birth abortion.

We are the **ONLY** party you can trust to defend traditional marriage...**one man, one woman**.

We are the **ONLY** party that consistently supports **lower taxes for all Americans** – strengthening working families in Ohio.

We are the only party that consistently supports keeping the phrase “Under God” in the Pledge of Allegiance.

If you believe in these values, then we would ask for your vote for our Republican team.

Vote Republican On November 2.



Ohio Democratic Party Official Sample Ballot




Kerry Edwards

for President & Vice-President

 **Eric FINGERHUT**
for U.S. Senate



 **C. Ellen CONNALLY**
for Chief Justice



 **Nancy FUERST**
for Justice



 **William O'NEILL**
for Justice



You CAN take this into the voting booth on Election Day.



Medina County Democratic Party – Pam Miller, Chair - If you do not know where to vote, call (330) 722-9278.

John F. KERRY/John EDWARDS

for President and Vice President

Eric D. FINGERHUT

for United States Senator

Sherrod BROWN

for U.S. Representative 13th District

Jeff SEEMANN

for U.S. Representative 16th District

Tom BETTI

for State Representative 69th District

Thomas L. MASON

for State Representative 97th District

Jack SCHIRA

for County Commissioner
Term 1-2-2005

Linda HUDSON

for County Commissioner
Term 1-3-2005

Dean HOLMAN

for Prosecuting Attorney

Patricia HANEK

for County Recorder

Randy HELLER

for County Treasurer

Neil F. GRABENSTETTER

for County Coroner

C. Ellen CONNALLY

for Chief Justice Ohio Supreme Court
Term 1-1-2005

Nancy A. FUERST

for Justice Ohio Supreme Court
Term 1-1-2005

William M. O'NEILL

for Justice Ohio Supreme Court
Term End 12-31-2006

Carla D. MOORE

for Court of Appeals
2-9-2005

Eve BELFANCE

for Court of Appeals
2-10-2005

Deborah S. MATZ

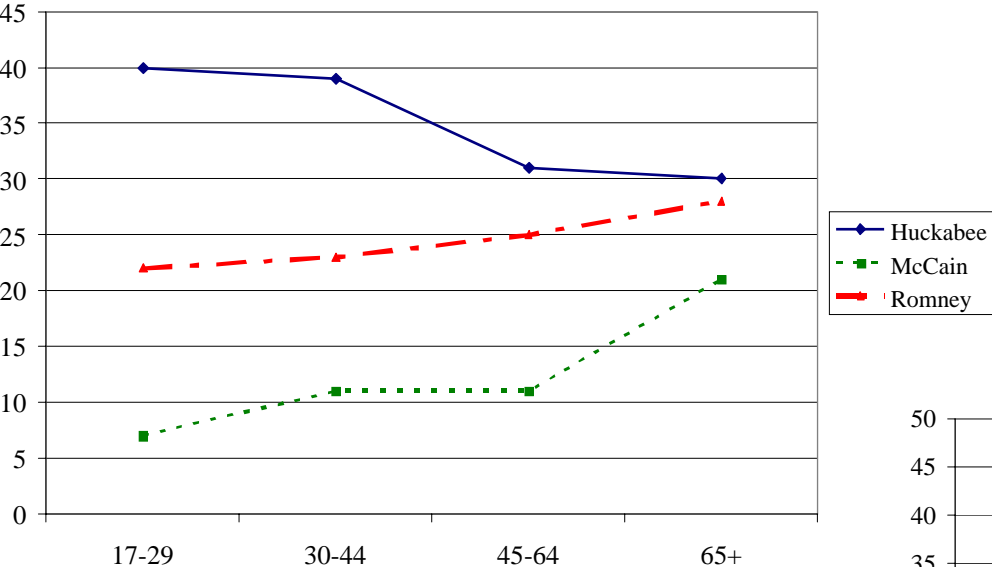
for Court of Appeals
2-11-2005

NO on Issue 1

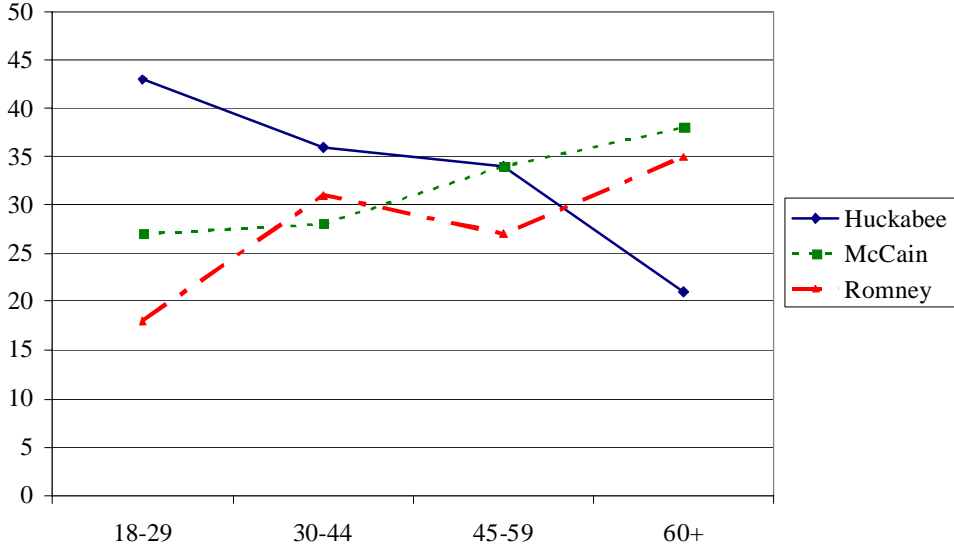


Mike Huckabee Did Well Among Young Republicans

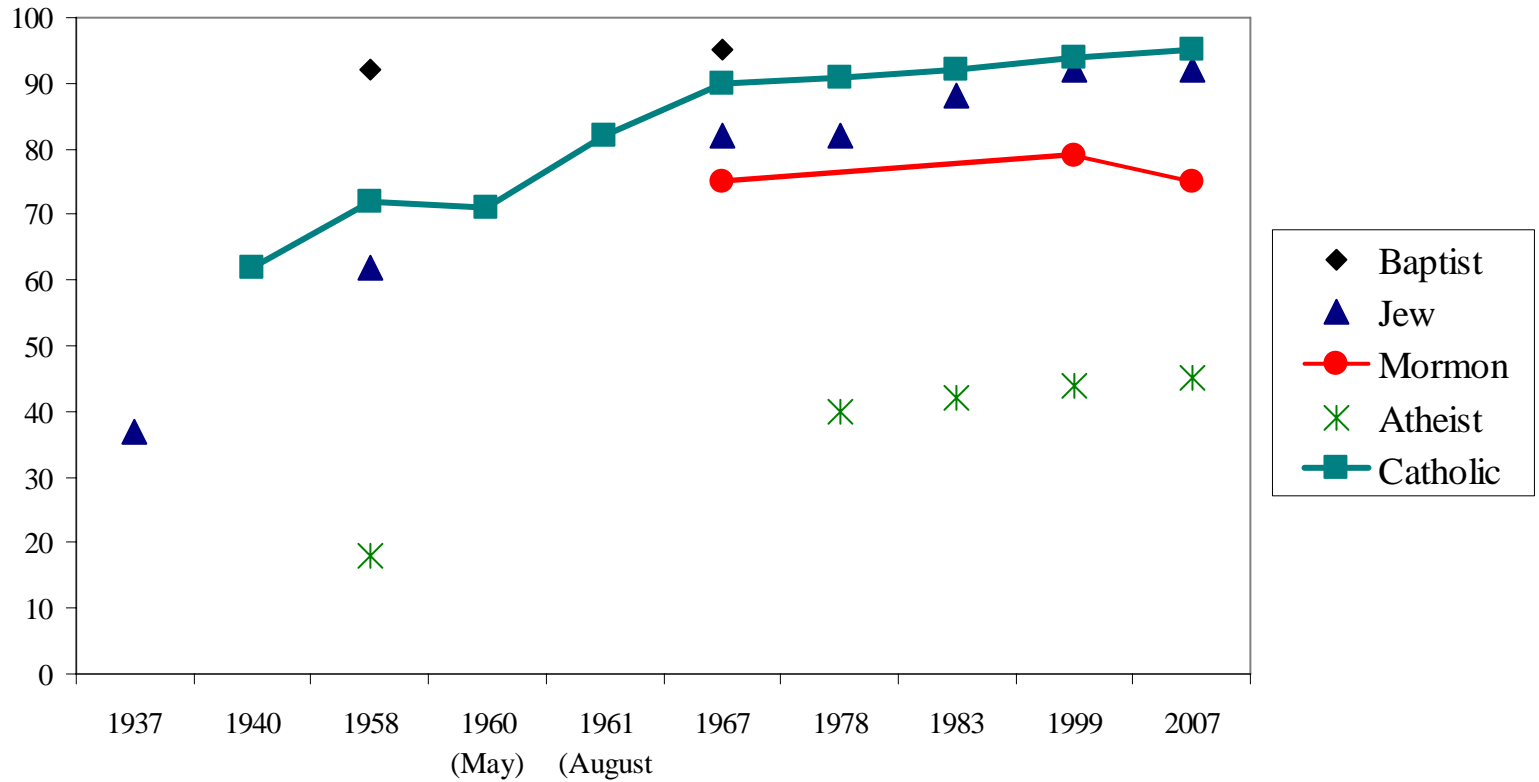
IOWA REPUBLICAN CAUCUS



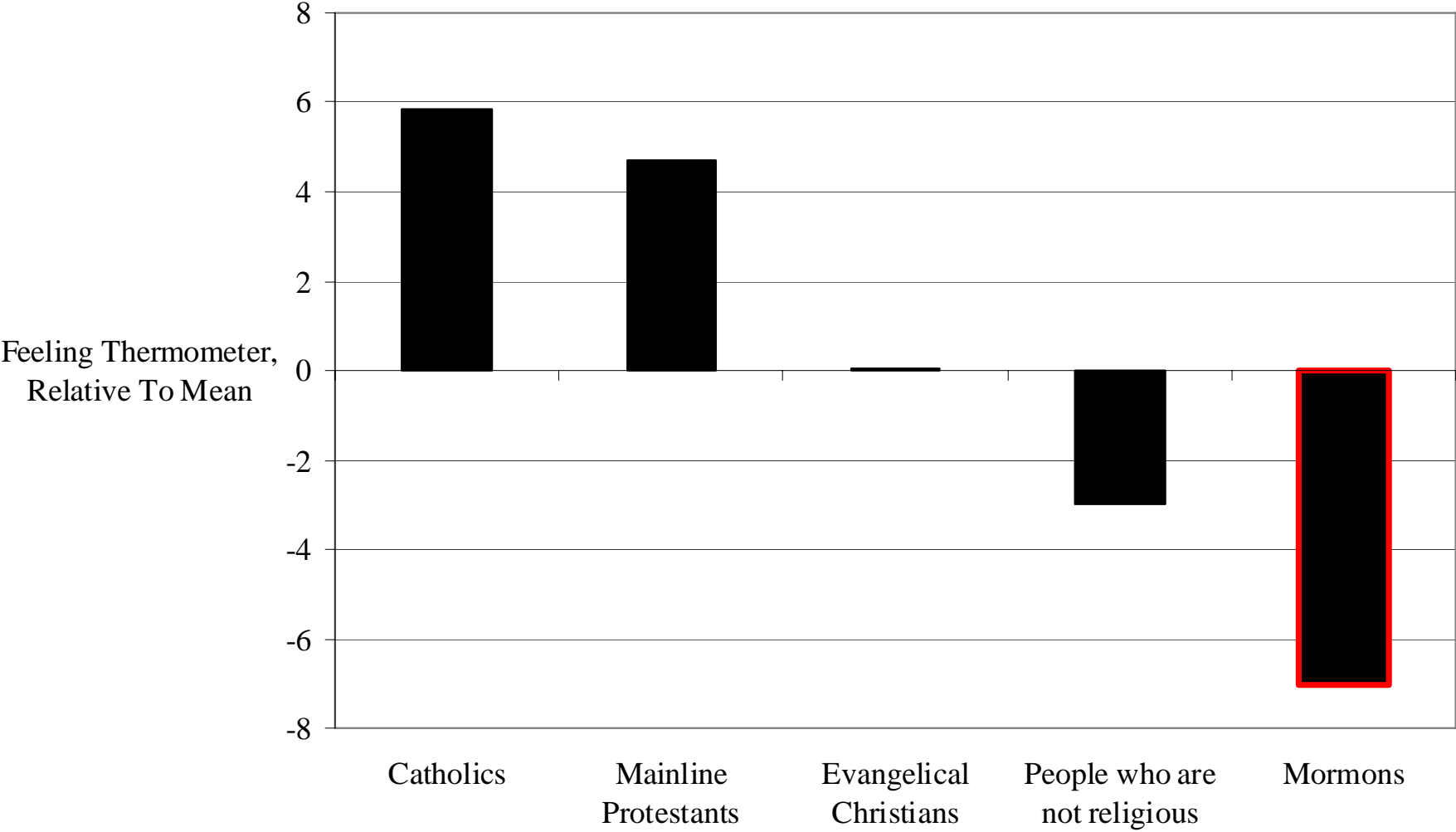
MISSOURI REPUBLICAN PRIMARY



Hypothetical Vote for Candidates of Different Religions



People Feel Cold Toward Mormons



People Feel Cold Toward Mormons (But Colder Toward Muslims)

