

Institutional design for the effective and efficient environmental management, governing and governance process by medium sized municipalities

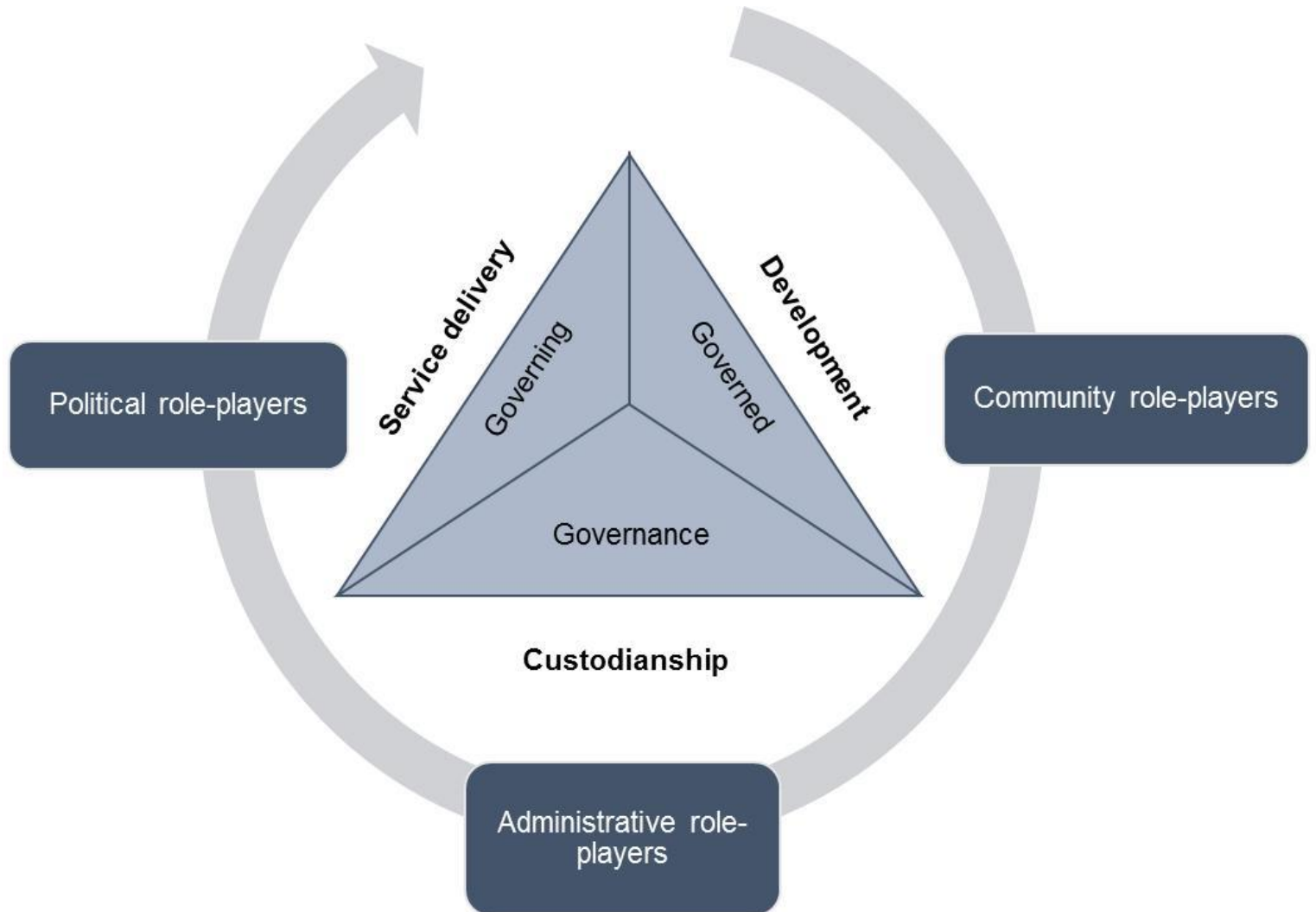
KAS & Faculty of Law (NWU) Workshop
2 August, 2017

Johan Nel
Centre for Environmental Management

An interesting question

- Discuss the speaker's point of view

Complexities



Insights

- Not really an ideal structure
- Environmental management, governing and governance are
 - Omnipresent
 - Cross-cutting
 - Universally applicable

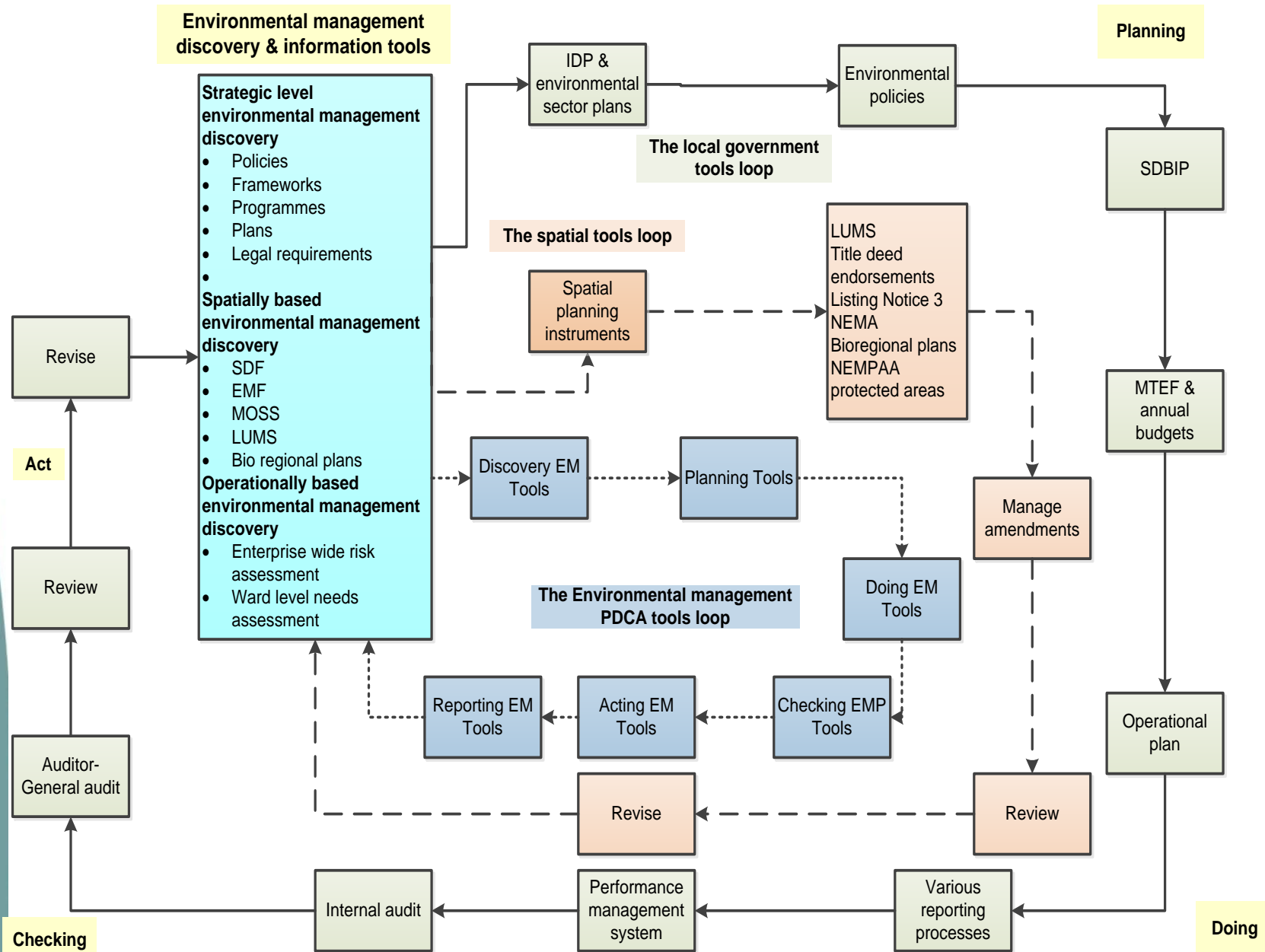
Insights

- What is required are:
 - Environmentally proficient politicians
 - Committed, ethical and skilled leadership
 - Joined-up, integrated and aligned 'matrix' management approach
 - Unwavering oversight
 - Skilled staff in all administrative units
 - Aligned
 - Strategy, policy, operations
 - Governing, governance and compliance
 - Efficient and effective adoption and use of tools
 - Process management across organisational entities



The context of environmental governing, governance and management tools

Local government-, spatial- and environmental management based tools



Conclusion

Thank you



Contact us:

Presenter: Johan Nel

Company: Centre for Environmental Management

Cell nr: 083 627 0636

E-mail: johan.nel@nwu.ac.za



www.cem-nwu.co.za

