

EPP Party Barometer October 2025

by **Olaf Wientzek**
Konrad-Adenauer-Stiftung

13.10.2025

Strongest party family in national opinion polls in the EU member states

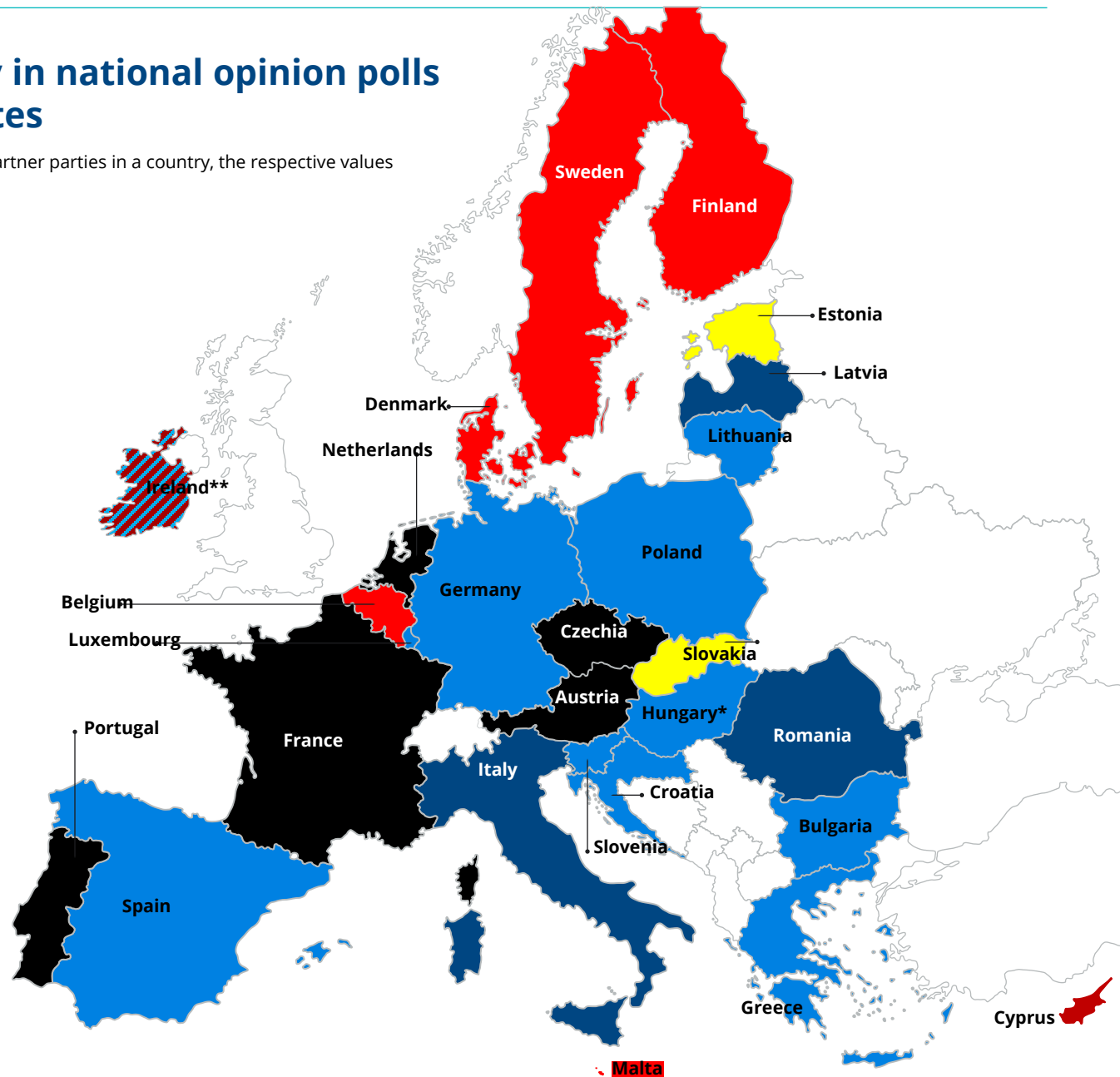
(In the case that a political family has several partner parties in a country, the respective values are cumulated)

Legend

- EPP family
- PES / S&D family
- ALDE & Renew family (liberals)
- ECR family / ECR Group members
- Greens/EFA
- The Left (far-left)
- Patriots for Europe (far-right)
- Independents (far-right)
- Independents (moderates)

* Polling to be taken with caution.
Institutes leaning towards Fidesz see Fidesz ahead, those sceptical of Fidesz see Tisza ahead. The tendency overall favors Tisza at the moment.

** In Ireland, FG (EPP) and Sinn Fein (Left) are tied.



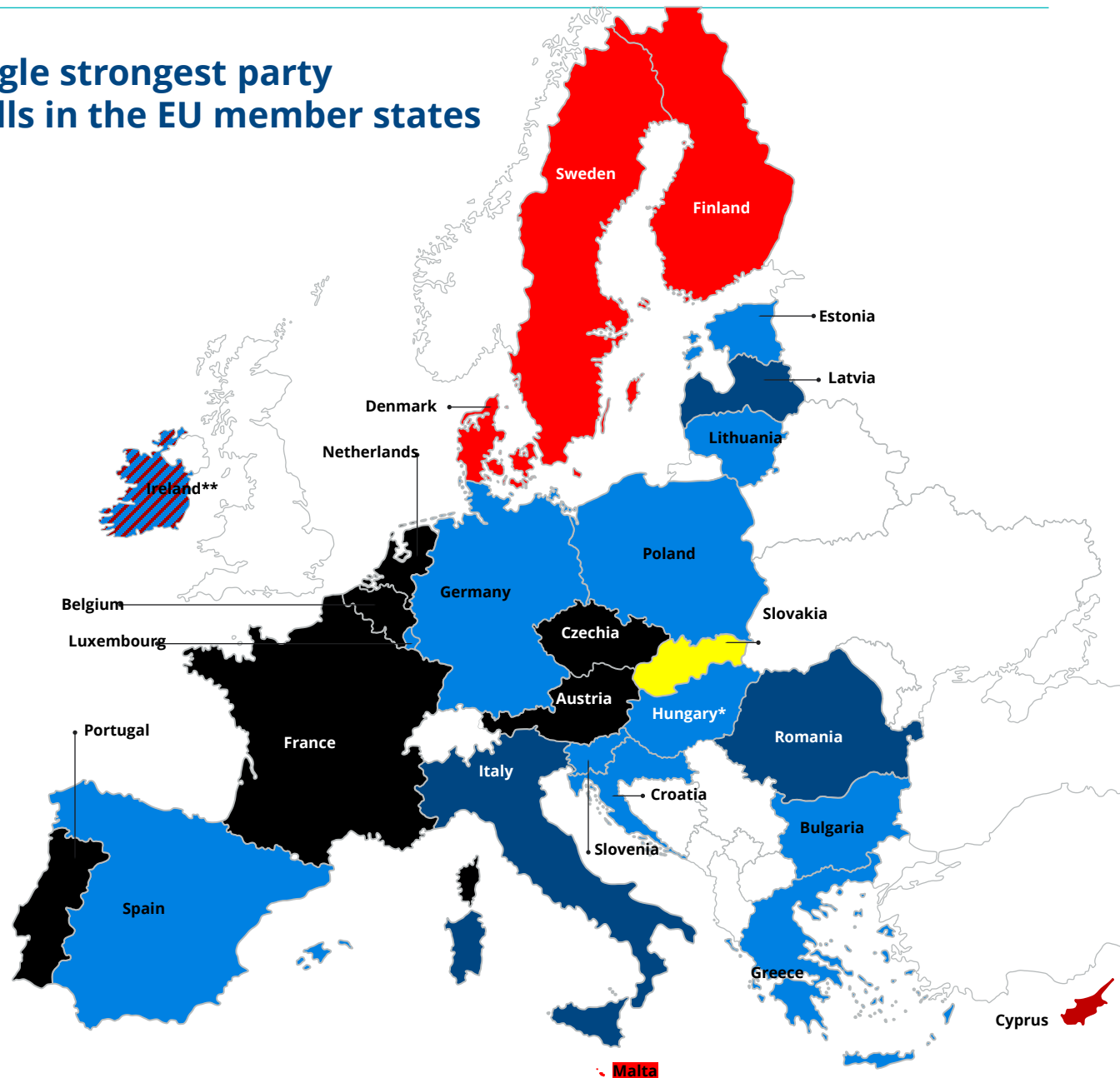
Party family of the single strongest party in national opinion polls in the EU member states

Legend

- EPP family
- PES / S&D family
- ALDE & Renew family (liberals)
- ECR family / ECR Group members
- Greens/EFA
- The Left (far-left)
- Patriots for Europe (far-right)
- Independents (far-right)
- Independents (moderates)

*Polling to be taken with caution. Institutes leaning towards Fidesz see Fidesz ahead, those sceptical of Fidesz see Tisza ahead. The tendency overall favors Tisza at the moment.

** In Ireland, FG (EPP) and Sinn Fein (Left) are tied.



Performance of the EPP family in national opinion polling

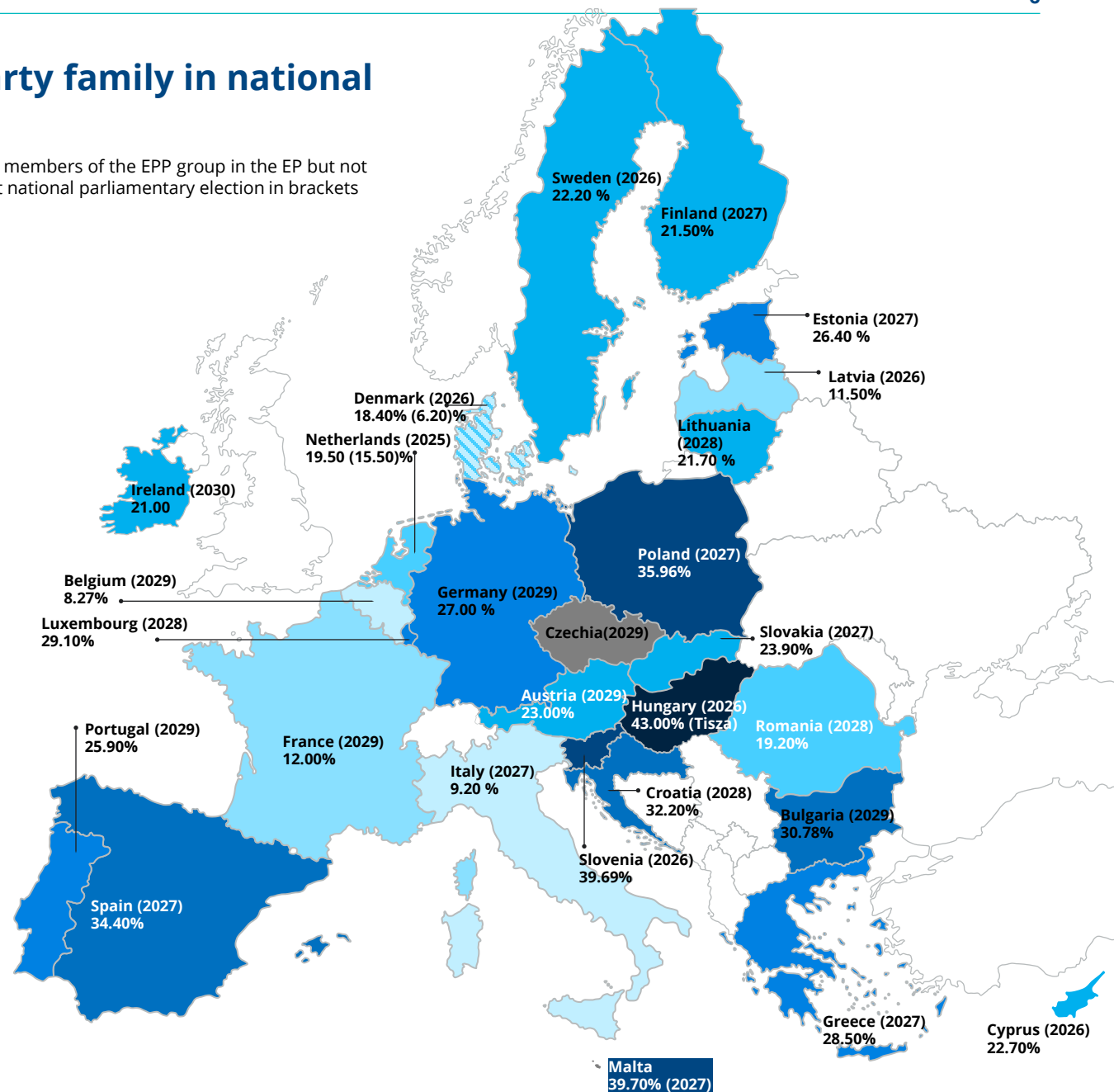
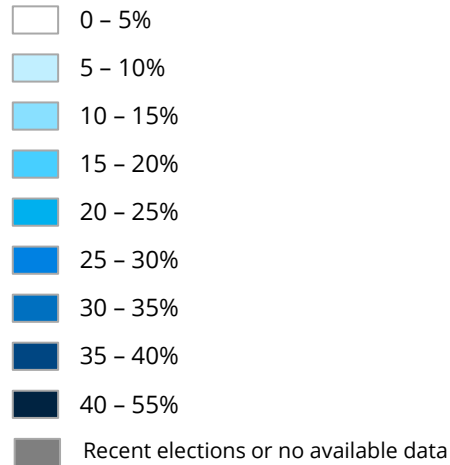
Outlook for the EPP family in 2025 /26

- › In **Portugal**, the centre-right alliance won the snap elections and is ruling (again) in a minority coalition. The far-right Chega led in the latest poll (September) but in the local elections (October) the centre-right won with more than 30%.
- › In **Czechia**, the incumbent centre-right government did not achieve a majority in the October parliamentary elections even though the losses were smaller than some opinion polls expected. The incoming government will be led by ANO (Patriots for Europe group in the EP), likely in a coalition with far-right parties Motorists (Patriots) and the SPD (ESN).
- › In the **Netherlands**, the Christian Democrats are expected to increase their number of seats substantially at the October elections, polling around 15%. They may end up being the strongest moderate party. In return, the other two parties (NSC, BBB) that are affiliated in the EPP Group are expected to lose significantly, particularly the NSC might not even get a seat.
- › For the **Hungarian** parliamentary elections in April 2026, the outlook seems very open. Depending on the affiliation of the polling institute, Fidesz (Patriots for Europe) or Tisza (EPP) are ahead.
- › In **Slovenia**, ahead of the April legislative elections the EPP party SDS is leading the race but would need coalition partners. NSi would enter the parliament as well, possibly also the centre-right Demokrati who have split from SDS.
- › In **Cyprus** (legislative elections in May) the EPP party DISY has somewhat lost support in the polls and is now slightly behind the far-left AKEL.
- › Roughly a year ahead of the legislative elections in **Sweden**, the Red-Green opposition is leading in the polls, the larger EPP partner party Moderaterna polls around 18%, the smaller Christian Democrats are polling around the 4%-threshold or lower. The Sweden Democrats (ECR) are polling around 20-24%.
- › Very fragmented picture in **Denmark** ahead of the autumn 2026 legislative elections. The governing coalition would receive around 1/3 of the votes. The traditional left-right-camps are at the same level. Social Democrats are polling only at 20% or lower, strongest party in the centre-right camp is Liberal Alliance (EPP Group but not EPP party) with 12-13%.
- › Equally fragmented picture in **Latvia** with six parties polling between 10-15%, EPP partner and PM party around 11.5%.
- › Early legislative elections in **France** cannot be ruled out. The EPP partner LR are polling around 12-13%.

Strength of the EPP party family in national opinion polling

(The values in brackets exclude parties that are members of the EPP group in the EP but not the EPP party; scheduled latest date of the next national parliamentary election in brackets above)

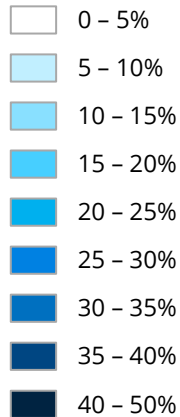
Legend



Election results of the EPP party family in the last national parliamentary election

(Scheduled latest date of the next national parliamentary election in brackets above. The values in brackets exclude parties that are members of the group but not the EPP party)

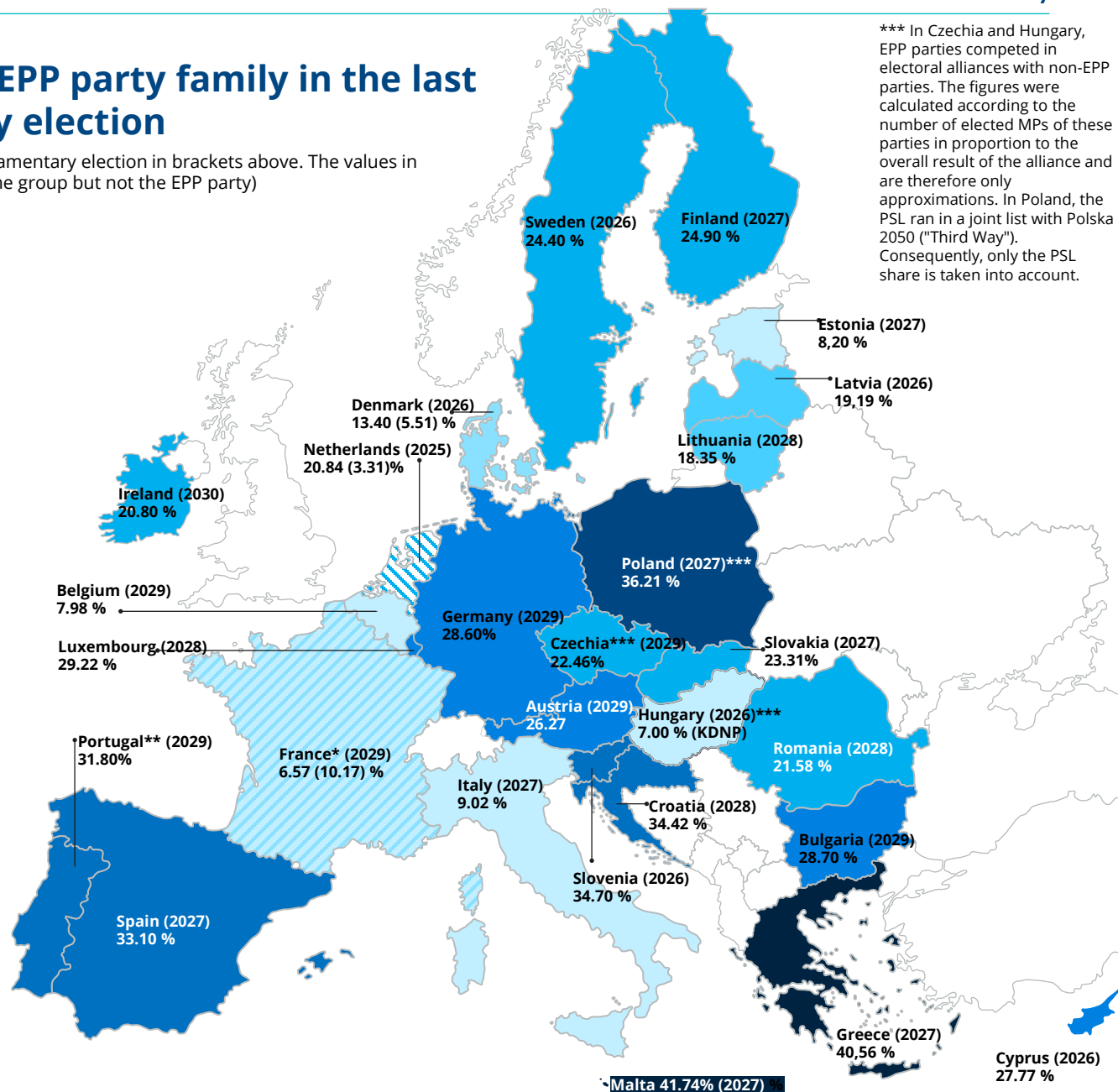
Legend



*the numbers refer to the first round of the 2024 parliamentary election (in brackets incl. divers Droite)

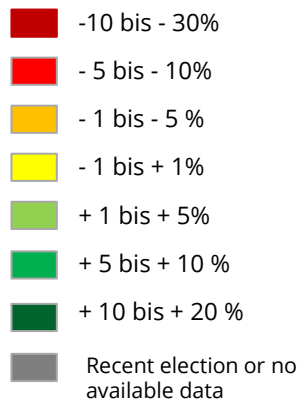
**in Portugal PSD and CDS-PP ran on a joint list

*** In Czechia and Hungary, EPP parties competed in electoral alliances with non-EPP parties. The figures were calculated according to the number of elected MPs of these parties in proportion to the overall result of the alliance and are therefore only approximations. In Poland, the PSL ran in a joint list with Polska 2050 ("Third Way"). Consequently, only the PSL share is taken into account.

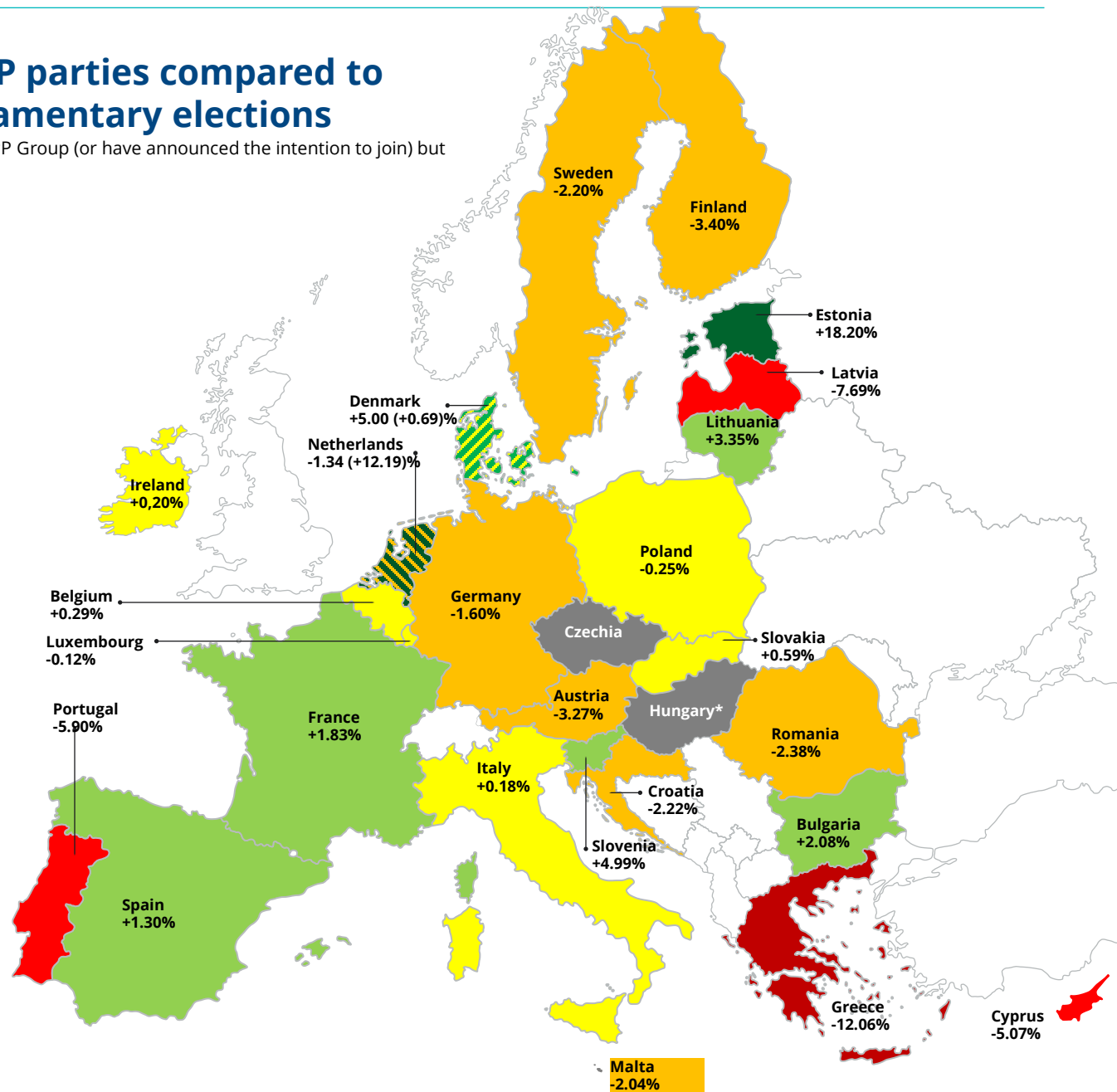


Gains / losses of all EPP parties compared to the last national parliamentary elections

(In brackets: excluding parties that are in the EPP Group (or have announced the intention to join) but that are not in the EPP)



*KDNP left the EPP in the meantime. Tisza is a new party; thus no comparison can be made between current opinion polling and the last parliamentary elections.

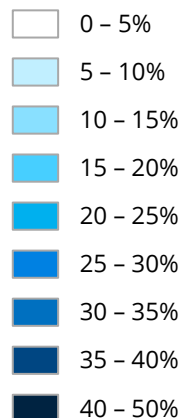


Strength of the largest EPP partner party in polls

(in brackets: Latest date for the expected next national parliamentary election)

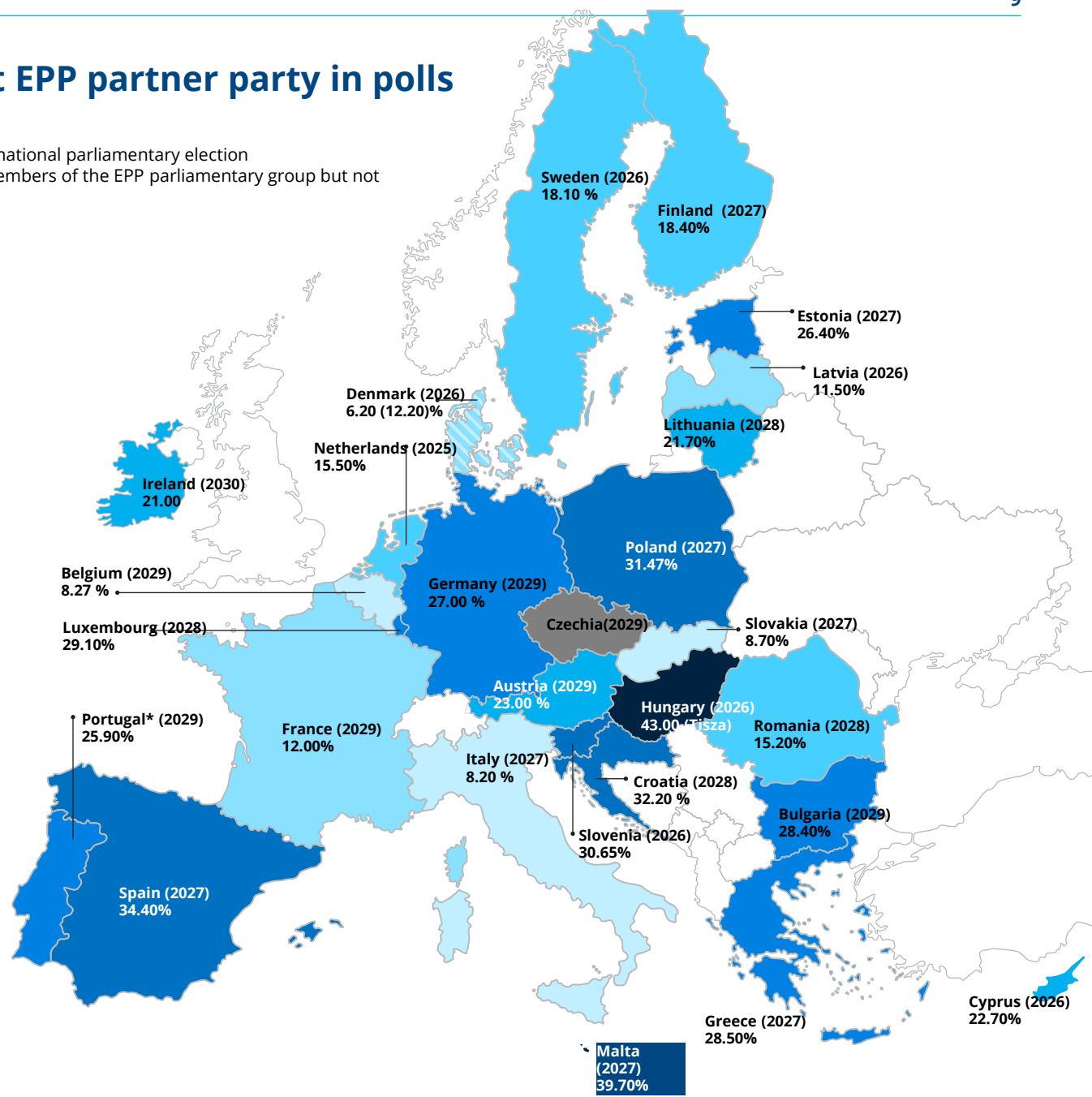
In brackets below: Values of parties that are members of the EPP parliamentary group but not members of the EPP)

Legend



n/a or no polls since the last election
/ election was less than six weeks
ago

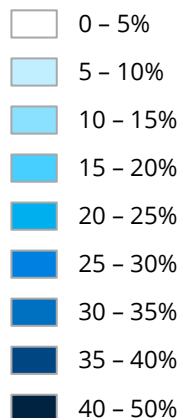
*PSD and CDS-PP agreed to a joint list for
the national and EP elections



Election results of the largest EPP partner party in the last national parliamentary elections

(in brackets above: Latest date for the expected next national parliamentary election.
In brackets below: Values of parties that are members of the EPP parliamentary group but not members of the EPP)

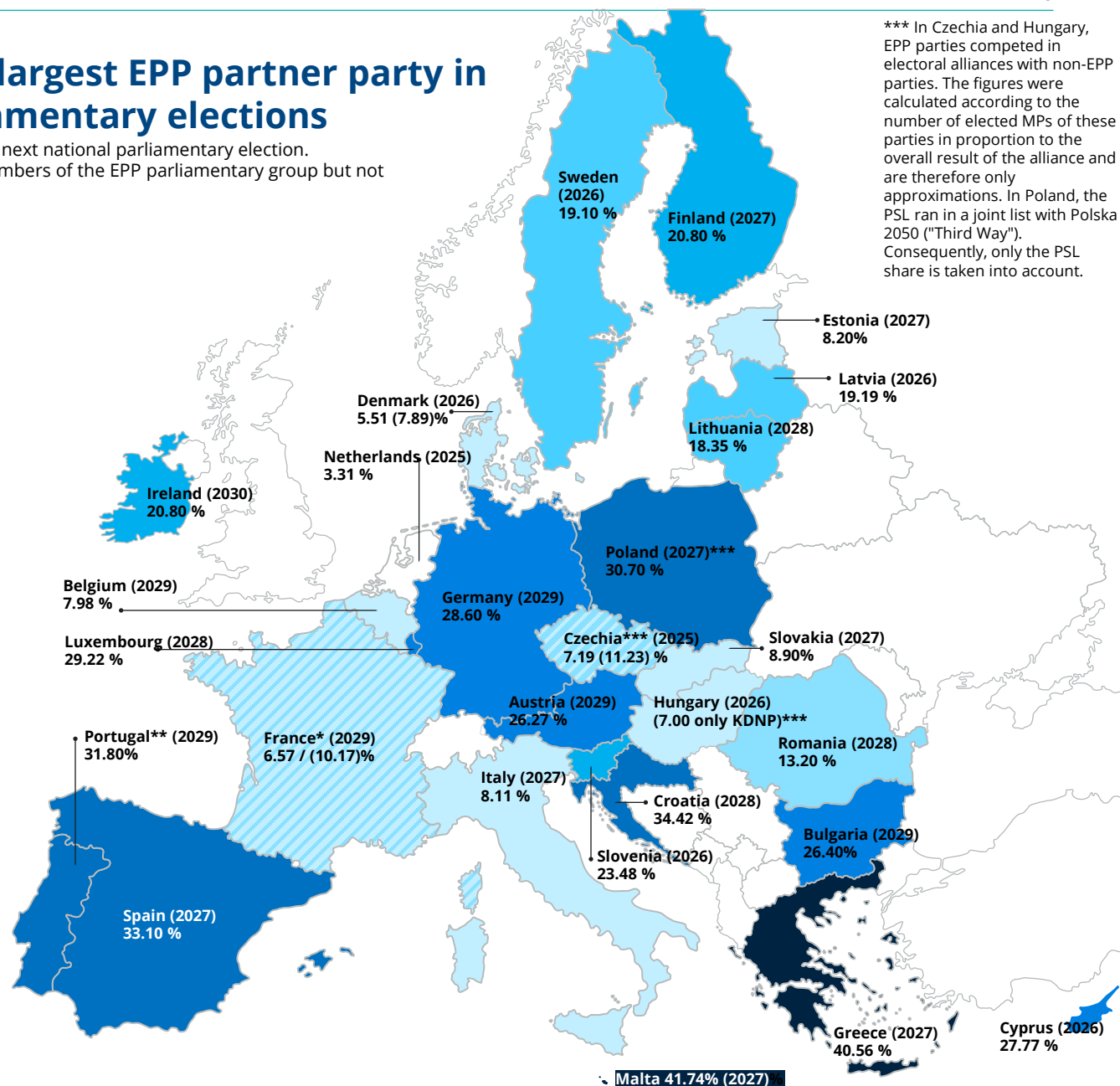
Legend



*the numbers refer to the first round of the 2024 parliamentary election (in brackets incl. Divers Droite)

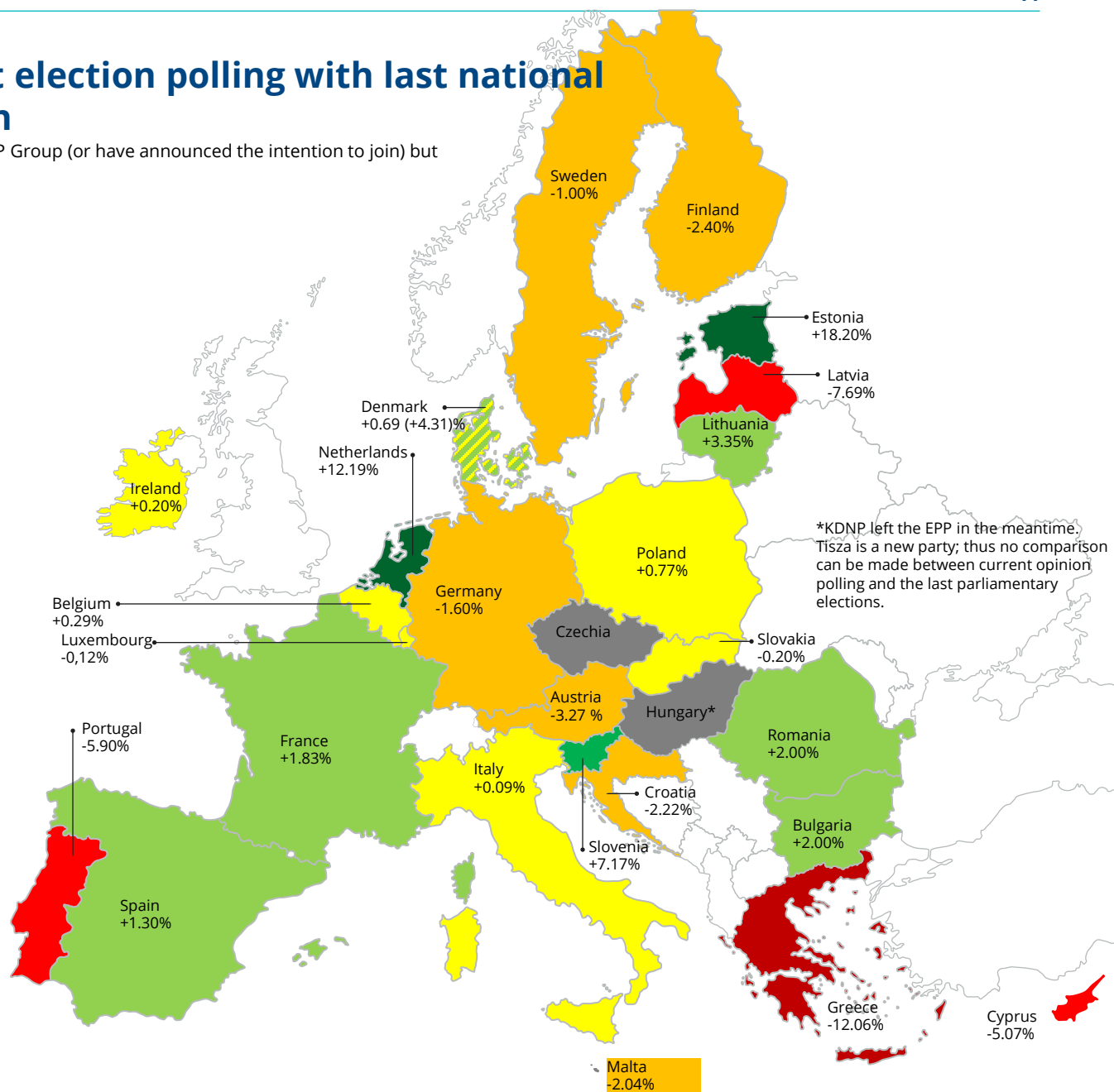
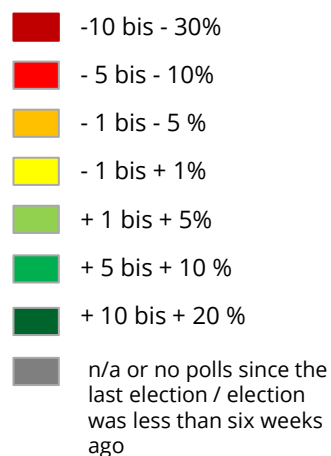
**In Portugal, the PSD entered into list combinations with the CDS-PP in the Azores and Madeira. Only the result of the individual list is counted here.

*** In Czechia and Hungary, EPP parties competed in electoral alliances with non-EPP parties. The figures were calculated according to the number of elected MPs of these parties in proportion to the overall result of the alliance and are therefore only approximations. In Poland, the PSL ran in a joint list with Polska 2050 ("Third Way"). Consequently, only the PSL share is taken into account.



Comparison of current election polling with last national parliamentary election

(in brackets: including parties that are in the EPP Group (or have announced the intention to join) but not in the EPP)

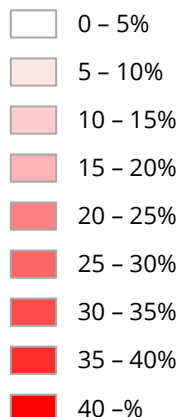


Opinion polling of other political forces

Strength of the PES family in current opinion polls or last national elections in the EU

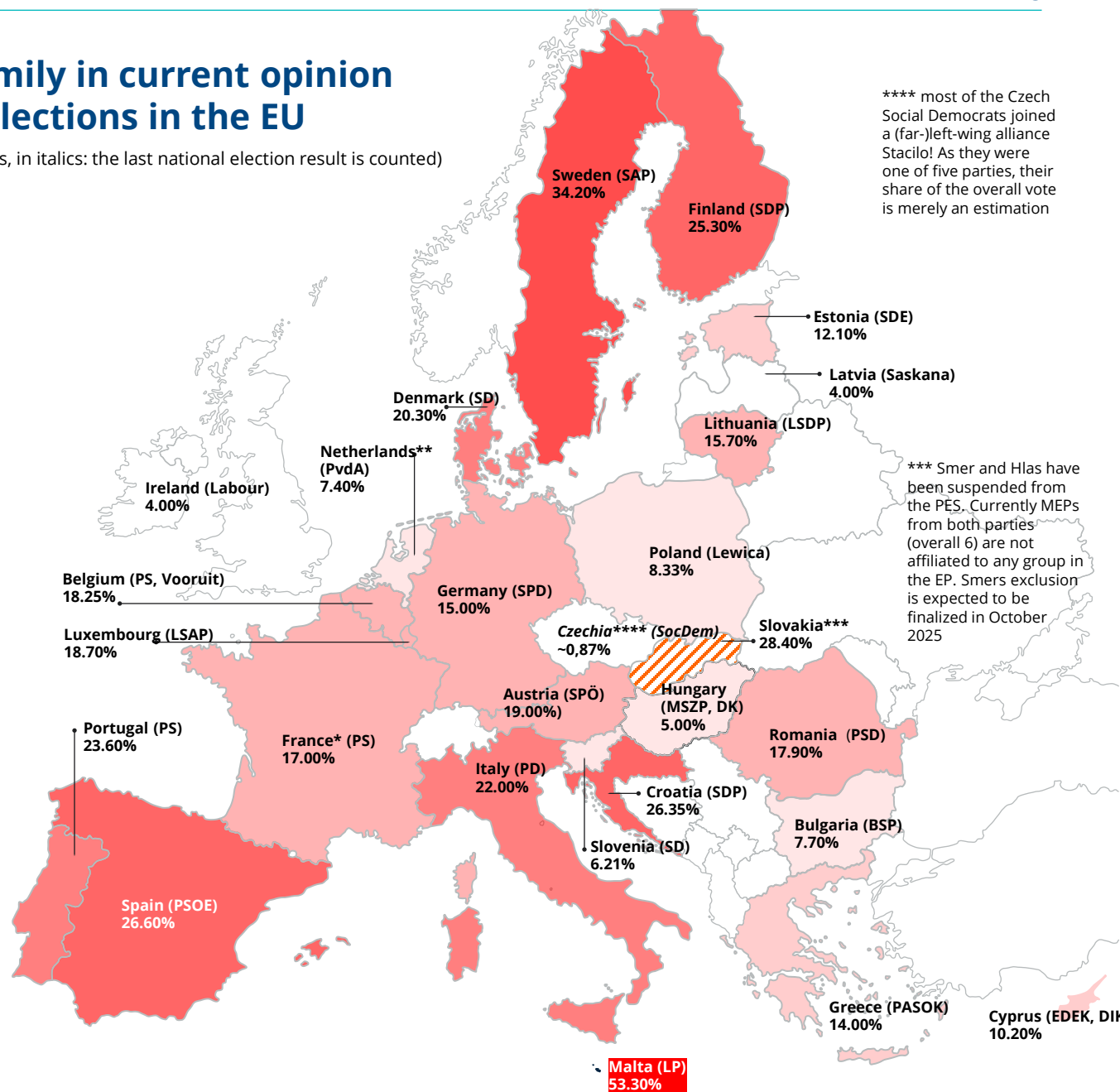
(in brackets at the top: national member parties, in italics: the last national election result is counted)

Legend



* including PCF which is not a PES member

** In the Netherlands, the PvdA is running on a joint list with GroenLinks, therefore just half of the polling result is counted here.



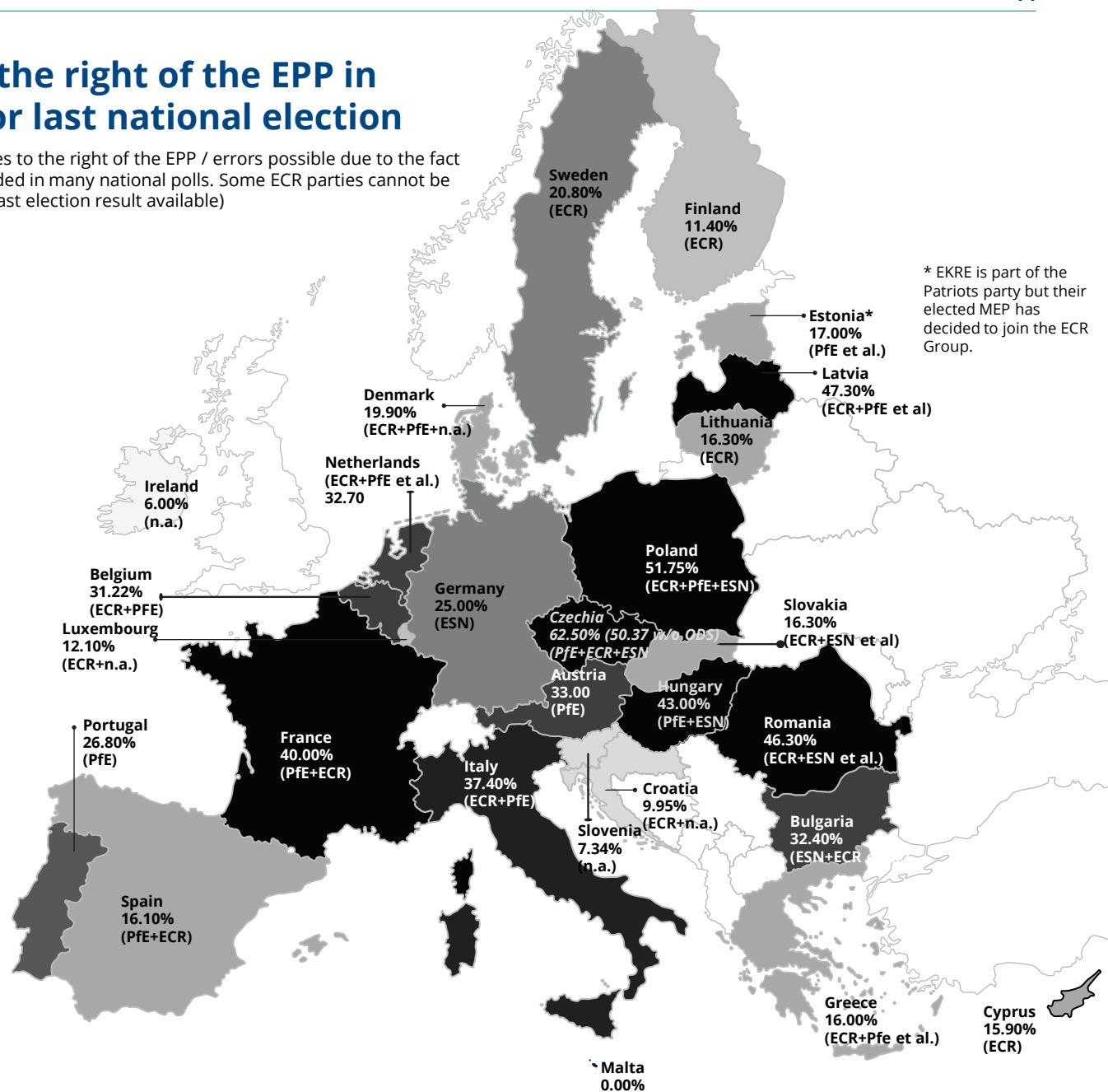
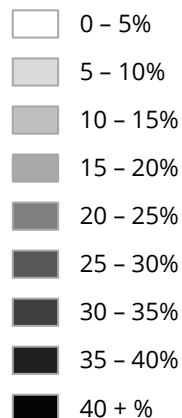
**** most of the Czech Social Democrats joined a (far-)left-wing alliance Stacilo! As they were one of five parties, their share of the overall vote is merely an estimation

*** Smer and Hlas have been suspended from the PES. Currently MEPs from both parties (overall 6) are not affiliated to any group in the EP. Smer's exclusion is expected to be finalized in October 2025

Strength of parties to the right of the EPP in current opinion polls or last national election

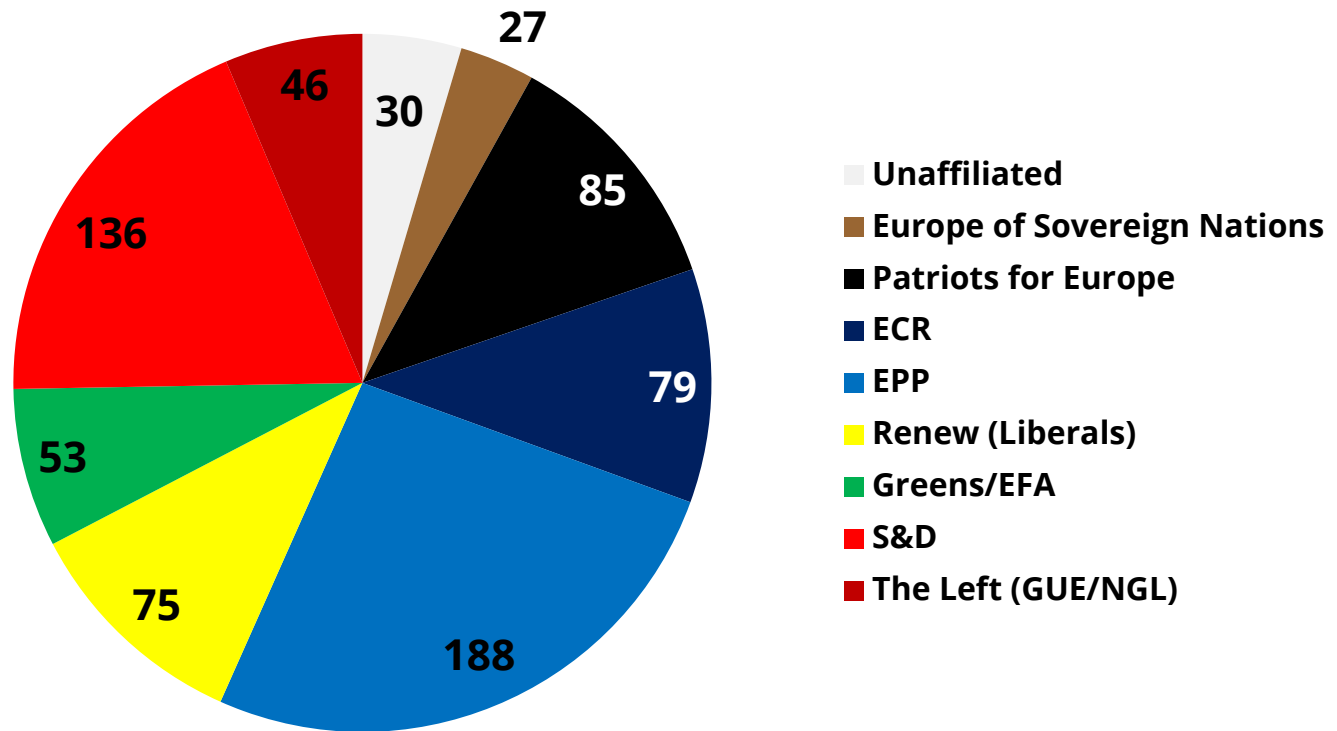
(in brackets party families of the national parties to the right of the EPP / errors possible due to the fact that micro-parties at the far-right are not included in many national polls. Some ECR parties cannot be considered as far-right parties / in italics: only last election result available)

Legend



Composition of the European Parliament

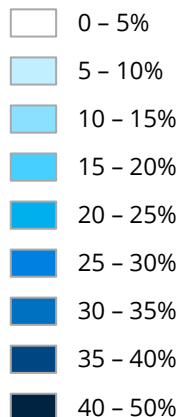
Current composition of the EP (including comparison with previous strength) as of 10 October 2025



Strength of the EPP party family in the 2024 EP elections

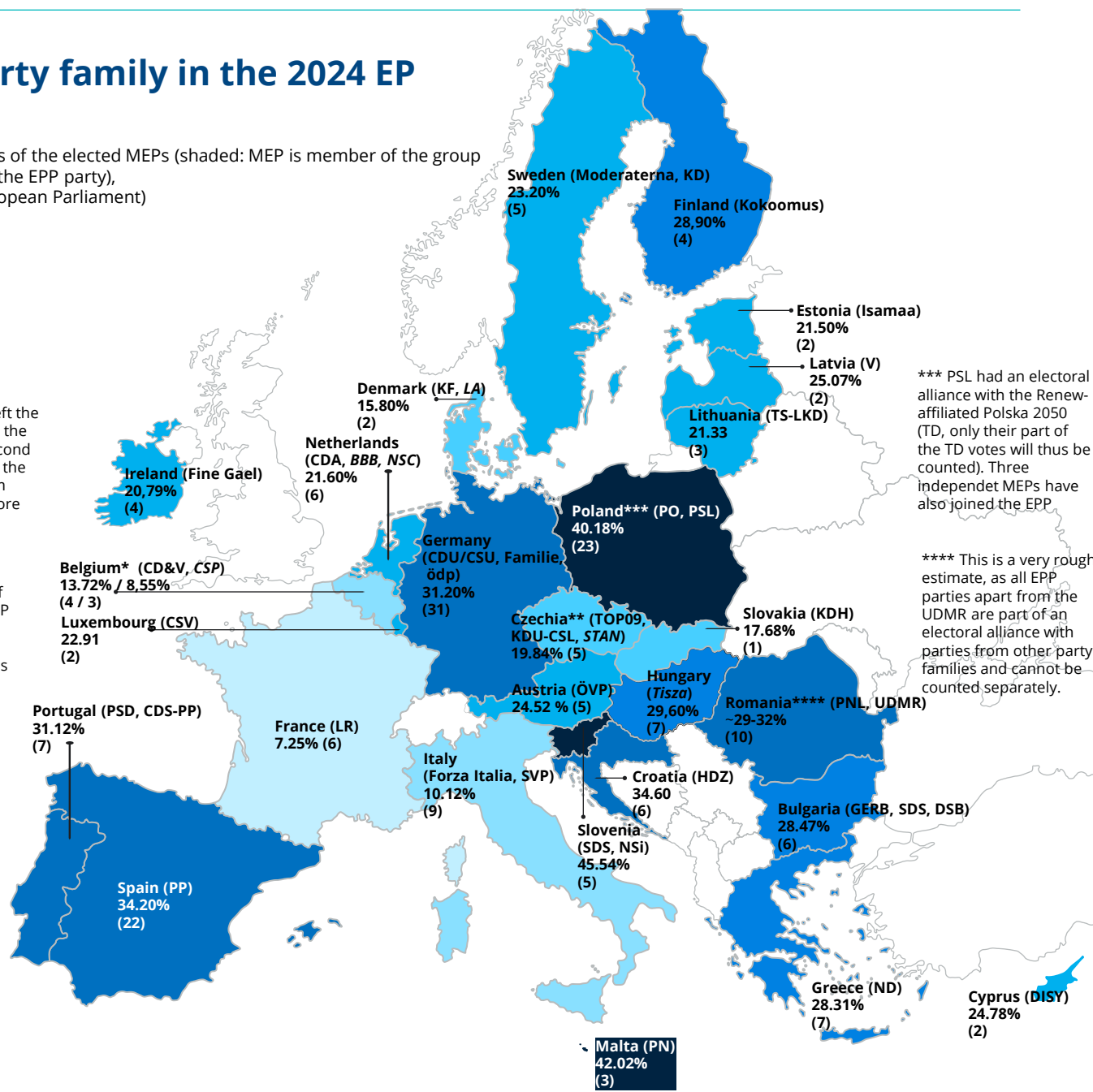
(in brackets at the top: national member parties of the elected MEPs (shaded: MEP is member of the group but the national party is not (yet) a member of the EPP party),
In brackets at the bottom: seats in the new European Parliament)

Legend



* Les Engagés left the EPP Group after the election. The second number reflects the result in Belgium without their score

** As SPOLU is a joint list of the ECR and two smaller EPP parties, only some of the elected MEPs will belong to the EPP group, which means that only half of the EPP result will be counted here



*** PSL had an electoral alliance with the Renew-affiliated Polska 2050 (TD, only their part of the TD votes will thus be counted). Three independent MEPs have also joined the EPP

**** This is a very rough estimate, as all EPP parties apart from the UDMR are part of an electoral alliance with parties from other party families and cannot be counted separately.

Government participation of the EPP family

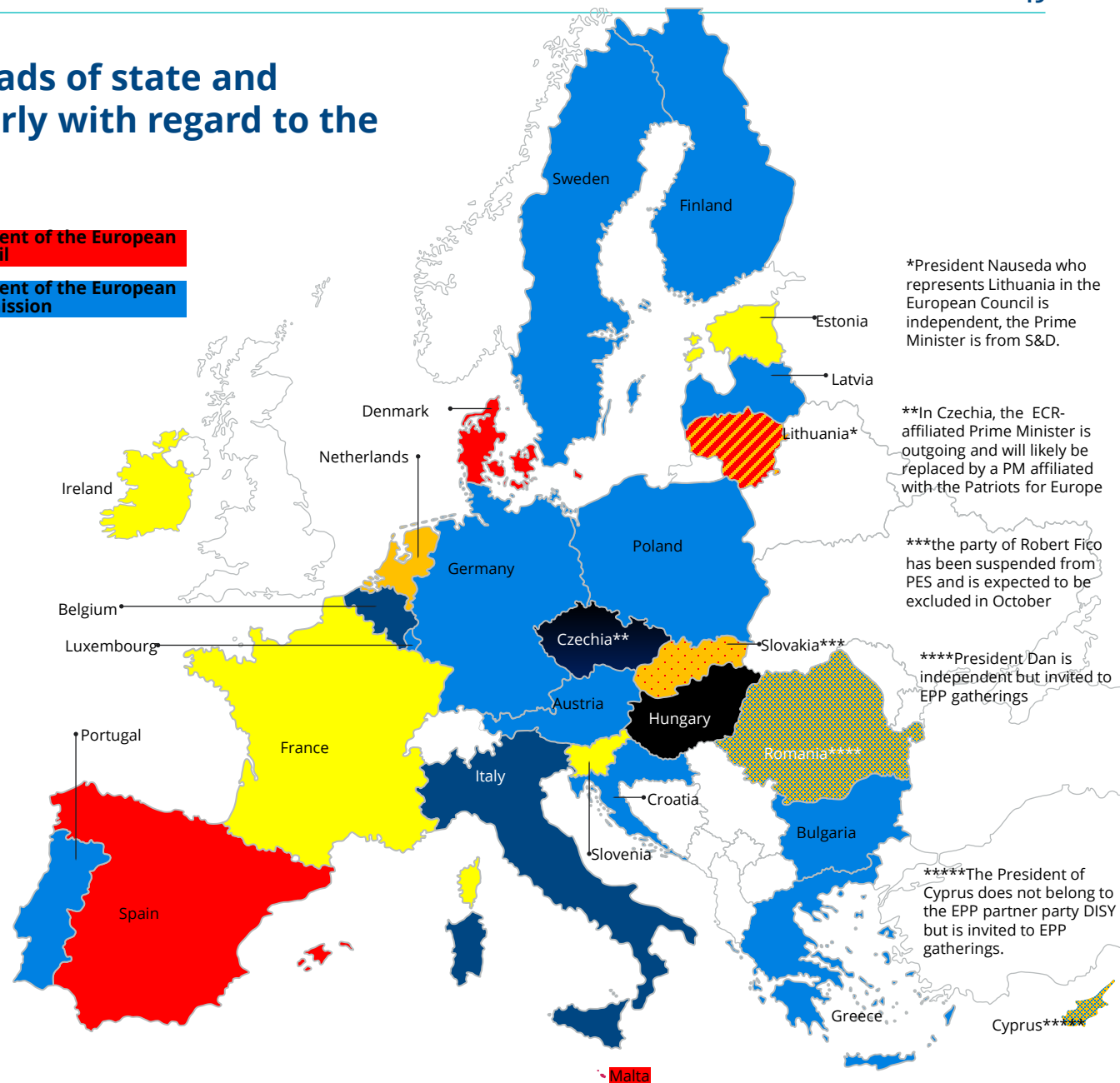
Political families of heads of state and government (particularly with regard to the European Council)

Legend

- EPP family
- PES / S&D-family
- Renew-Familie (Liberals)
- ECR Group / Family
- Greens
- The Left (GUE/NGL)
- Patriots for Europe (far-right)
- Independents (far-right)
- Other independents

President of the European Council

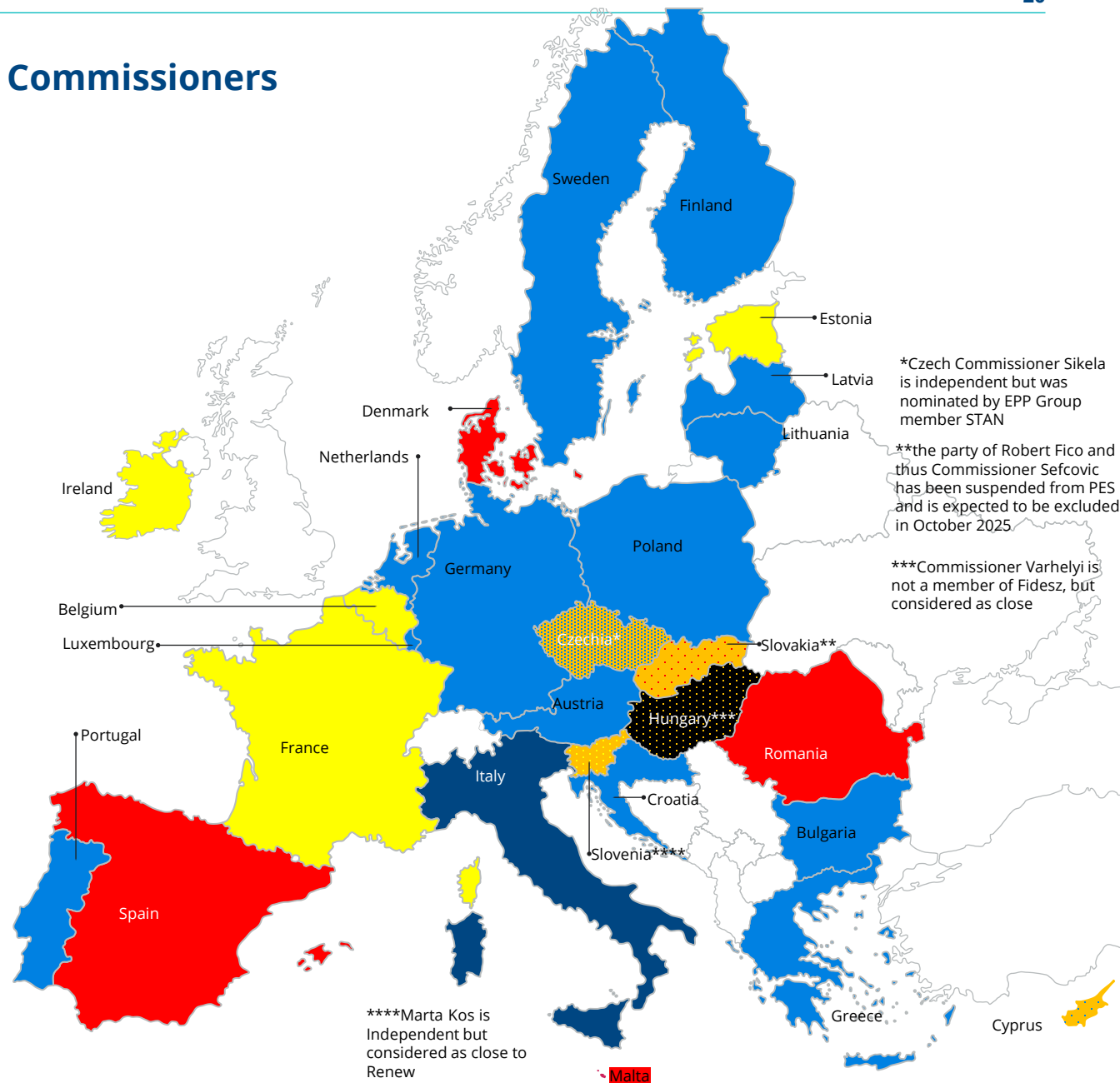
President of the European Commission



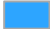
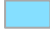
Political families of EU Commissioners

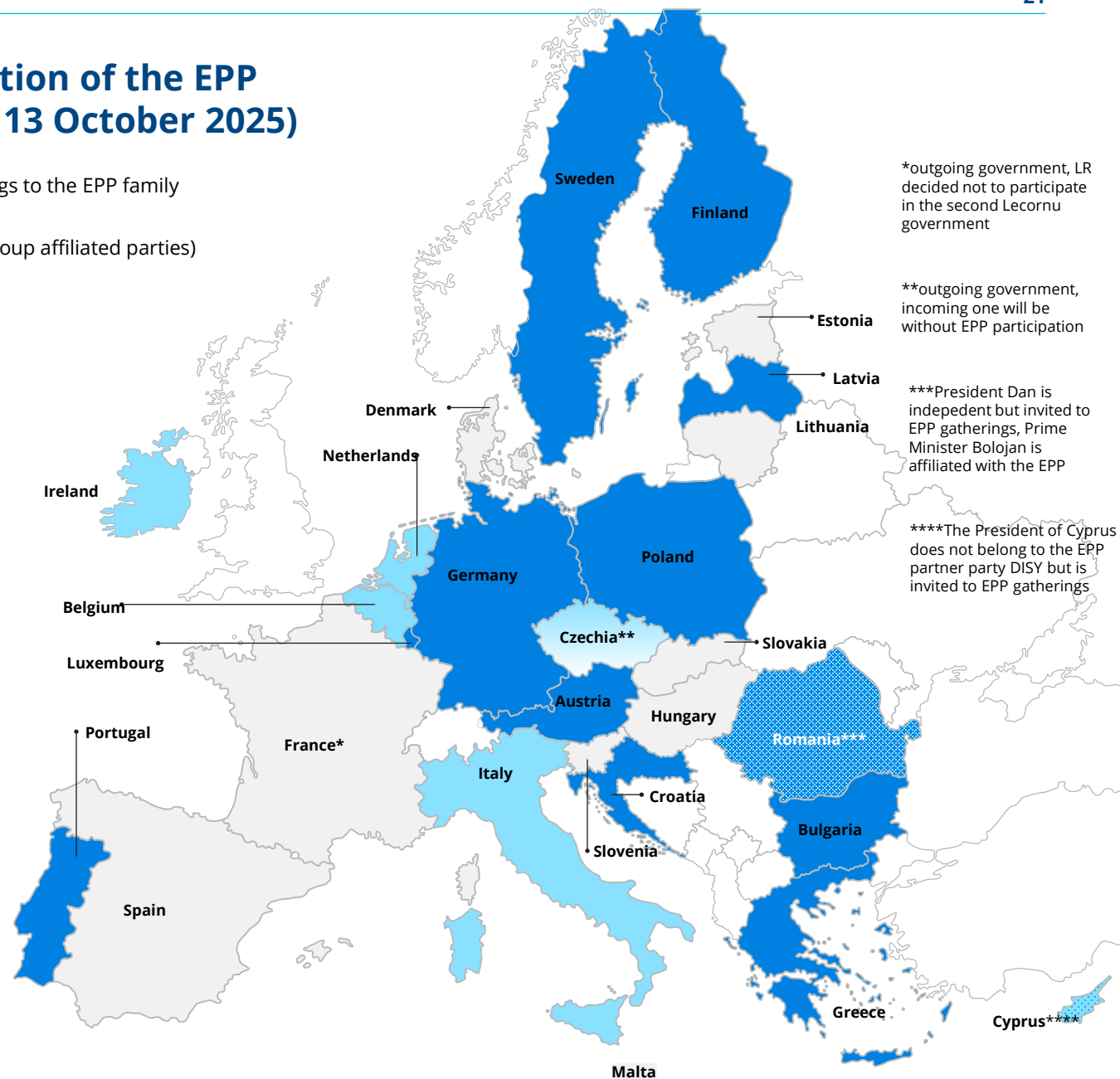
Legend

- EPP family
- PES / S&D-family
- Renew-Familie (Liberals)
- ECR family
- Greens/EFA
- The Left (GUE/NGL)
- Patriots for Europe (far-right)
- Independents (far-right)
- Other independents



Government participation of the EPP family in the EU (as of 13 October 2025)

-  Head of state or government belongs to the EPP family
-  Parties of the EPP family (or EPP Group affiliated parties) participate in the government



Remarks

- › In Belgium, polls are only conducted at regional level: In order to obtain an adequate result at national level, these individual results were weighted according to the number of eligible voters (voting is compulsory) and the actual voter turnout. This may lead to small deviations. In Belgium, the partner parties CD&V, CSP only compete regionally. The results in the individual regions are weighted accordingly. The CSP only competes in European elections.
- › In several countries, the undecided and non-voters are included in the total (100%) in the polls. The poll results have been extrapolated accordingly. Example: Party A has 13% in the polls. 30% of respondents will not vote. 20% of respondents are undecided. Accordingly, support for party A is given as 26%.
- › In Germany, the CDU and CSU are not cited as two separate parties due to the parliamentary grouping and the fact that they are always added together in polls.
- › In Poland, the KO is strongly dominated by the PO, even though other smaller parties not belonging to the EPP are also members of the PO. Accordingly, the KO result is counted entirely as an "EPP result". The Third Way was an alliance of PSL and Polska 2050. Only the PSL result is taken into account for the overall result where applicable.
- › In several countries, parties are part of the EPP group without belonging to the EPP. In some cases, they even belong to a different party family. This applies to BBB & NSC in the Netherlands, among others, STAN in Czechia, Liberal Alliance in Denmark. The corresponding results are listed in brackets.
- › Some of the parties belonging to the ECR family are right-wing populist or have strong right-wing populist elements. As this is now an established family of parties, parties belonging to it are listed as part of the ECR family and not as "right-wing populist".
- › In Czechia, the parties that are part of the EPP group in the EP ran in an electoral alliance with non-EPP parties. The KDU-CSL and TOP 09 have an alliance with the ODS (ECR). The values were calculated according to the number of elected MPs of these parties in proportion to the overall result of the alliance and are therefore only approximations. The same applies to two of the EPP member parties in Bulgaria.
- › In Hungary, no separate poll results are shown for KDNP (EPP) and Fidesz (no longer part of the EPP since 2021). KDNP left the EPP in the meantime. Tisza is a new party; thus no comparison can be made between current opinion polling and the last parliamentary elections.
- › The EPP has regional partners outside Europe in Morocco and Lebanon.

Sources

Ipsos (Belgium), Gallup (Bulgaria), Voxmeter (Denmark), FG Wahlen (Germany), Norstat (Estonia), Verian (Finland), Ifop (France), Pulse RC (Greece), Ireland thinks (Ireland), Bidimedia (Italy, Ipsos (Croatia), SDKS (Latvia), Spinter tyrimai (Lithuania), Ilres (Luxembourg), Malta Today (Malta), Ipsos (Netherlands), OGM (Austria), Ibris (Poland), Aximage (Portugal), INSCOP (Romania), Verian (Sweden), NMS or AKO (Slovakia), Mediana (Slovenia), NC Report (Spain), STEM (Czechia), Median (Hungary), Stratego IMR (Cyprus) .

Impressum

Konrad-Adenauer-Stiftung e. V.

Dr. Olaf Wientzek

Director of Multinational Development Policy Dialogue Brussels
European and International Cooperation
olaf.wientzek@kas.de

Editor: Konrad-Adenauer-Stiftung e. V. 2025. Berlin



The text of this work is licensed under the terms of "Creative Commons Attribution-ShareAlike 4.0 international". CC BY-SA 4.0 (available at: <https://creativecommons.org/licenses/by-sa/4.0/legalcode.de>)