

EPP Party Barometer January 2026

by **Olaf Wientzek**
Konrad-Adenauer-Stiftung

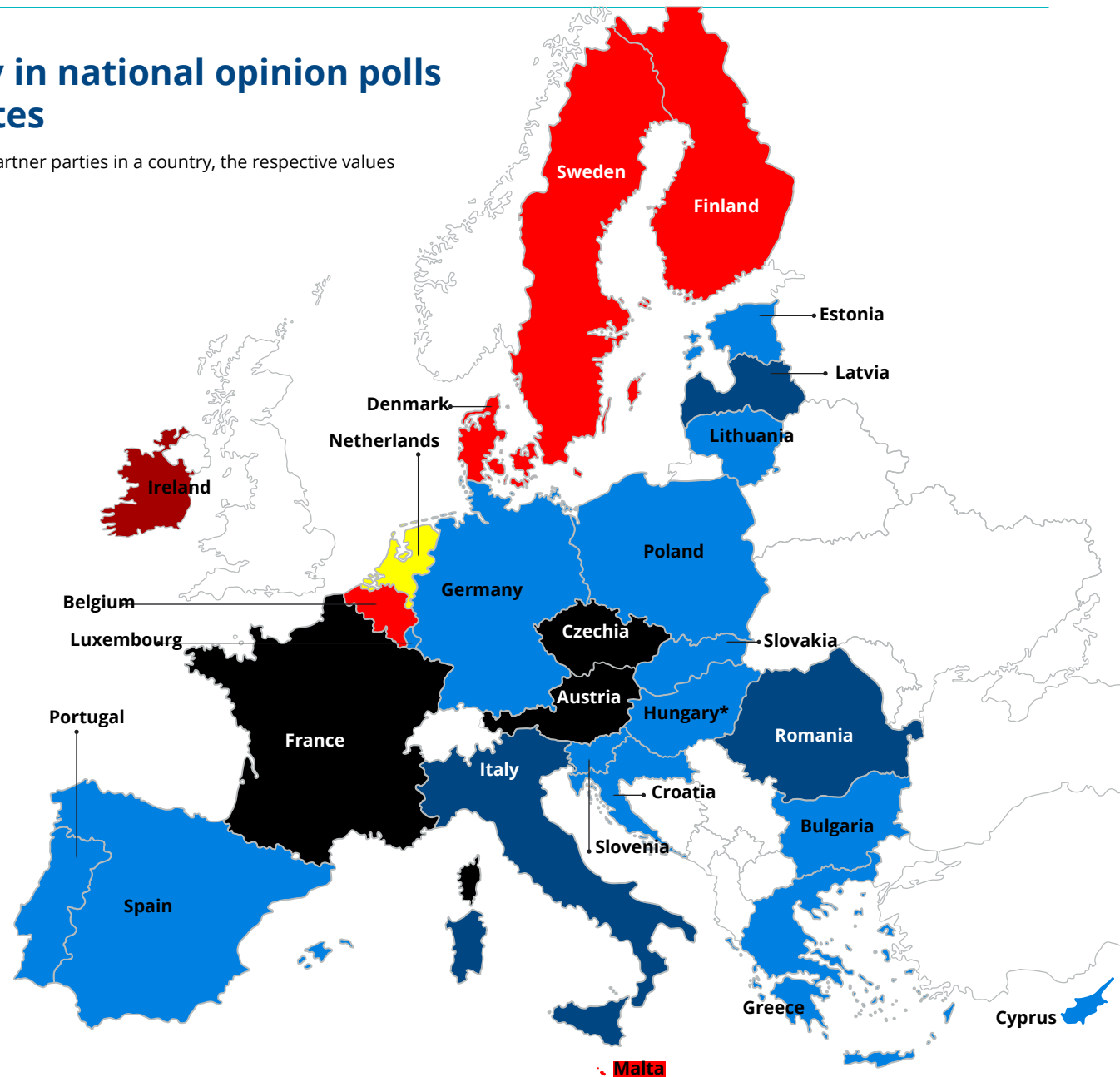
27.01.2026

Strongest party family in national opinion polls in the EU member states

(In the case that a political family has several partner parties in a country, the respective values are cumulated)

Legend

- EPP family
- PES / S&D family
- ALDE & Renew family (liberals)
- ECR family / ECR Group members
- Greens/EFA
- The Left (far-left)
- Patriots for Europe (far-right)
- ESN (extreme-right)
- Independents

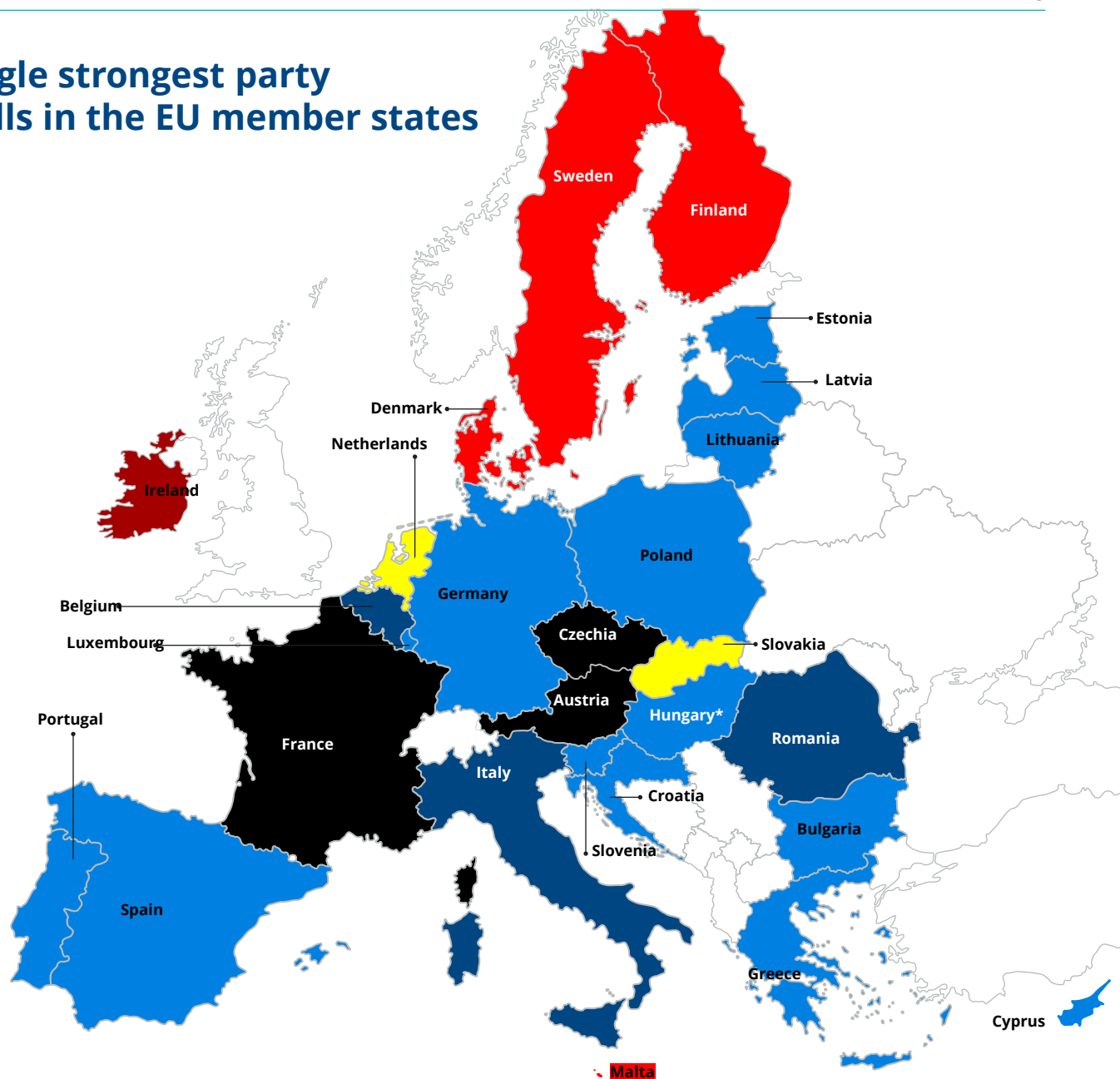


* Polling to be taken with caution.
Institutes leaning towards Fidesz see Fidesz ahead, those sceptical of Fidesz see Tisza ahead. The tendency overall favors Tisza at the moment.

Party family of the single strongest party in national opinion polls in the EU member states

Legend

- EPP family
- PES / S&D family
- ALDE & Renew family (liberals)
- ECR family / ECR Group members
- Greens/EFA
- The Left (far-left)
- Patriots for Europe (far-right)
- ESN (extreme-right)
- Independents



Performance of the EPP family in national opinion polling

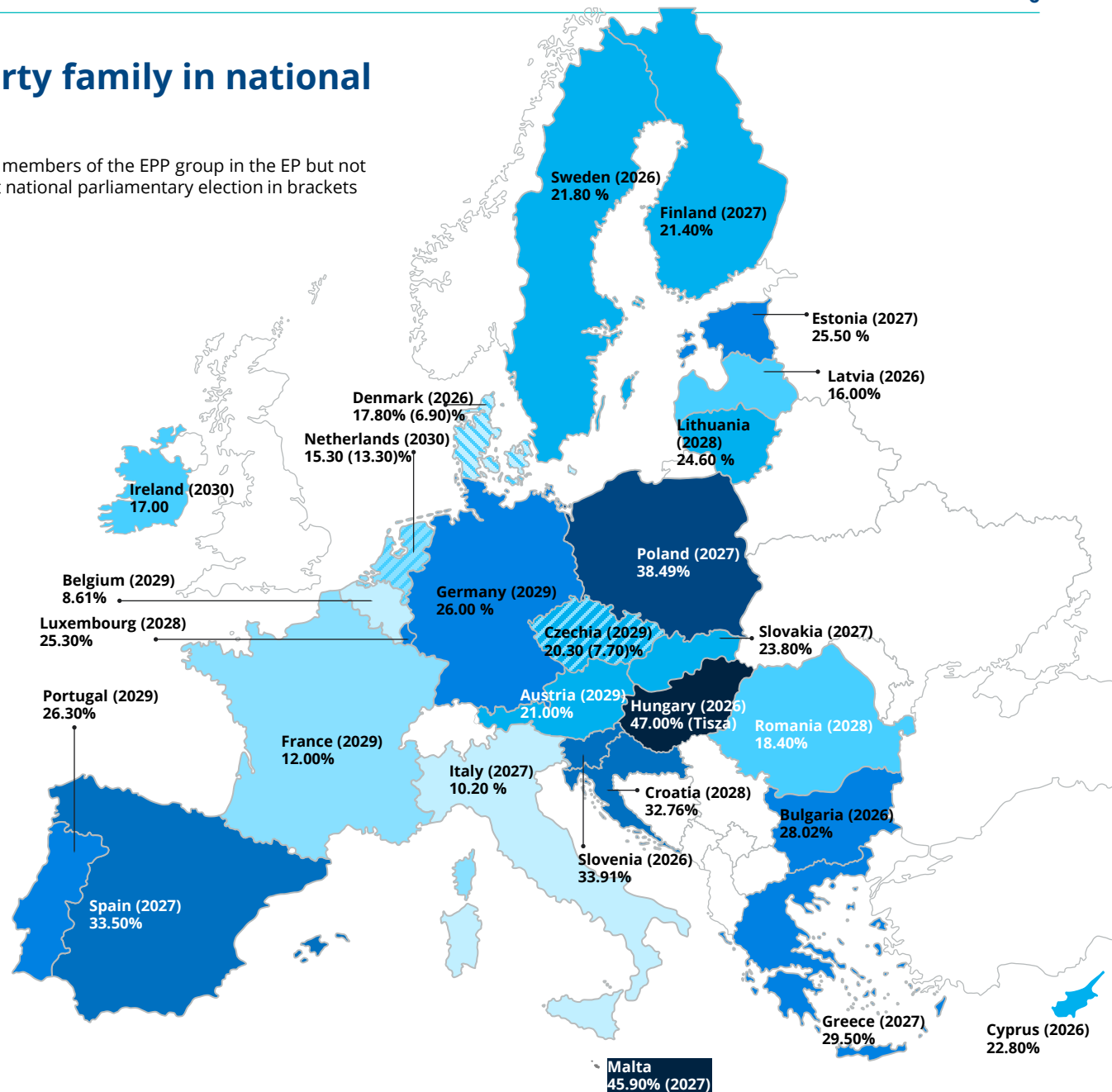
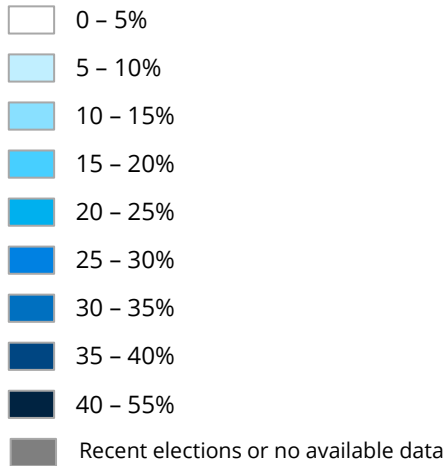
Outlook for the EPP family in 2026

- › In the **Netherlands**, the CDA has increased their number of seats substantially at the October 2025 elections, achieving 11.79% of the vote. Thanks to a massive surge in support in the last two weeks, the liberal D66 won slightly ahead of the far-right PVV. Overall, far-right parties however maintained their strength. On 27 January, D66, VVD (both liberal) and CDA will present an agreement for a minority coalition, the new government might start end of February.
- › In **Slovenia**, ahead of the March legislative elections, the EPP party SDS is leading the race but would need coalition partners. NSi would enter the parliament as well, possibly also the centre-right Demokrati who have split from SDS. The incumbent coalition (without EPP parties) would likely not gain a majority.
- › For the **Hungarian** parliamentary elections in April 2026, the outlook seems open. Depending on the political affiliation of the polling institute, Fidesz (PfE) or Tisza (EPP) are ahead. Other parties may struggle to enter the parliament.
- › In **Cyprus** (legislative elections in May) the EPP party DISY has somewhat lost support in the polls but is now slightly ahead the far-left AKEL.
- › Ahead of the legislative elections in **Sweden** (September), the Red-Green opposition is leading in the polls, with the Social Democrats leading by a wide margin. The larger EPP partner party Moderaterna polls around 18-19%, the smaller Christian Democrats around the 4%-threshold. The Sweden Democrats (ECR) are polling around 20-22%.
- › Fragmented picture in **Denmark** ahead of the autumn 2026 legislative elections. The governing coalition would receive ca. 1/3 of the votes. The left-right-camps are polling at the same level. Social Democrats are polling a bit above 20%.
- › Equally fragmented ahead of the autumn parliamentary elections in **Latvia** with five to six parties polling roughly between 9-17%. EPP partner and PM party Jauna Vienotība is recovering after difficult months in the opinion polls and polling at 16.5% (the numbers are lower according to other polling institutes than the used in the barometer).
- › In **Bulgaria**, snap elections have been called and are expected to take place in autumn. EPP affiliated party GERB is leading the race but would according to opinion polls need at least one coalition partner. The overall situation in the parliament is unlikely to change dramatically according to opinion polls.

Strength of the EPP party family in national opinion polling

(The values in brackets exclude parties that are members of the EPP group in the EP but not the EPP party; scheduled latest date of the next national parliamentary election in brackets above)

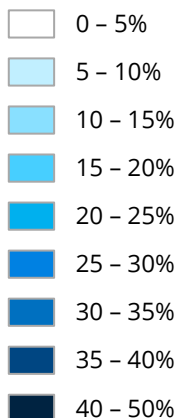
Legend



Election results of the EPP party family in the last national parliamentary election

(Scheduled latest date of the next national parliamentary election in brackets above. The values in brackets exclude parties that are members of the group but not the EPP party)

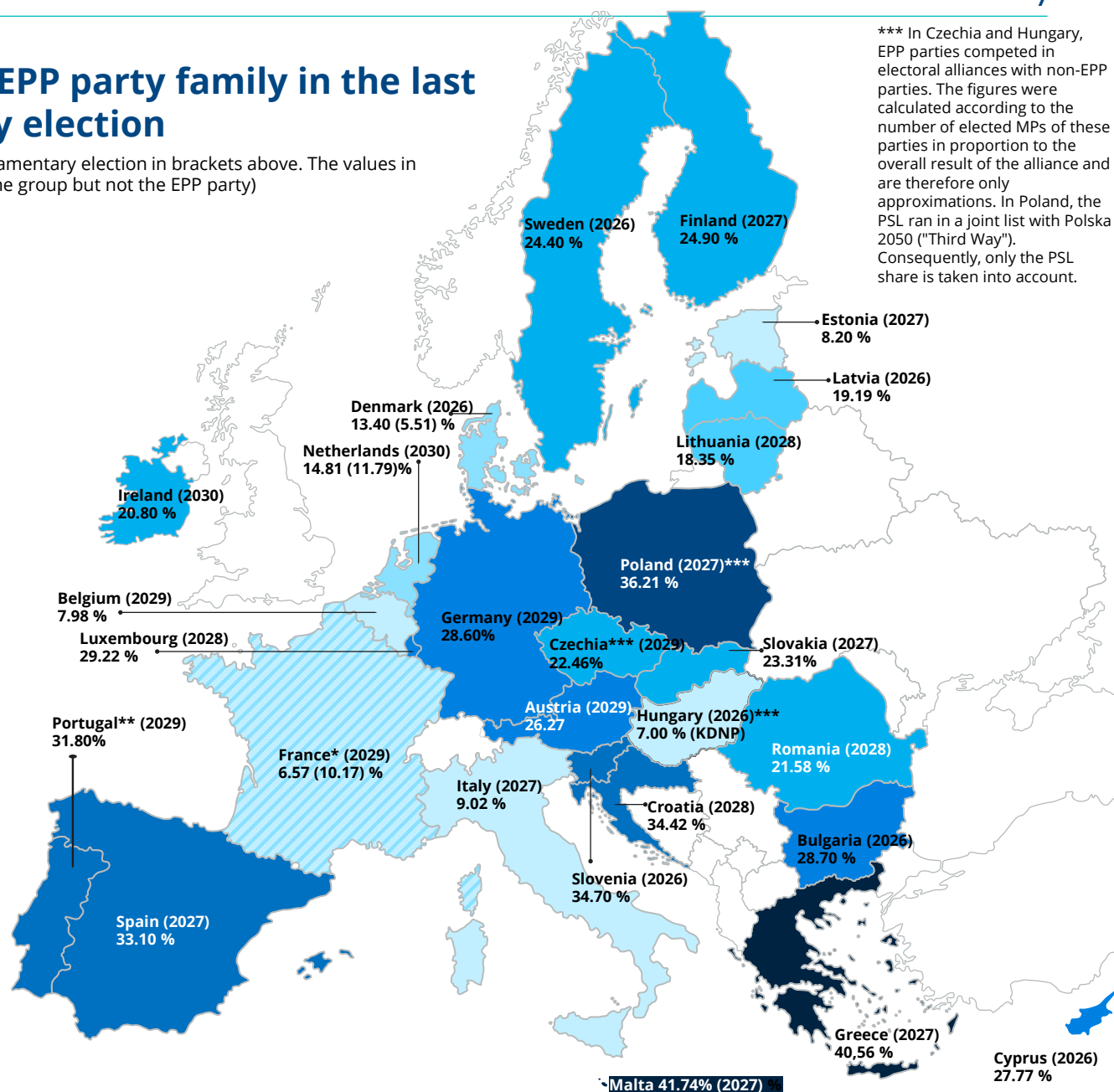
Legend



* the numbers refer to the first round of the 2024 parliamentary election (in brackets incl. divers Droite)

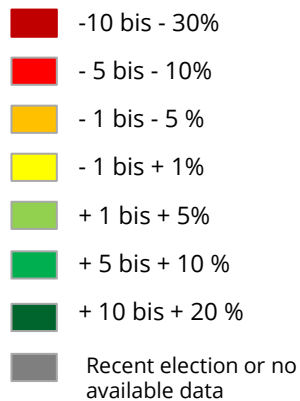
** in Portugal PSD and CDS-PP ran on a joint list

*** In Czechia and Hungary, EPP parties competed in electoral alliances with non-EPP parties. The figures were calculated according to the number of elected MPs of these parties in proportion to the overall result of the alliance and are therefore only approximations. In Poland, the PSL ran in a joint list with Polska 2050 ("Third Way"). Consequently, only the PSL share is taken into account.

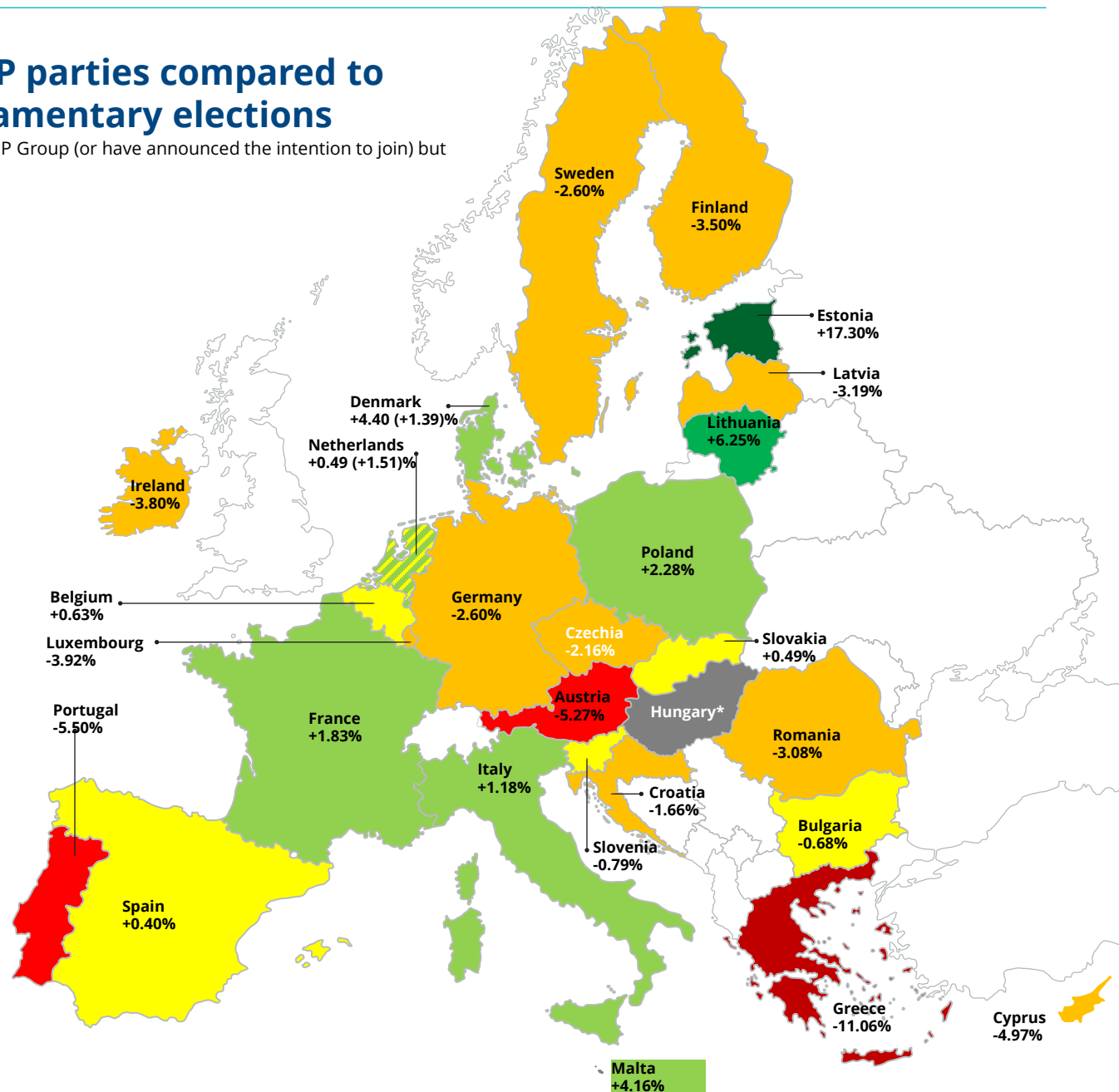


Gains / losses of all EPP parties compared to the last national parliamentary elections

(In brackets: excluding parties that are in the EPP Group (or have announced the intention to join) but that are not in the EPP)



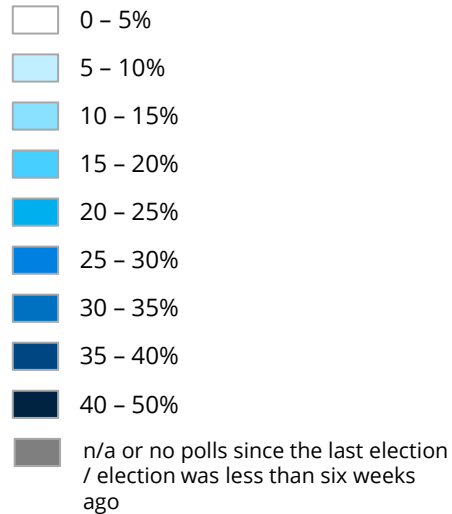
*KDNP left the EPP in the meantime. Tisza is a new party; thus no comparison can be made between current opinion polling and the last parliamentary elections.



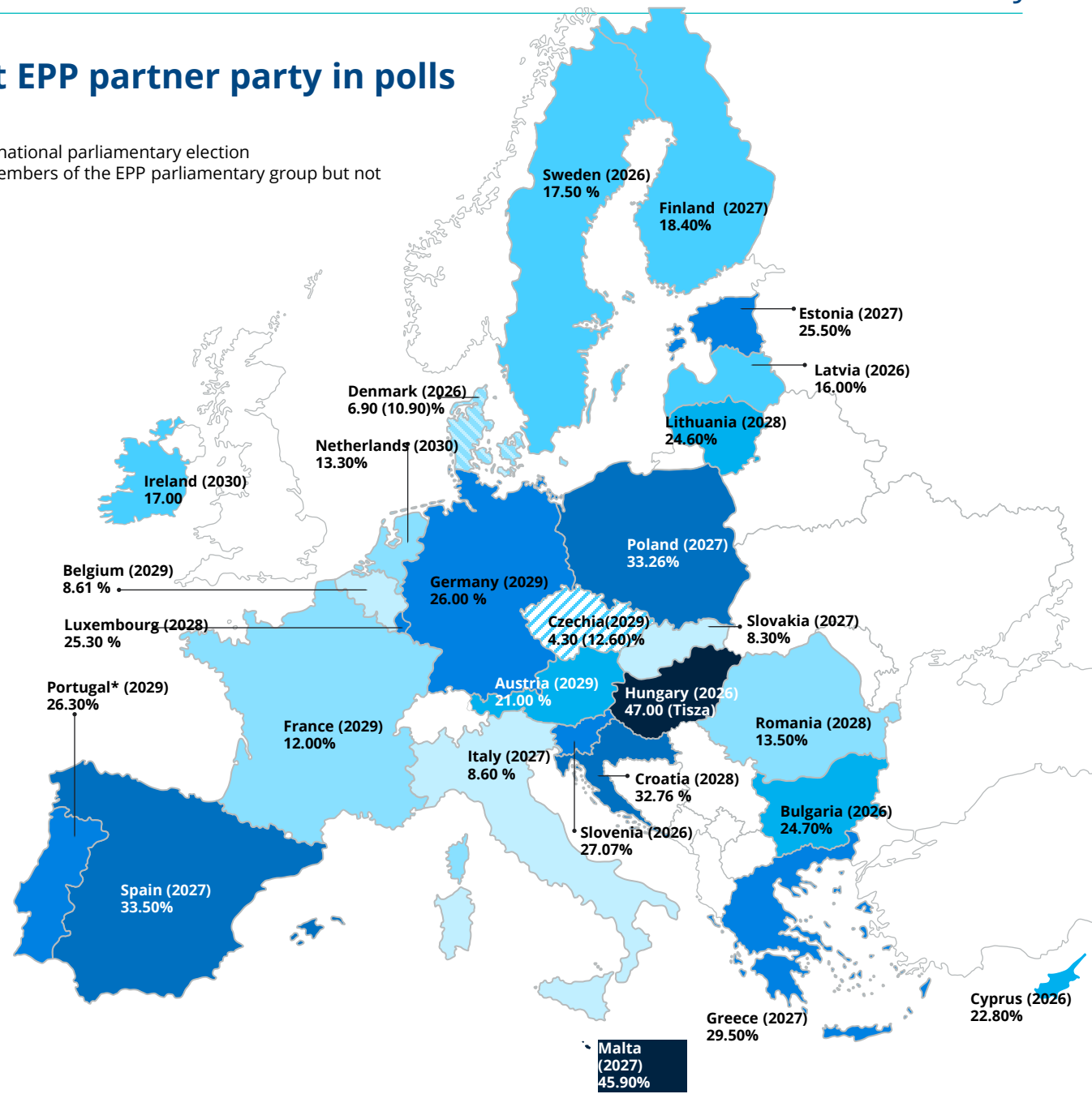
Strength of the largest EPP partner party in polls

In brackets: Latest date for the expected next national parliamentary election
In brackets below: Values of parties that are members of the EPP parliamentary group but not members of the EPP)

Legend



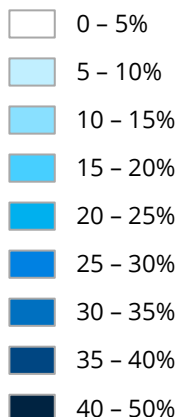
*PSD and CDS-PP agreed to a joint list for the national and EP elections.



Election results of the largest EPP partner party in the last national parliamentary elections

(In brackets above: Latest date for the expected next national parliamentary election.
In brackets below: Values of parties that are members of the EPP parliamentary group but not members of the EPP)

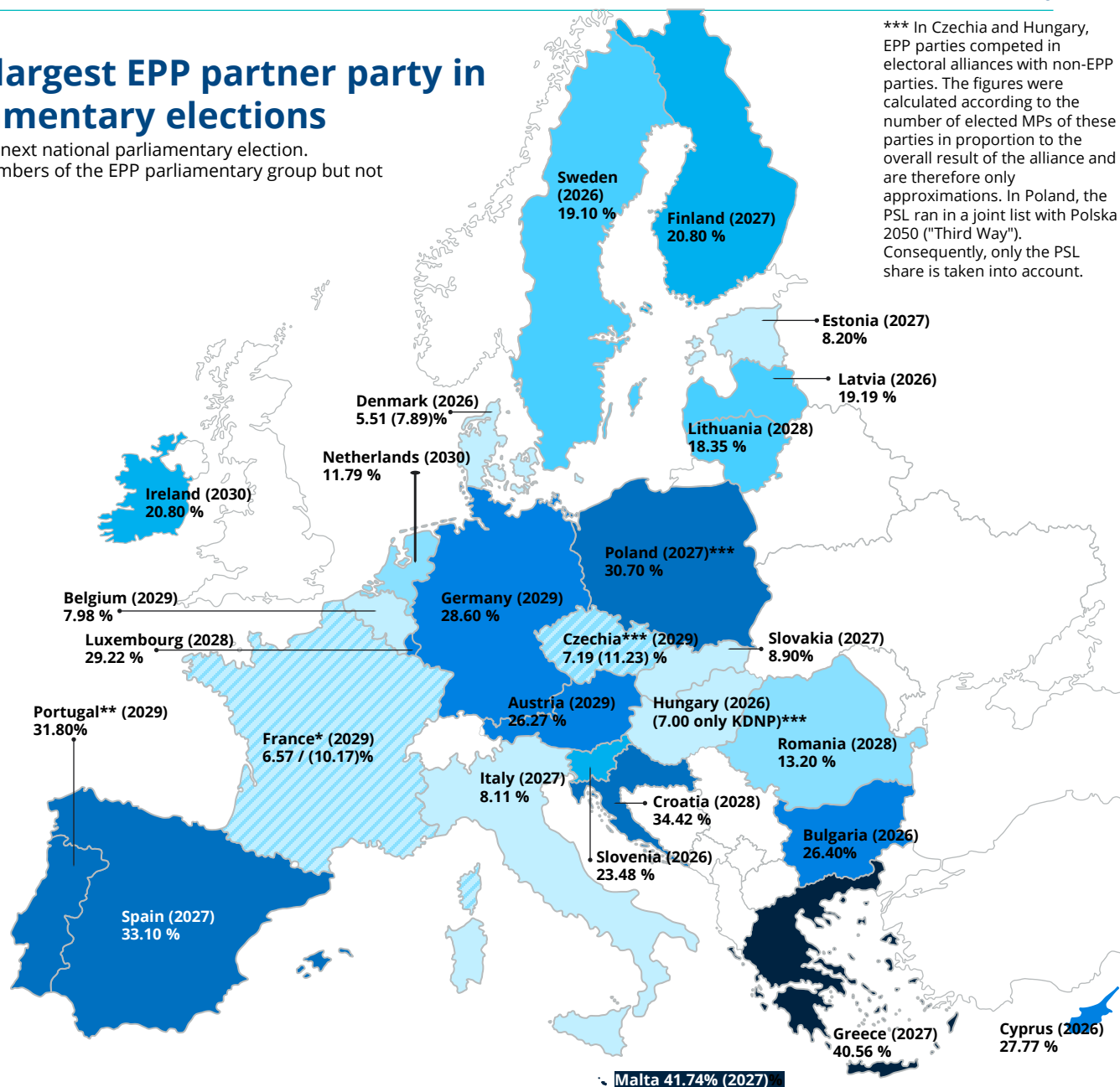
Legend



*the numbers refer to the first round of the 2024 parliamentary election (in brackets incl. Divers Droite)

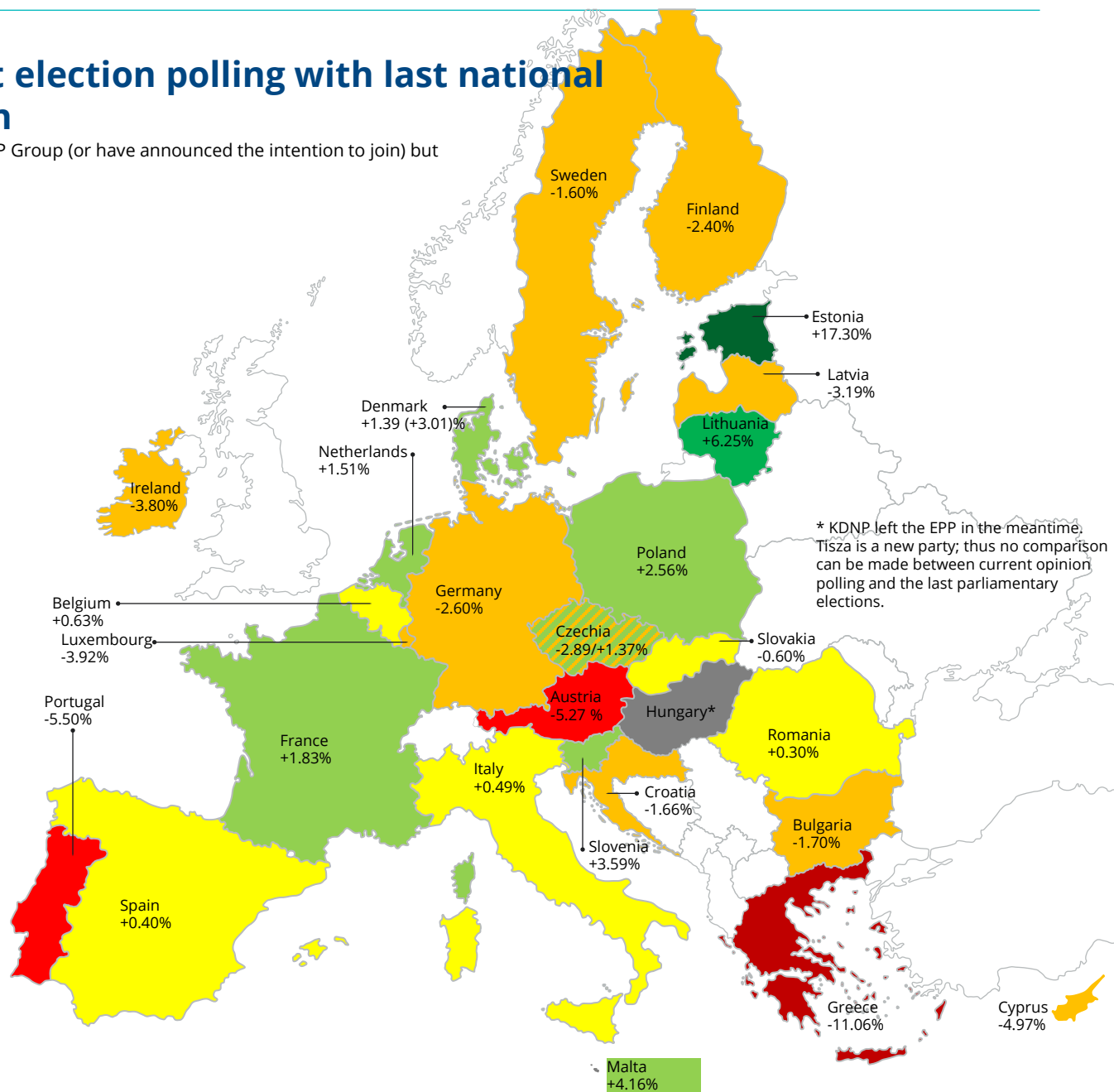
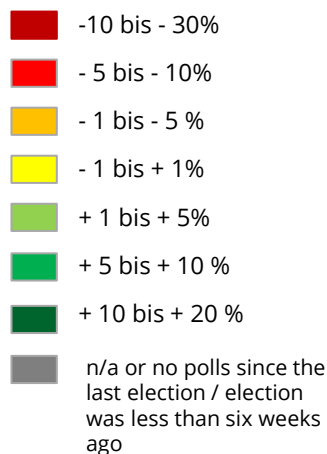
**In Portugal, the PSD entered into list combinations with the CDS-PP in the Azores and Madeira. Only the result of the individual list is counted here.

*** In Czechia and Hungary, EPP parties competed in electoral alliances with non-EPP parties. The figures were calculated according to the number of elected MPs of these parties in proportion to the overall result of the alliance and are therefore only approximations. In Poland, the PSL ran in a joint list with Polska 2050 ("Third Way"). Consequently, only the PSL share is taken into account.



Comparison of current election polling with last national parliamentary election

(In brackets: including parties that are in the EPP Group (or have announced the intention to join) but not in the EPP)

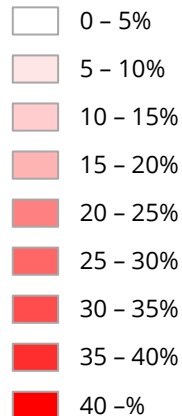


Opinion polling of other political forces

Strength of the PES family (Socialists and Social Democrats) in current opinion polls or last national elections in the EU

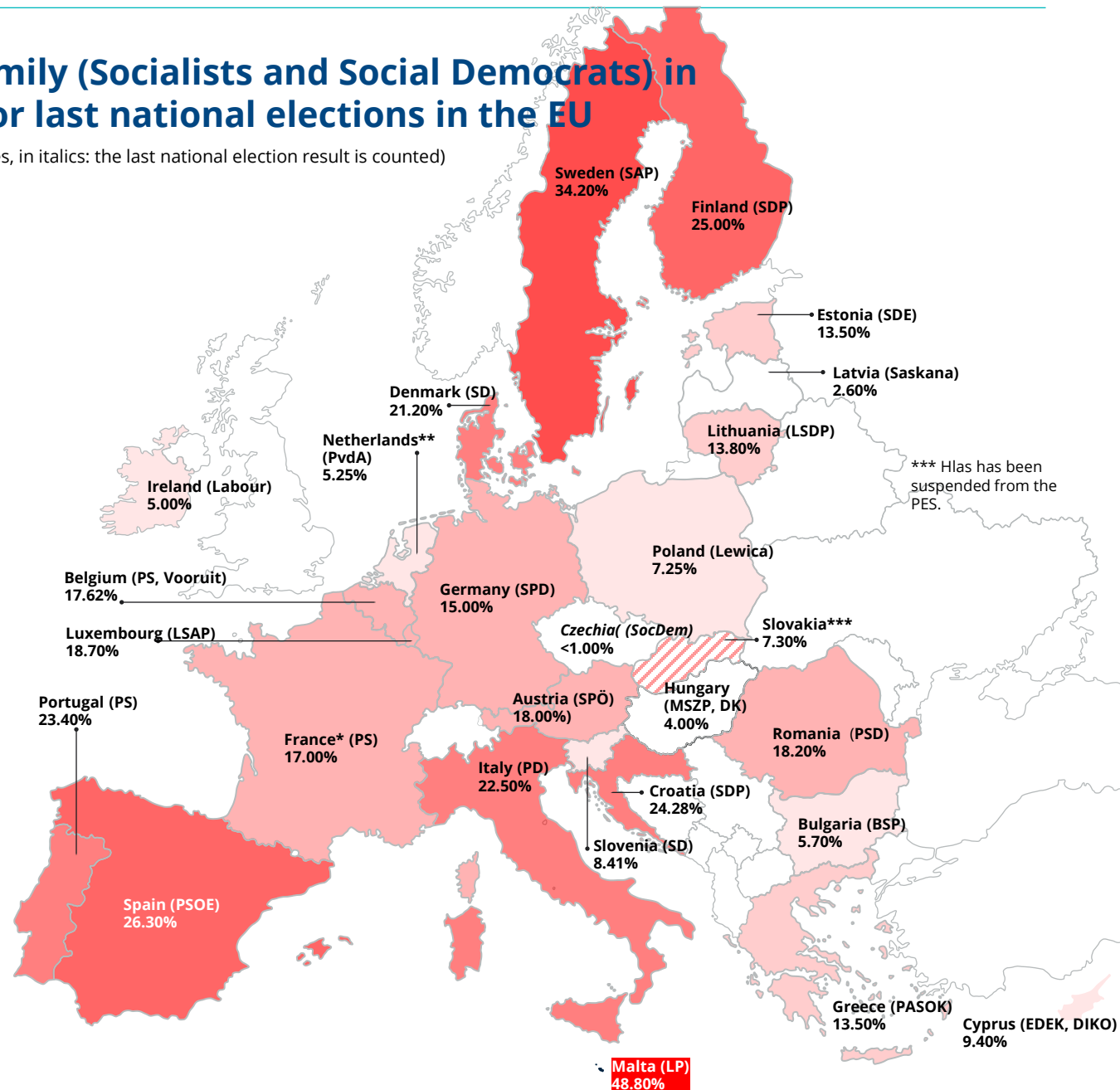
(In brackets at the top: national member parties, in italics: the last national election result is counted)

Legend



* including PCF which is not a PES member

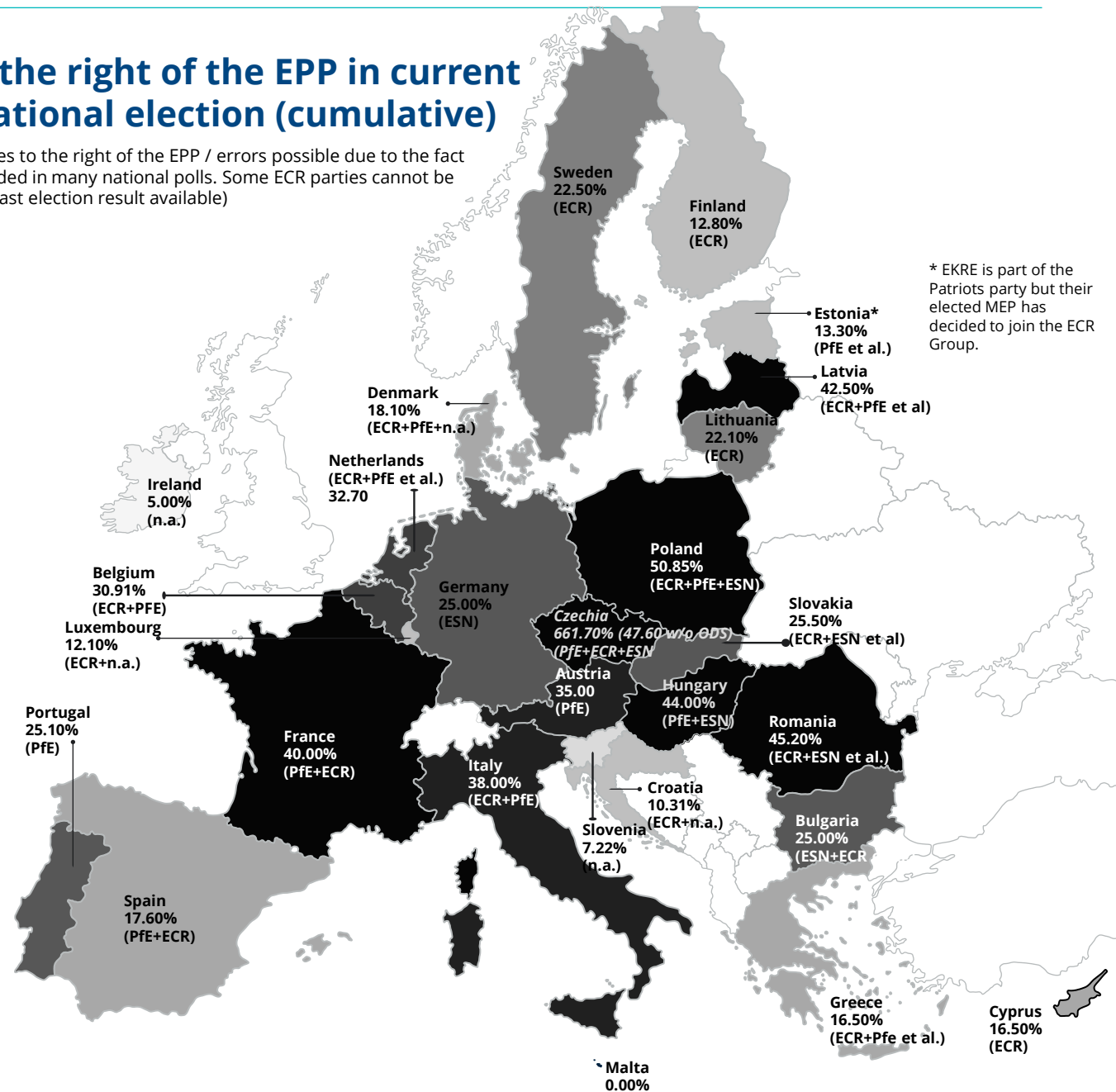
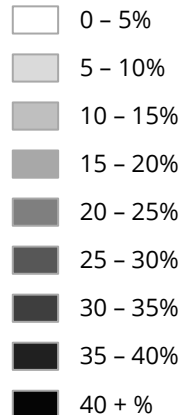
** In the Netherlands, the PvdA was running on a joint list with GroenLinks, therefore just half of the polling result is counted here.



Strength of parties to the right of the EPP in current opinion polls or last national election (cumulative)

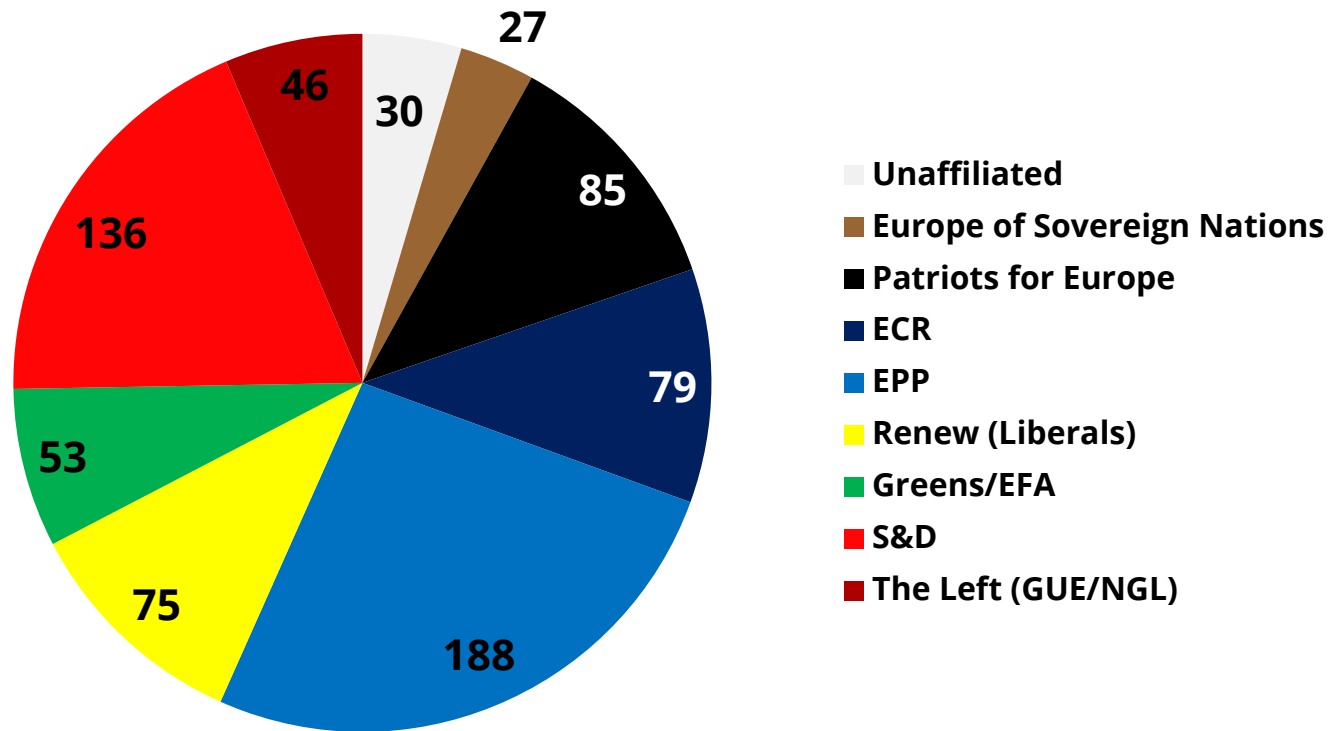
(In brackets party families of the national parties to the right of the EPP / errors possible due to the fact that micro-parties at the far-right are not included in many national polls. Some ECR parties cannot be considered as far-right parties / in italics: only last election result available)

Legend

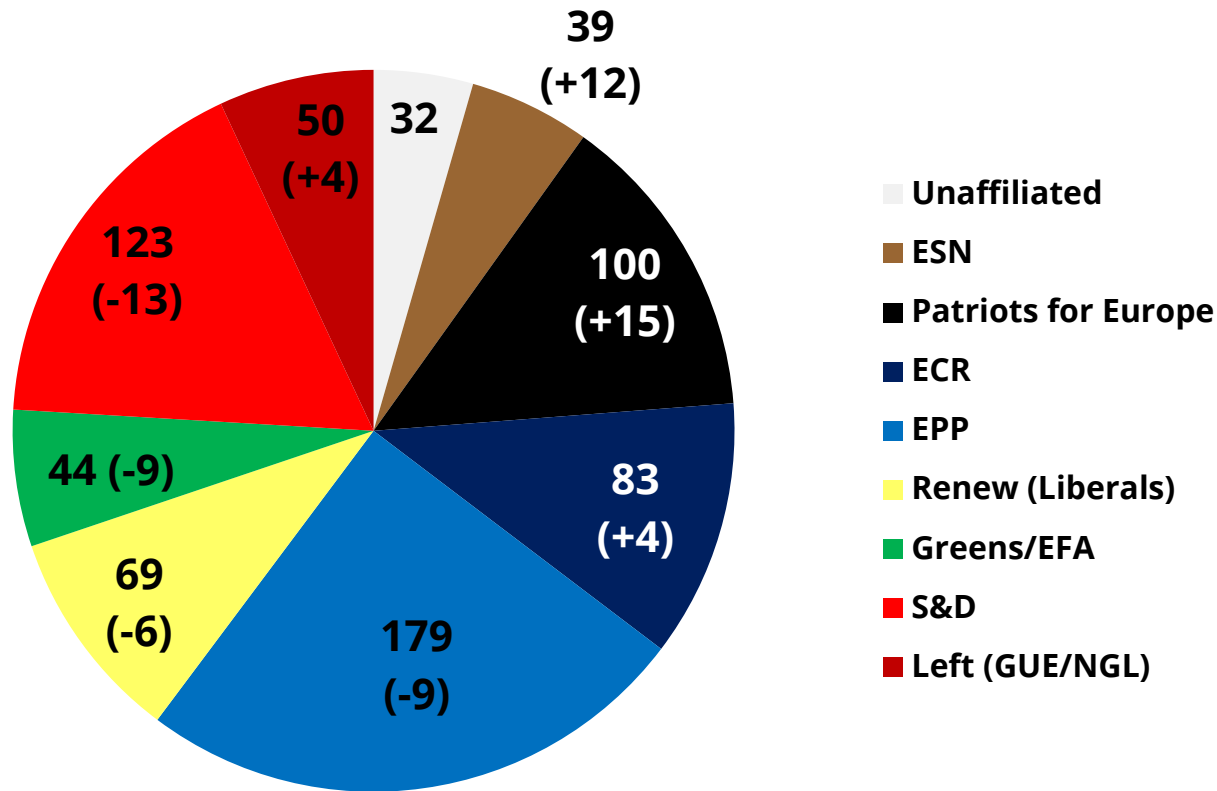


Composition of the European Parliament

Current composition of the EP as of 10 October 2025



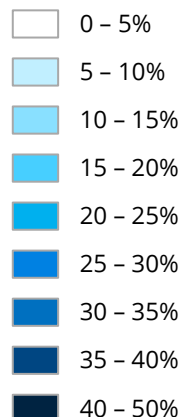
Projection of EP seat distribution under a status quo scenario (political affiliations remain the same, no new groups) compared to the current EP



Strength of the EPP party family in the 2024 EP elections

(in brackets at the top: national member parties of the elected MEPs (shaded: MEP is member of the group but the national party is not (yet) a member of the EPP party, in brackets at the bottom: seats in the new European Parliament)

Legend

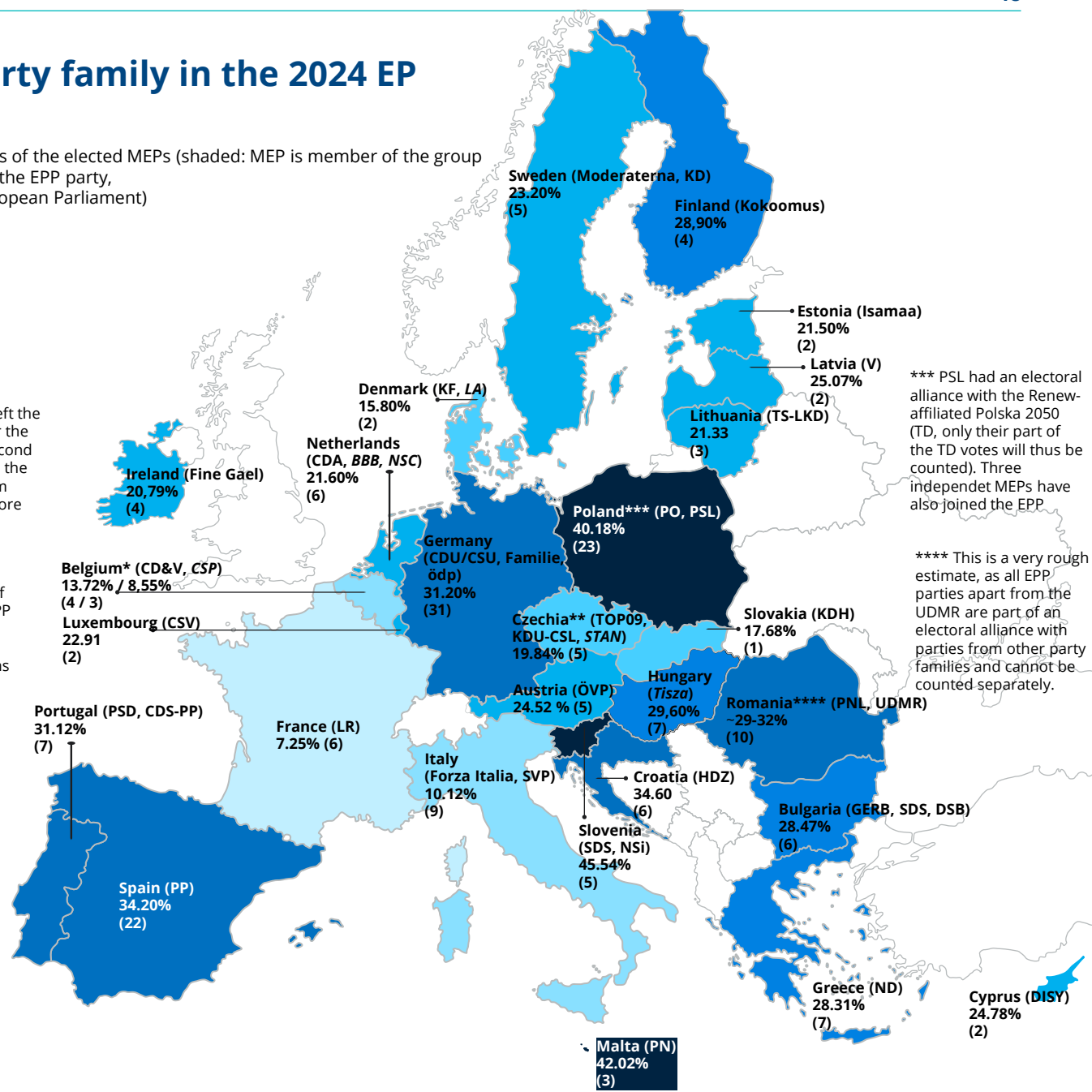


* Les Engagés left the EPP Group after the election. The second number reflects the result in Belgium without their score

** As SPOLU is a joint list of the ECR and two smaller EPP parties, only some of the elected MEPs will belong to the EPP group, which means that only half of the EPP result will be counted here

*** PSL had an electoral alliance with the Renew-affiliated Polska 2050 (TD, only their part of the TD votes will thus be counted). Three independent MEPs have also joined the EPP

**** This is a very rough estimate, as all EPP parties apart from the UDMR are part of an electoral alliance with parties from other party families and cannot be counted separately.



Government participation of the EPP family

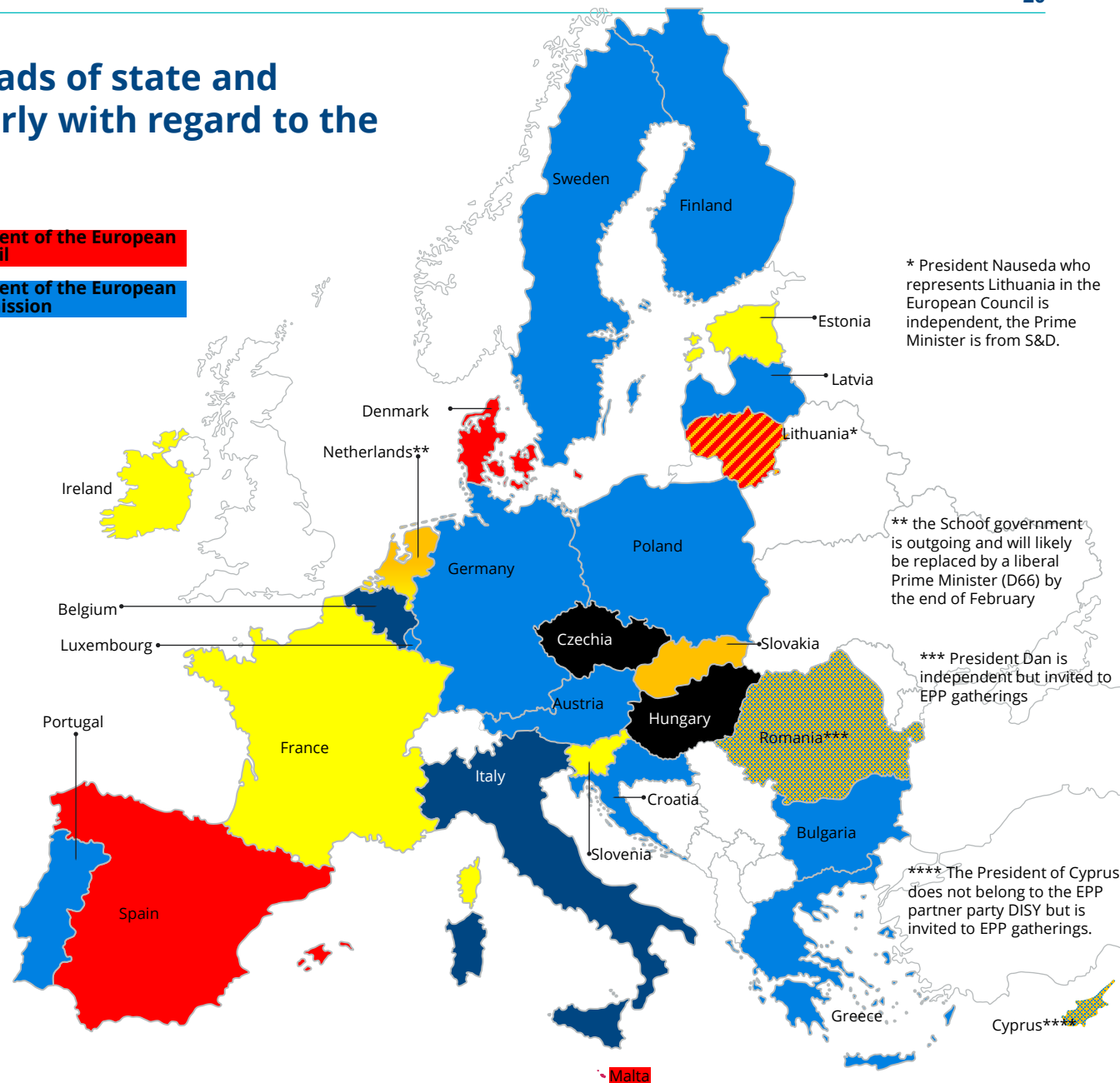
Political families of heads of state and government (particularly with regard to the European Council)

Legend

- EPP family
- PES / S&D-family
- Renew-Familie (Liberals)
- ECR Group / Family
- Greens
- The Left (GUE/NGL)
- Patriots for Europe (far-right)
- Independents (far-right)
- Other independents

President of the European Council

President of the European Commission



* President Nauseda who represents Lithuania in the European Council is independent, the Prime Minister is from S&D.

** the Schoof government is outgoing and will likely be replaced by a liberal Prime Minister (D66) by the end of February

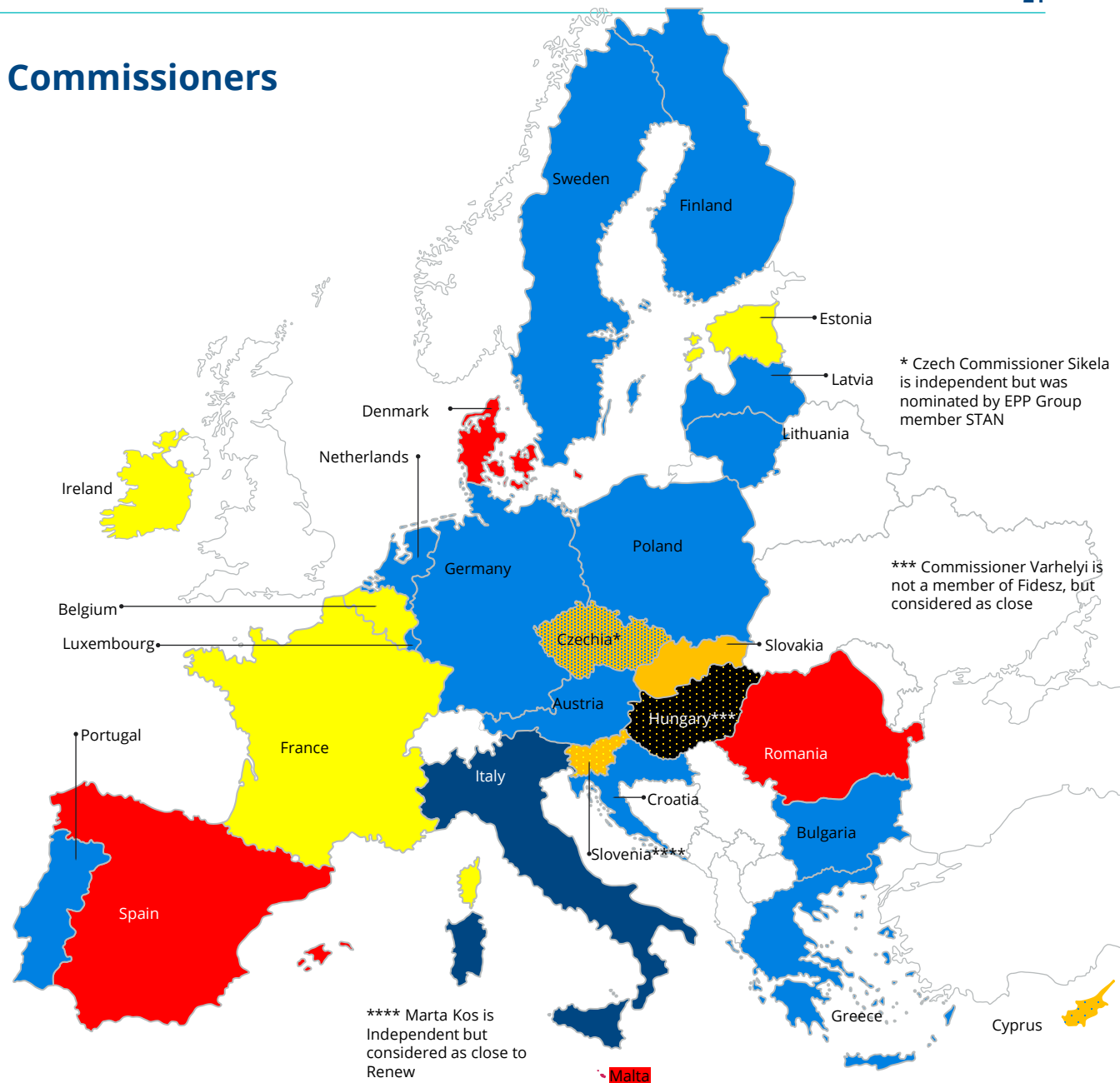
*** President Dan is independent but invited to EPP gatherings

**** The President of Cyprus does not belong to the EPP partner party DISY but is invited to EPP gatherings.

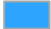
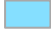
Political families of EU Commissioners

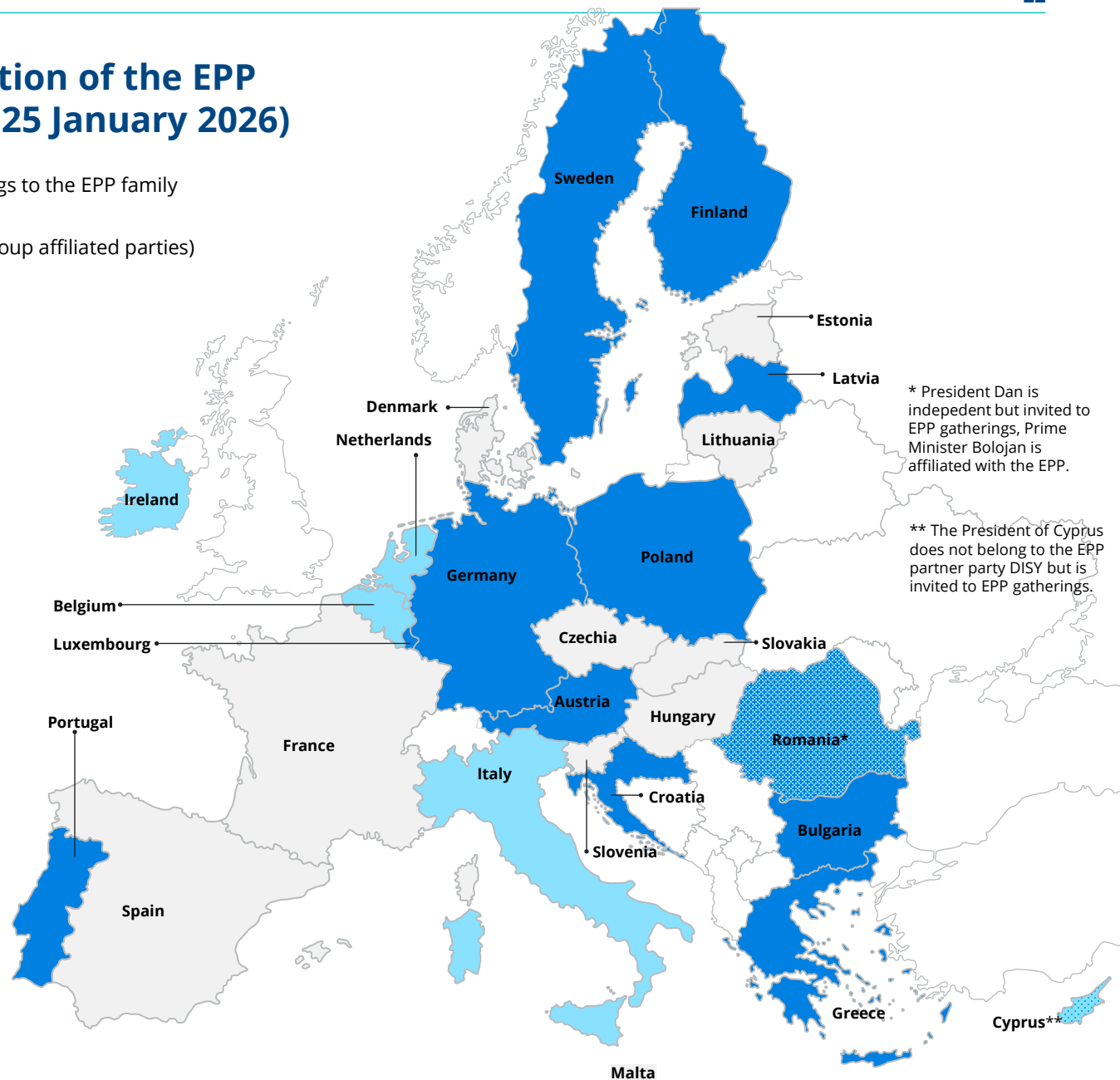
Legend

- EPP family
- PES / S&D-family
- Renew-Familie (Liberals)
- ECR family
- Greens/EFA
- The Left (GUE/NGL)
- Patriots for Europe (far-right)
- Independents (far-right)
- Other independents



Government participation of the EPP family in the EU (as of 25 January 2026)

-  Head of state or government belongs to the EPP family
-  Parties of the EPP family (or EPP Group affiliated parties) participate in the government



Remarks

- › In Belgium, polls are only conducted at regional level: In order to obtain an adequate result at national level, these individual results were weighted according to the number of eligible voters (voting is compulsory) and the actual voter turnout. This may lead to small deviations. In Belgium, the partner parties CD&V, CSP only compete regionally. The results in the individual regions are weighted accordingly. The CSP only competes in European elections.
- › In several countries, the undecided and non-voters are included in the total (100%) in the polls. The poll results have been extrapolated accordingly. Example: Party A has 13% in the polls. 30% of respondents will not vote. 20% of respondents are undecided. Accordingly, support for party A is given as 26%.
- › In Germany, the CDU and CSU are not cited as two separate parties due to the parliamentary grouping and the fact that they are always added together in polls.
- › In Poland, the KO is strongly dominated by the PO, even though other smaller parties not belonging to the EPP are also members of the PO. Accordingly, the KO result is counted entirely as an "EPP result". The Third Way was an alliance of PSL and Polska 2050. Only the PSL result is taken into account for the overall result where applicable.
- › In several countries, parties are part of the EPP group without belonging to the EPP. In some cases, they even belong to a different party family. This applies to BBB & NSC in the Netherlands, among others, STAN in Czechia, Liberal Alliance in Denmark. The corresponding results are listed in brackets.
- › Some of the parties belonging to the ECR family are right-wing populist or have strong right-wing populist elements. As this is now an established family of parties, parties belonging to it are listed as part of the ECR family and not as "right-wing populist".
- › In Czechia, the parties that are part of the EPP group in the EP ran in an electoral alliance with non-EPP parties. The KDU-CSL and TOP 09 have an alliance with the ODS (ECR). The values were calculated according to the number of elected MPs of these parties in proportion to the overall result of the alliance and are therefore only approximations. The same applies to two of the EPP member parties in Bulgaria.
- › In Hungary, no separate poll results are shown for KDNP (EPP) and Fidesz (no longer part of the EPP since 2021). KDNP left the EPP in the meantime. Tisza is a new party; thus no comparison can be made between current opinion polling and the last parliamentary elections.

Sources

Ipsos (Belgium), Market Links (Bulgaria), Voxmeter (Denmark), FG Wahlen (Germany), Norstat (Estonia), Verian (Finland), Ifop (France), Pulse RC (Greece), Ireland thinks (Ireland), SWG (Italy, Ipsos (Croatia), SDKS (Latvia), Spinter tyrimai (Lithuania), Ilres (Luxembourg), Malta Today (Malta), Ipsos (Netherlands), Market Lazarsfeld (Austria), Ibris (Poland), Intercampus (Portugal), INSCOP (Romania), Novus(Sweden), Ipsos (Slovakia), Mediana (Slovenia), NC Report (Spain), STEM (Czechia), Republikon (Hungary), Stratego IMR (Cyprus) .

Impressum

Konrad-Adenauer-Stiftung e. V.

Dr. Olaf Wientzek

Director of Multinational Development Policy Dialogue Brussels
European and International Cooperation
olaf.wientzek@kas.de

Editor: Konrad-Adenauer-Stiftung e. V. 2026. Berlin



The text of this work is licensed under the terms of "Creative Commons Attribution-ShareAlike 4.0 international". CC BY-SA 4.0 (available at: <https://creativecommons.org/licenses/by-sa/4.0/legalcode.de>)