



EAST AFRICAN COMMUNITY Lake Victoria Basin Commission



ZIWA LETU CONFERENCE

**13 OCTOBER 2016
MWANZA - TANZANIA**

**HIGHLIGHT OF EAC REGIONAL COOPERATION
AGENDA AND ENVIRONMENTAL POLICIES ON LVB**

**Presented by Dr Ally-Said, MATANO
[EXECUTIVE SECRETARY - LVBC]**



HIGHLIGHTS OF EAST AFRICAN COMMUNITY



- EAC is a REC established through a Treaty and currently has a membership of 6 Partner States
- The overall objective of the EAC is to widen and deepen co-operation among the Partner States in political, economic, social, cultural fields, research and technology, defense, security, legal and judicial affairs.
- The mission is to widen and deepen economic, political, social and cultural integration in order to improve the quality of life of the people of EA



MILESTONES & DRIVERS OF REGIONAL COOPERATION



- The regional integration agenda for the EAC is anticipated through 4 major milestones set by HOS:
 - ✓ Custom Union (2005)
 - ✓ Common Market (2010)
 - ✓ Monetary Union and
 - ✓ Political Federation.
- The Treaty established an EACJ and EALA which commenced operations in 2001.
- The Treaty integrated the surviving institutions of the defunct EAC (EADB, IUCEA, LVFO)



INSTITUTIONAL FRAMEWORK OF THE COMMUNITY



- The EAC has Organs and Institutions as the vehicles for her regional integration agenda:
- Organs: Summit, the COM (supported by CC, SC), EALA, EACJ, Secretariat of the Community
- Institutions: EADB, LVFO, LVBC, CASSOA, IUCEA, EASTCO, EAHRCO, EAKCOM
- COM – complemented by Sectoral Council of Ministers largely responsible for sector specific policy issues.



EAC ENVIRONMENTAL POLICIES AND PROGRAMMES TOWARDS SUSTAINABLE MANAGEMENT AND DEVELOPMENT OF LVB



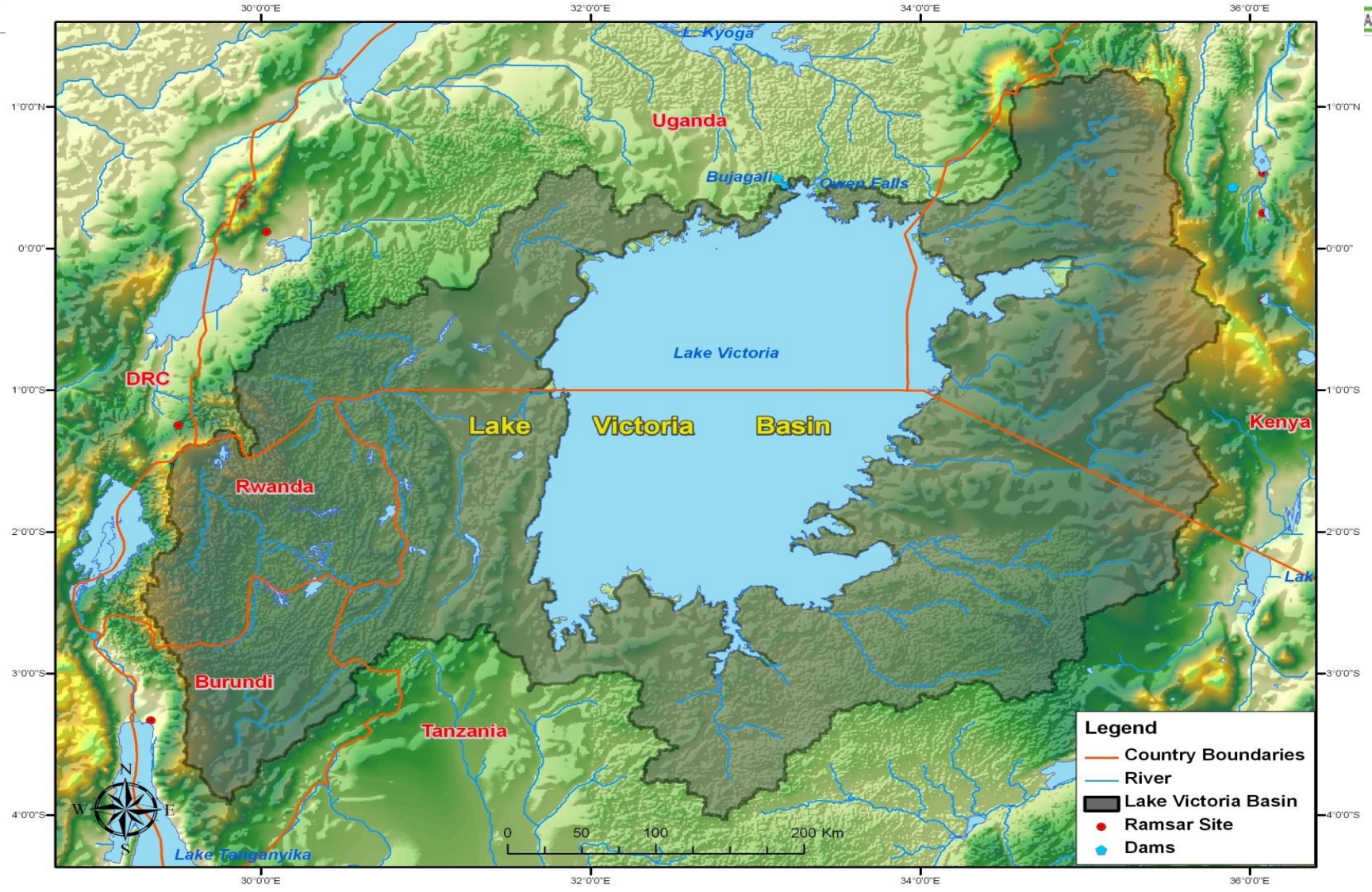
- LVB - strategically positioned because of the shared lake and basin/linkages (epicenter for regional integration/natural integration – socially, culturally and geopolitically integrated;
- 2nd largest in the world and 1st in Africa;
- Endowed with environmental/natural resource base yet high levels of poverty (environmental sustainability – wealth creation nexus)





LVBC






OVERVIEW OF LVB





DESCRIPTION OF LVB



Country	Flag	Lake Surface Area		Catchment Area		Lake Shoreline	Population
		Sq Km	%	Sq Km	%	%	(million)
Tanzania		35,124	51	79,570	44	33	6.5
Uganda		29,613	43	28,857	15.9	50	11.8
Kenya		4,113	6	38,913	21.5	17	13.8
Rwanda		-		20,550	11.4	0	7.9
Burundi		-		13,060	7.2	0	
Total		68,870		180,950		100	40



MORE FACTS ABOUT THE LAKE



Parameter	Figures
Surface Area	68,870 Km ²
Average Depth	40m
Maximum Depth	84 Meters
Shore line length	4828 Km
Volume	2750 cubic Kilometers
Source of water	Precipitation- 82% Rivers – 18%
Loss of water	Evaporation – 76% River Nile Outflow – 24%
Water Residence Time	23 Years
Flushing Time	123 Years





TRANSBOUNDARY PROBLEMS IN LVB



- Land use and land degradation;
- Water Quality and Pollution
- Eutrophication in the Lake Victoria





TRANSBOUNDARY PROBLEMS IN LVB



- Water Quantity and Water Balance
- Water Hyacinth and other Aquatic Weeds
- Decline in biodiversity and Fisheries resources

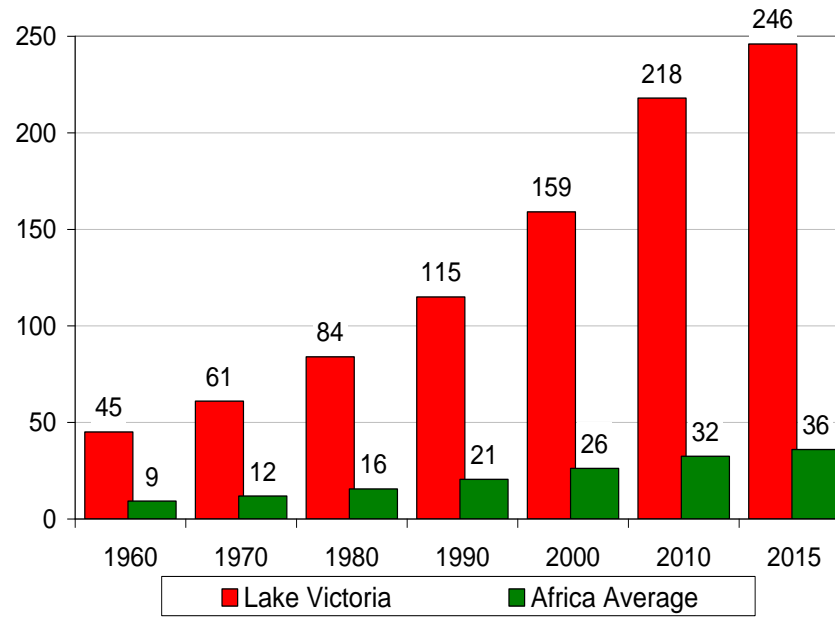




TRANSBOUNDARY PROBLEMS IN LVB

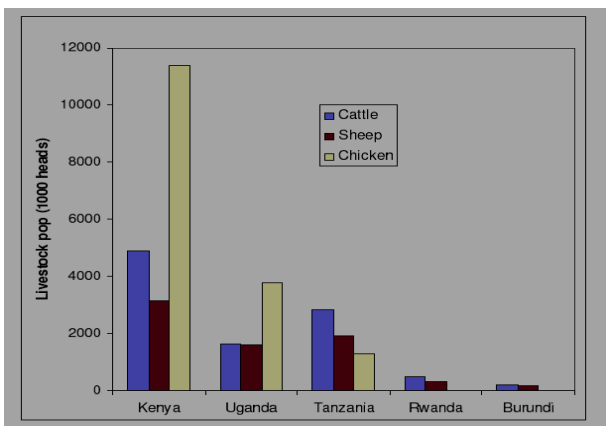
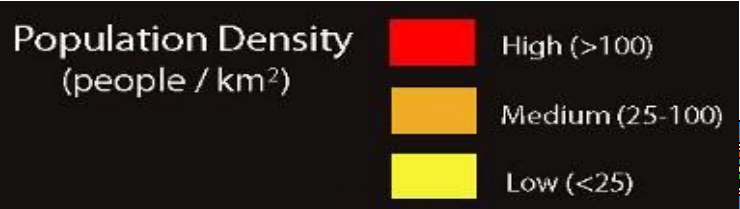
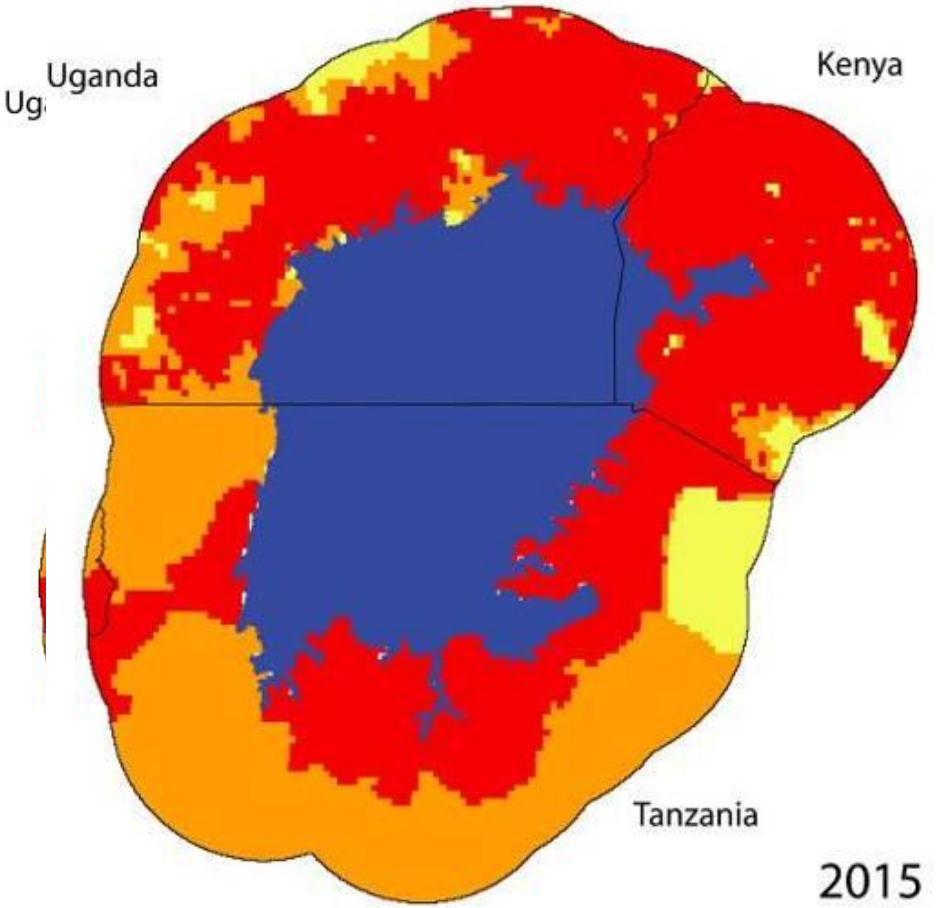


- Forest ecosystem change
- Encroachment into wetlands
- Population (Humans and livestock)





POPULATION CHALLENGES





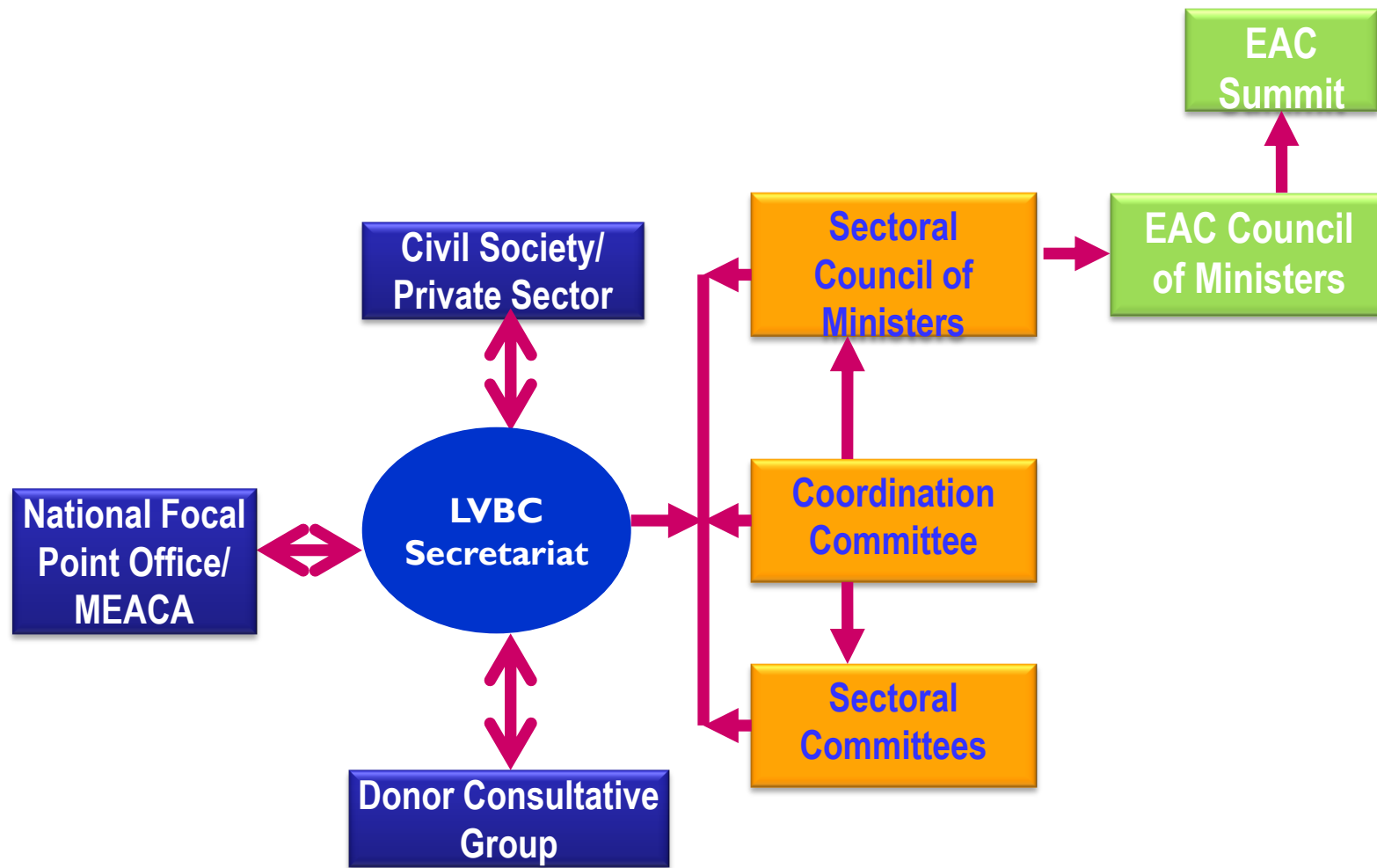
CALL FOR INSTITUTIONAL AND LEGAL FRAMEWORK - LVBC



- Treaty (1999)- Article 114, 2 b (vi) Partner States to establish a body for Lake Victoria;
- Management to be in line with the Rio 92 principles = SD
- A LRBO within a REC (Protocol for Sustainable Development of LVB)
- Five objects – Equity economic growth, poverty, Sustainable use of NR, Environmental protections and compliance to safety of navigation
- Broad mandate/scope of cooperation



GOVERNANCE STRUCTURE EMBEDDED WITH A REC





EAC'S LONG TERM VISION AND STRATEGY FOR LVB



- The SVSF is the principal management instrument and a development blue print for the management and development of LVB
- It was developed between Nov 2001 and Aug 2003
- In January 2004 – EAC Council of Ministers adopted the Shared Vision
- The 2005 EAC Council of Ministers directed Partner States, CSOs, Private Sector + other development Partners to adopt SVSF as a development guideline in sustainable management of LVB



THE EAC SHARED VISION AND STRATEGIC FRAMEWORK FOR LVB



**PROSPEROUS POPULATION IN A
HEALTHY ENVIRONMENT PROVIDING
OPPORTUNITIES AND BENEFITS**

**ENVIRONMENT, NR &
ECOSYSTEMS**

**PRODUCTION AND
INCOME GENERATION**

**LIVING CONDITION &
QUALITY OF LIFE**

**POPULATION AND
DEMOGRAPHY**

**POLICY, GOVERNANCE &
INSTITUTIONS**

**PROTOCOL FOR SUSTAINABLE DEVELOPMENT OF LVB
(ANNEXTURE OF THE TREATY)**



STRATEGY FOR ACHIEVING THE SHARED VISION



The framework is premised on 5 policy areas:

1. Facilitating enhanced management of ecosystem, natural resources and a clean and healthy environment
2. Promoting production and income generation – resources are sustainably and equitably used for increased income and poverty reduction.
3. Improving living condition and quality of life – to ensure a healthy, well educated society with high quality of life and well developed infrastructure.



STRATEGY FOR ACHIEVING THE SHARED VISION (KPA)



4. Addressing population and demography – to ensure a healthy, competent and productive population with positive mindset to achieve economic growth and development.
5. Harmonization of Policies and strengthening of Institutions and governance- this ensures a well integrated institutional framework enabled by conducive policy environment that facilitates broader participation in management of resources.



EAC's SPECIFIC POLICIES ON LVB



- All environmental policies for EAC primarily anchored on the Treaty (1999) – supplemented by the Protocol on ENV (2006), LVB (2003) and LVFO Convention (1994)
- Legal and institution framework for LVB, is anchored on Article 114 (2b)(vi) of the Treaty
- The Article is the foundation for the Protocol for Sustainable Development of LVB – principally adopted instrument for promoting sustainable development within the LVB (quite unique framework for management of TB ecosystems).



LVBC'S PROJECTS & PROGRAMS



PROJECTS/PROGRAM	PRIORITY AREAS
LVEMPII (WB, SIDA, GEF)	Environmental sustainability & Livelihood improvement and Policy harmonization
LVWATSAN II (AFDB)	MDG target on WATSAN and Environmental Hygiene
Integrated PHE Program (USAID)	Promoting the integration of population & health in Environmental management
PREPARED (USAID)	Strengthening Resilience to Climate change and biodiversity conservation (Focus: Climate Change, WASH and Biodiversity conservation)
MERECAP (NORAD)	Linking biodiversity and Environmental conservation to livelihood/SCMA – PPCP



PIPELINE PROJECTS



PIPELINE PROJECTS	PROJECT FOCUS	ESTIMATED COST (USD/EURO)
<p>1. MERECPII/Norway</p>	<p>institutionalize transboundary natural resource management (TBNRM); strengthen public-private-civic partnerships ; secure and coordinate investment in value chains.</p>	<p>9,120,000 (Additional funding expected from potential partners (Livelihood Fund) and Private Sector, CSO and County/District governments</p>
<p>1. EAC CORRIDOR DEVELOPMENT - LVP</p>	<p>Based on EAC MMT strategy. The LVP component focuses on: ports and railway rehabilitation, bathymetric survey of the lake, etc</p>	<p>WB & other development partners USD 450 million</p>





PIPELINE PROJECTS



PROJECTS/PIPELINE PROJECTS/DONOR ₁	PROJECT FOCUS	COST (USD)
<p>1. MULTINATIONAL LV MARITIME COMMUNICATION & TRANSPORT</p>	<ul style="list-style-type: none"> - Establishment of a Maritime communications system for safety on Lake Victoria (MRCC, SAR, MTN) - Maritime Transport Study: Development of East African Maritime Transport Strategy; and Preparation of Lake Victoria Transport Development Programme; 	<p>AFDB 27,497,800</p>





PIPELINE PROJECTS



PROJECT	FOCIS	COST
<p>1. LVB CLIMATE CHANGE ADAPTATION /Adaptation Fund</p>	<ul style="list-style-type: none"> – Management of a transboundary water catchment; Climate information and decision-making; – Climate change adaptation in vulnerable communities; Small grants programme; KM and learning 	<p>CCF: USD 5 Million</p>
<p>1. LVB IWRM WITH HIGH PRIORITY INVESTMENTS</p>	<p>Based on a protocol agreement signed between the EAC and the Federal Government of Germany to finance the initial interventions on IWRM in LVB.</p>	<p>20 million euro (Euro 10 million from KfW and Euro 10 million from EU/EDF)</p>





STRATEGIES AND STUDIES



- Lake Victoria Transport Act & Regulations
- Oil spill contingency plan
- BSAP (Mara River Basin)
- EF Assessment (Mara River Basin)
- Mapping of ESA
- Water Release and Abstraction policy
- Sustainable Land Management Strategy
- Forest Law Enforcement and Governance Strategy
- Regional Water Hyacinth Surveillance Strategy
- Regional Water Effluence Standards for LV



COMMUNITY DRIVEN DEVELOPMENT



- (i) Completion of water release and abstraction policy for Lake Victoria Basin Trade and investment;
- (ii) harmonisation of Regional Standards for discharge of Industrial and Municipal Effluents;
- (iii) Development of a Basin-wide strategy for Sustainable Land Management in Lake Victoria Basin;
- (iv) Development of a Regional Water Hyacinth Surveillance and Management Strategy;
- (v) Explored Options for Establishment of Lake Victoria Trust Fund; and
- (vi) Promotion and adoption of CP among Industries in the basin (181/82 Industries).
- (vii) Support to over 270 CCDs



MARITIME TRANSPORT



MV Bukoba that capsized in 1996 killing about 800 people

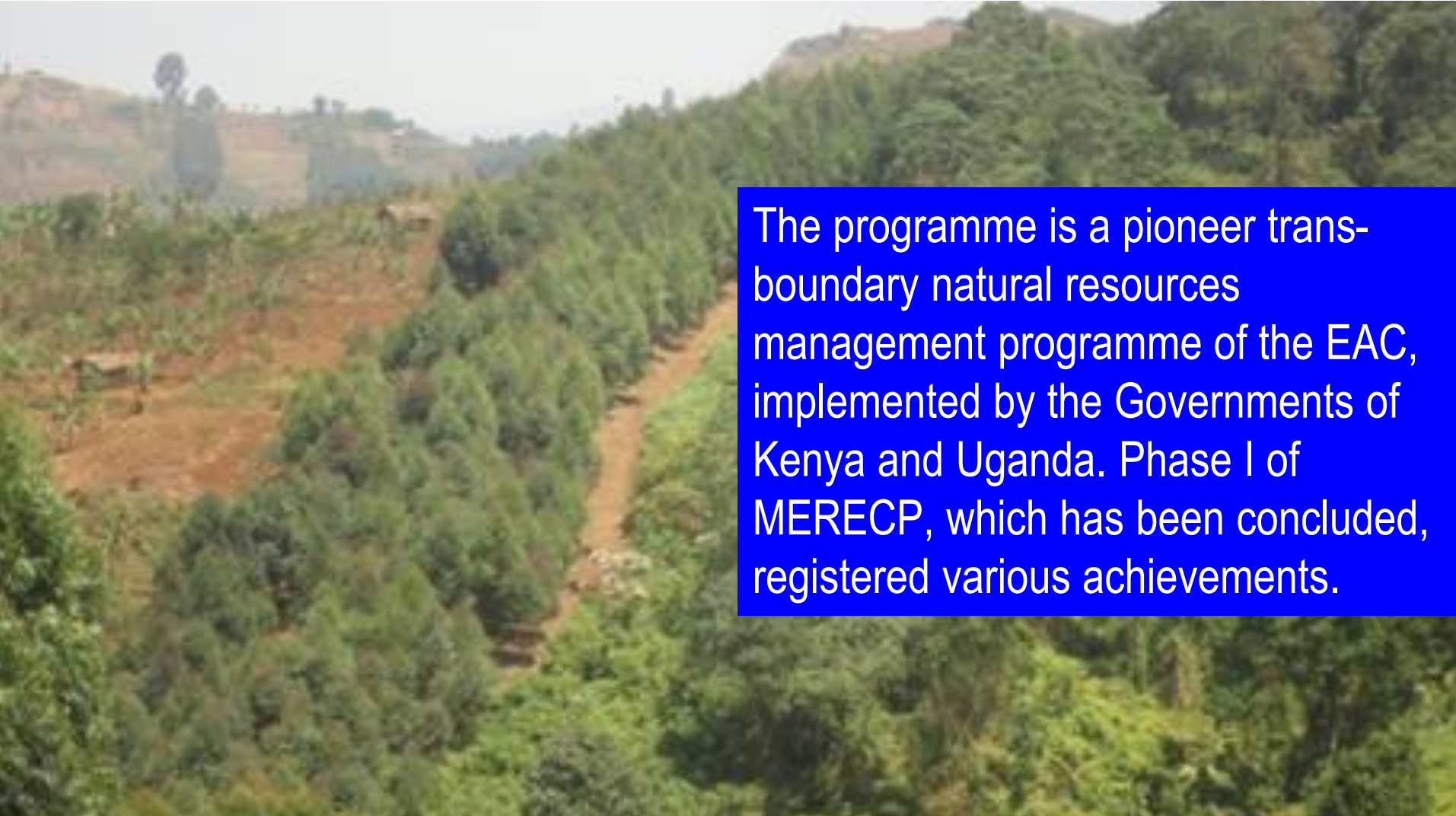


- (a) Rehab of wastewater treatment facilities for Point Sources Pollution Control and prevention
- (b) survey and mapping of marine transport routes in Lake Victoria;
- (c) installation of navigation equipment and facilities, such as light houses, lighted buoys, radar system, and
- (d) training on implementation of a contingency plan for the oil spills and hazardous wastes management in Lake Victoria.





MT ELGON ECOSYSTEM



The programme is a pioneer trans-boundary natural resources management programme of the EAC, implemented by the Governments of Kenya and Uganda. Phase I of MERECP, which has been concluded, registered various achievements.





INTERVENTIONS ON WATSAN





WATSAN INTERVENTIONS





TRANSBOUNDARY INFRASTRUCTURE



ISEBANIA



Pumping



Care taker House

Achievements of PHE



- Induction of LVBC staff on concept & practice of Integrating PHE in development programming
- Constitution of PHE RTWG and induction on PHE concept and practice
- integrated PHE induction meeting for members of EALA and national parliamentary committees on health and environment
- Establishment of a regional parliamentary dialogue forum for PHE and country parliamentary chapters on PHE



FARM LEVEL INTERVENTIONS IN MT ELGON



**EAST AFRICAN COMMUNITY
LAKE VICTORIA BASIN COMMISSION SECRETARIAT
3rd Lake Victoria Basin Donors' Conference
Date: 17th - 18th June 2013
Venue: Protea Hotel, Entebbe, Uganda**



- **Forty (40) representatives of development partners and some potential investors attended the conference.**
- **22 project concepts were presented and**
- **16 firm interests were expressed by 13 Development Partners**



Thank You