

# ESSAY & ARTS CONTEST ON THE TOPIC OF CORRUPTION



**KONRAD  
ADENAUER  
STIFTUNG**

**Rule of Law Program for  
Sub-Saharan Africa**

---

**Entry categories are:**

---

Essay | Artwork (or cartoon)

---

**Your submission should  
contain:**

- your name
- your birthday and year of birth
- your school
- your contact details  
(e-mail/phone number and  
postal address)

---

**DEADLINE: 31 MAY 2021**

---

**Eligibility:**

- Open to children and youth  
between ages 10 and 18.
- Essays should be between  
1000 and 2000 words (in  
English language, typed or if  
handwritten then scanned).
- Artwork to be submitted  
either on paper size A4, A5 or  
A6.

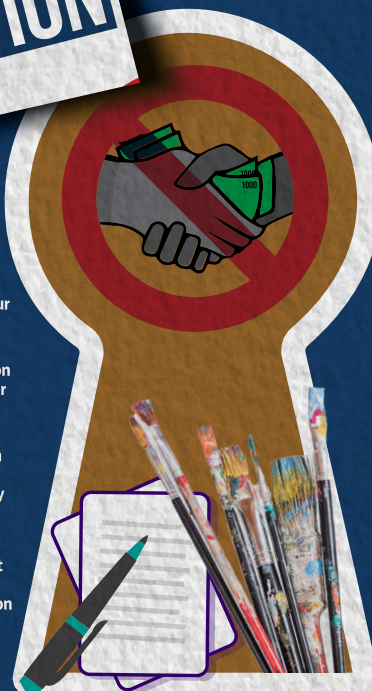
---

**Send entries to:**  
essayartcon@fawe.or.ke

or  
**FORUM FOR AFRICAN WOMEN  
EDUCATIONALISTS**  
Kenya Chapter (FAWEK) P.O. Box  
52597-00200 Nairobi, Kenya.

---

<https://fawe.or.ke>  
<https://www.kas.de/en/web/rspssa>



Dear Children and Youth of Kenya,

You are cordially invited to participate in our Essay and Arts Contest on a topic of utmost relevance and importance for your country.

Please share with us your personal story and your understanding of / experience on the issue of **CORRUPTION** and how in your opinion it should be dealt with.

Send us your essay OR submit a piece of art / a cartoon on the issue of Corruption in one of the following key areas:  
Education, Health, the Economy, Security or the Environment.

Be creative and have your say on one of the most pressing problems and greatest threats to democracy, the rule of law and the well-being and prosperity of society on the continent.

Make a difference by participating!  
The best submissions will be published and there are prizes to win.

We are looking forward to your contributions!

*All entries become property of FAWE Kenya and KAS and may be used in the furtherance of the fight against corruption. Only shortlisted participants will be contacted. Reach out to FAWE if you need support in using a courier service for your artwork or for handwritten essays, in case scanning is not possible.*