



# Media INDEX

MEDIA MONITORING

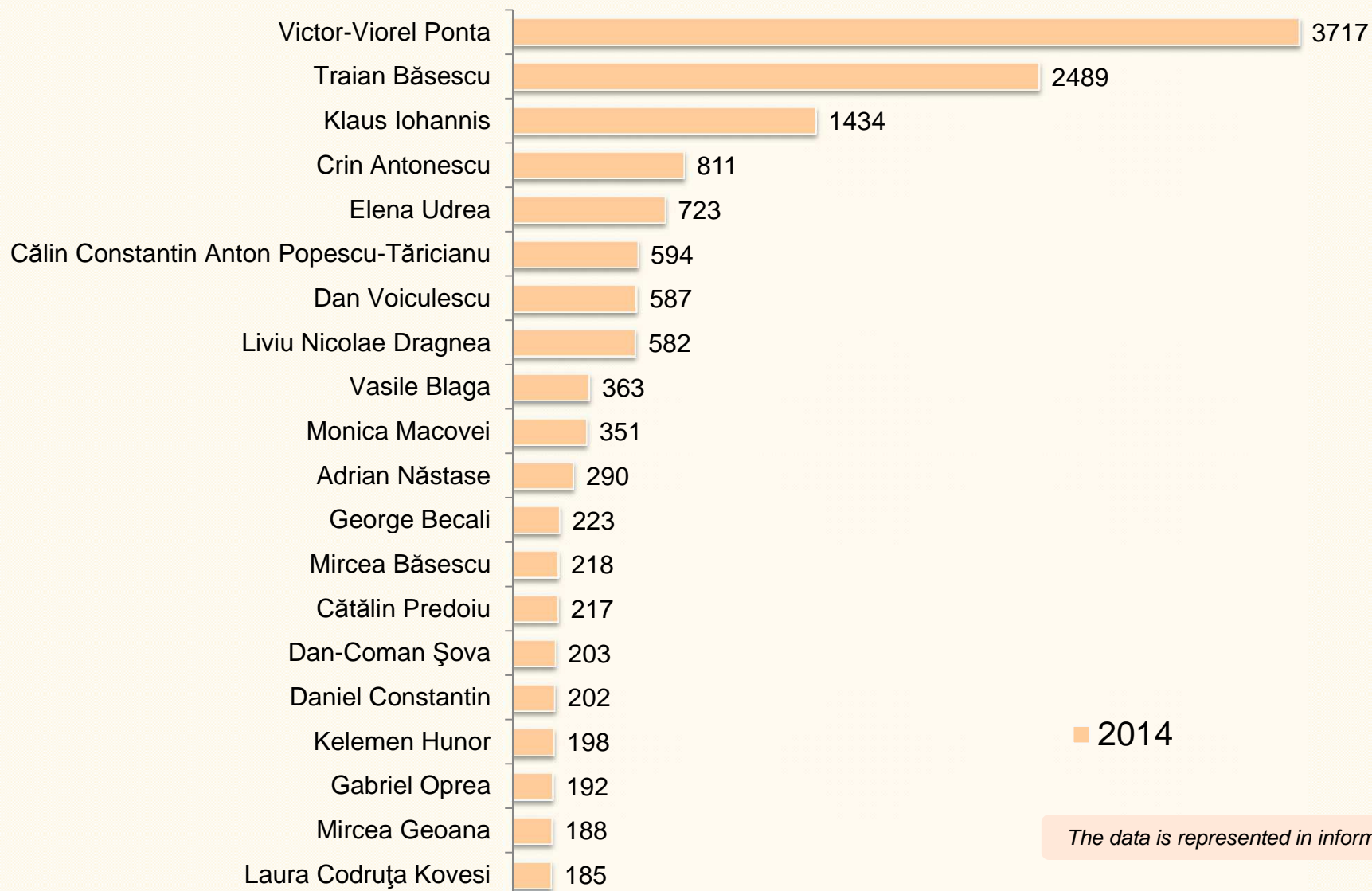
GRAPHIC REPORT JANUARY – DECEMBER 2014

m a r k e t  
**LINKS**

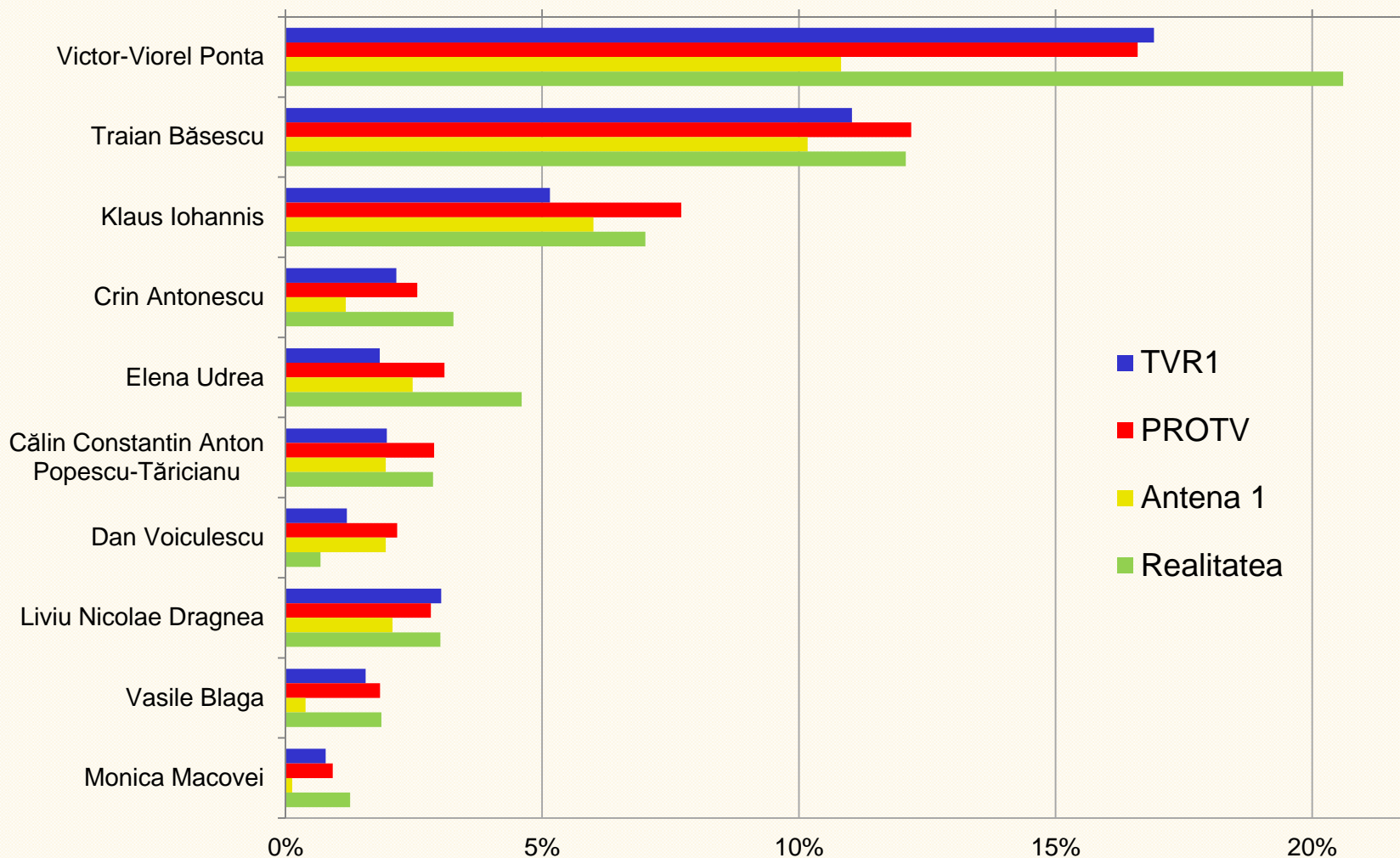
 Konrad  
Adenauer  
Stiftung

<b>PERIOD</b>	1 January – 31 December 2014
<b>MONITORED MEDIA</b>	8
<b>TV Stations</b>	News broadcasts of Antena 1, PROTV, Realitatea, TVR1
<b>Newspapers</b>	Adevărul, Evenimentul Zilei, Jurnalul Național, România Liberă
<b>PUBLICATIONS SELECTION</b>	All publications related to political topics, such as state institutions, political parties and political leaders
<b>NUMBER OF ANALYZED PUBLICATIONS</b>	12'393
<b>MAIN INDICATORS</b>	Date of the publication, month, media, mentioned institutions, political parties, leaders, subject (who has expressed the opinion) and object (to whom the opinion has been expressed)

## MOST MENTIONED POLITICIANS

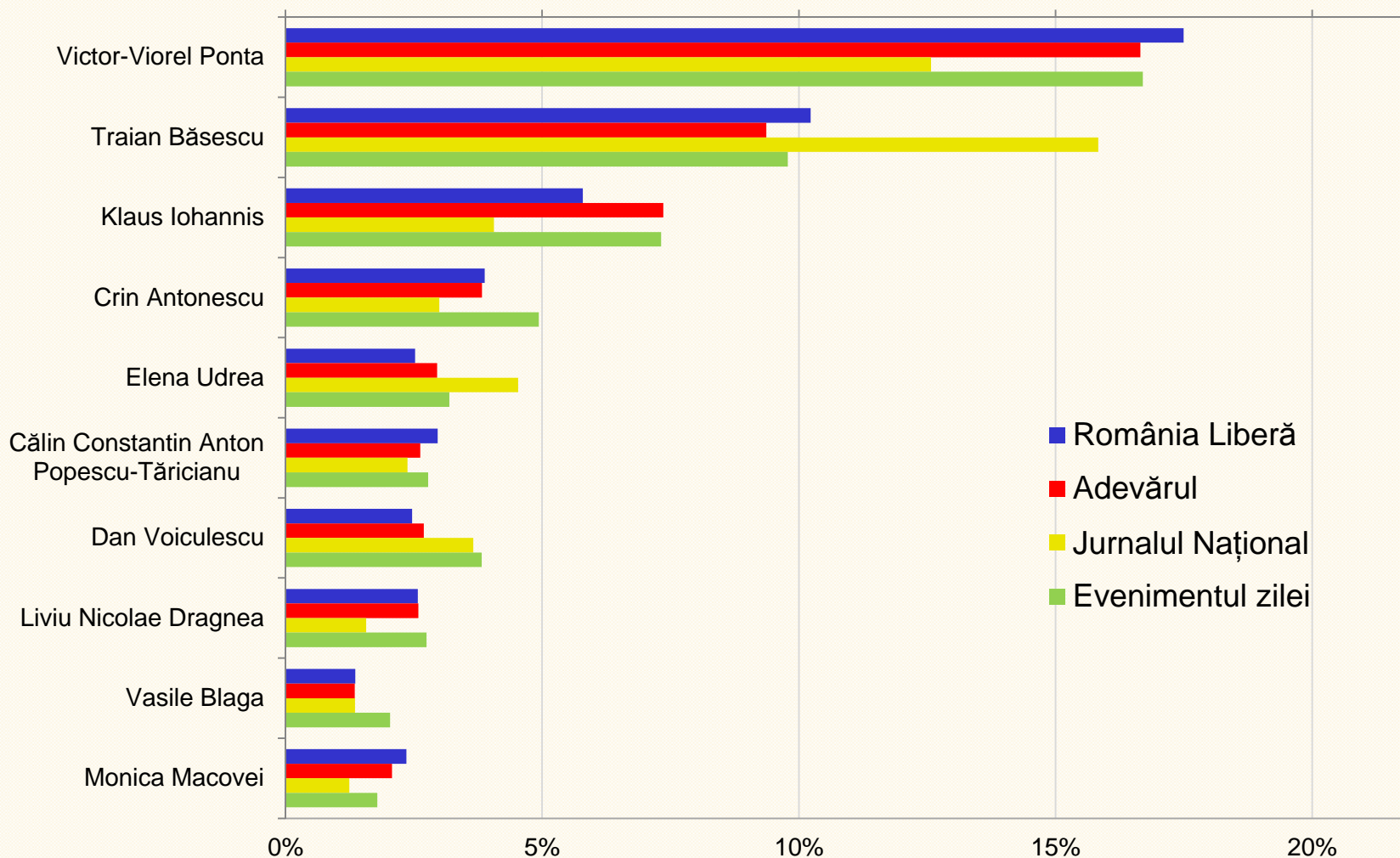


# MOST MENTIONED POLITICIANS as % of publications in the respective media



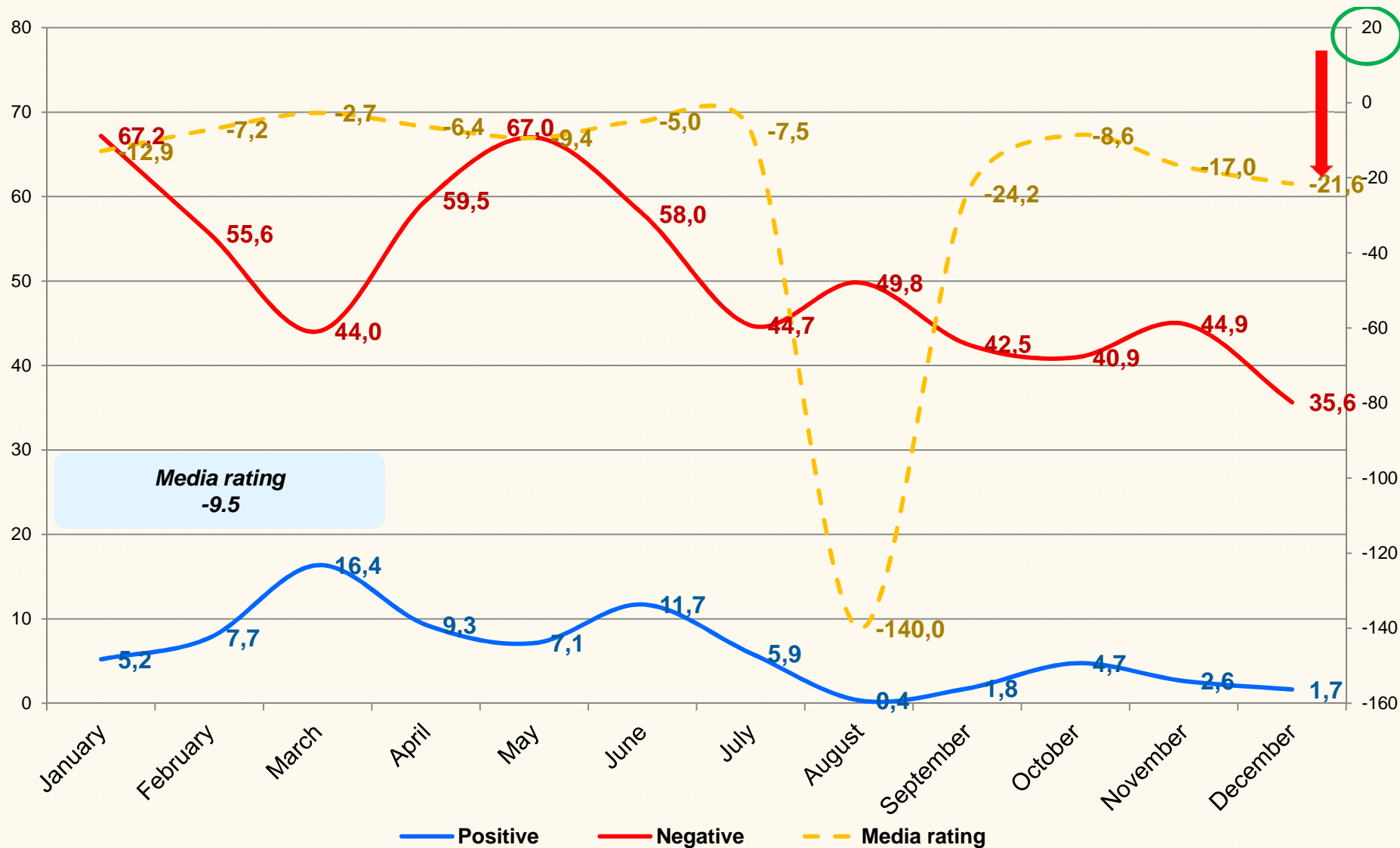
Monitoring period January – December 2014

# MOST MENTIONED POLITICIANS as % of publications in the respective media

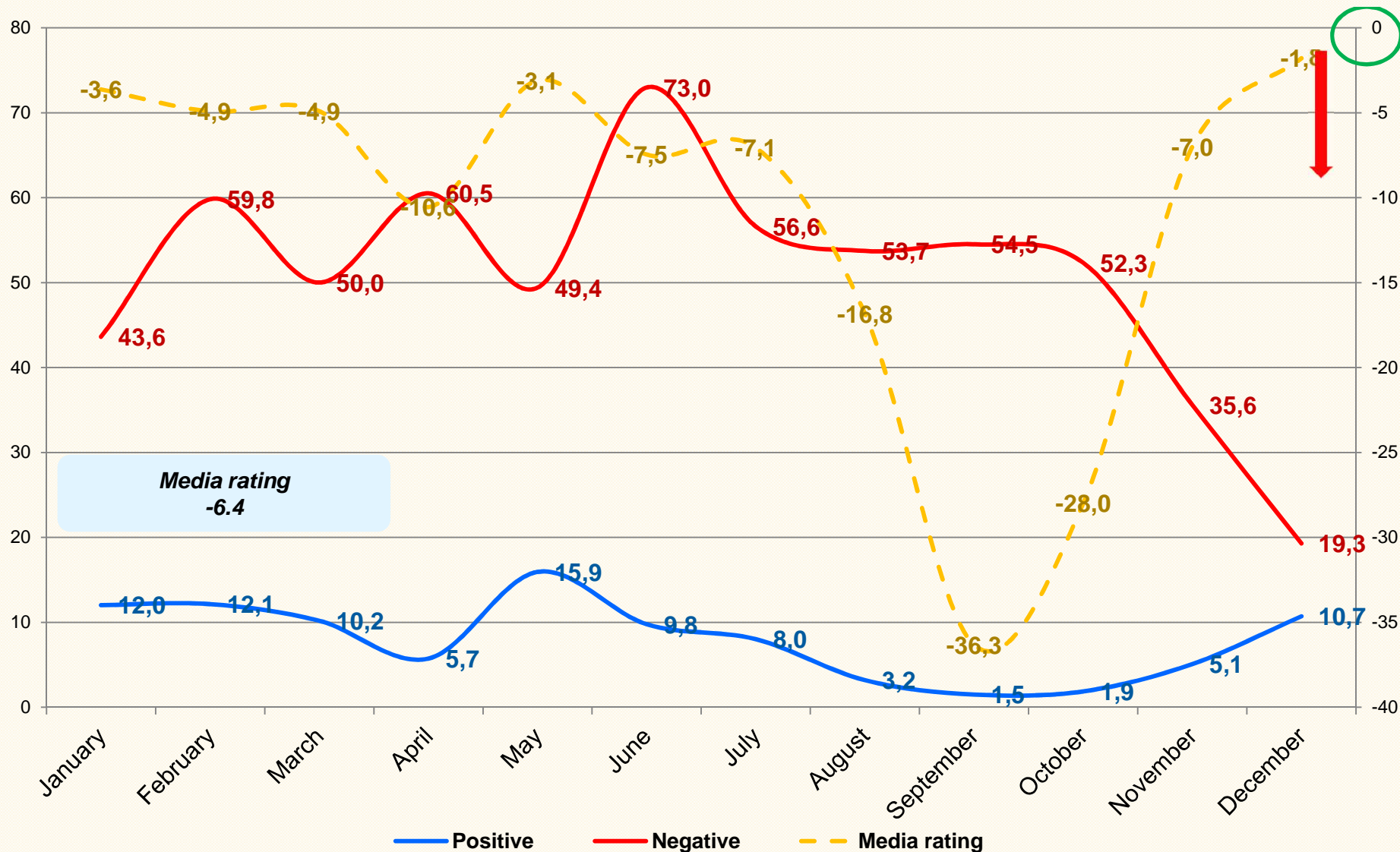


Monitoring period January – December 2014

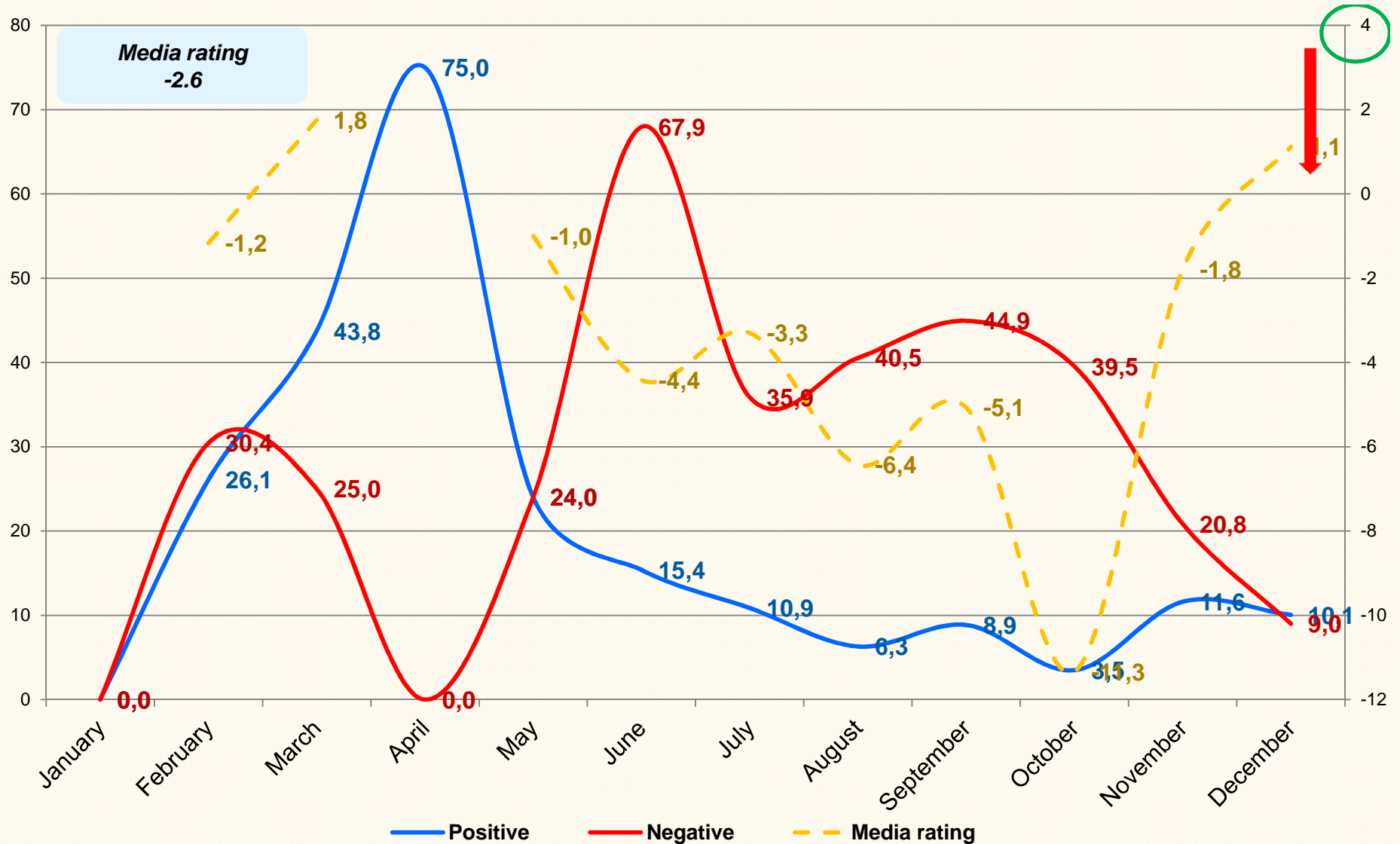
# EXPRESSED ATTITUDES TOWARDS VICTOR-VIOREL PONTA



# EXPRESSED ATTITUDES TOWARDS TRAIAN BĂSESCU

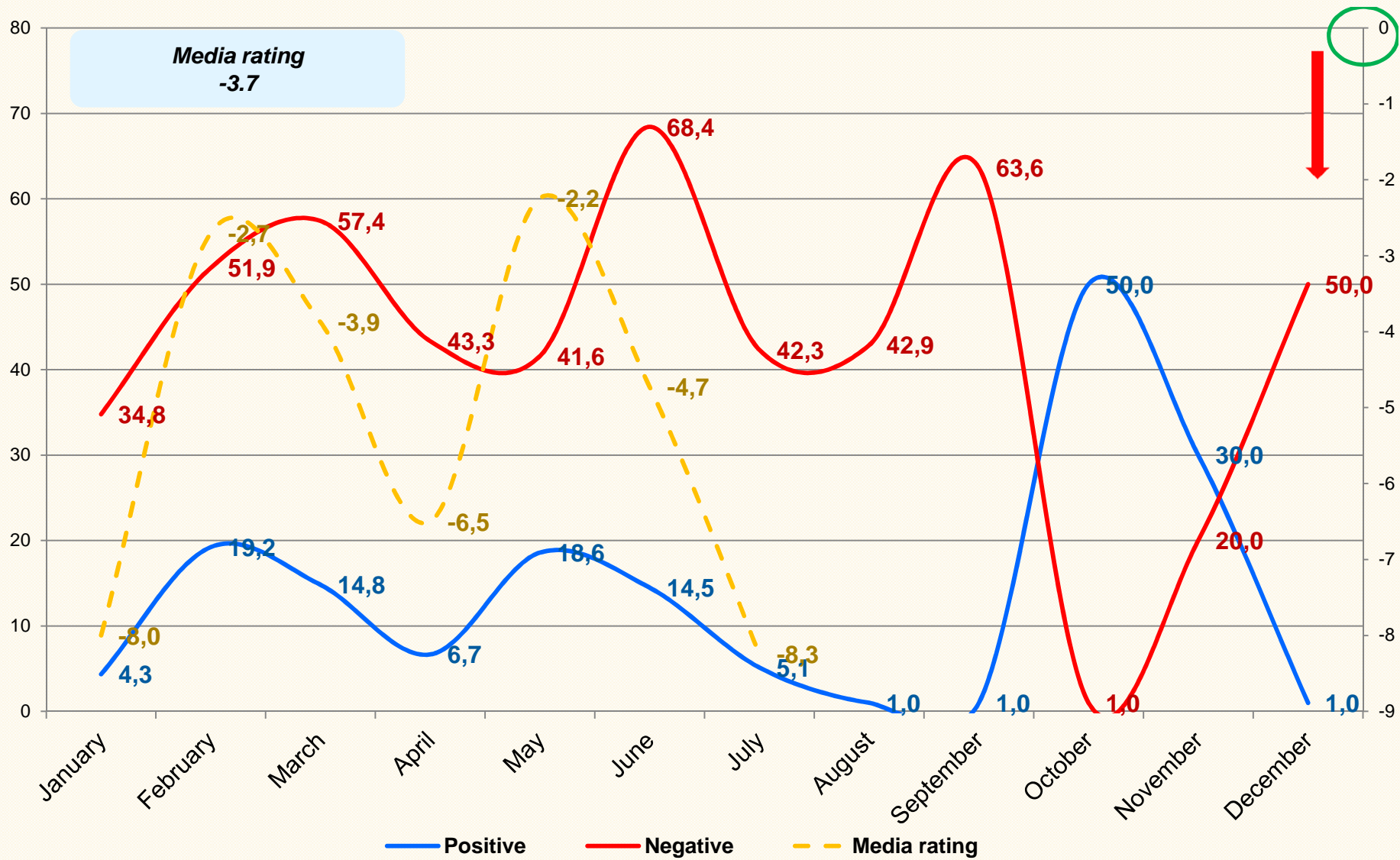


# EXPRESSED ATTITUDES TOWARDS KLAUS IOHANNIS

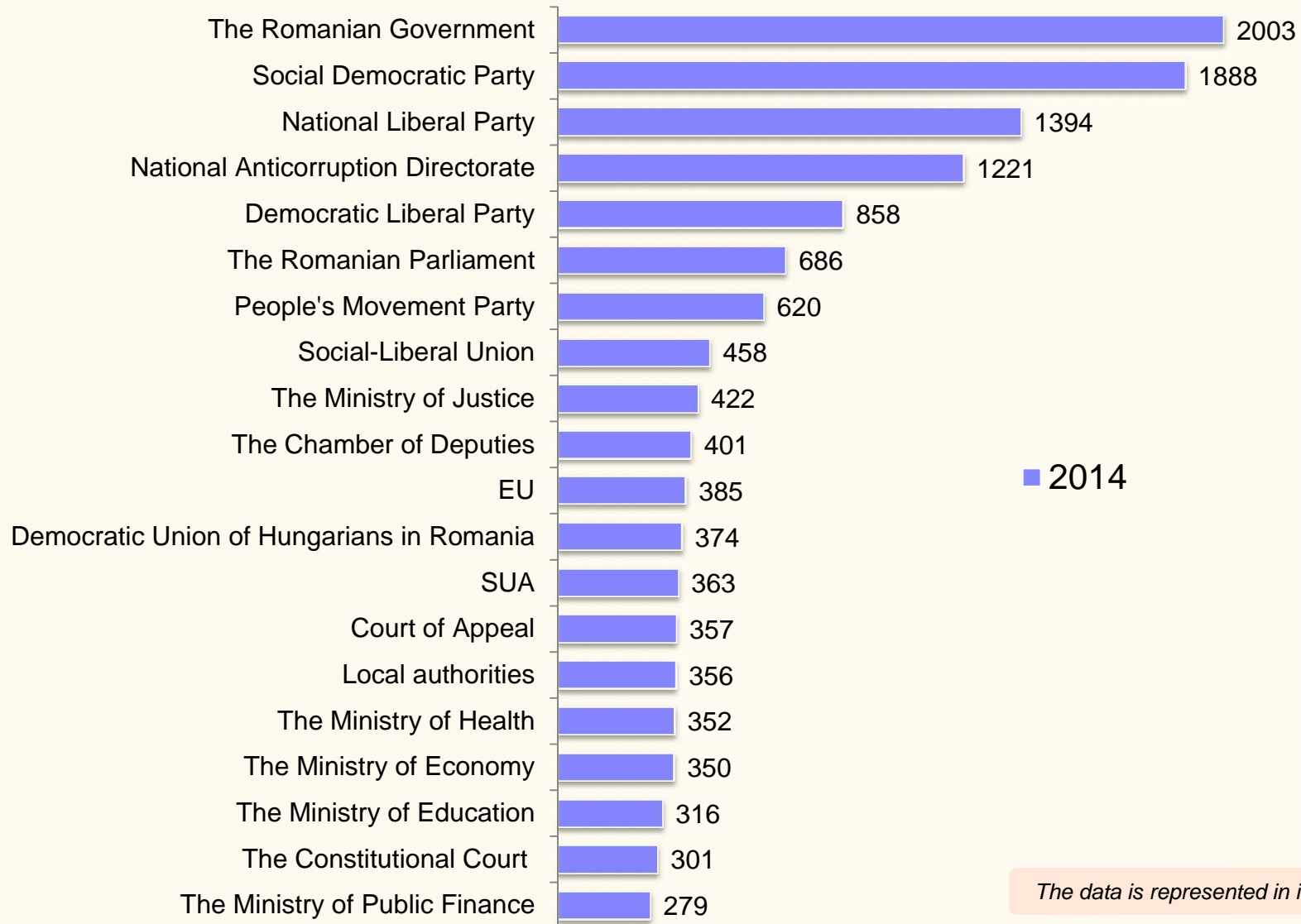




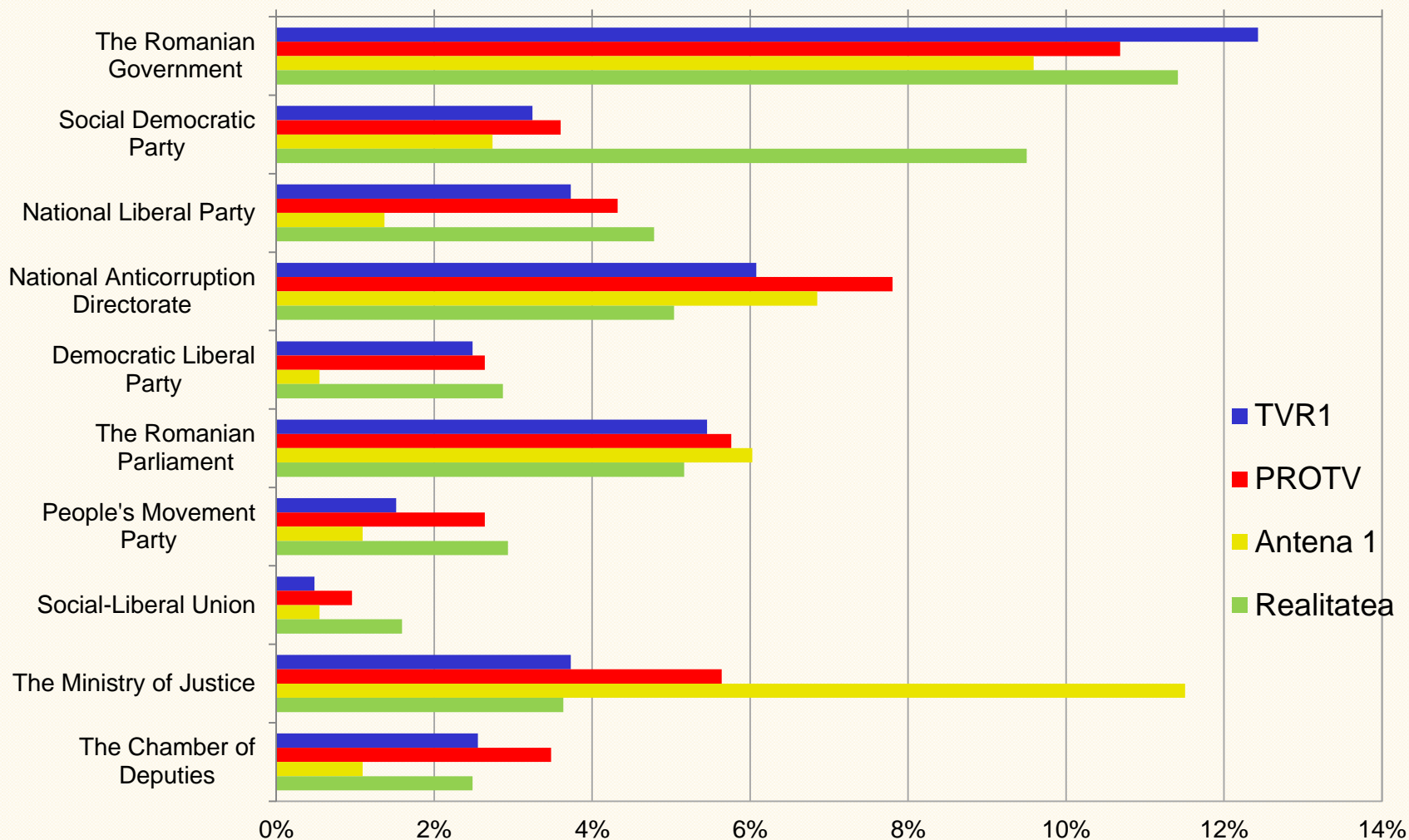
# EXPRESSED ATTITUDES TOWARDS CRIN ANTONESCU



## MOST MENTIONED INSTITUTIONS/PARTIES

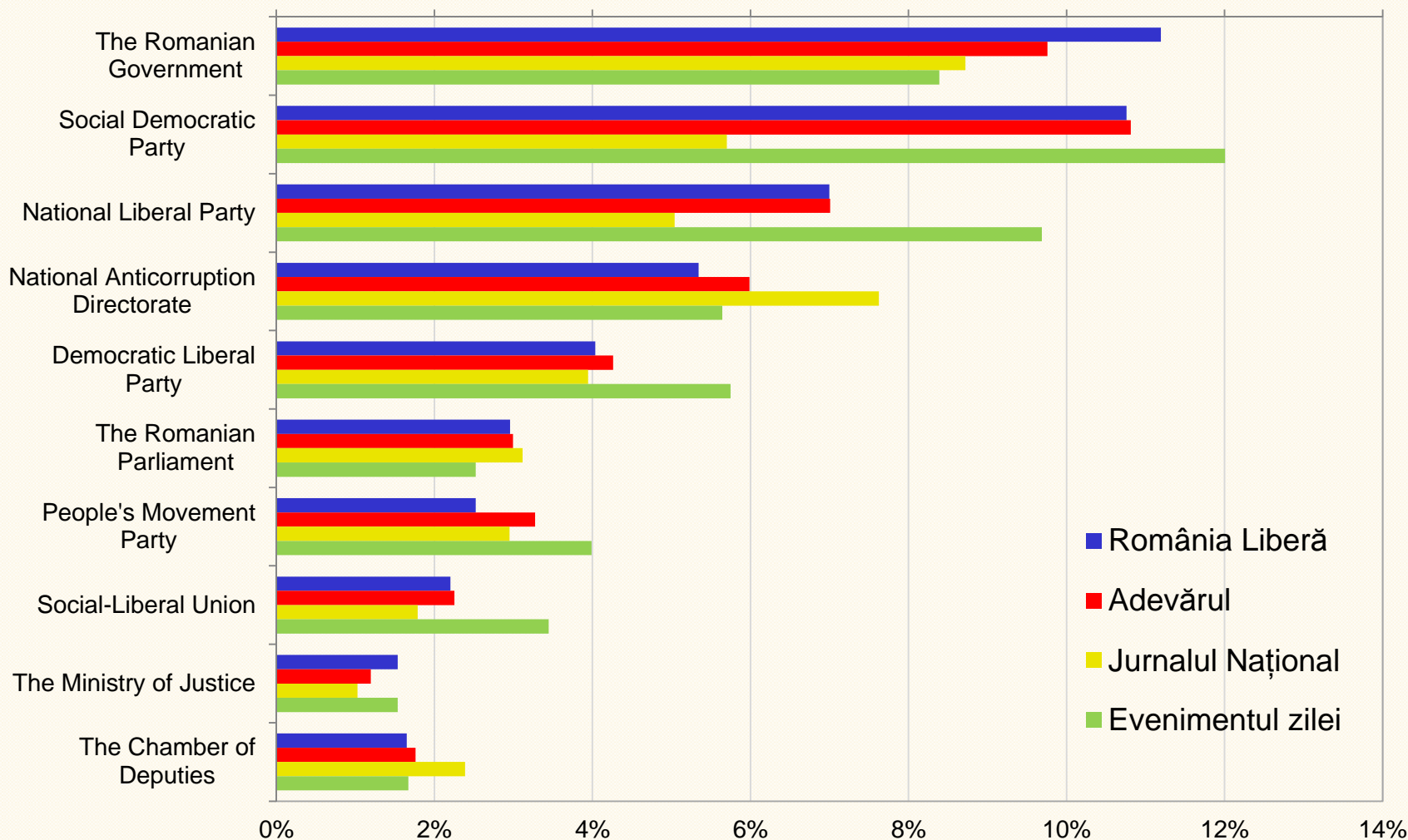


# MOST MENTIONED INSTITUTIONS/PARTIES as % of publications in the respective media



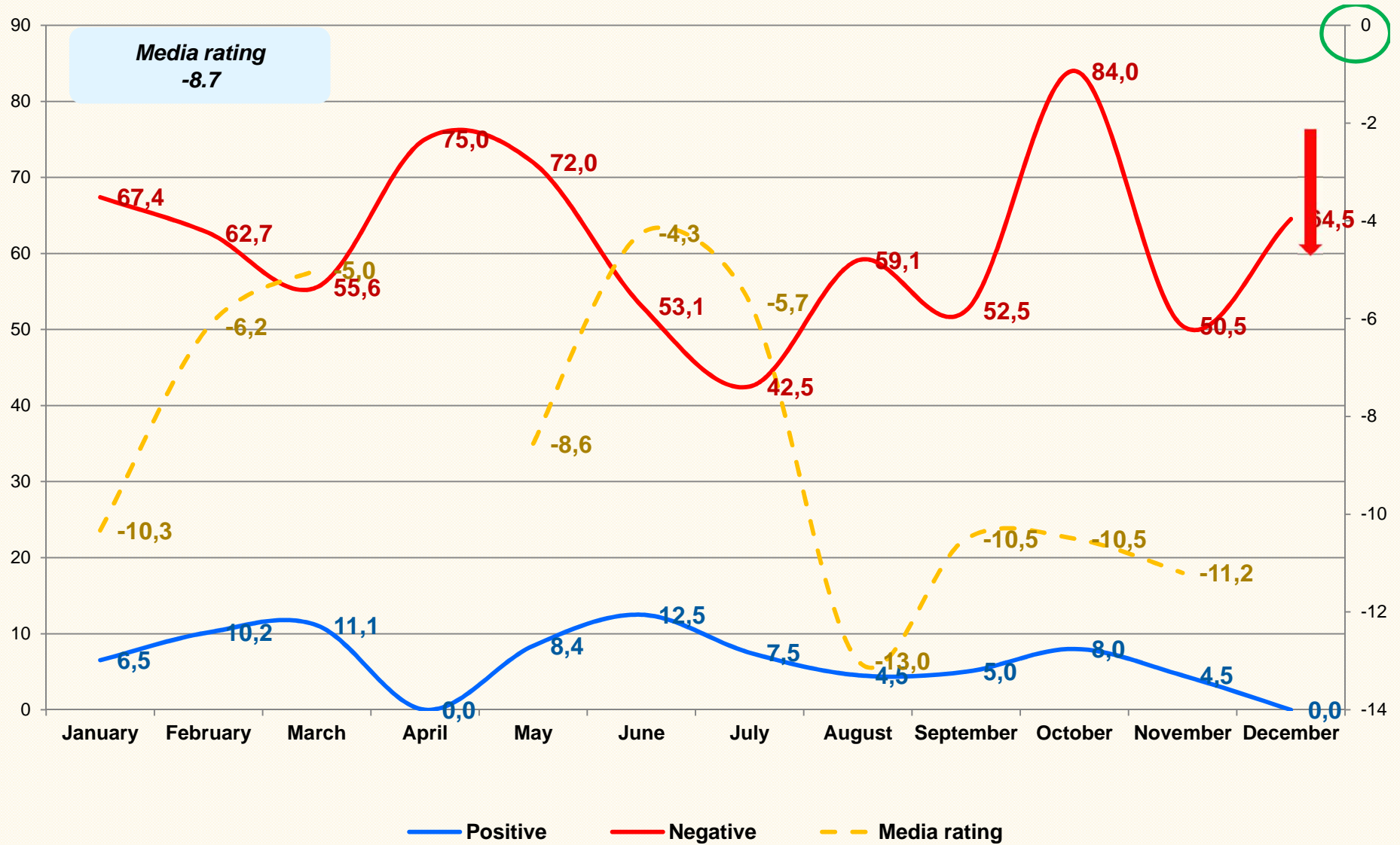
Monitoring period January – December 2014

# MOST MENTIONED INSTITUTIONS/PARTIES as a % of publications in the respective media

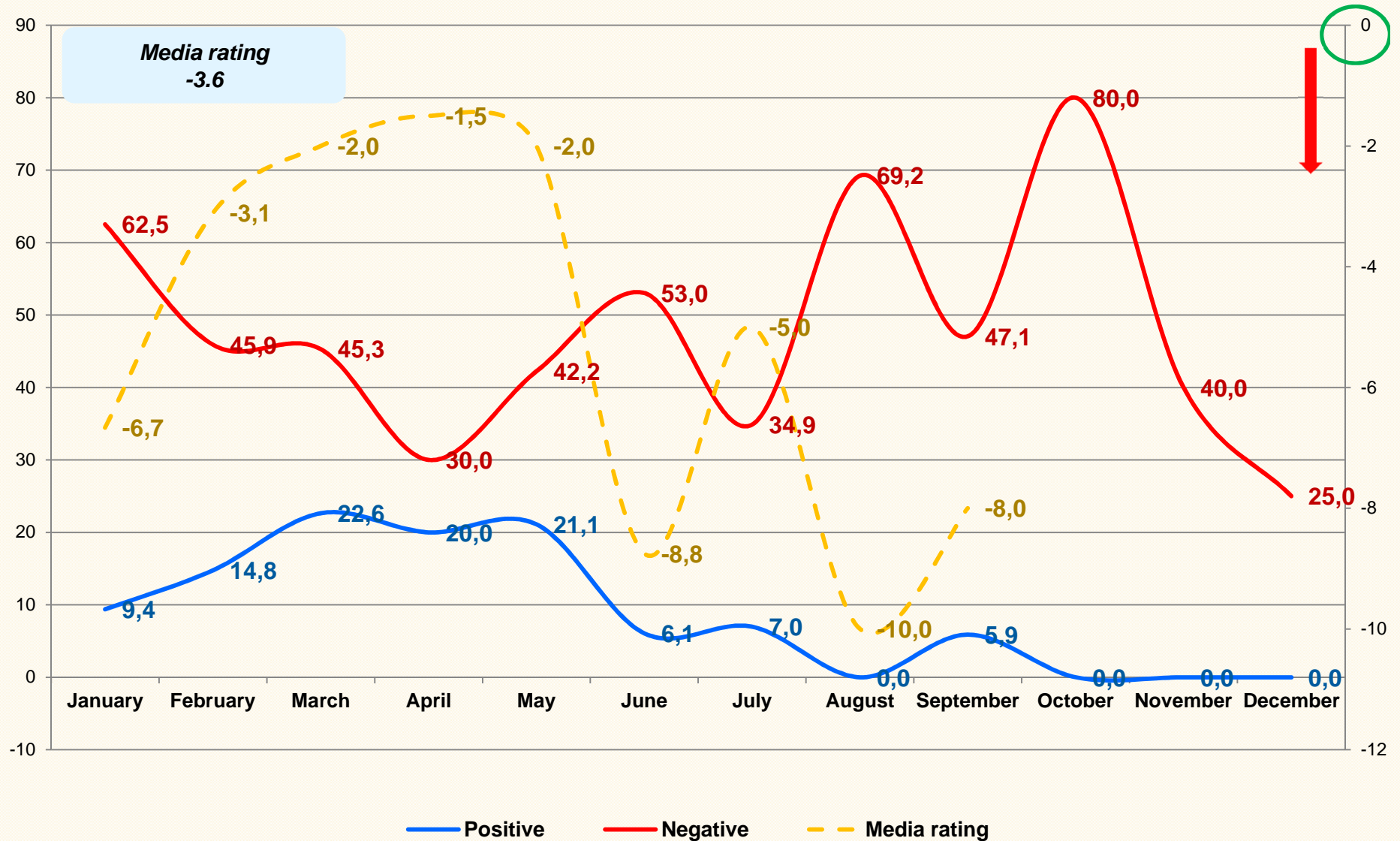


Monitoring period January – December 2014

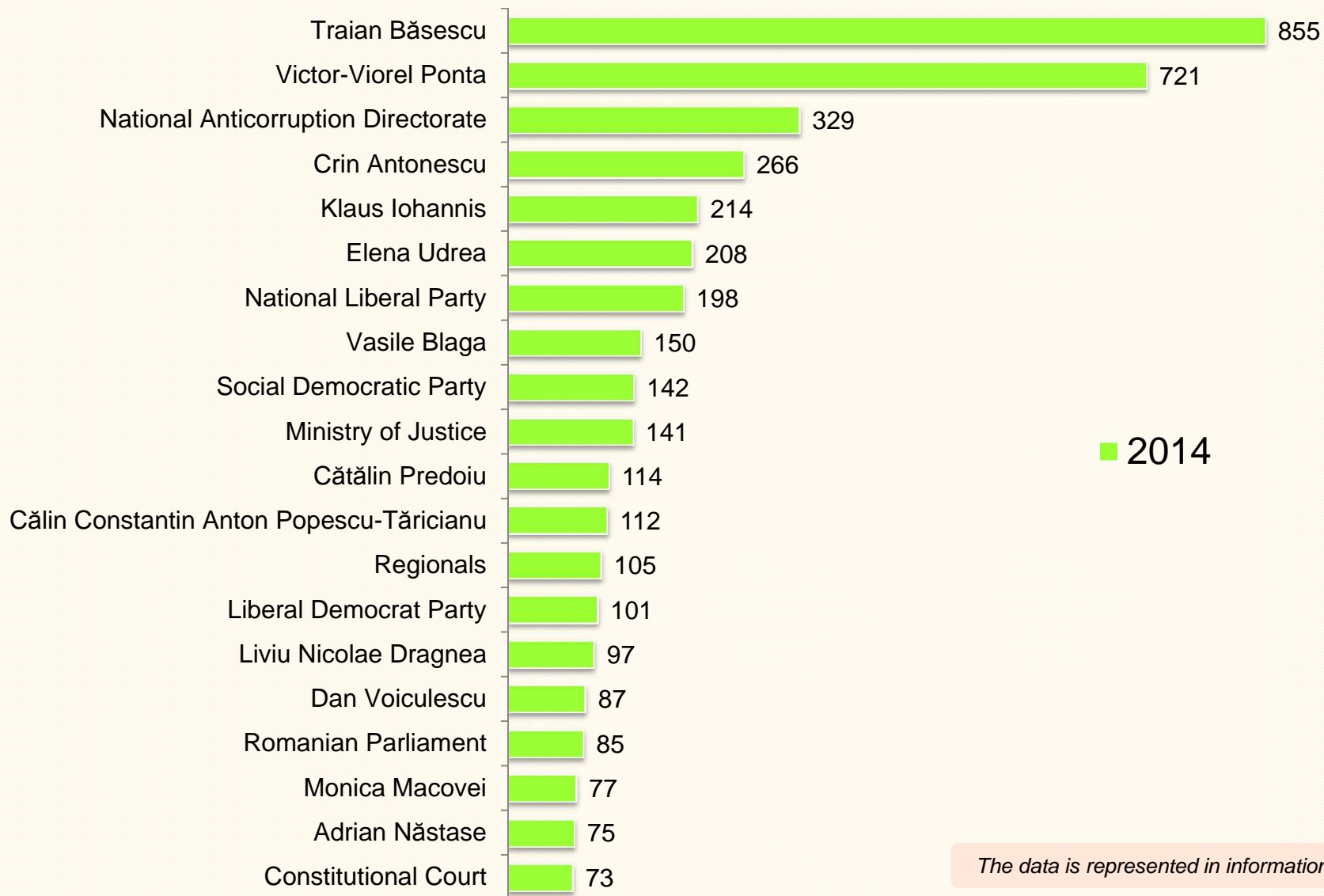
# EXPRESSED ATTITUDES TOWARDS Social Democratic Party



# EXPRESSED ATTITUDES TOWARDS National Liberal Party



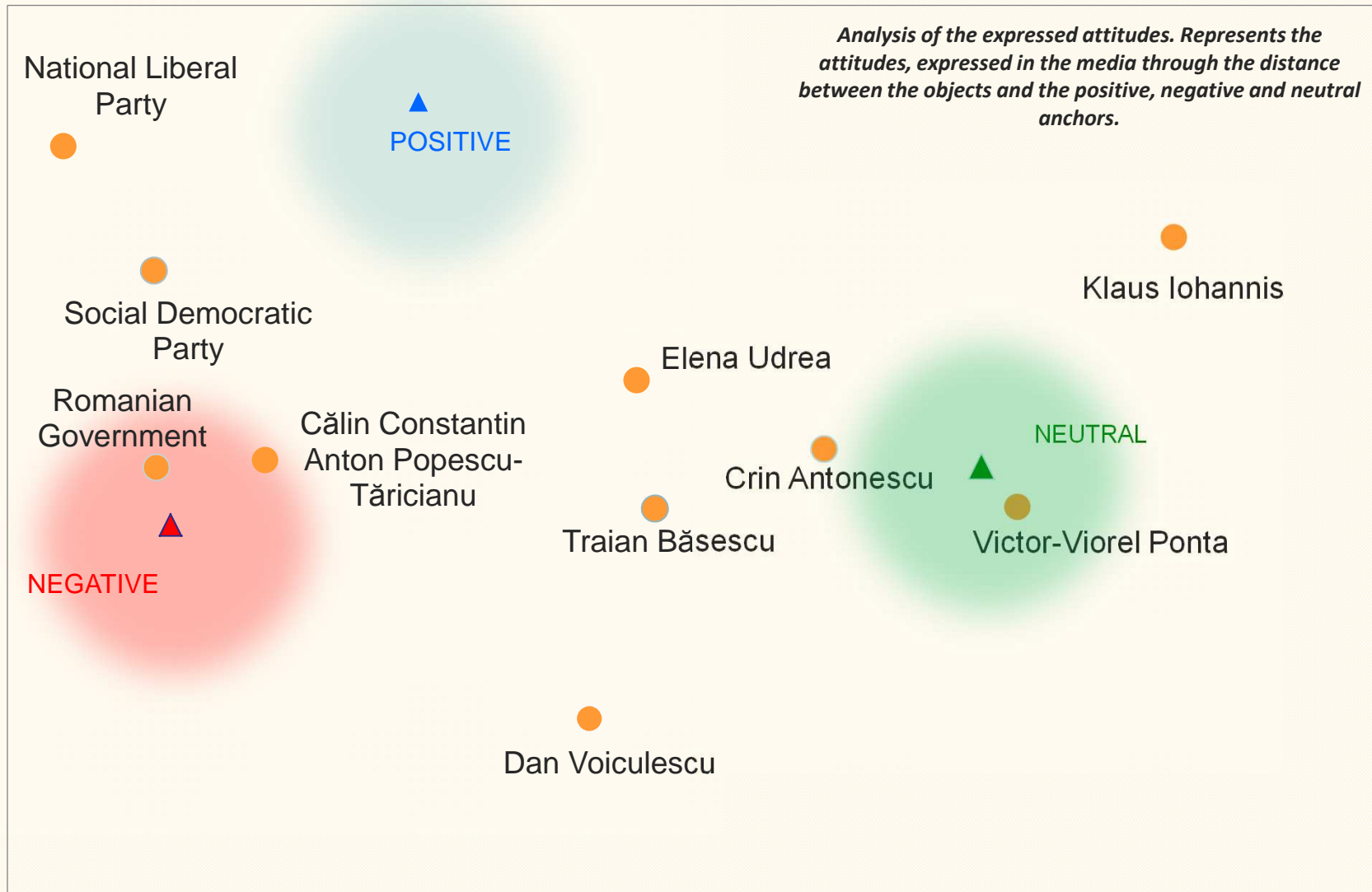
## MENTIONED SUBJECTS



# EXPRESSED ATTITUDES TOWARDS MENTIONED OBJECTS



TVR1

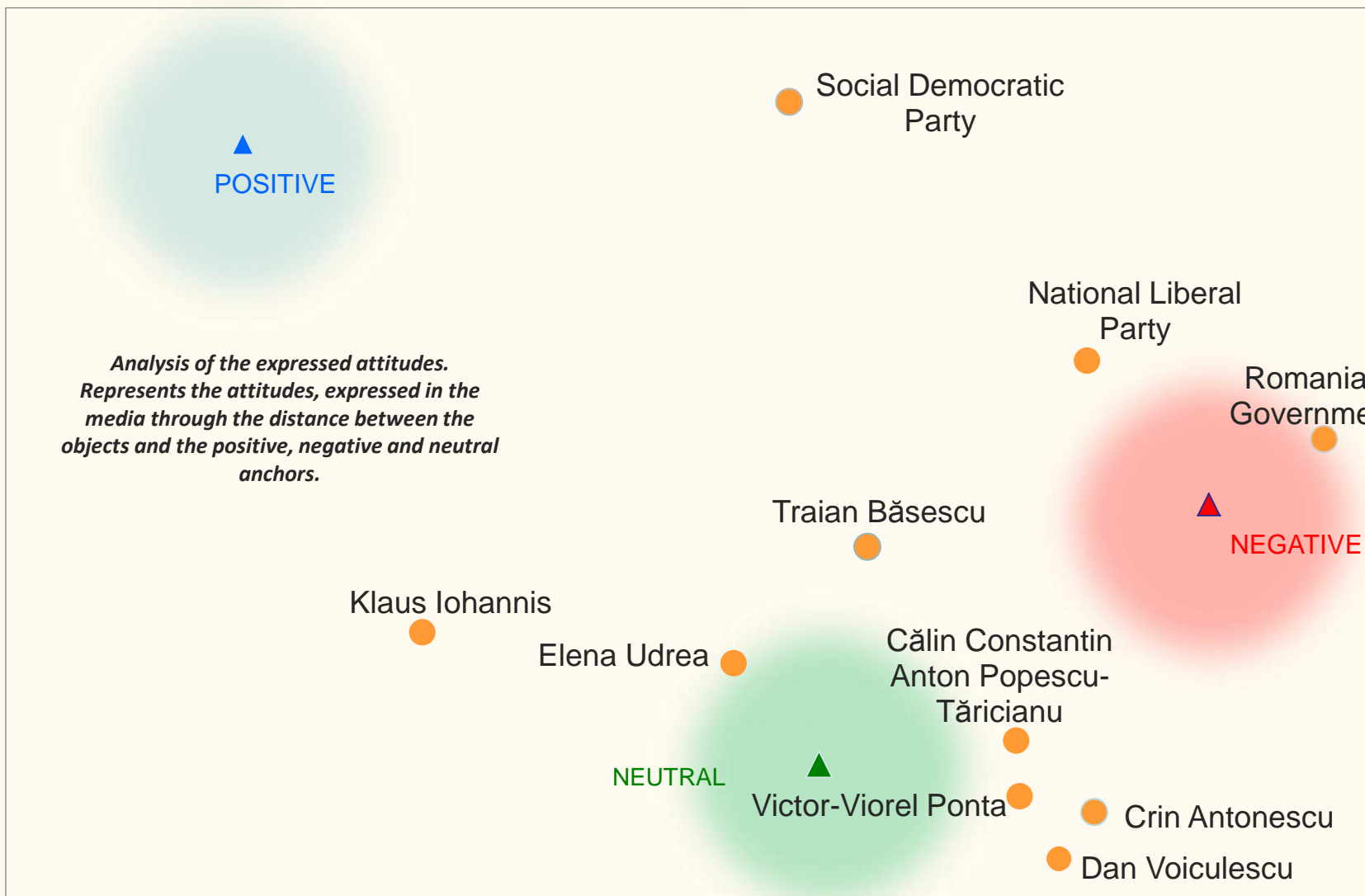




# EXPRESSED ATTITUDES TOWARDS MENTIONED OBJECTS



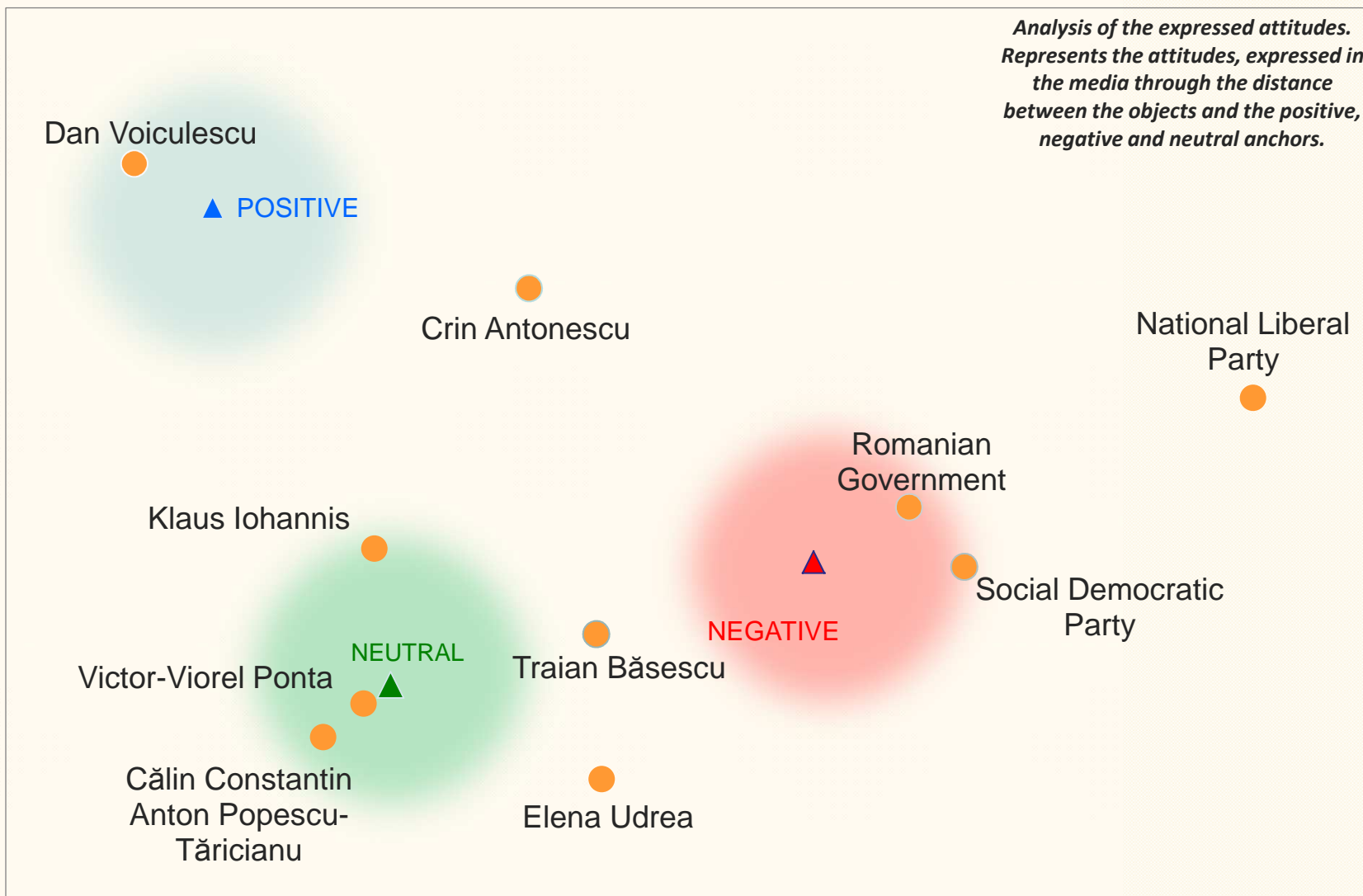
PROTV



# EXPRESSED ATTITUDES TOWARDS MENTIONED OBJECTS



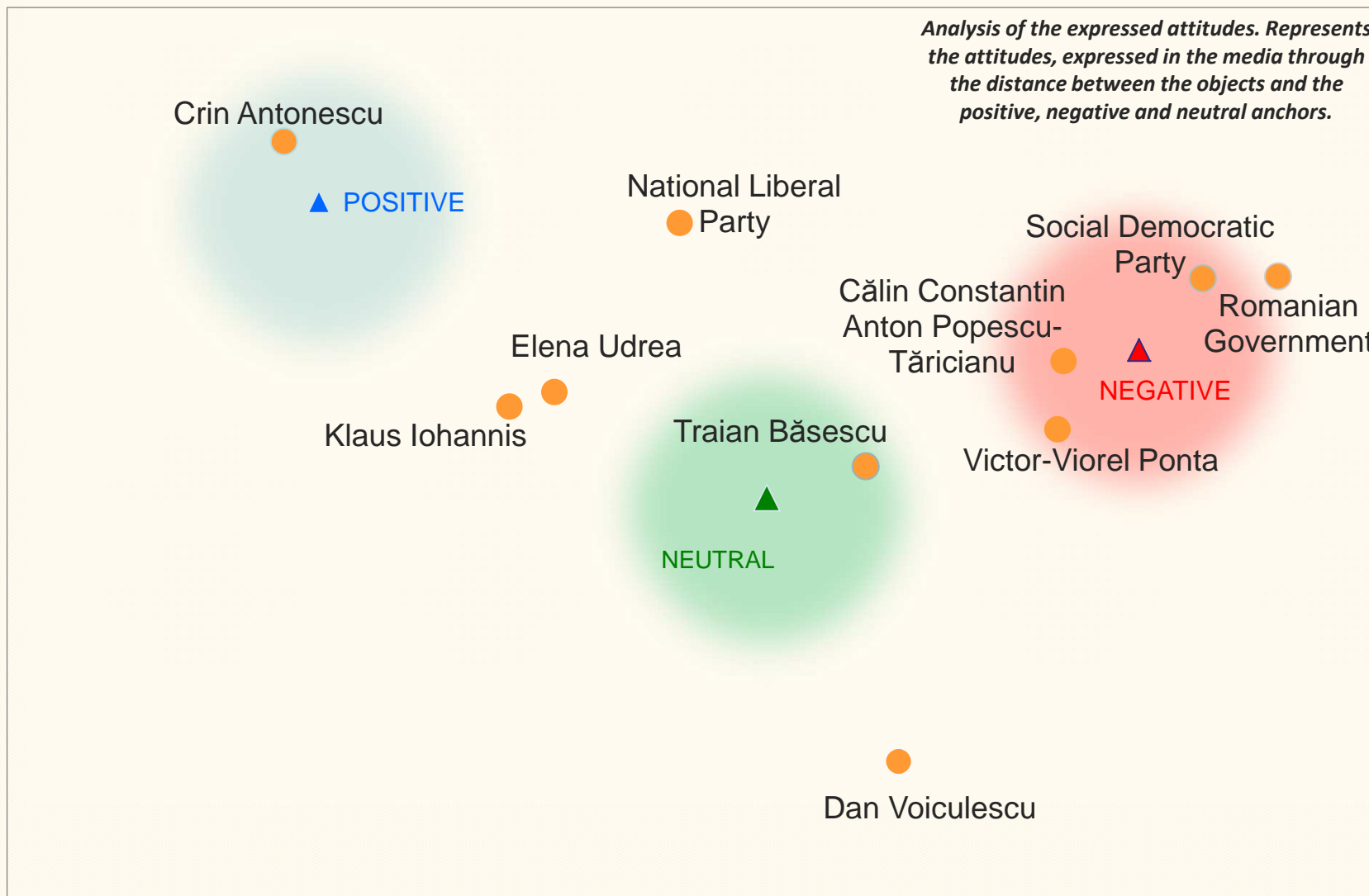
ANTENA 1



# EXPRESSED ATTITUDES TOWARDS MENTIONED OBJECTS



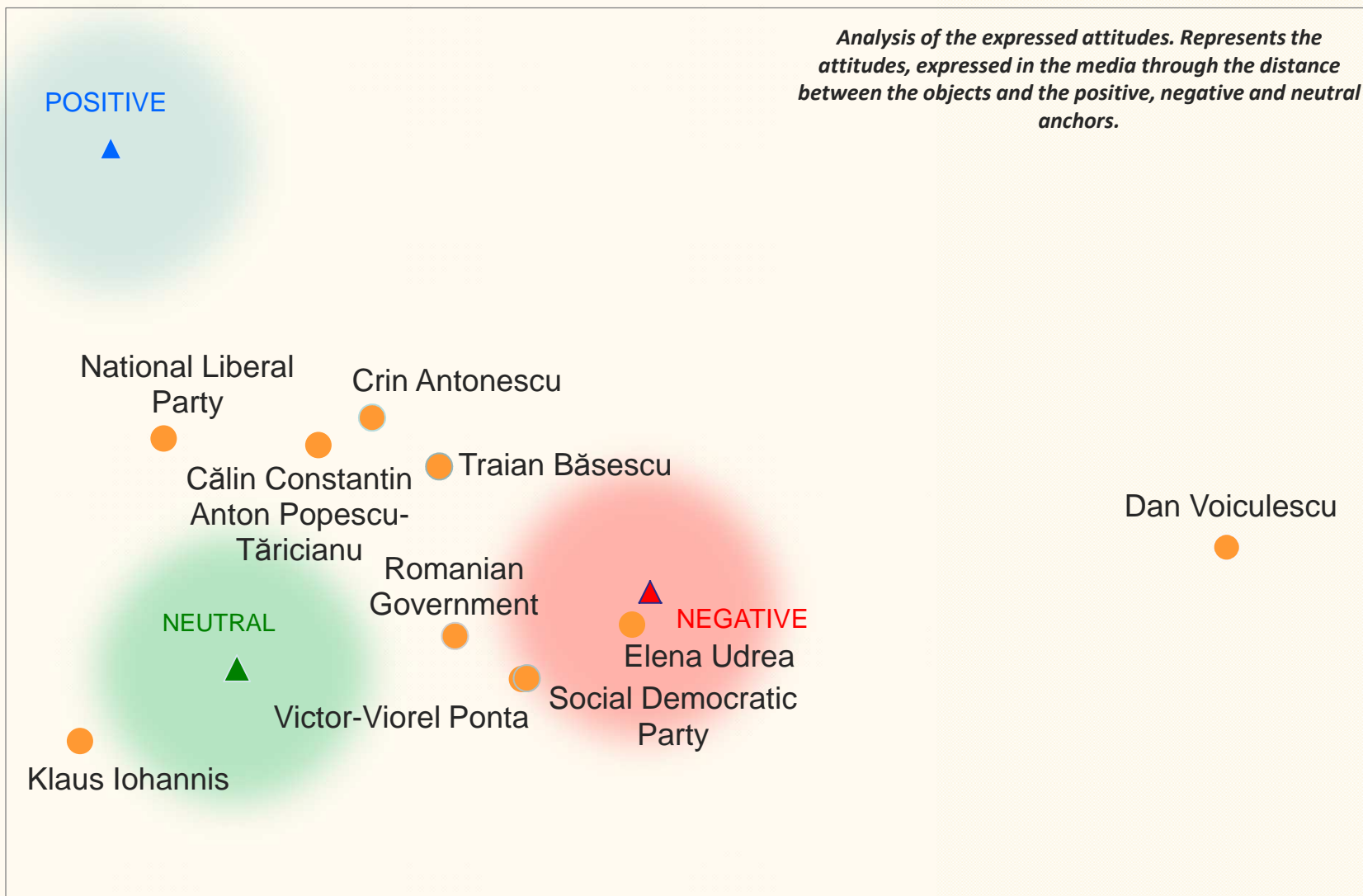
REALITATEA



# EXPRESSED ATTITUDES TOWARDS MENTIONED OBJECTS



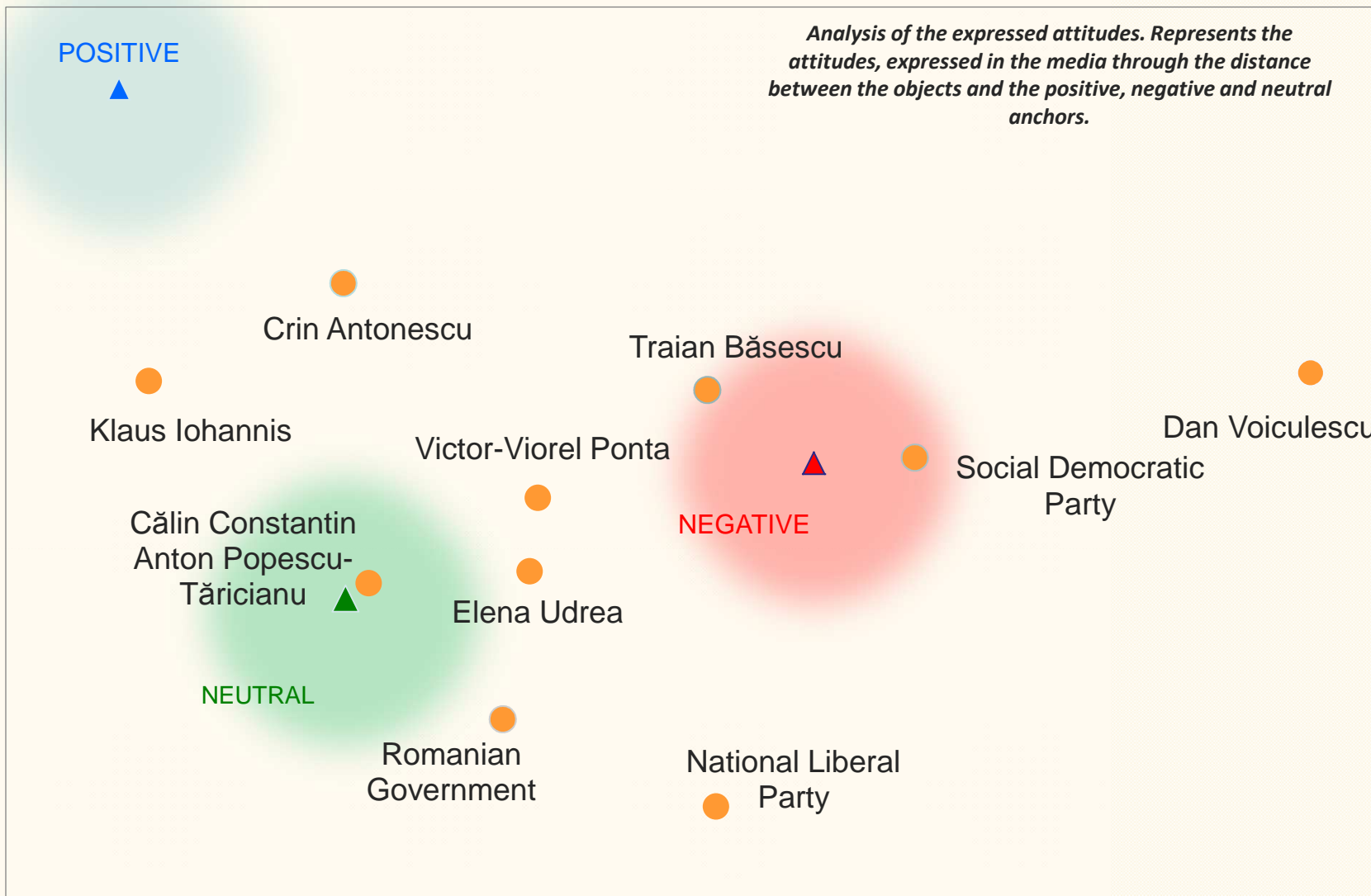
## ROMÂNIA LIBERĂ



# EXPRESSED ATTITUDES TOWARDS MENTIONED OBJECTS



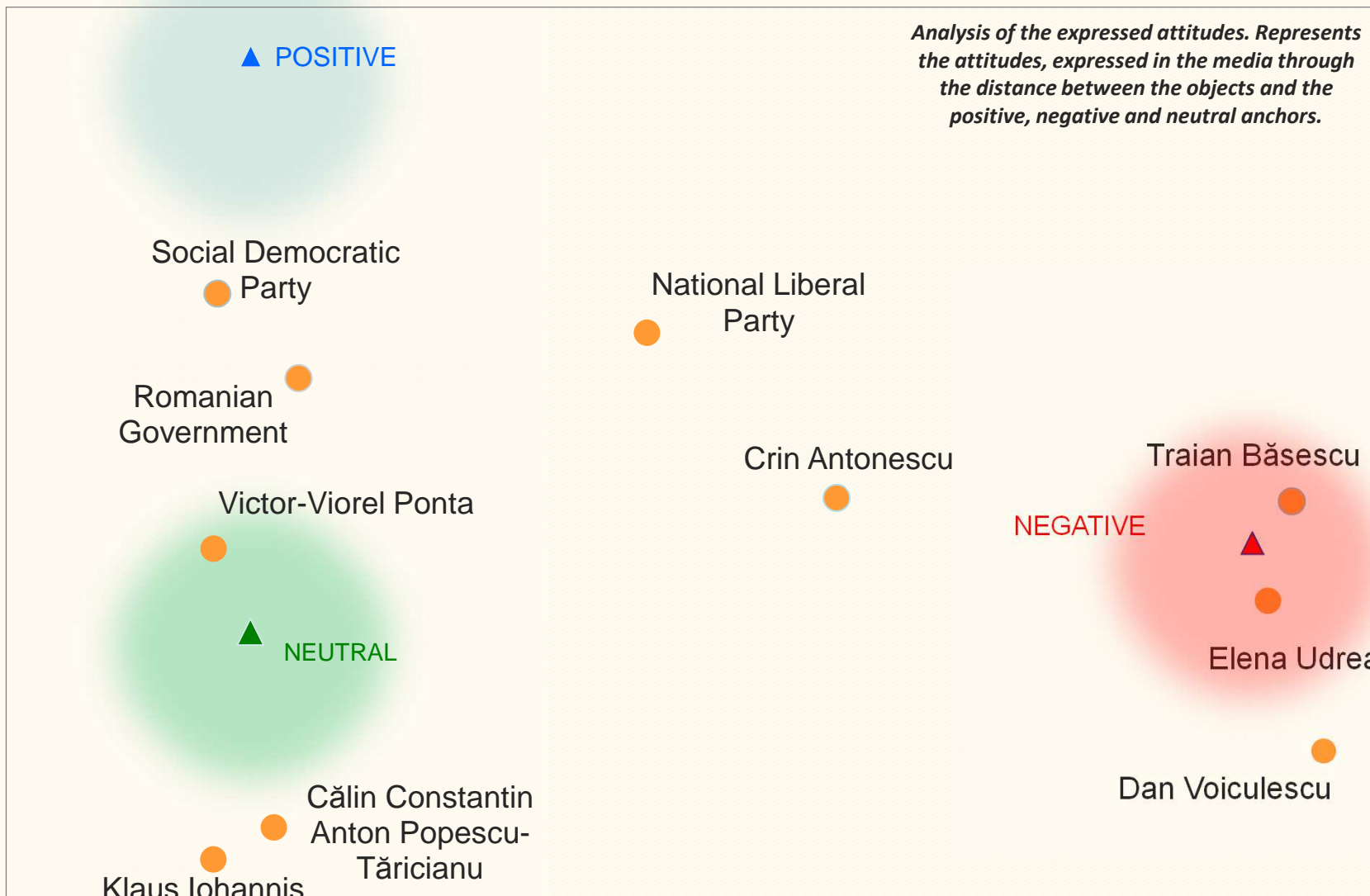
## ADEVĂRUL



# EXPRESSED ATTITUDES TOWARDS MENTIONED OBJECTS



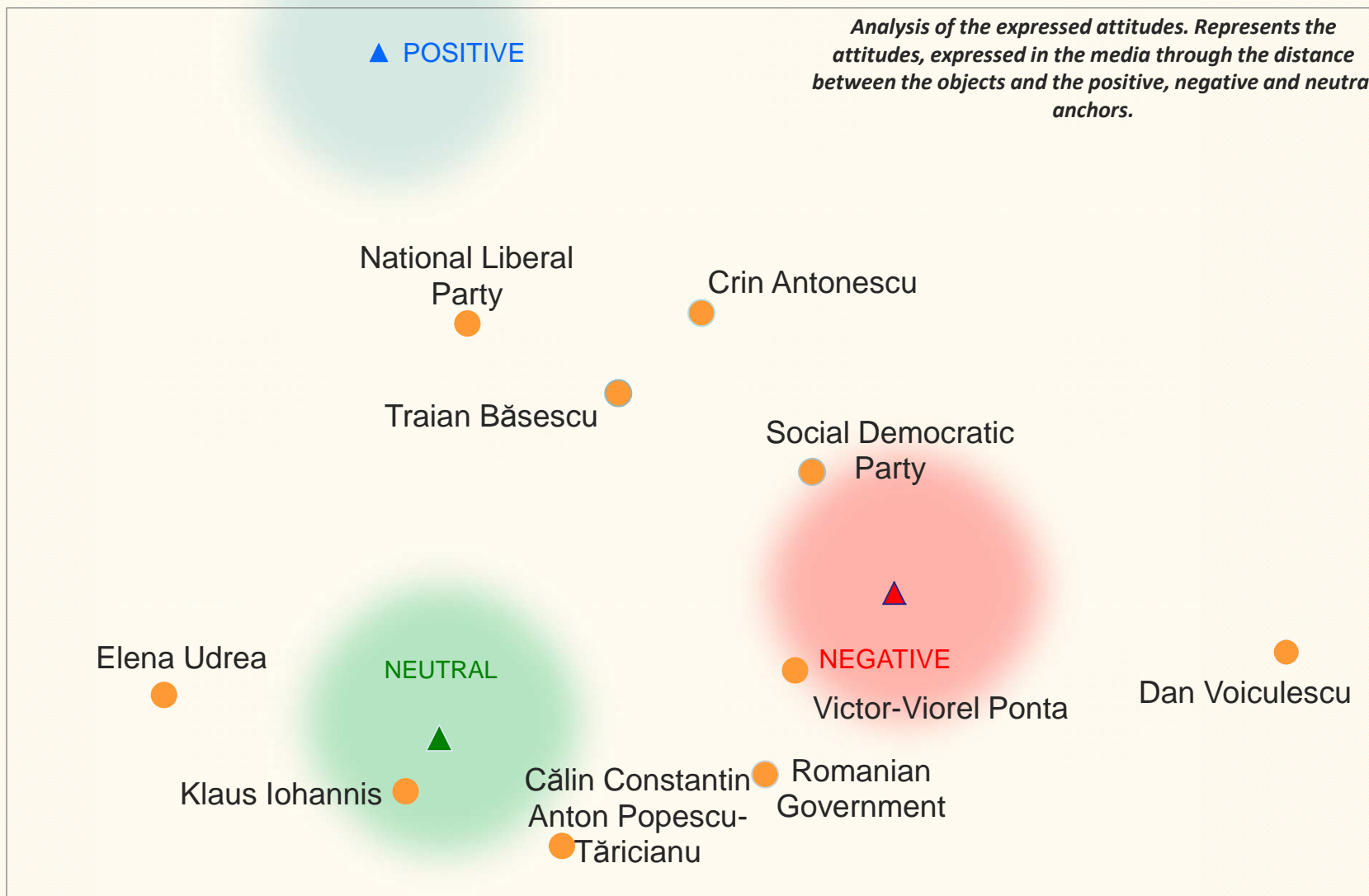
## JURNALUL NAȚIONAL



# EXPRESSED ATTITUDES TOWARDS MENTIONED OBJECTS



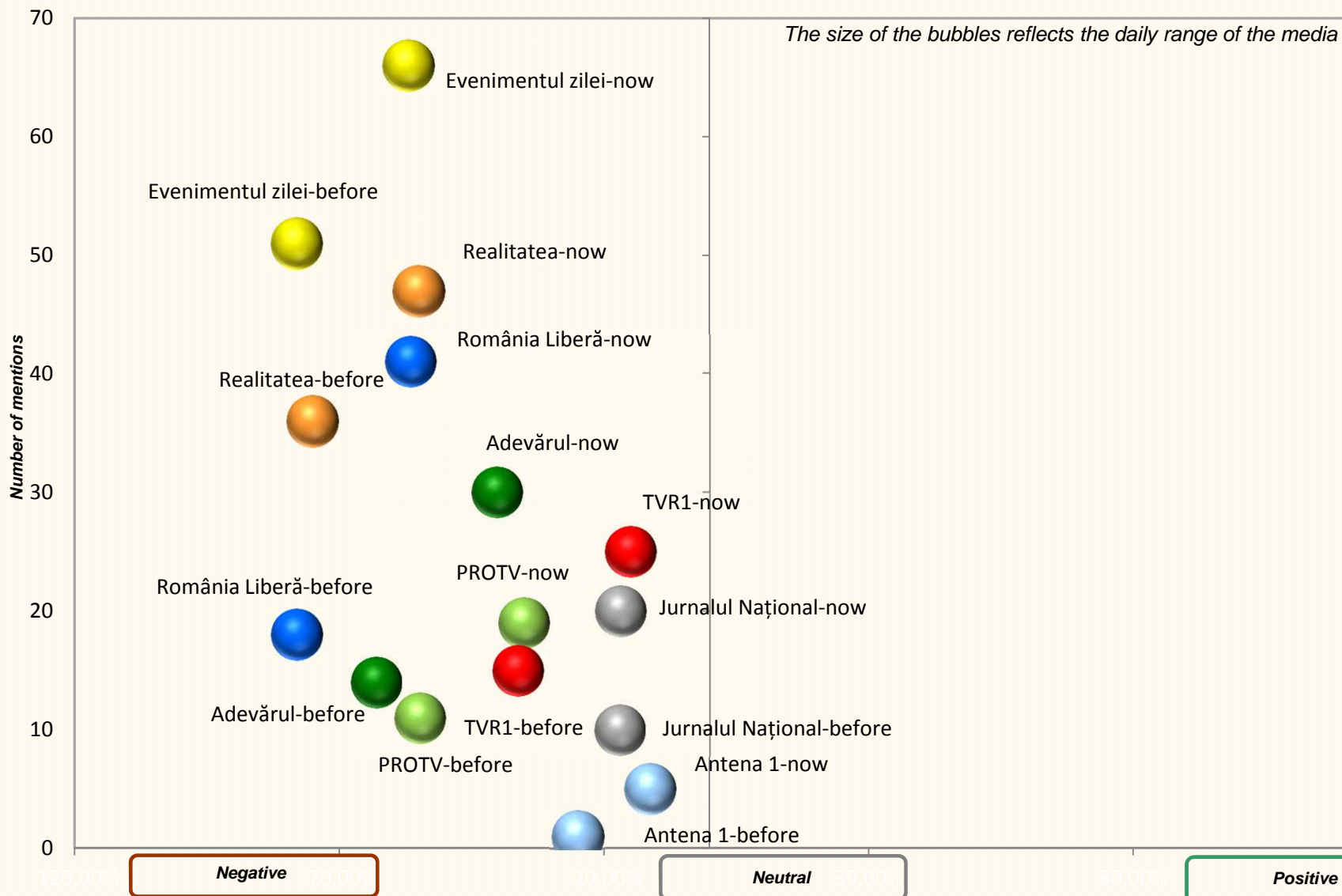
## EVENIMENTUL ZILEI



# ATTITUDES TOWARD POLITICAL FIGURES/PARTIES (comparison between the two periods)



## VICTOR-VIOREL PONTA

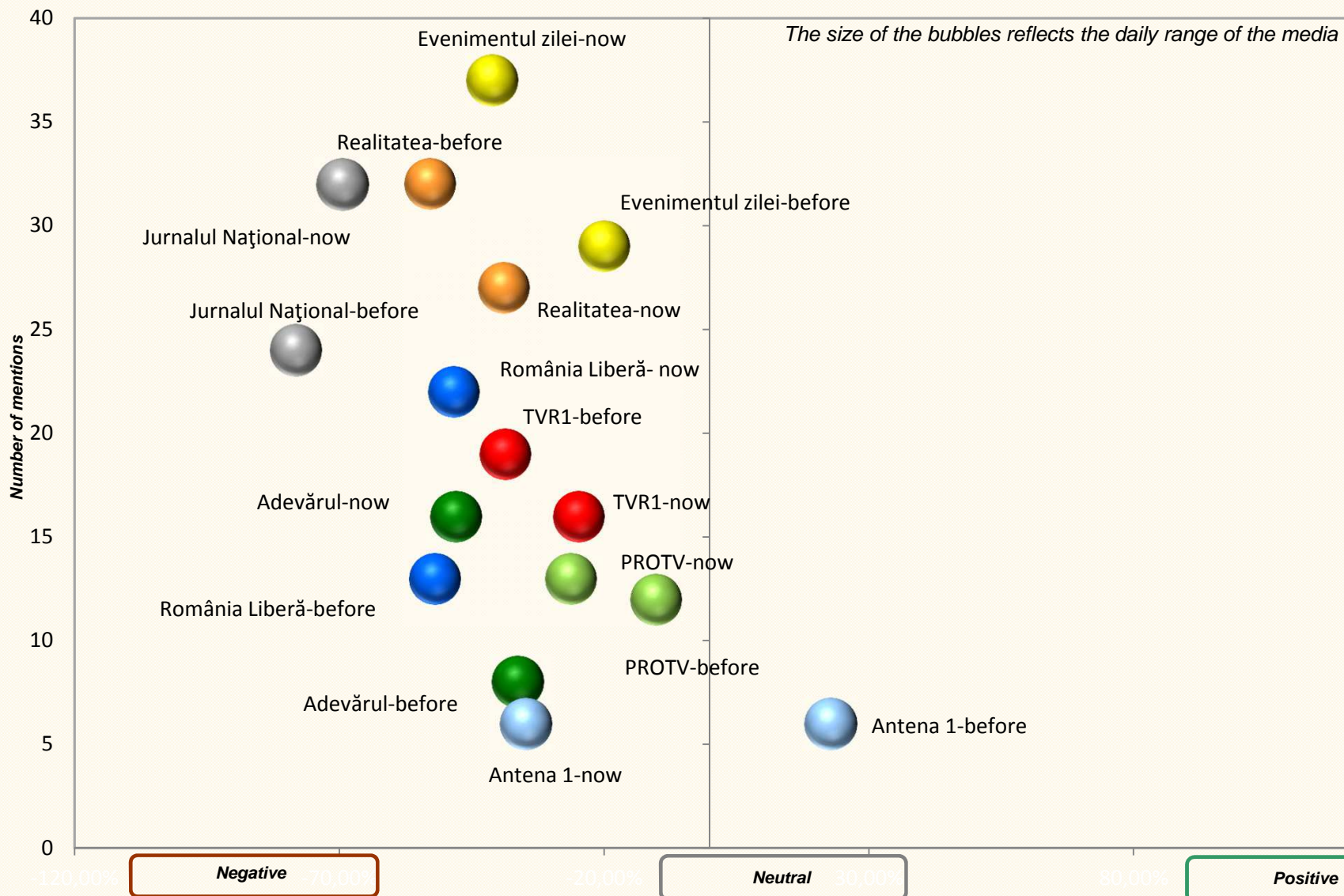




# ATTITUDES TOWARD POLITICAL FIGURES/PARTIES (comparison between the two periods)



## TRAIAN BĂSESCU



# ATTITUDES TOWARD POLITICAL FIGURES/PARTIES (comparison between the two periods)



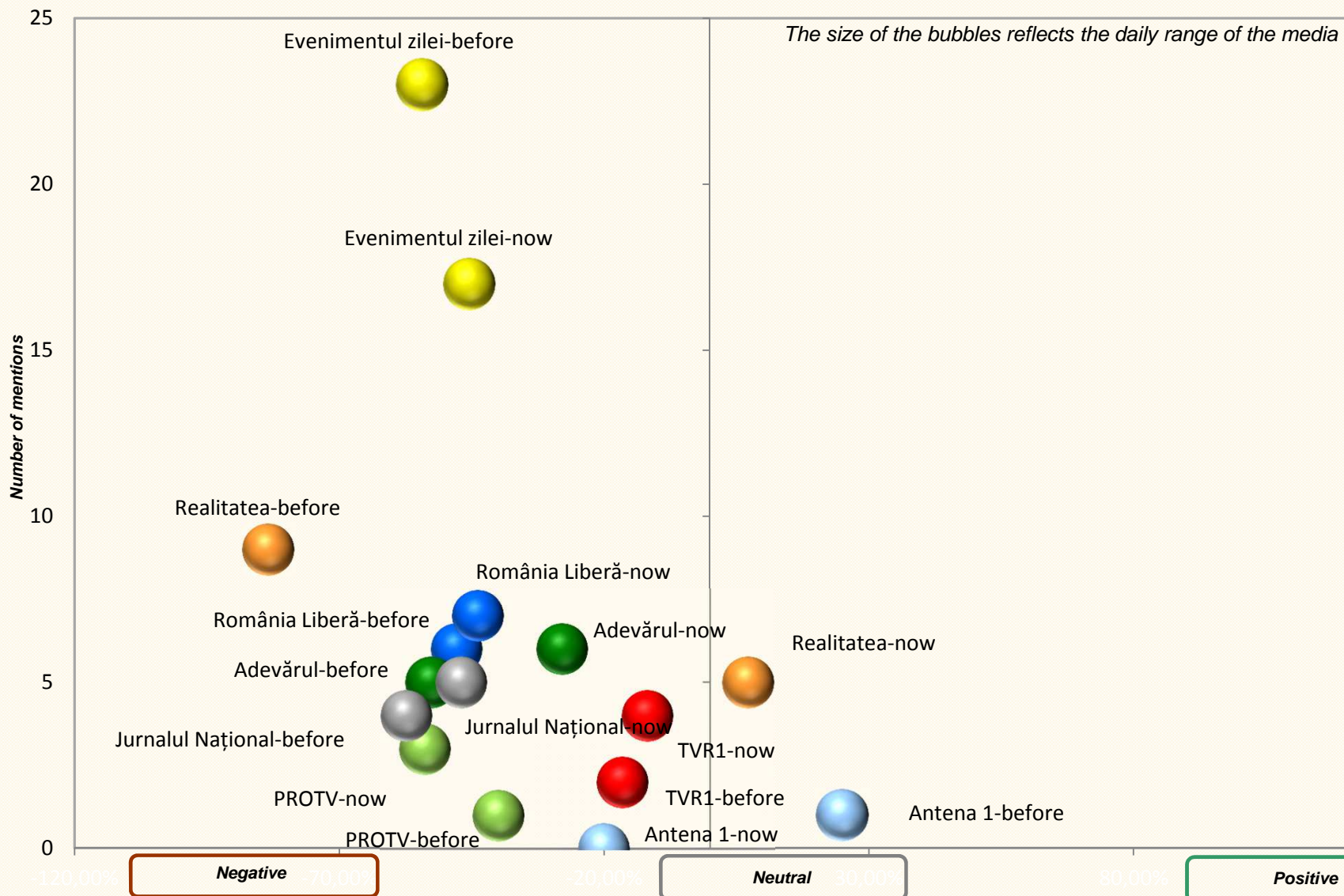
KLAUS IOHANNIS



# ATTITUDES TOWARD POLITICAL FIGURES/PARTIES (comparison between the two periods)



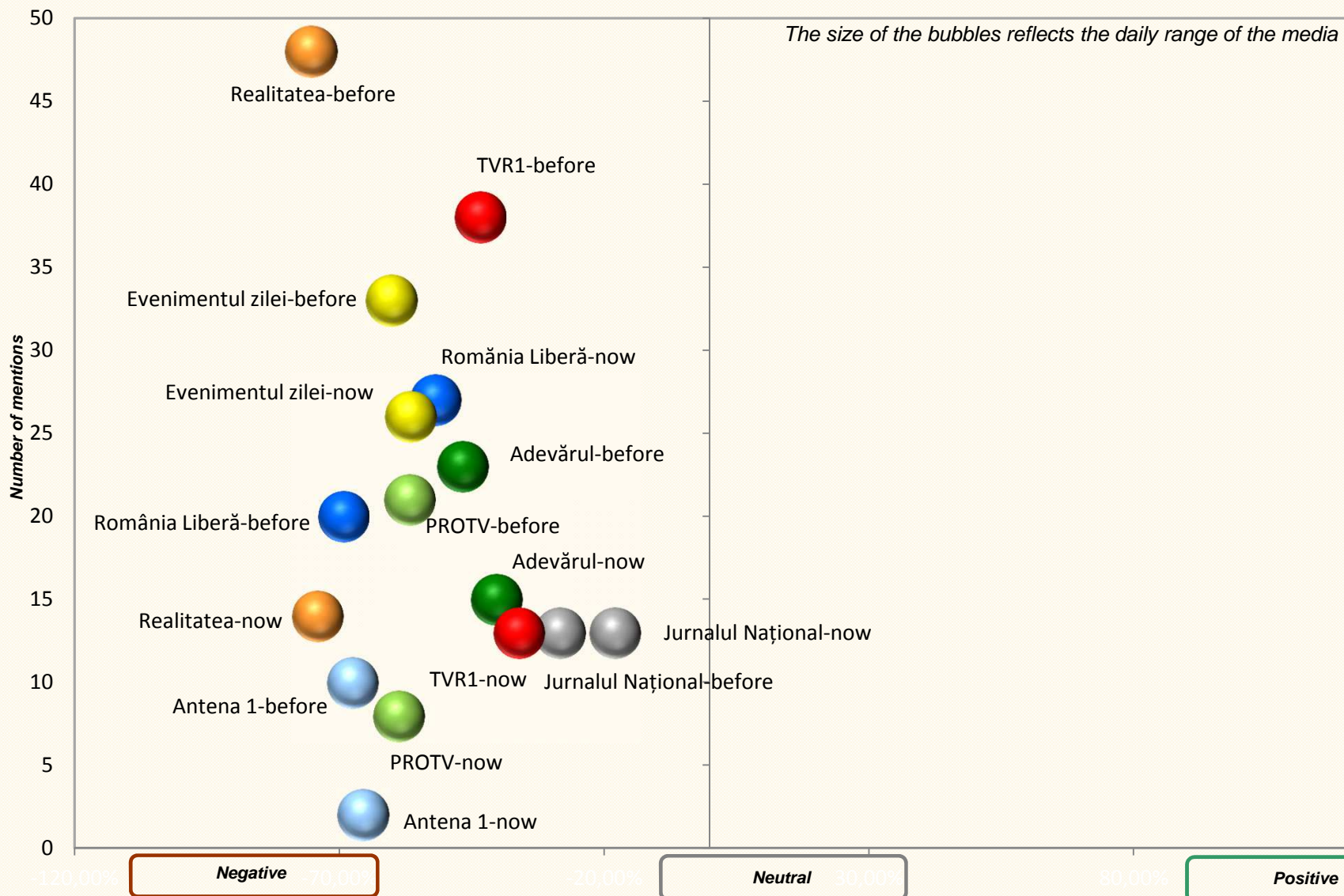
## CRIN ANTONESCU



# ATTITUDES TOWARD POLITICAL FIGURES/PARTIES (comparison between the two periods)



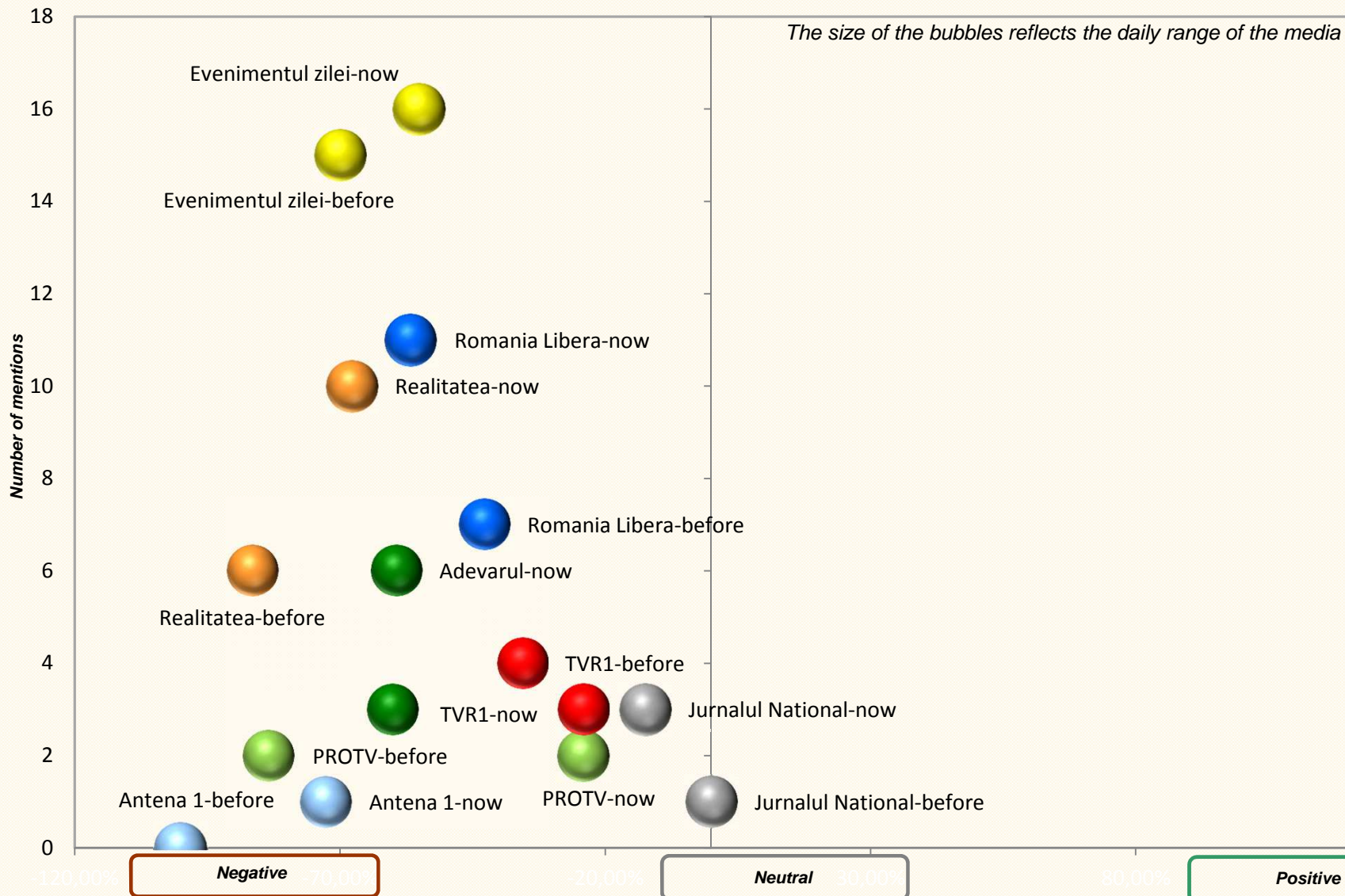
## Romanian Government



# ATTITUDES TOWARD POLITICAL FIGURES/PARTIES (comparison between the two periods)



## Social Democratic Party



# ATTITUDES TOWARD POLITICAL FIGURES/PARTIES (comparison between the two periods)



## National Liberal Party

