

EPP Party Barometer

November 2021

by **Olaf Wientzek**
Konrad-Adenauer-Stiftung

15/11/2021

Key developments in the reporting period (I)

Situation of the EPP family in the EU as a whole

- › The EPP family is the strongest political family in polls in nine countries, the socialist in nine (if one adds the Slovakian Hlas, which is not yet officially a PES member), the liberal/Renew in three, the Eurosceptic-national conservative EKR and the far-left GUE/NGL party in one country each. In Hungary Fidesz is ahead (currently not part of any party family), in Bulgaria and in Latvia (combined) formally independent parties were ahead. In the Czech Republic, ALDE and EPP are about evenly matched.
- › The picture is similar if we look at the strongest single party and not the largest party family: then the EPP leads in nine countries, the Socialists in nine (if you include Hlas in Slovakia among the Socialists), Liberals in three, right-wing populists of the ID in two, the EKR and the GUE/NGL in one country each, while in Hungary the formally independent Fidesz is ahead, in Bulgaria a new electoral alliance which (as a whole) is still unaffiliated came first in the polls.
- › In some countries the polling data for several party families are very close (or in some opinion polls another party family is ahead). This is particularly true in Austria, Belgium, Czechia, Italy, Latvia, Lithuania, Sweden and Spain

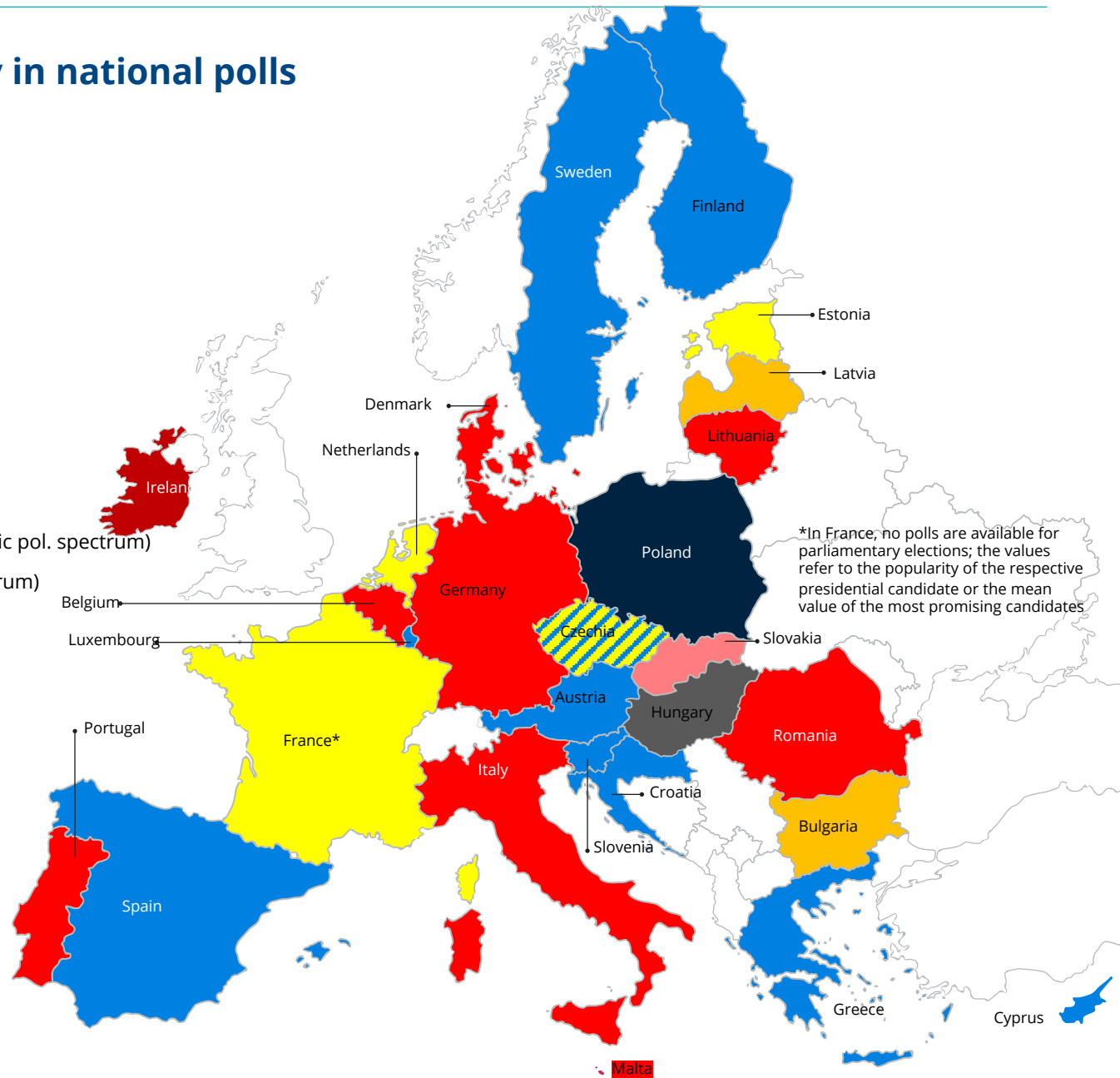
Situation in the European Council

- › EPP, Socialists and Liberals are about equally strong in the European Council:
 - › eight of the 27 heads of state and government in the European Council currently belong to the EPP family (nine of the 27 if you add the Slovakian prime minister, whose party is part of the EPP parliamentary group but not the EPP), **after a change of government in Germany correspondingly only seven (or eight) of 27.**
 - › **seven** heads of state and government belong to the Liberals/Renew (after Babiš' departure only **six**)
 - › six belong to the Social Democrats/Socialists, after a change of government in Germany **seven**
 - › one belongs to the Eurosceptic Conservatives (after a change of government in the Czech Republic there would be **two**),
 - › four are formally independent

Strongest party family in national polls

Legend

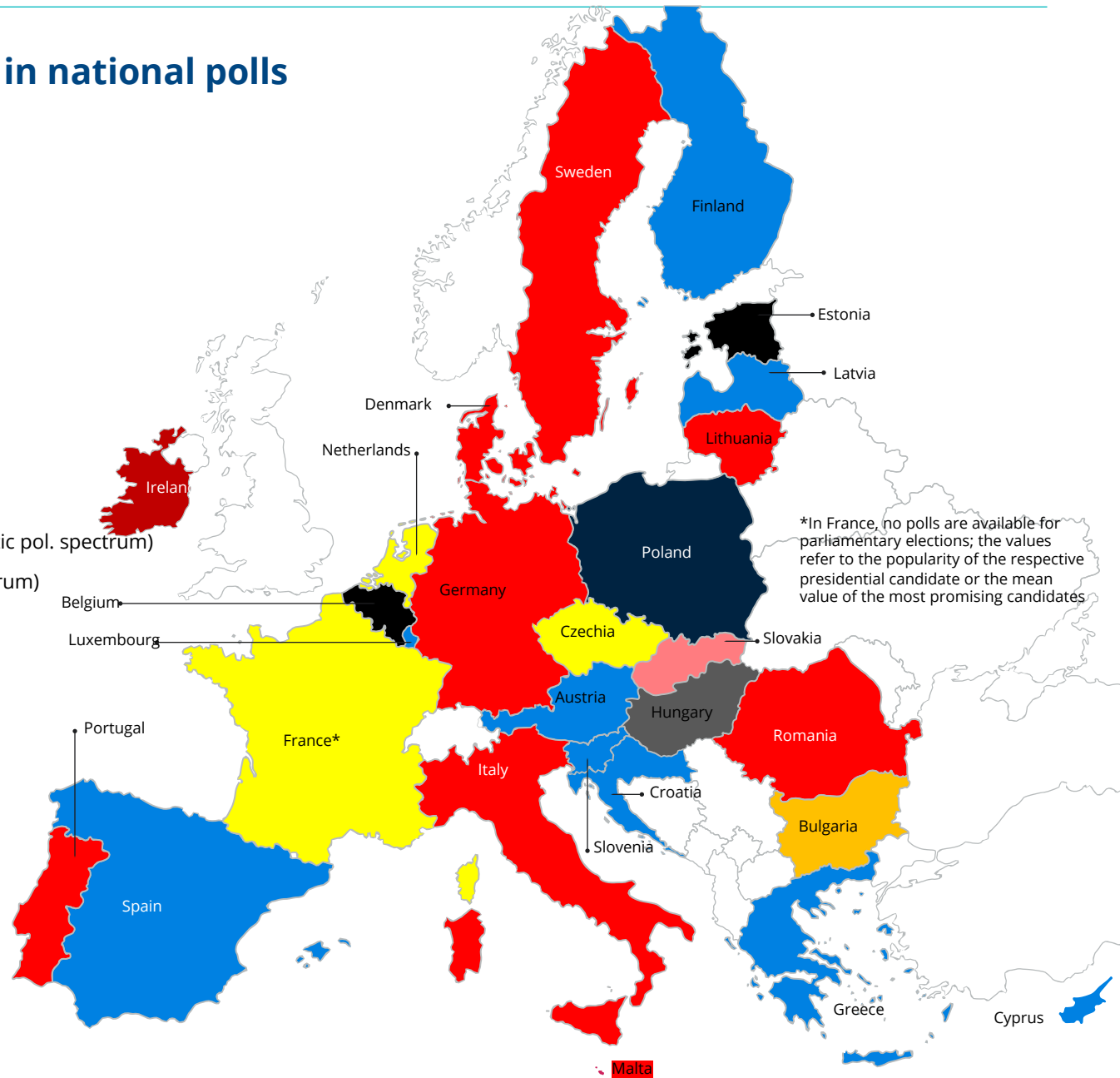
- EPP family
- PES / S&D family
- ALDE + Renew family (Liberals)
- ACRE / EKR family
- The Greens/EFA
- GUE/NGL (left fringe)
- ID / Far-right populists
- Independents (right-wing Eurosceptic pol. spectrum)
- Independents (moderate pol. spectrum) and others



Strongest single party in national polls

Legend

- EPP family
- PES / S&D family
- ALDE + Renew family (Liberals)
- ACRE / EKR family
- The Greens/EFA
- GUE/NGL (left fringe)
- ID / Far-right populists
- Independents (right-wing Eurosceptic pol. spectrum)
- Independents (moderate pol. spectrum) and others



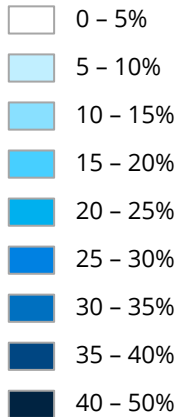
Strength of the EPP family and the respective strongest individual EPP parties in the EU member states

Election result of the largest EPP partner party in the last national parliamentary elections

(in brackets above: date for the presumably next national parliamentary election)

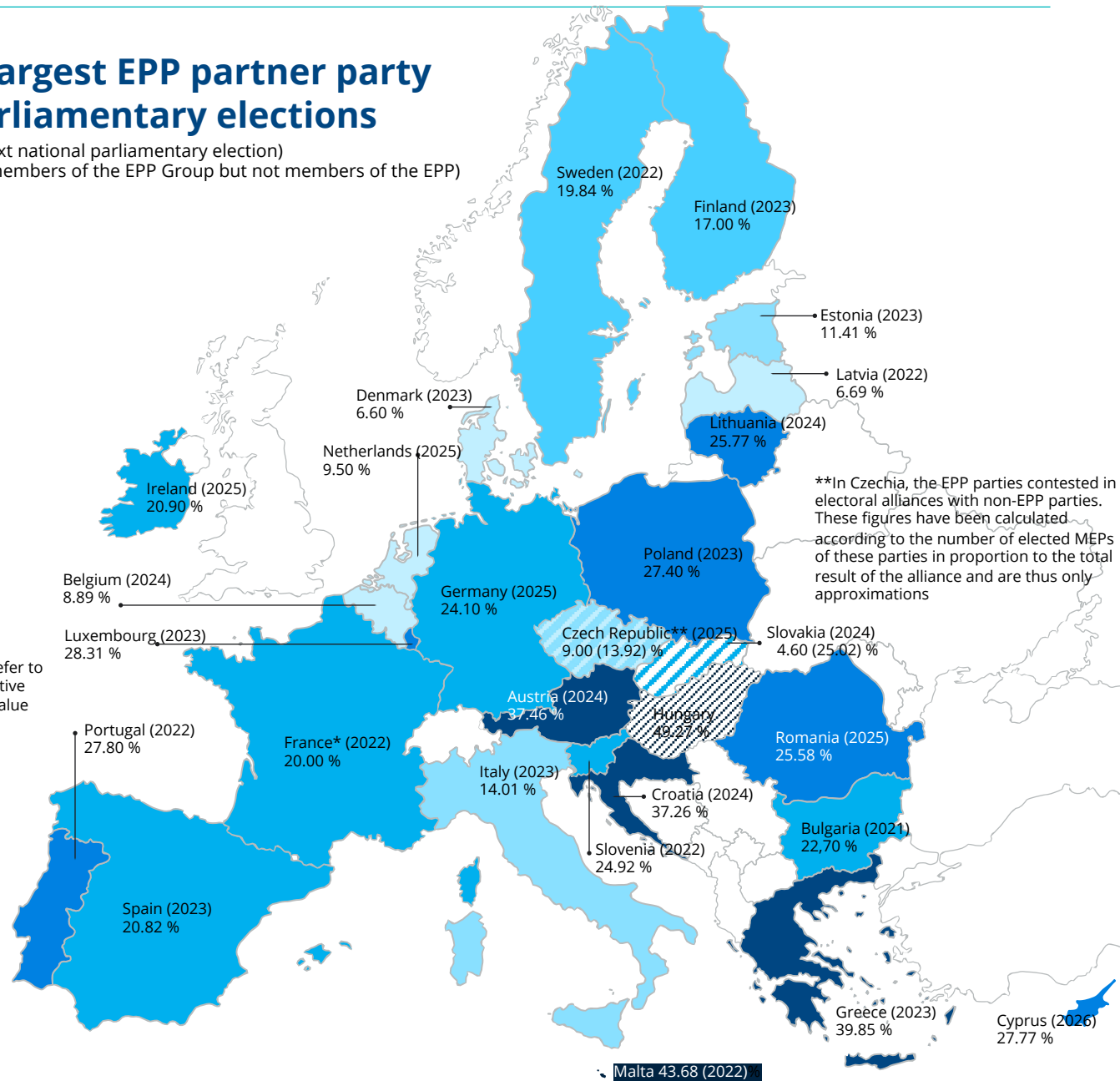
(In brackets below: figures of parties that are members of the EPP Group but not members of the EPP)

Legend



*In France, no polls are available for parliamentary elections; the values refer to the showing/popularity of the respective presidential candidate or the mean value of the most promising candidates

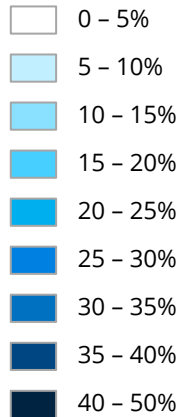
**In Czechia, the EPP parties contested in electoral alliances with non-EPP parties. These figures have been calculated according to the number of elected MEPs of these parties in proportion to the total result of the alliance and are thus only approximations



Strength of the largest EPP partner party in opinion polls

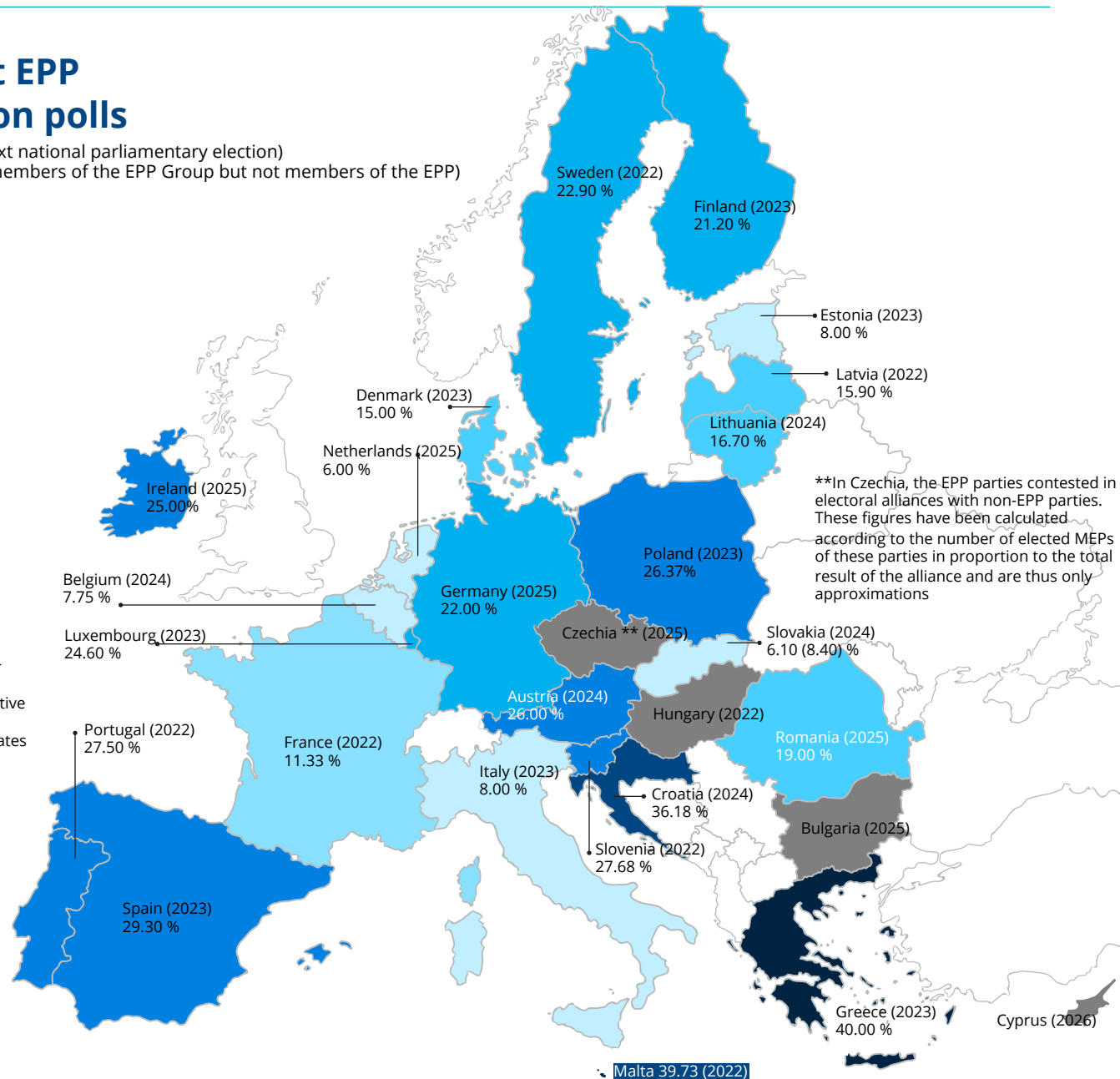
(in brackets above: date for the presumably next national parliamentary election)
 (In brackets below: figures of parties that are members of the EPP Group but not members of the EPP)

Legend



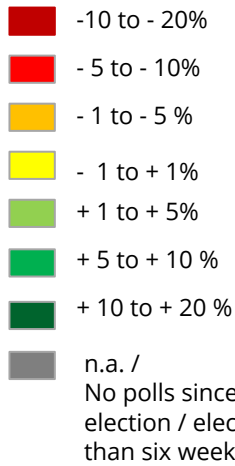
*In France, no polls are available for parliamentary elections; the values refer to the popularity of the respective presidential candidate or the mean value of the most promising candidates

**In Czechia, the EPP parties contested in electoral alliances with non-EPP parties. These figures have been calculated according to the number of elected MEPs of these parties in proportion to the total result of the alliance and are thus only approximations

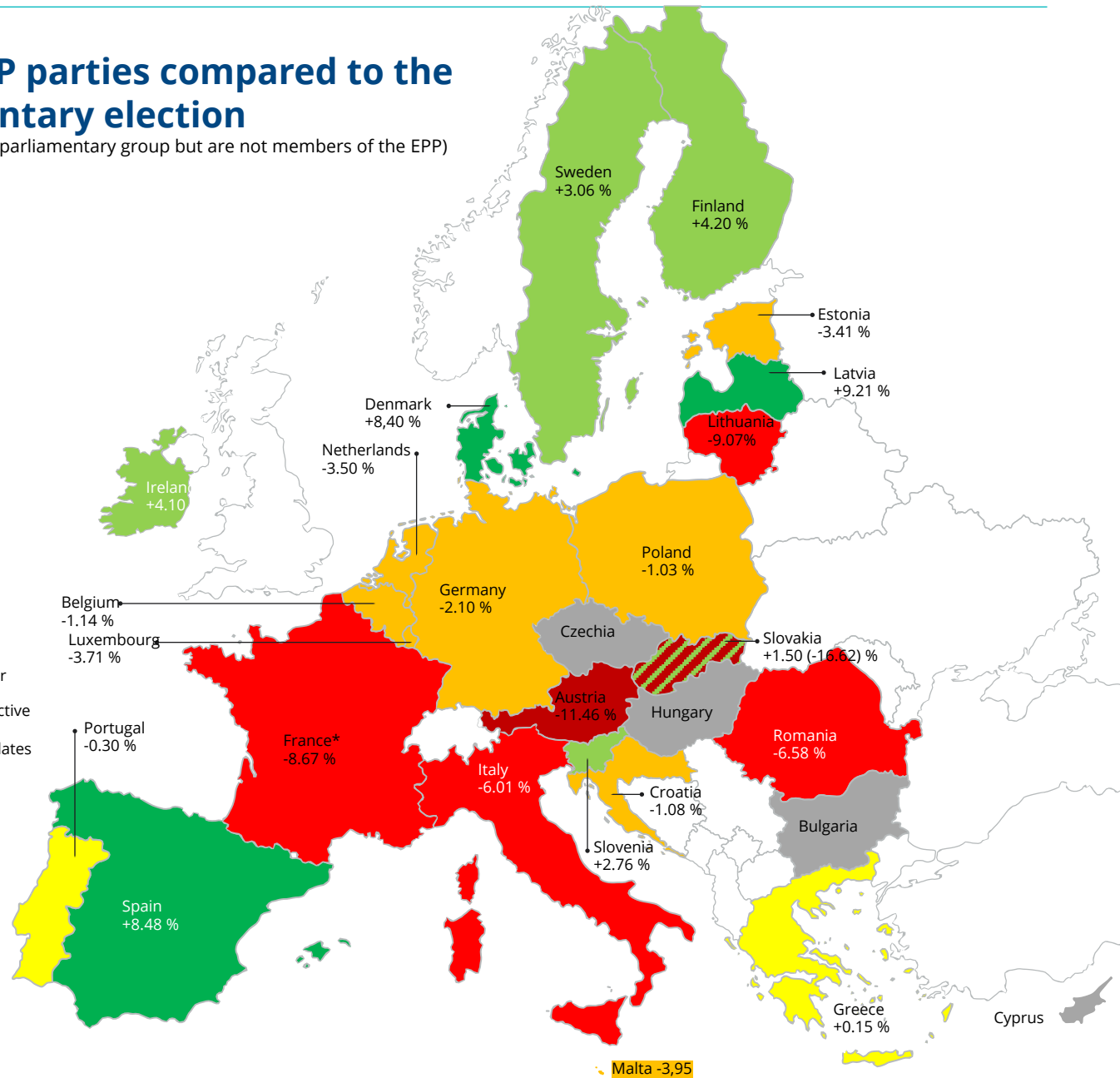


Gains / losses of all EPP parties compared to the last national parliamentary election

(in brackets: parties included that sit in the EPP parliamentary group but are not members of the EPP)



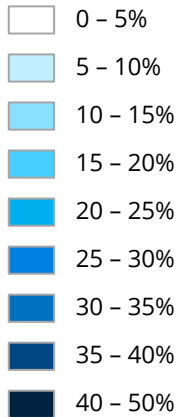
*In France, no polls are available for parliamentary elections; the values refer to the popularity of the respective presidential candidate or the mean value of the most promising candidates



Election result of the EPP party family in the last national parliamentary elections

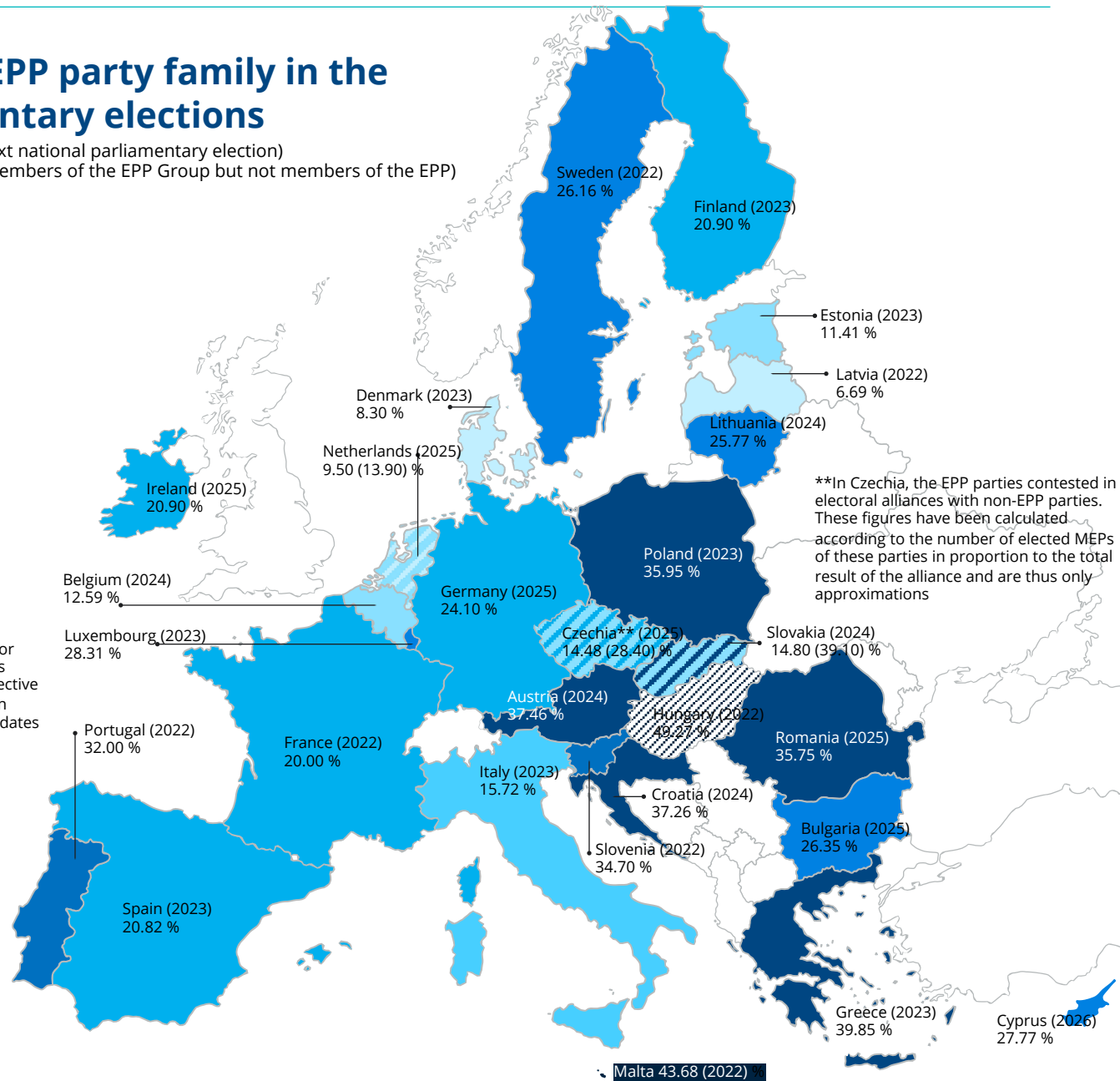
(in brackets above: date for the presumably next national parliamentary election)
 (In brackets below: values of parties that are members of the EPP Group but not members of the EPP)

Legend



*In France, no polls are available for parliamentary elections; the values refer to the popularity of the respective presidential candidate or the mean value of the most promising candidates

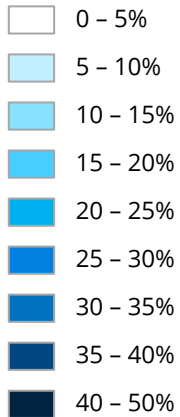
**In Czechia, the EPP parties contested in electoral alliances with non-EPP parties. These figures have been calculated according to the number of elected MEPs of these parties in proportion to the total result of the alliance and are thus only approximations



Poll of the EPP party family in national polls

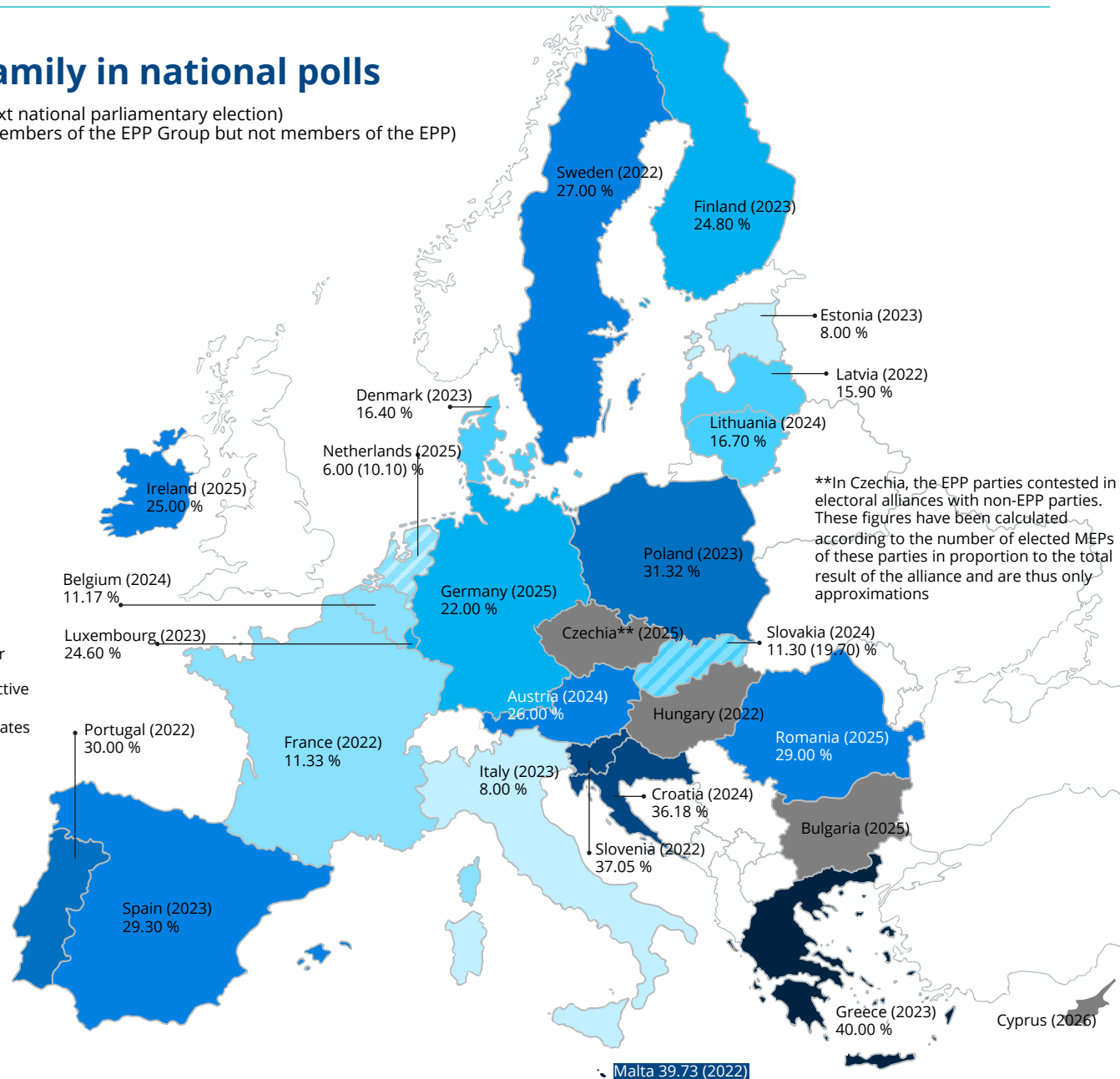
(in brackets above: date for the presumably next national parliamentary election)
 (In brackets below: values of parties that are members of the EPP Group but not members of the EPP)

Legend



*In France, no polls are available for parliamentary elections; the values refer to the popularity of the respective presidential candidate or the mean value of the most promising candidates

**In Czechia, the EPP parties contested in electoral alliances with non-EPP parties. These figures have been calculated according to the number of elected MEPs of these parties in proportion to the total result of the alliance and are thus only approximations

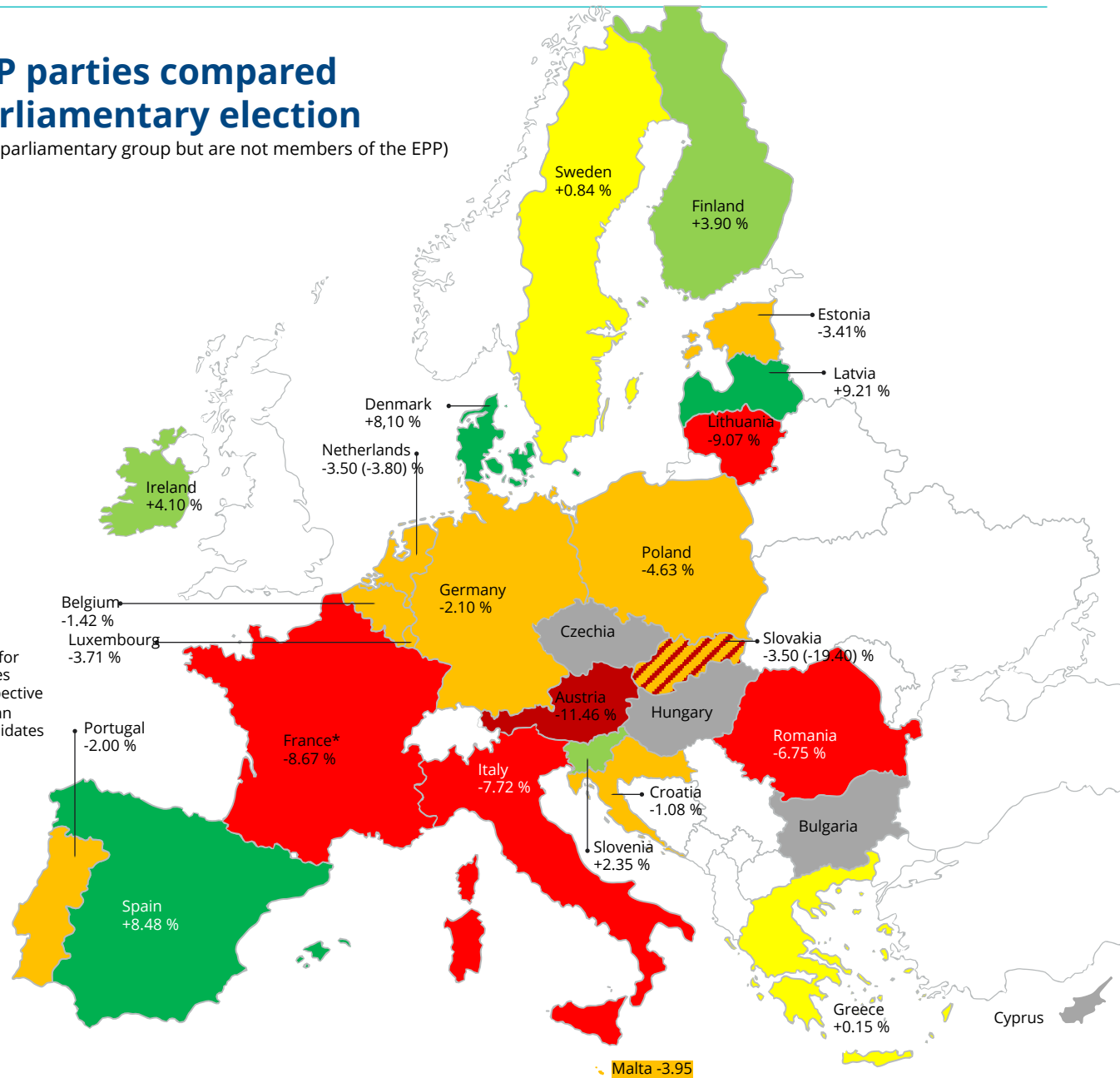


Gains / losses of all EPP parties compared to the last national parliamentary election

(in brackets: parties included that sit in the EPP parliamentary group but are not members of the EPP)

- 10 to -20%
- 5 to -10%
- 1 to -5%
- 1 to +1%
- + 1 to +5%
- + 5 to +10%
- + 10 to +20%
- n.a. /
No polls since the last election / election less than six weeks ago

*In France, no polls are available for parliamentary elections; the values refer to the popularity of the respective presidential candidate or the mean value of the most promising candidates

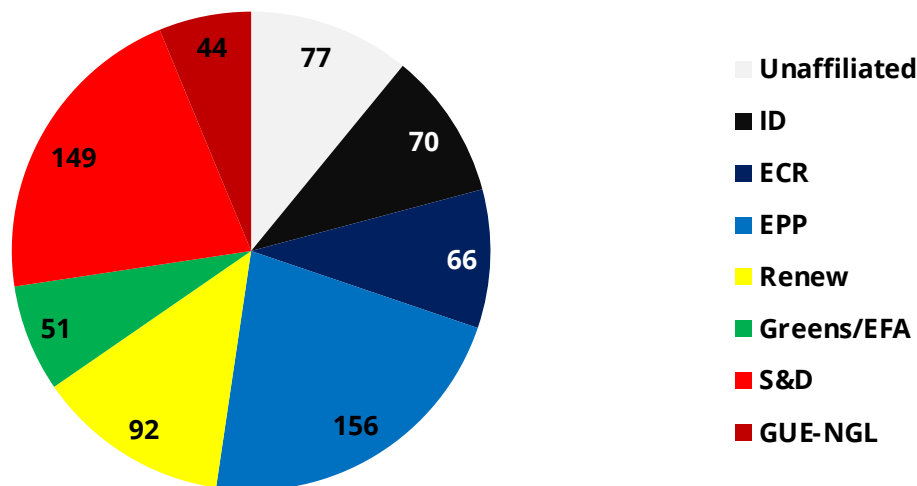


Scenarios for the composition of the EP

Scenario 1: Status quo

Composition of the European Parliament with unchanged parliamentary groups

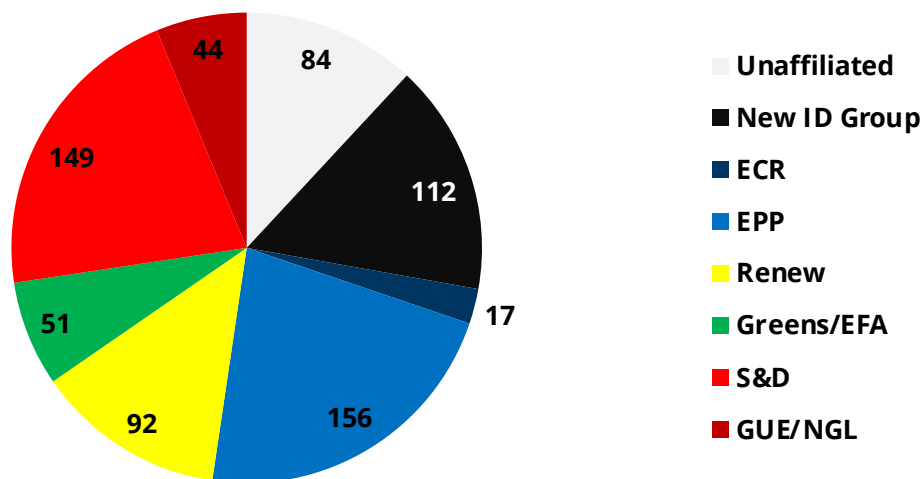
- › IMPORTANT: National polls can only be used with qualifications as a picture of public opinion for the EP elections, so the figures presented here should be treated with caution
- › If the membership of the respective parliamentary groups in the EP were to remain constant, the following picture would emerge:
 - › the EPP would significantly lose seats compared to the EP elections, but would still remain the largest force by a very narrow margin. The outcome would be 156 seats and within a range of 146–167 seats
 - › The Socialists/Social Democrats would gain slightly and be on a par with the EPP
 - › The Liberals, ECR and ID would more or less maintain their number of seats, the far-left GUE/NGL group would gain slightly
 - › The Greens would lose significantly compared to their current number of seats; the actual strength of the Greens in France remains difficult to assess. Thus, the weak polling data at present for the Greens presidential candidate is only a very weak indicator for their actual strength.



Scenario 2: United far-right parties

How strong would a united faction of the EU's far-right parties be?

- › On 2 July 2021, 16 party leaders – embedded in either the ECR, ID or EP independent parties (including PiS, Fidesz, Lega, FdI and RN) – from the national conservative, right-wing populist and radical right spectrum signed a joint letter. This is interpreted by some observers as preparatory work for a future joint parliamentary group in the EP
- › If such an alliance were to form, it would have 112 MEPs, according to the latest polls; if it succeeded in winning additional parties among the independents, or from the remnants of the ID or ECR, such a group could grow to over 130
- › The ECR group would largely shrink to a few moderate parties and would no longer have parliamentary group status; the same would apply to the ID “remaining parties” (including the AfD)
- › **Experience from past parliamentary terms suggests that the formation of ONE Eurosceptic / right-wing populist faction would be difficult. Attempts to do so in past legislative periods failed.**

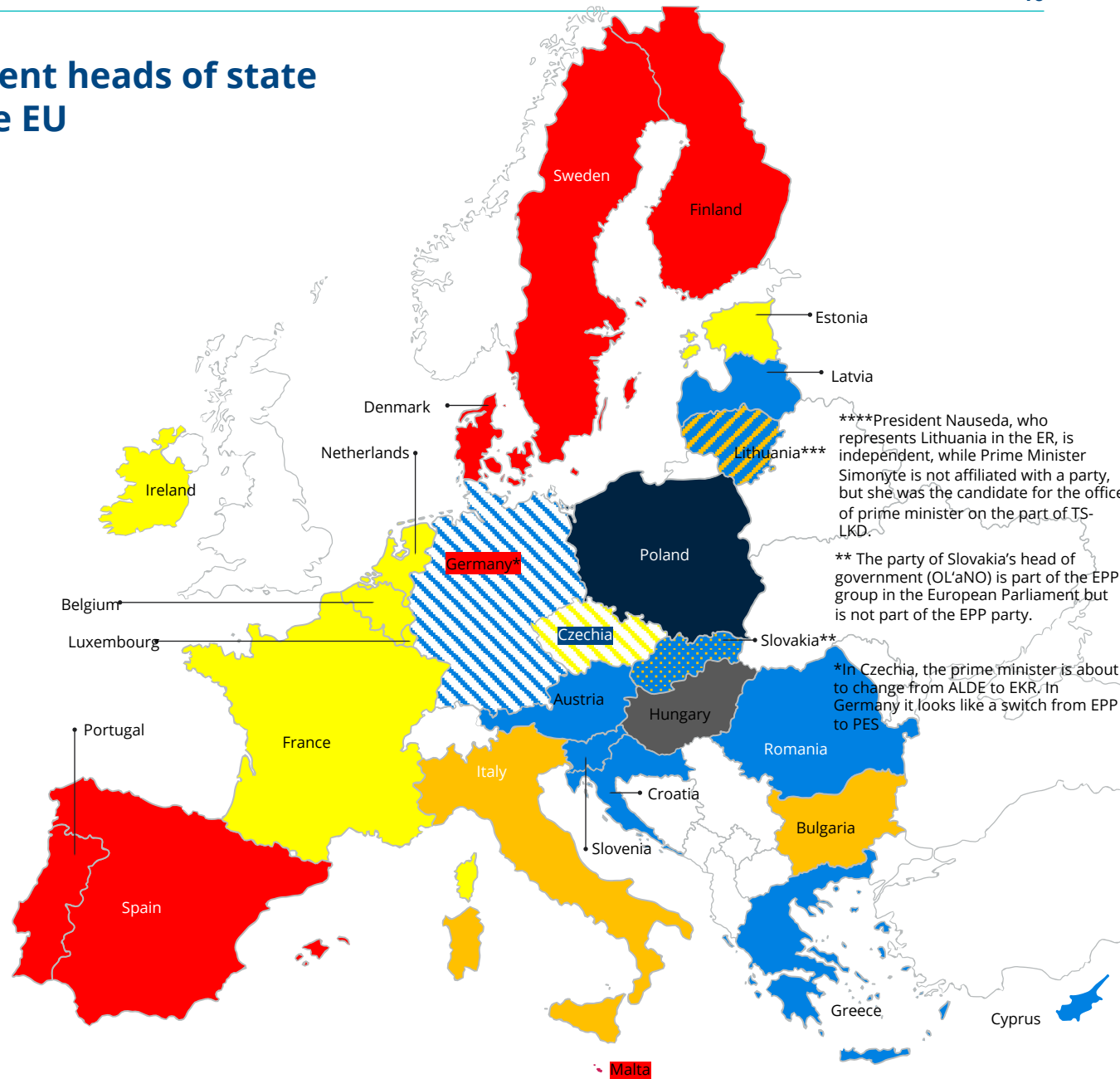


The EPP family's participation in government

Political family of current heads of state and government in the EU

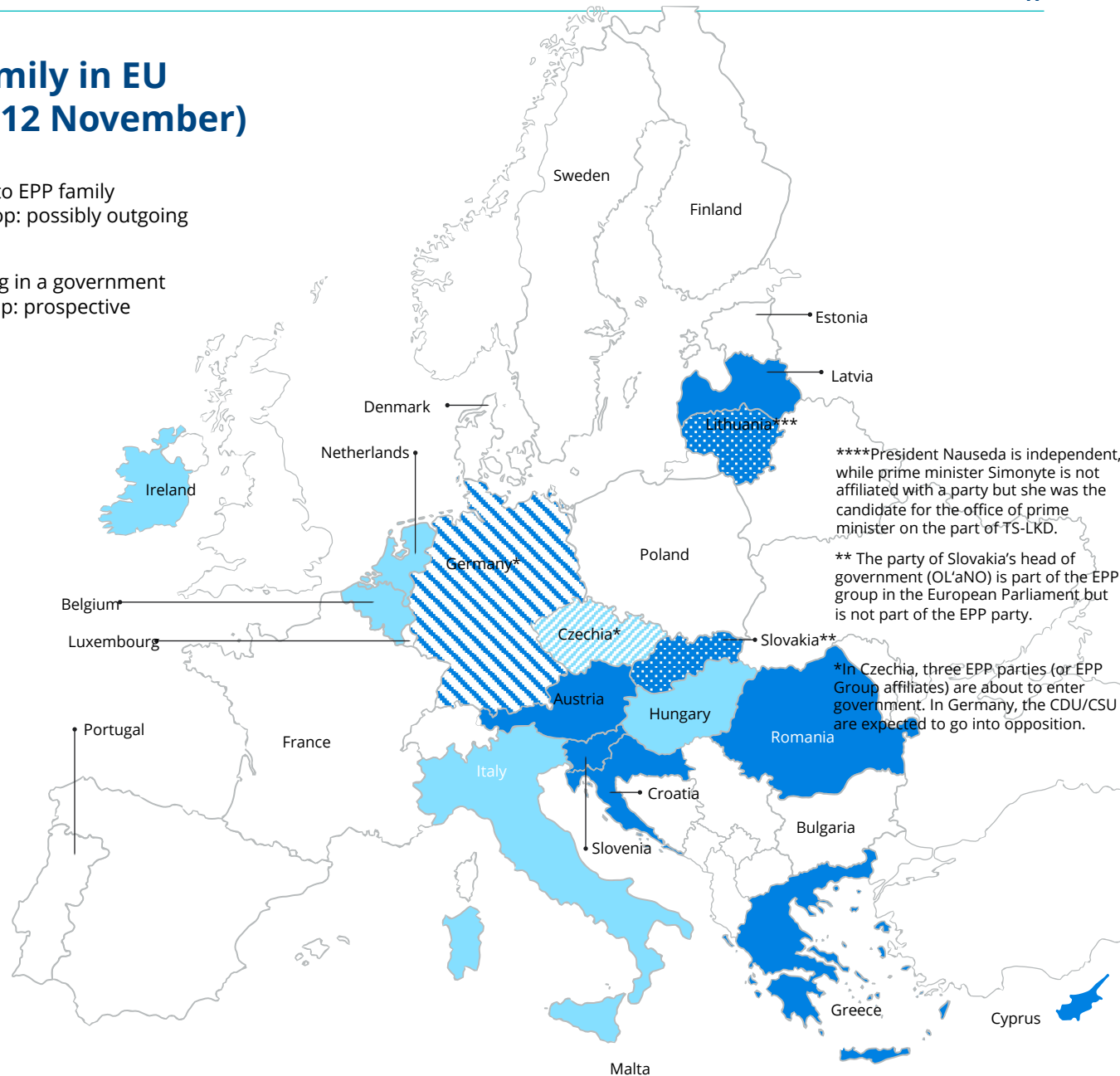
Legend

- EPP family
- PES / S&D family
- ALDE + Renew family (Liberals)
- ACRE / EKR family
- The Greens/EFA
- GUE/NGL (left fringe)
- ID / far-right populists
- Independent (Fidesz)
- Other independents



Strength of the EPP family in EU member states (as of: 12 November)

- Head of state/government belongs to EPP family (hatched from left bottom to right top: possibly outgoing government)
- Parties in the EPP family participating in a government (hatched from left bottom to right top: prospective government)



****President Nausėda is independent, while prime minister Šimonytė is not affiliated with a party but she was the candidate for the office of prime minister on the part of TS-LKD.

** The party of Slovakia's head of government (OL'ANO) is part of the EPP group in the European Parliament but is not part of the EPP party.

*In Czechia, three EPP parties (or EPP Group affiliates) are about to enter government. In Germany, the CDU/CSU are expected to go into opposition.

Notes

- › In France, no polls for national parliamentary elections have been gathered since the elections in June 2017. These results refer to the figures achieved by the respective presidential candidate as well as the polls for a corresponding candidate
- › In Belgium, surveys are only collected at the regional level: in order to obtain an adequate result at the national level, these individual results were each weighted according to the number of eligible voters (voting is compulsory) and the actual turnout. There may be small deviations as a result. In Belgium, the CD&V, CSP and CDH partner parties only compete regionally. The results in the individual regions are weighted accordingly. The CSP only competes in European elections. At national elections, it is part of the CDH, as the Belgian parliament is composed according to regions (Flanders, Wallonia, Brussels) and not according to language community.
- › In several countries, undecided and non-voters are included as part of the total sum (100%) in polls. The polling numbers are extrapolated accordingly. Example: party A has 13% in the polls. 30% of respondents will not vote, and 20% of respondents are undecided. Accordingly, support for Party A is reported to be 26%.
- › In Germany, the CDU and CSU are not listed as two separate parties owing to the fact they form a single parliamentary bloc and that their polling numbers are always added together.
- › In several countries, parties are part of the EPP parliamentary group without belonging to the EPP. Some of them even belong to other party families, for example, CU and 50 Plus in the Netherlands, STAN in the Czech Republic and Olano in Slovakia. Their respective results are given in brackets.
- › Some of the parties in the ACRE/EKR family are right-wing populist or have strong right-wing populist elements. As the ACRE family is now (or is for the time being) a mainstream party family, the parties belonging to it are listed as part of the ACRE family and not as "right-wing populist".
- › In the Czech Republic, the EPP parties contested in electoral alliances with non-EPP parties. These figures have been calculated according to the number of elected MEPs of these parties in proportion to the total result of the alliance and are thus only approximations. The same applies to two of the EPP member parties in Bulgaria

Sources

Ipsos (Belgium), Trend (Belgium), Voxmeter (Denmark), Kantar (Germany), Norstat (Estonia), Kantar TNS (Finland), Harris (France), Pulse/RC (Greece), RedC (Ireland), Ipsos (Italy), Ipsos (Croatia), Factum (Latvia), Vilimorus (Lithuania), Sondesfro (Luxembourg), Malta Today (Malta), Ipsos (Netherlands) OGM (Austria), Ibris (Poland), Eurosondagem (Portugal), internoder CURS (Romania), Novus (Sweden), Focus (Slovakia), Mediana (Slovenia), NC Report (Spain), Kantar (Czech Republic), Zavecz (Hungary), Pulse (Cyprus)

Legal notice

Konrad-Adenauer-Stiftung e. V.

Dr Olaf Wientzek

Director of the Multilateral Dialogue in Geneva

European and International Cooperation

Avenue de France 23

CH-1202 Geneva

T +41 22 / 74 870 75

olaf.wientzek@kas.de

Publisher: Konrad-Adenauer-Stiftung e. V. 2021, Berlin



The text of this work is licensed under the terms of “Creative Commons Attribution-ShareAlike 4.0 international”, CC BY-SA 4.0 (downloadable at: <https://creativecommons.org/licenses/by-sa/4.0/legalcode.de>)