

EPP Party Barometer April 2021

The Situation of the European People's Party in the EU

(as of: 19 April 2021)

prepared by
Dr. Olaf Wientzek

Summary and latest developments (I)

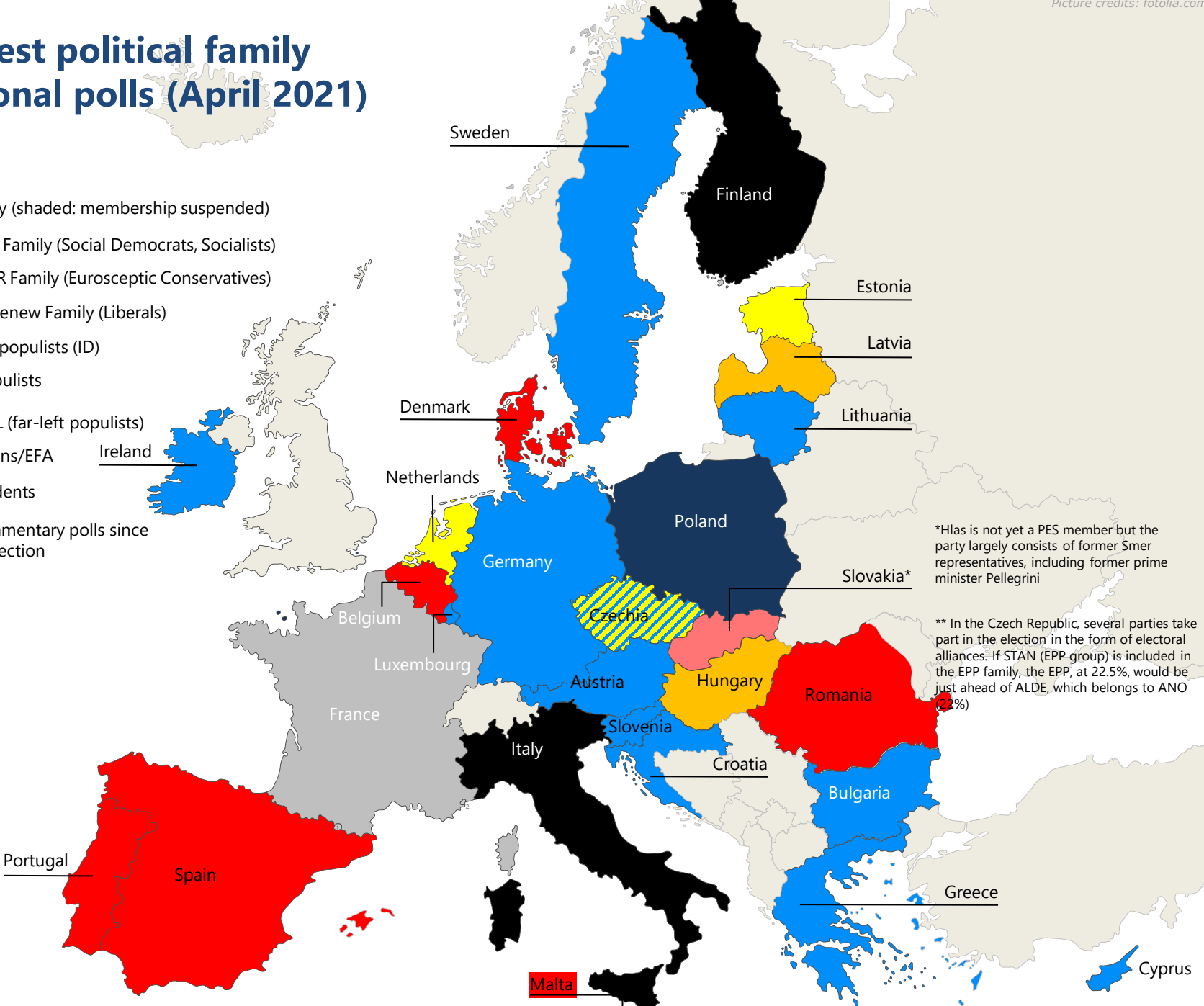
- The EPP family has come out as **the strongest political family in polls in 11 countries**; the Party of European Socialists (PES) in 7 (if you add Slovakia's Hlas, which is not yet officially a PES member); Liberals/Renew in 2; far-right populists (ID) in Italy and Finland; the Eurosceptic/national conservative ECR in Poland. In Hungary and Latvia (combined), independent parties are front-running. No polls focusing on the parliament have taken place in France since the EP elections. In the Czech Republic, several parties compete in electoral alliances. If STAN (EPP group but not EPP party) is counted as part of the EPP family, the EPP, at 22.5%, would be just ahead of ANO (22%), which is part of ALDE.
- The picture is similar if we look at the strongest single party and not the largest party family: Then the **EPP is ahead in 11 countries**; the Socialists in 7; the Liberals in 3; far-right populists (ID) in 3; the ECR in one country; Fidesz is in the lead in Hungary.
- 9 of the 27 heads of state and government in the European Council are currently members of the EPP family (10 of 27 if one counts the Slovak prime minister, whose party belongs to the EPP group but not the EPP party); 7 heads of state and government are members of the Liberals/Renew; 6 of the Social Democrats/Socialists; one the Eurosceptic conservatives; 3 are formally independent.
- In many countries, the margin of the leading party family is extremely small (especially in Belgium, Latvia, Lithuania, Ireland, Italy, Finland, Sweden, Spain).

Summary and latest developments (II)

- In the **Czech Republic** (elections in 2021), the EPP parties KDU-CSL, TOP09 remain in the mid-single digits; STAN (EPP group, not EPP party) stands at 12%. The parties take part in elections as part of (different) party alliances.
- In **Poland**, the EPP parties cannot benefit from the relative weakness of the PiS.
- In **Slovakia**, approval for OĽaNO, the party of the Slovak prime minister (EPP group in the European Parliament but not [yet] an EPP member), has declined substantially compared with the election and stands now at around 10%.
- In **Cyprus** (elections in 2021), DISY is still the front runner, with a medium-sized lead, despite slight losses.
- In **Romania**, the PNL only placed second behind the Socialists in the December 2020 elections but was able to form a government.
- In the **Netherlands** (elections in March 2021), the Christian Democrats attained 9.5% and thus undercut their own expectations (previously: 12.4%)
- In **Bulgaria**, the GERB (elections in April 2021) was without any doubt the strongest force; yet the outlook for forming a government is considered uncertain. Other EPP parties are represented through competing electoral alliances in Parliament.
- A bright sign is the rise of the **Danish Conservatives**, who are the biggest opposition party in polls, at approx. 15%-16%.
- The “COVID-19 management bonus” for government parties, which became apparent in the 2nd and 3rd quarters of 2020 in two-thirds of the EU countries, seems to have faded away.

Strongest political family in national polls (April 2021)

- EPP family (shaded: membership suspended)
- PES/S&D Family (Social Democrats, Socialists)
- ACRE/ECR Family (Eurosceptic Conservatives)
- ALDE + Renew Family (Liberals)
- Far-right populists (ID)
- Misc. populists
- GUE/NGL (far-left populists)
- The Greens/EFA
- Independents
- No parliamentary polls since the EP election

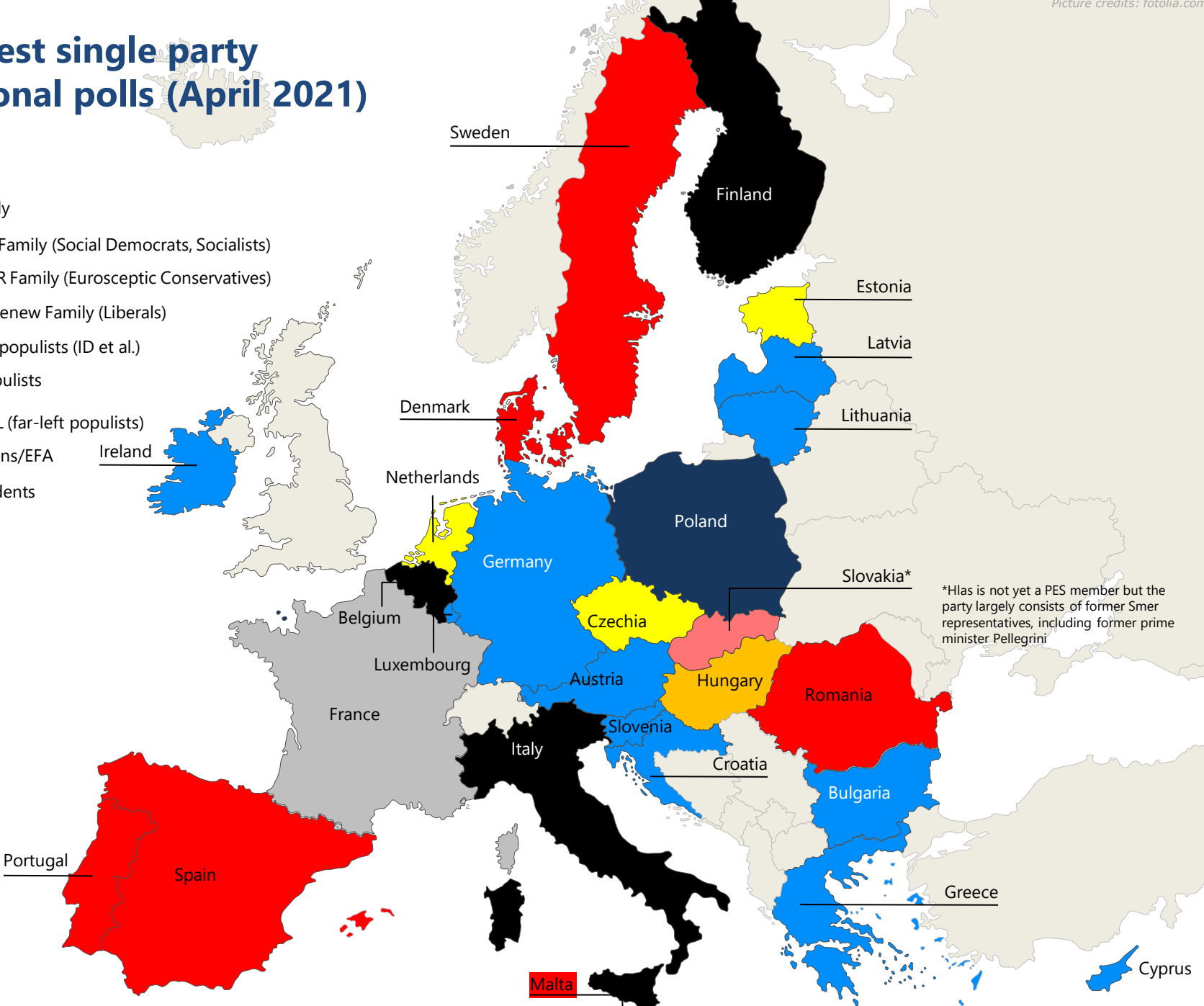


*Hlas is not yet a PES member but the party largely consists of former Smer representatives, including former prime minister Pellegrini

** In the Czech Republic, several parties take part in the election in the form of electoral alliances. If STAN (EPP group) is included in the EPP family, the EPP, at 22.5%, would be just ahead of ALDE, which belongs to ANO (22%)

Strongest single party in national polls (April 2021)

- EPP Family
- PES/S&D Family (Social Democrats, Socialists)
- ACRE/ECR Family (Eurosceptic Conservatives)
- ALDE + Renew Family (Liberals)
- Far-right populists (ID et al.)
- Misc. populists
- GUE/NGL (far-left populists)
- The Greens/EFA
- Independents

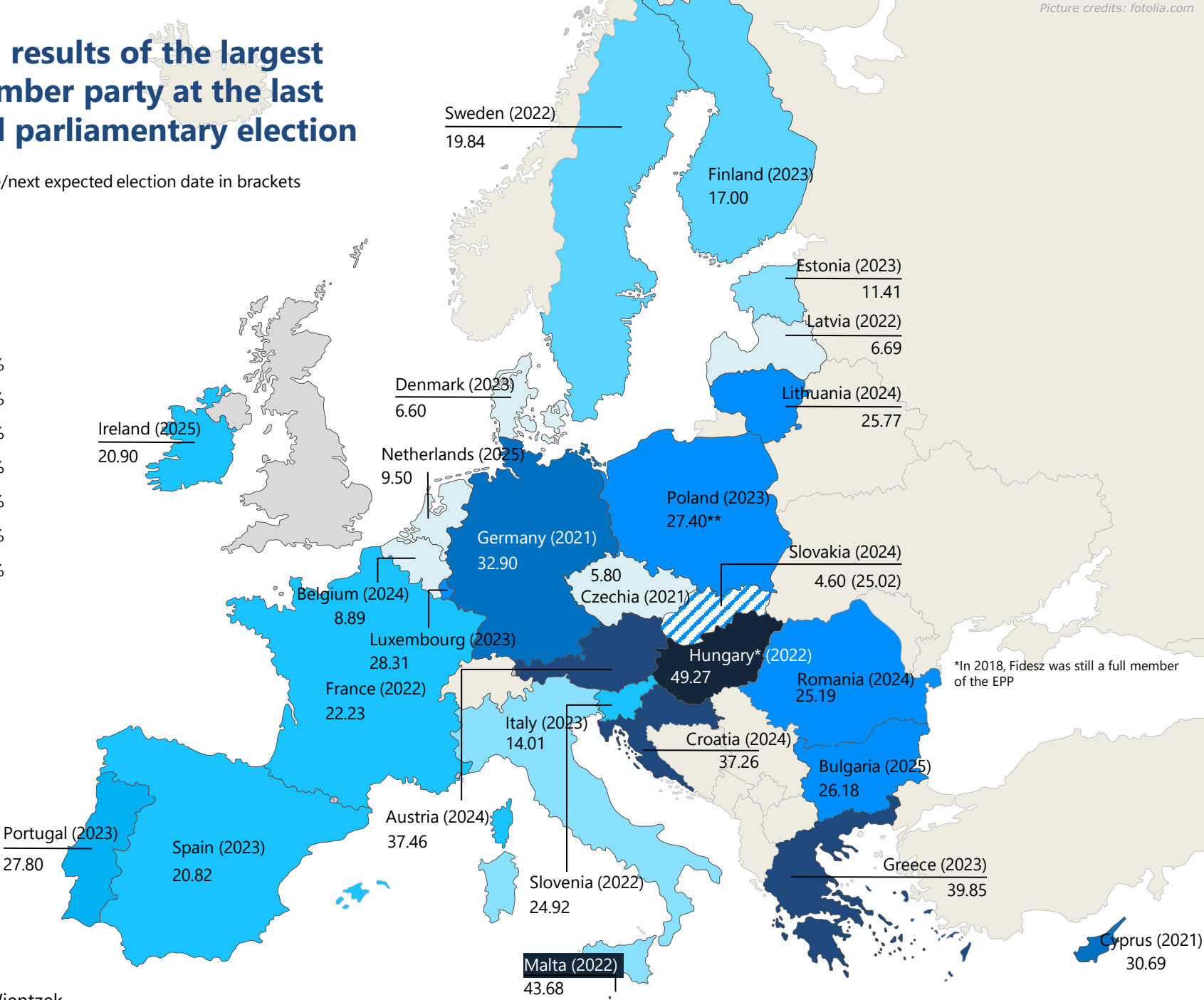
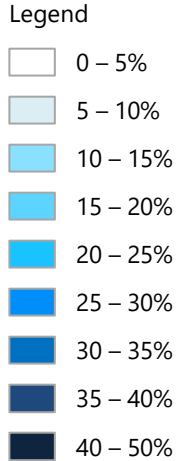


*Hlas is not yet a PES member but the party largely consists of former Smer representatives, including former prime minister Pellegrini

**Strength of the largest EPP
partner party in each country**

Election results of the largest EPP member party at the last national parliamentary election

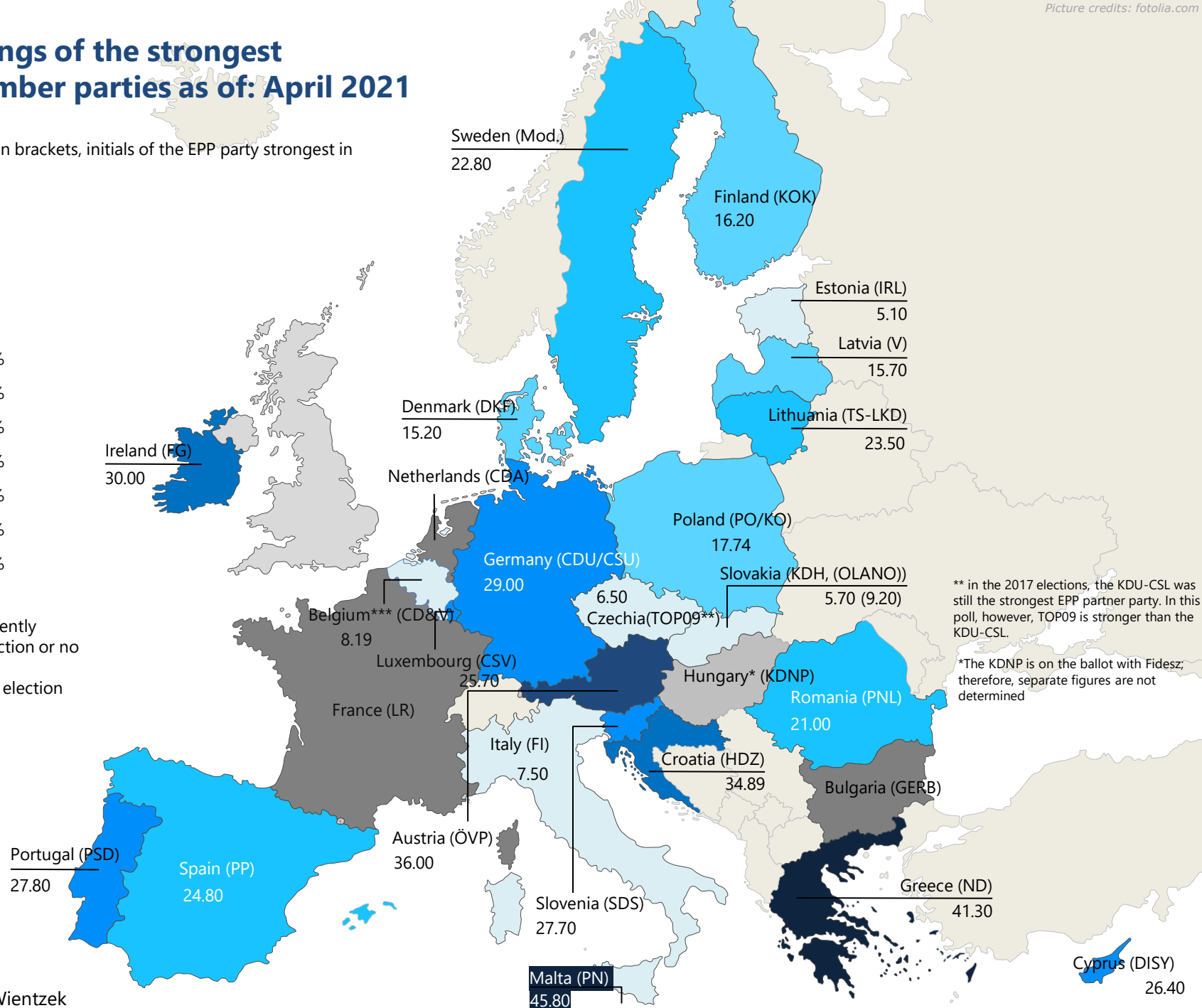
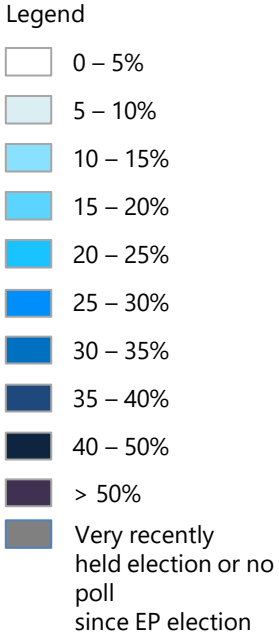
as a percentage/next expected election date in brackets



*In 2018, Fidesz was still a full member of the EPP

Poll ratings of the strongest EPP member parties as of: April 2021

in percentage; in brackets, initials of the EPP party strongest in the polls



** in the 2017 elections, the KDU-CSL was still the strongest EPP partner party. In this poll, however, TOP09 is stronger than the KDU-CSL.

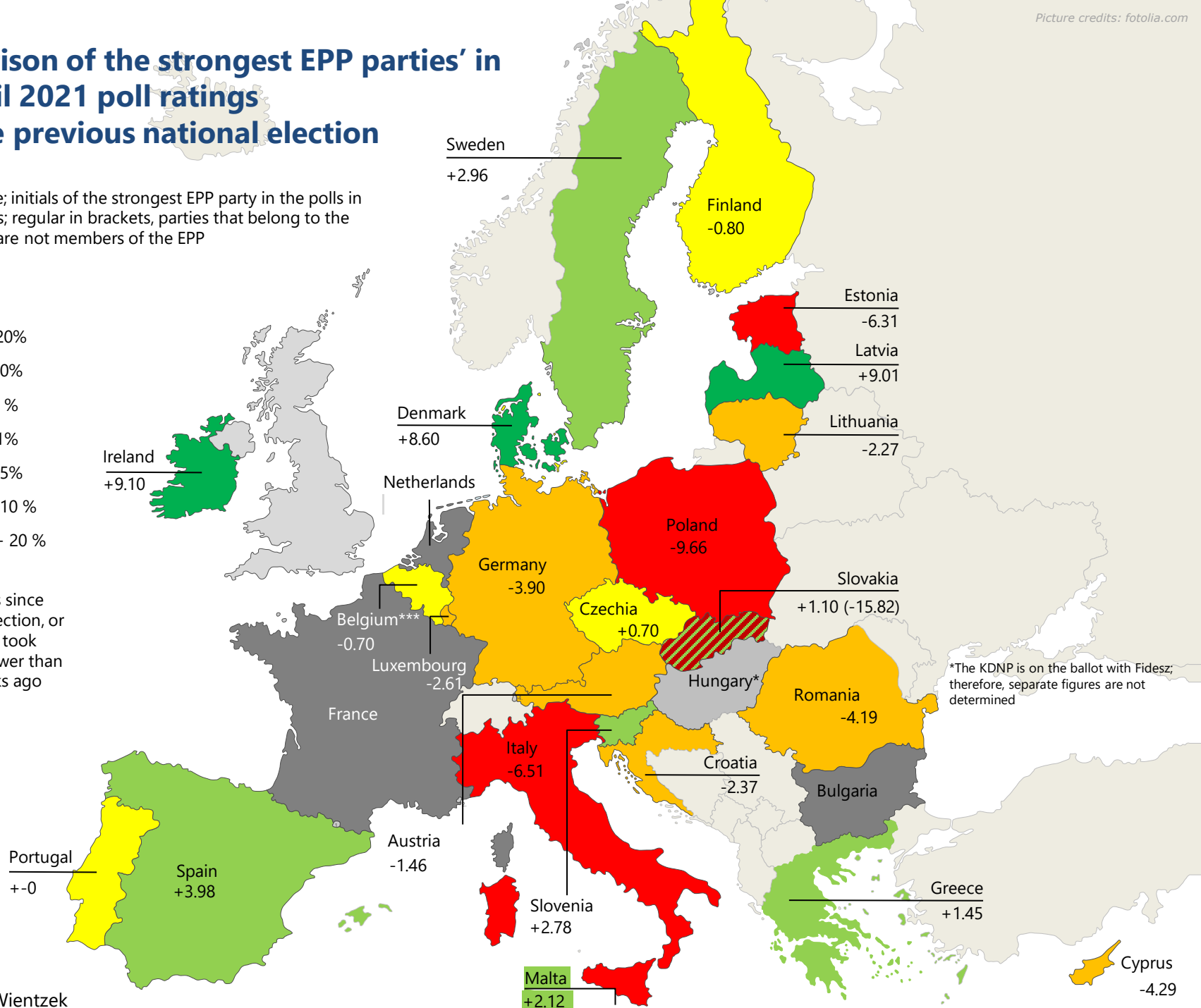
*The KDNP is on the ballot with Fidesz; therefore, separate figures are not determined

Comparison of the strongest EPP parties' in the April 2021 poll ratings with the previous national election

as a percentage; initials of the strongest EPP party in the polls in bold in brackets; regular in brackets, parties that belong to the EPP group but are not members of the EPP

Legend

- -10 to -20%
- -5 to -10%
- -1 to +5%
- +1 to +5%
- +5 to +10%
- +10 to +20%
- n.a. / No polls since election, or election took place fewer than six weeks ago

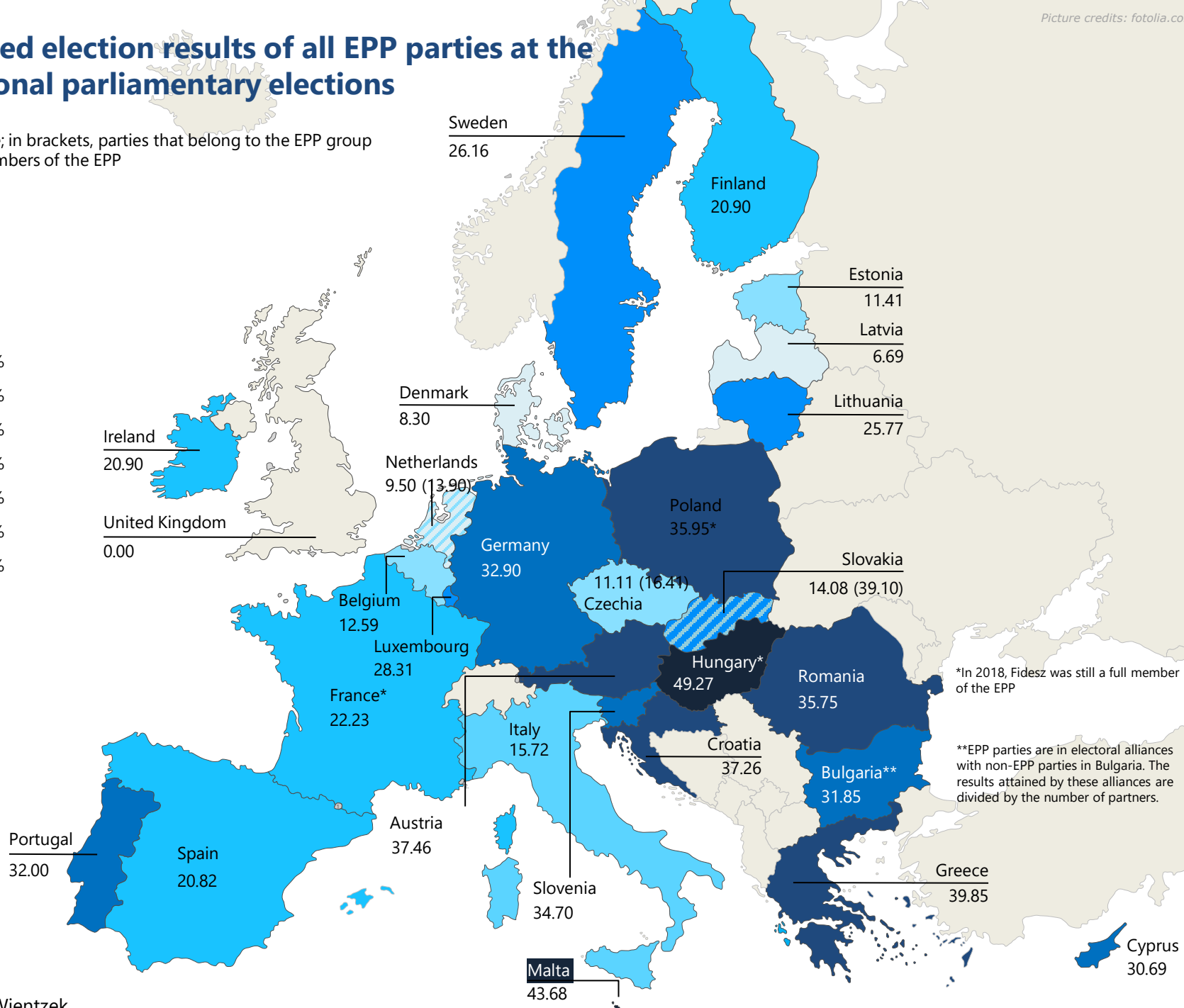
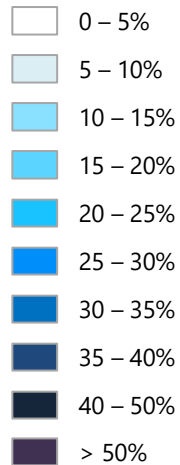


Strength of the EPP family in EU member states

Cumulated election results of all EPP parties at the last national parliamentary elections

as a percentage; in brackets, parties that belong to the EPP group but are not members of the EPP

Legend



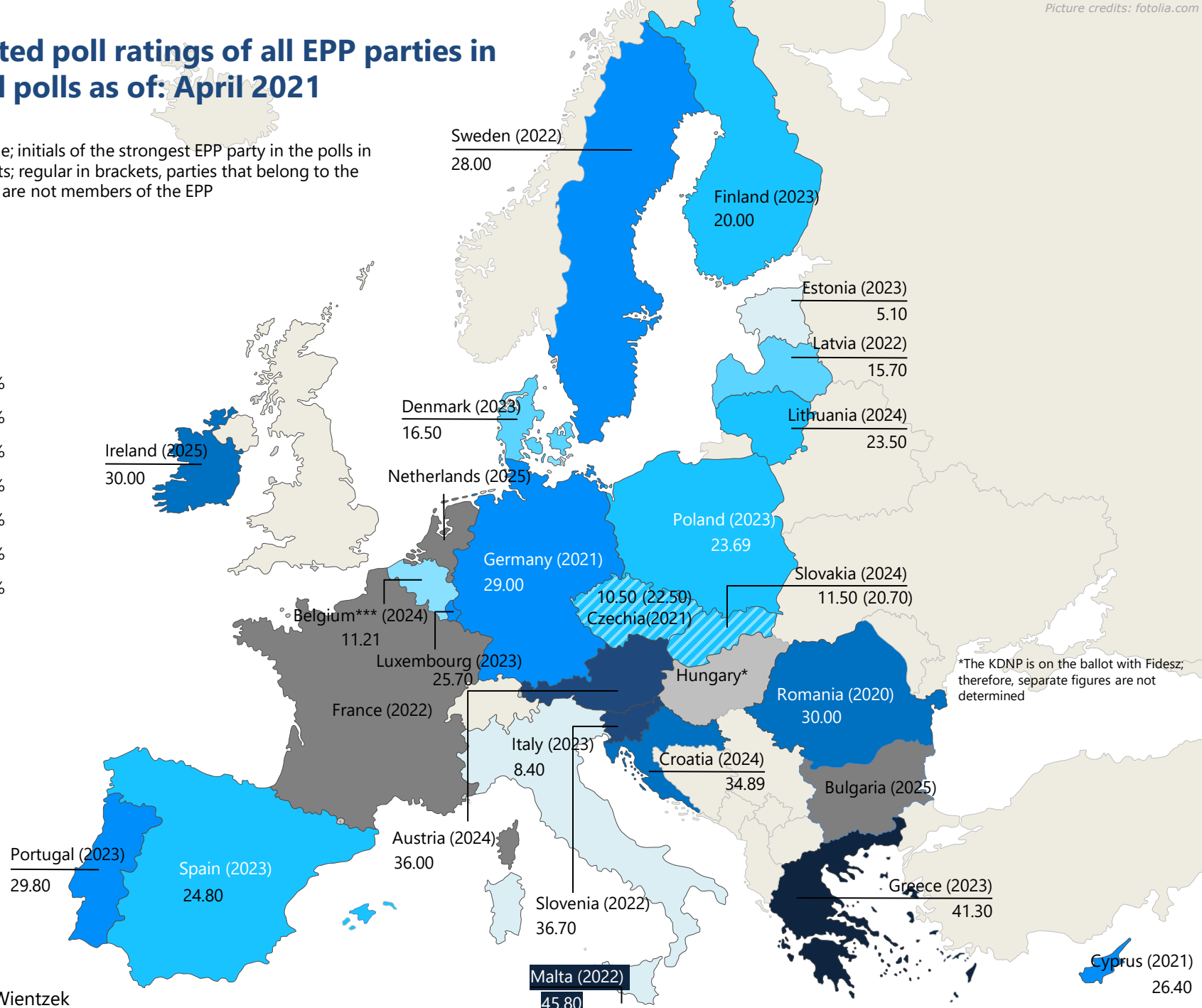
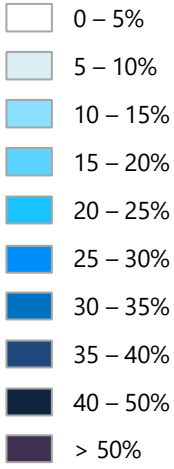
*In 2018, Fidesz was still a full member of the EPP

**EPP parties are in electoral alliances with non-EPP parties in Bulgaria. The results attained by these alliances are divided by the number of partners.

Cumulated poll ratings of all EPP parties in national polls as of: April 2021

as a percentage; initials of the strongest EPP party in the polls in bold in brackets; regular in brackets, parties that belong to the EPP group but are not members of the EPP

Legend



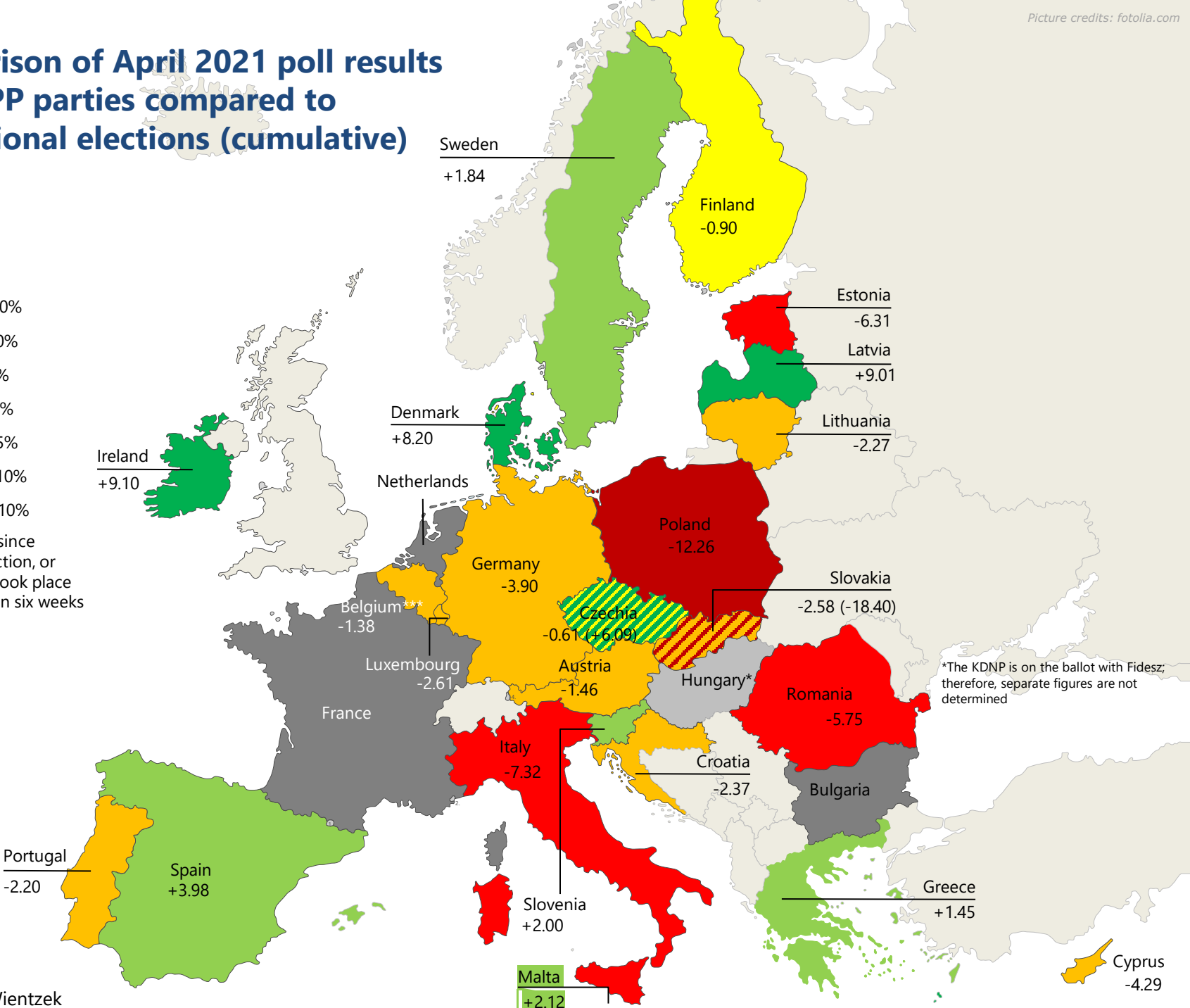
*The KDNP is on the ballot with Fidesz, therefore, separate figures are not determined

Comparison of April 2021 poll results of all EPP parties compared to last national elections (cumulative)

as a percentage

Legend

- 10 to -20%
- 5 to -10%
- 1 to -5%
- 1 to +1%
- +1 to +5%
- +5 to +10%
- Above +10%
- No polls since since election, or election took place fewer than six weeks ago





*The KDNP is on the ballot with Fidesz, therefore, separate figures are not determined


The EPP family's participation in government

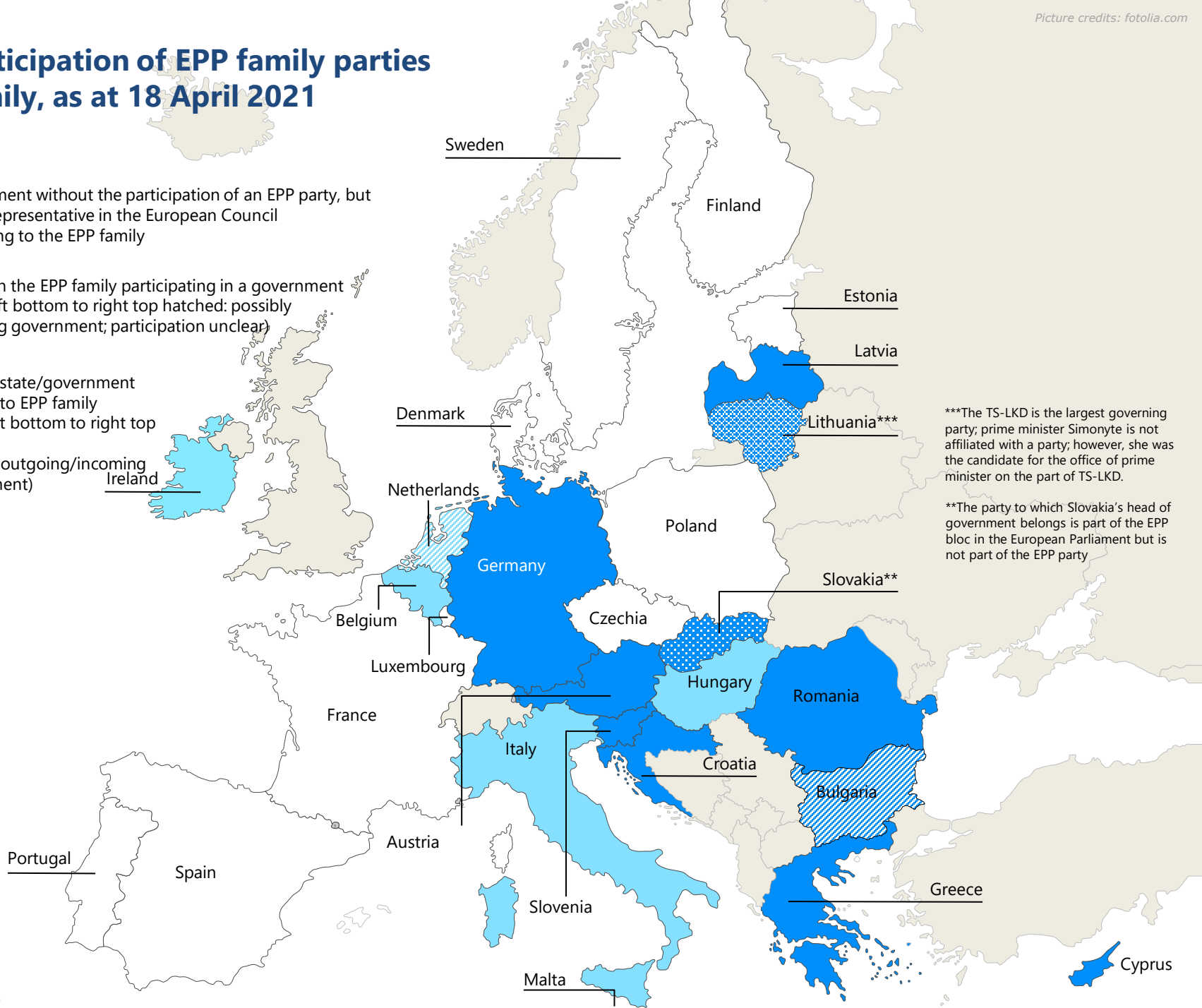
The participation of EPP family parties

EPP family, as at 18 April 2021

 Government without the participation of an EPP party, but with a representative in the European Council belonging to the EPP family

 Parties in the EPP family participating in a government (from left bottom to right top hatched: possibly outgoing government; participation unclear)

 Head of state/government belongs to EPP family (from left bottom to right top hatched: possibly outgoing/incoming government)



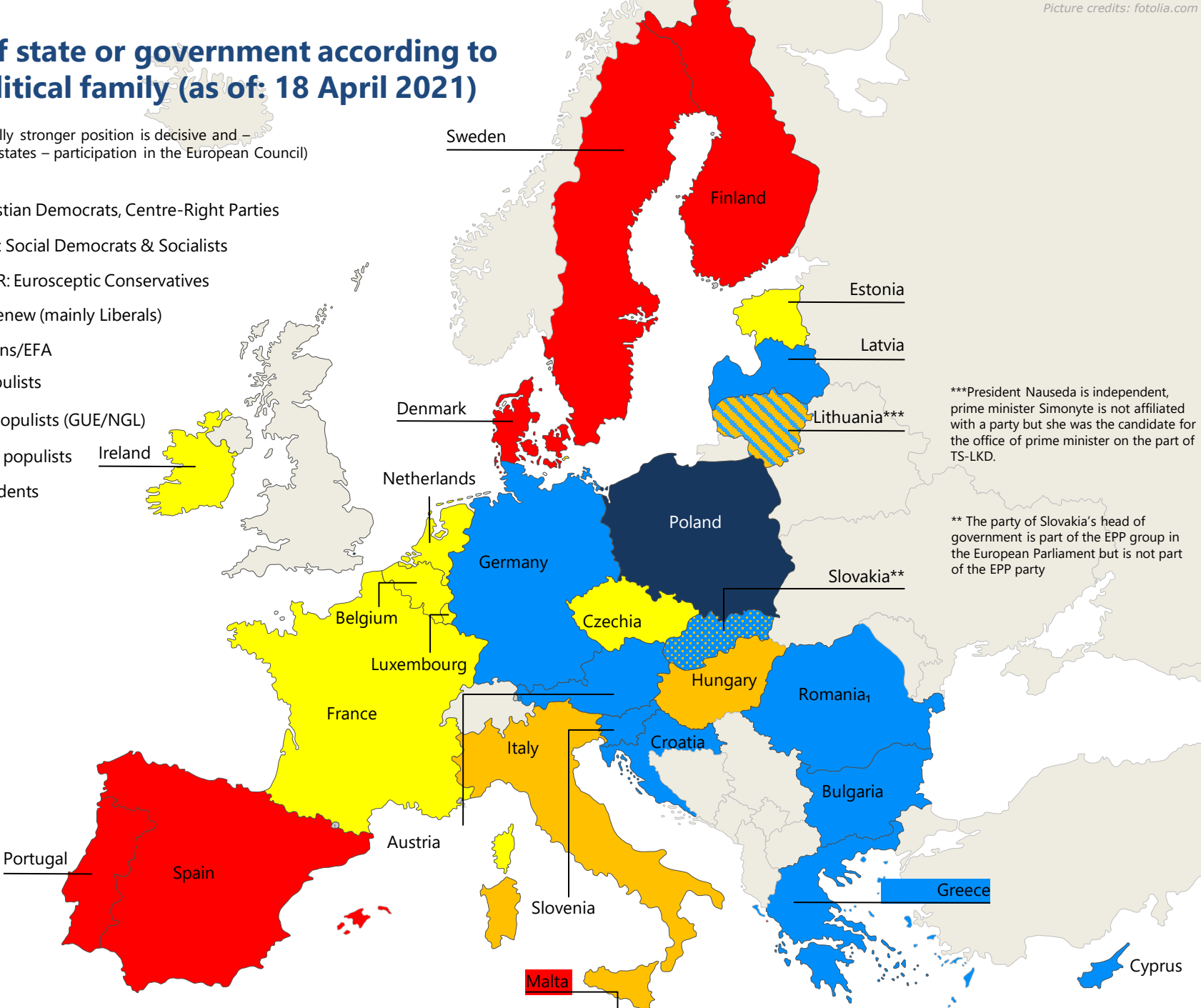
***The TS-LKD is the largest governing party; prime minister Simonyte is not affiliated with a party; however, she was the candidate for the office of prime minister on the part of TS-LKD.

**The party to which Slovakia's head of government belongs is part of the EPP bloc in the European Parliament but is not part of the EPP party

Heads of state or government according to their political family (as of: 18 April 2021)

(the constitutionally stronger position is decisive and – in the case of EU states – participation in the European Council)

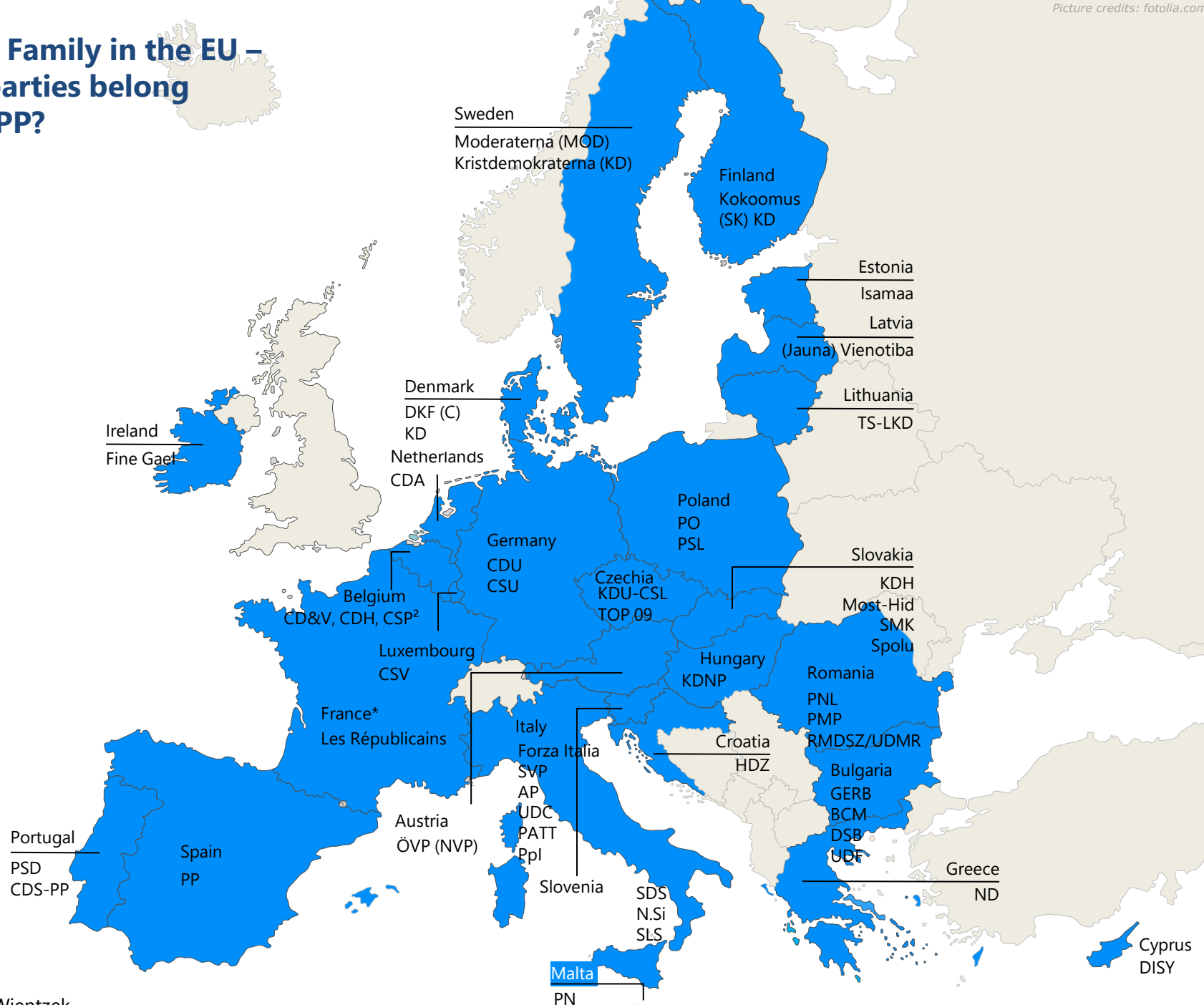
- EPP: Christian Democrats, Centre-Right Parties
- PES/S&D: Social Democrats & Socialists
- ACRE/ECR: Eurosceptic Conservatives
- ALDE +Renew (mainly Liberals)
- The Greens/EFA
- Misc. populists
- Far-left populists (GUE/NGL)
- Far-right populists
- Independents



***President Nausėda is independent, prime minister Simonyte is not affiliated with a party but she was the candidate for the office of prime minister on the part of TS-LKD.

** The party of Slovakia's head of government is part of the EPP group in the European Parliament but is not part of the EPP party

The EPP Family in the EU – Which parties belong to the EPP?



Notes

* In Poland, the two EPP parties each led alliances that also included non-EPP parties.

**In France, no polls for national parliamentary elections have been done since the elections in June 2017. The results refer to the second round of parliamentary elections.

In order to obtain an adequate result at national level, these results were each weighted according to the number of eligible voters (there is compulsory voting). Despite compulsory voting and the relatively similar number of voters at elections in the different regions, small deviations may occur. In Belgium, the CD&V, CSP and CDH partner parties only compete regionally. The results in the individual regions are weighted accordingly. The CSP only competes in European elections. At national elections, it is a part of the CDH since the Belgian parliament is composed according to regions (Flanders, Wallonia, Brussels) and not according to language community. In Luxembourg, polls are conducted regionally. The results are weighted according to the number of voters (there is compulsory voting) in order to calculate a party's national strength. Despite compulsory voting and the relatively similar number of voters at elections in the different regions, small deviations may occur.

Further notes:

In several countries (including Slovenia, Bulgaria and Latvia), undecided and non-voters are included as part of the total sum (100%) in the polls. The poll results are extrapolated accordingly. Example: Party A has 13% in the polls. 30% of respondents will not vote, and 20% of the respondents are undecided. Accordingly, support for Party A is reported to be 26%.

In **Germany**, the CDU and CSU are not listed as two separate parties owing to the fact they form a single parliamentary bloc and that their poll results are always added together.

In several countries, parties are part of the EPP bloc without belonging to the EPP. Some of them even belong to other party families, for example, CU and 50 Plus in the Netherlands, STAN in Czech Republic and Olano in Slovakia. Their respective results are given in brackets.

Some of the parties in the ACRE family are right-wing populist or have strong right-wing populist elements. As the ACRE family is now (or is for the time being) a mainstream party family, the parties belonging to it are listed as part of the ACRE family and not as "right-wing populist". By contrast, the "right-wing populist" category contains parties belonging to the ENF or the EFDD Group in the European Parliament, as well as other right-wing populist or right-wing extremist forces.

1. Slide 16: The list usually refers to the heads of government. Heads of State (in the case of a government of a different party) are only indicated (separately) if they are represented in the European Council (the case of Johannis in Romania). In the case of France, no participation of the EPP in the government is indicated since the official EPP party LR is not in the government.
2. Slide 18: The CSP is not a member of the EPP but is part of the EPP group.

Sources for polls:

Ipsos (Belgium), Trend (Belgium), Voxmeter (Denmark) Emnid (Germany) Norstat (Estonia), Kantar TNS (Finland), IfoP (France), Pulse/RC (Greece), RedC (Ireland), EMG (Italy), Ipsos (Croatia), Factum (Latvia), Spinter tymai (Lithuania), Sondesfro (Luxembourg), Malta Today (Malta), Ipsos (Netherlands) RA (Austria), Ibris for Rzeczpospolita (Poland), eurosondagem (Portugal), CURS (Romania), Demoskop (Sweden), Focus (Slovakia), Mediana (Slovenia), NC Report (Spain), Kantar (Czech Republic), Zavecz (Hungary), Symmetron (Cyprus)

Contact person

Dr. Olaf Wientzek

Email: olaf.wientzek@kas.de / olwien@hotmail.com