

EPP Party Barometer May 2021

The Situation of the European People's Party in the EU

prepared by
Dr. Olaf Wientzek

Summary and latest developments

- The EPP family has come out as **the strongest political family in polls in 13 countries**; the Party of European Socialists (PES) in 5 (if you add Slovakia's Hlas, which is not yet officially a PES member); Liberals/Renew in 2; far-right populists (ID) in Italy and Finland; the Eurosceptic/national conservative ECR in Poland. In Hungary and Latvia (combined), independent parties are front-running. If you take the polls on the presidential candidates in France as a benchmark, right-wing populists and Liberals/Renew are running neck and neck. In Czechia, several parties compete in electoral alliances. If STAN (EPP group but not EPP party) is counted as part of the EPP family, the EPP, at 21 %, would be just ahead of ANO (20%), which is part of ALDE.
- The picture is similar if we look at the strongest single party and not the largest party family: Then the **EPP is ahead in 12 countries**; the Socialists in 6; the Liberals in 3; far-right populists (ID) in 3; the ECR in one country; Fidesz is in the lead in Hungary. In France, ID and Renew are even with each other.
- 8 of the 27 heads of state and government in the European Council are currently members of the EPP family (9 of 27 if you count the Slovak prime minister, whose party is a part of the EPP group but not the EPP party); 7 heads of state and government are members of the Liberals/Renew; 6 of the Social Democrats/Socialists; one the Eurosceptic conservatives; 4 are formally independent.
- The seemingly clear picture belies the fact that in many countries the **winning margin of the leading party family (in many cases, the EPP) is extremely narrow** (especially in Germany, Belgium, Latvia, Lithuania, Ireland, Italy, Finland, Sweden, Spain, Cyprus), thus within the margin of error; with other polling agencies, other party families are ahead (Germany, Latvia, Ireland, Romania).

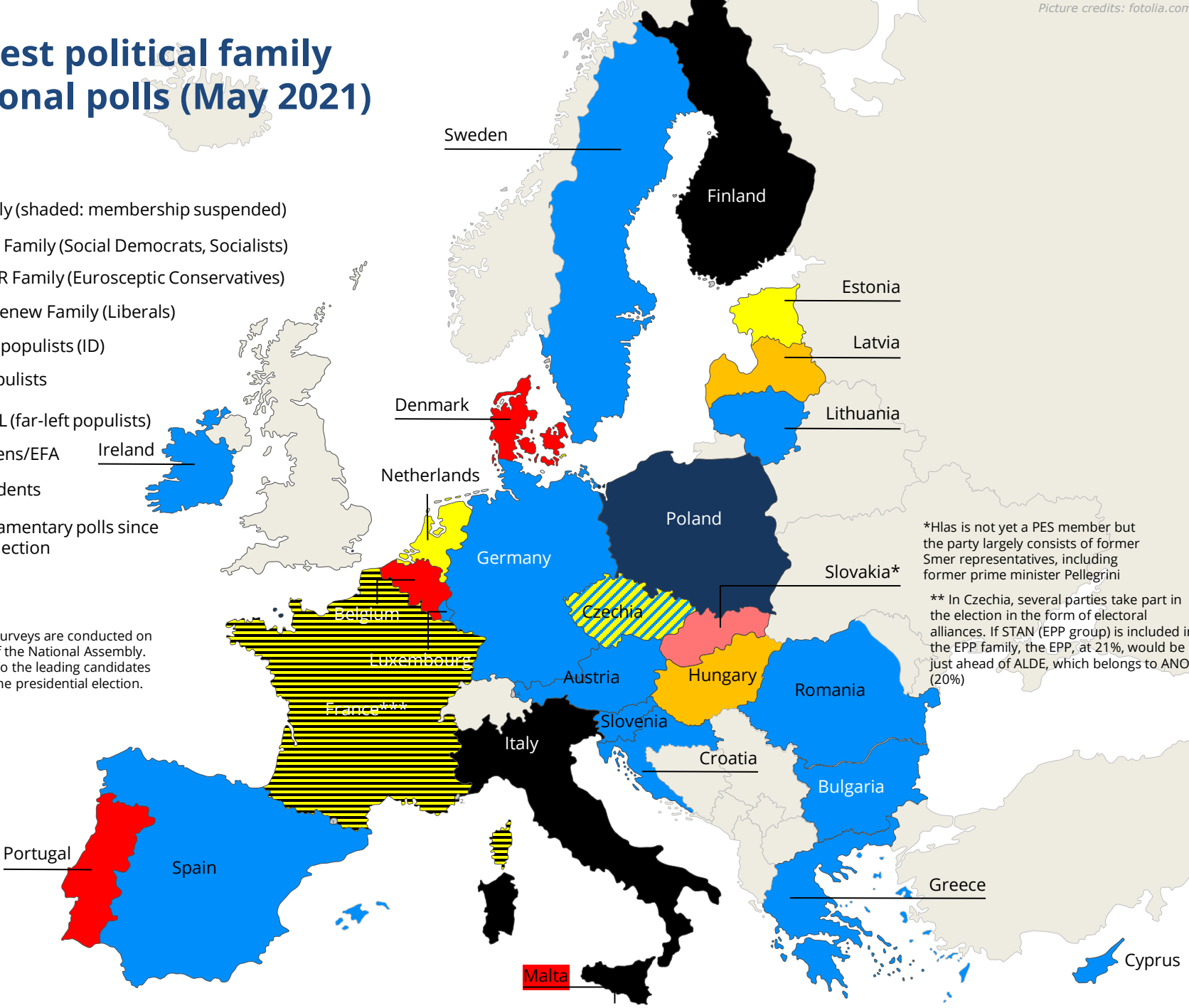
Strongest political family in national polls (May 2021)

- EPP family (shaded: membership suspended)
- PES/S&D Family (Social Democrats, Socialists)
- ACRE/ECR Family (Eurosceptic Conservatives)
- ALDE + Renew Family (Liberals)
- Far-right populists (ID)
- Misc. populists
- GUE/NGL (far-left populists)
- The Greens/EFA
- Independents
- No parliamentary polls since the EP election

*** In France, no surveys are conducted on the composition of the National Assembly. The figures relate to the leading candidates of the parties for the presidential election.

*Hlas is not yet a PES member but the party largely consists of former Smer representatives, including former prime minister Pellegrini

** In Czechia, several parties take part in the election in the form of electoral alliances. If STAN (EPP group) is included in the EPP family, the EPP, at 21%, would be just ahead of ALDE, which belongs to ANO (20%)

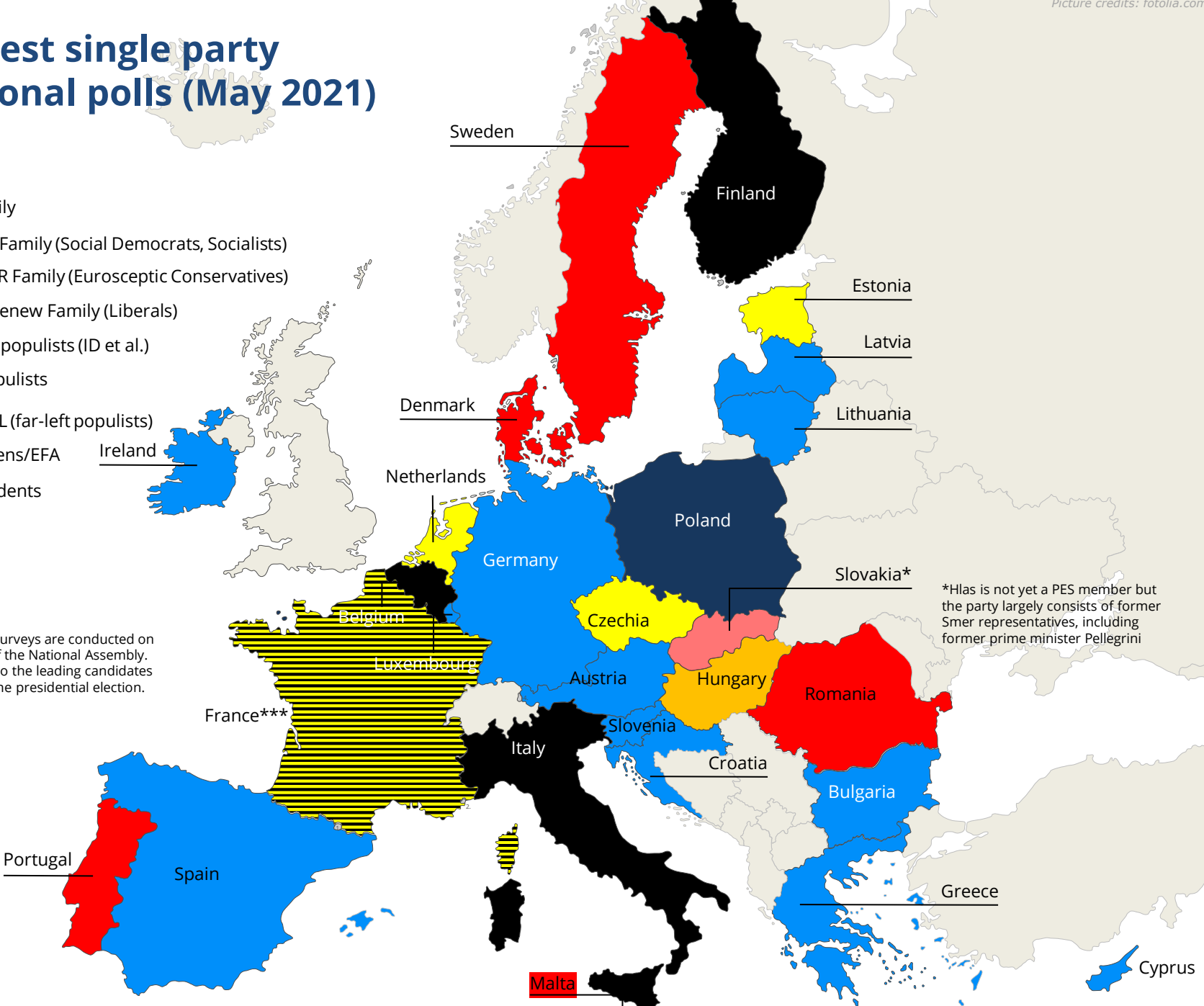


Strongest single party in national polls (May 2021)

- EPP Family
- PES/S&D Family (Social Democrats, Socialists)
- ACRE/ECR Family (Eurosceptic Conservatives)
- ALDE + Renew Family (Liberals)
- Far-right populists (ID et al.)
- Misc. populists
- GUE/NGL (far-left populists)
- The Greens/EFA
- Independents

*** In France, no surveys are conducted on the composition of the National Assembly. The figures relate to the leading candidates of the parties for the presidential election.

*Hlas is not yet a PES member but the party largely consists of former Smer representatives, including former prime minister Pellegrini

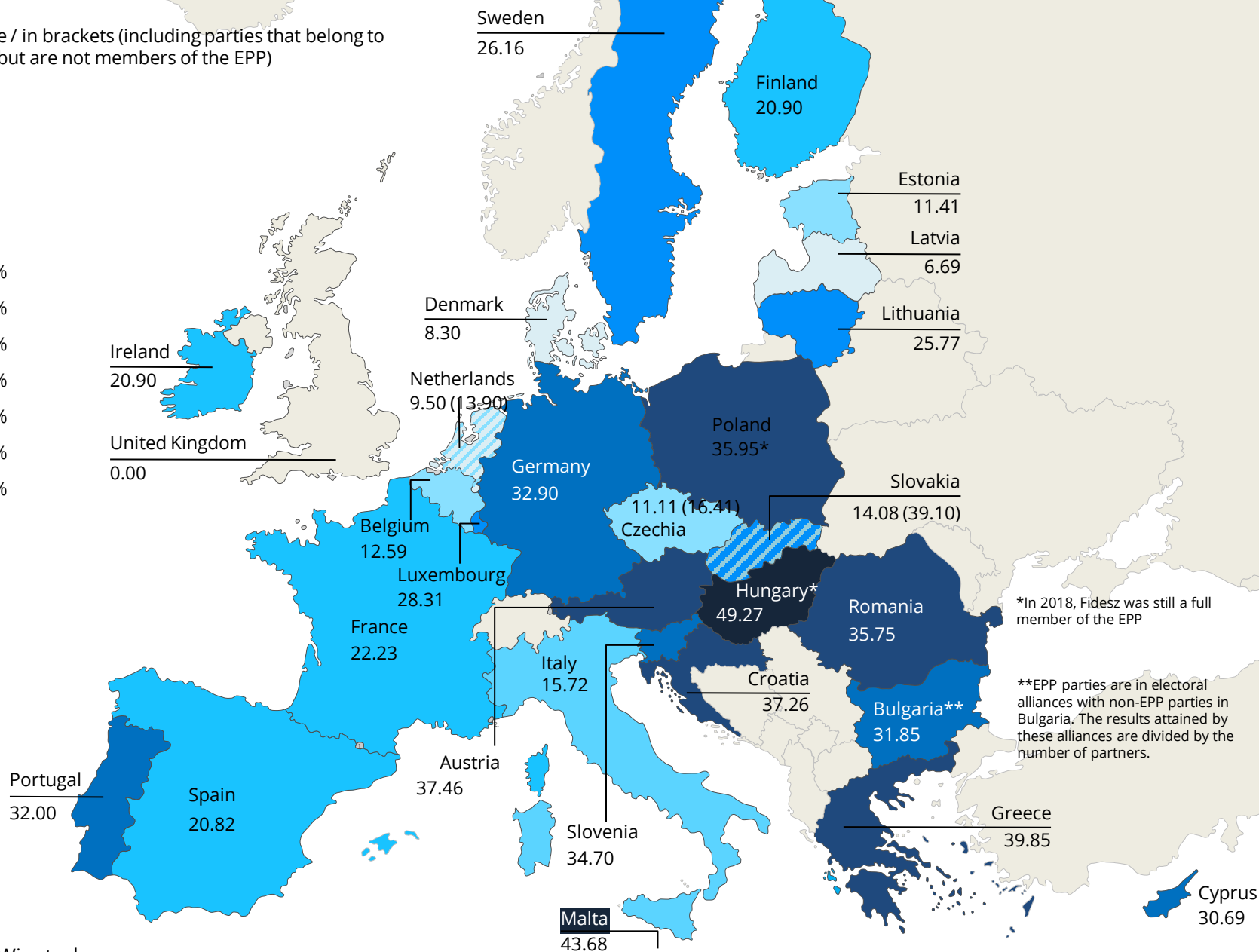
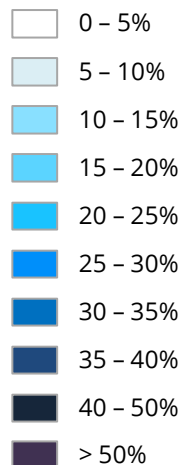


Strength of the EPP family in EU member states

Cumulated election results of all EPP parties in the last national parliamentary elections

as a percentage / in brackets (including parties that belong to the EPP group but are not members of the EPP)

Legend

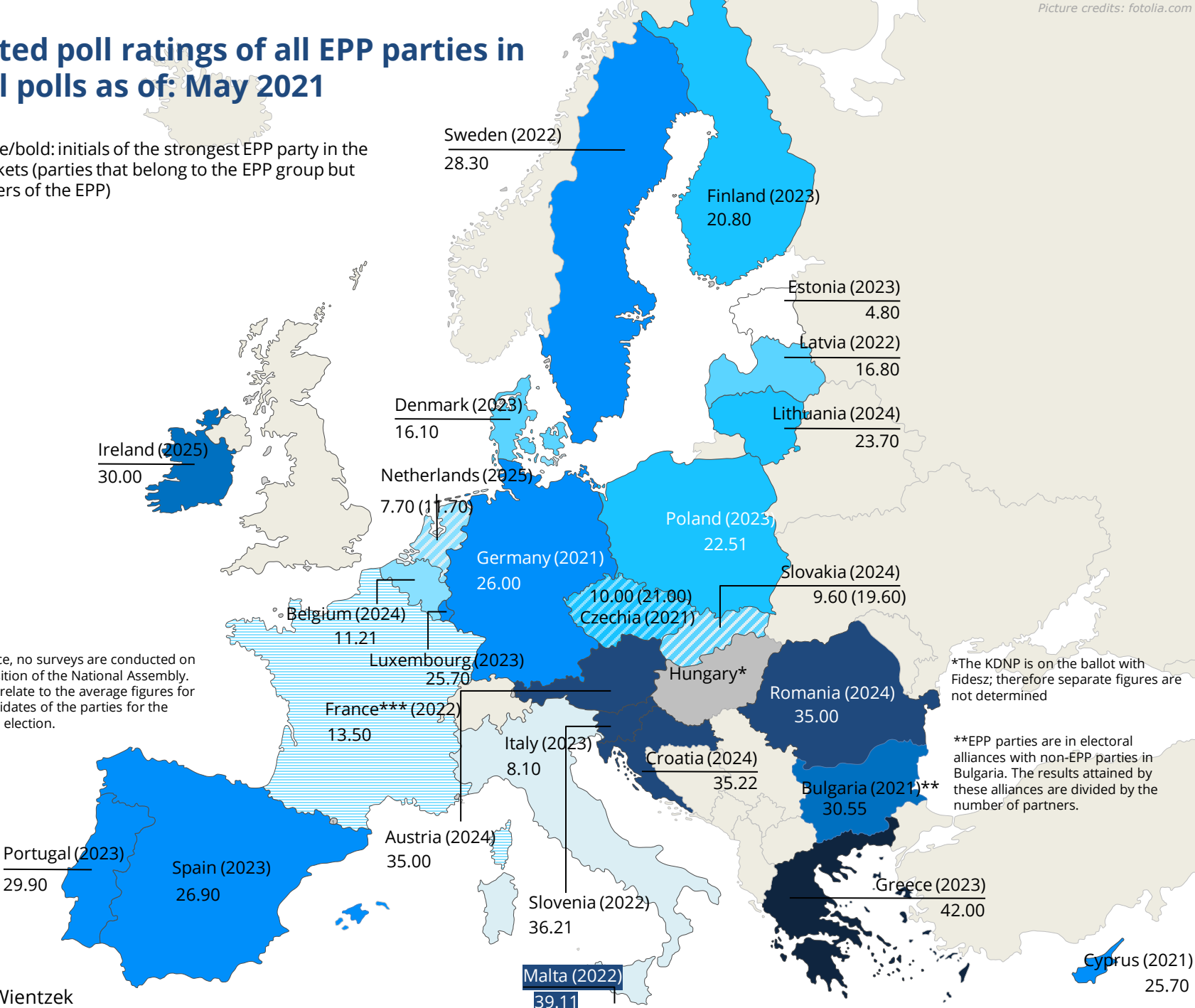
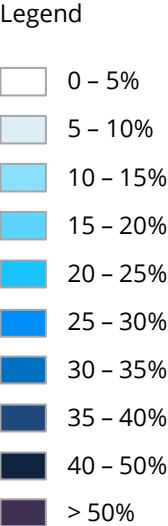


*In 2018, Fidesz was still a full member of the EPP

**EPP parties are in electoral alliances with non-EPP parties in Bulgaria. The results attained by these alliances are divided by the number of partners.

Cumulated poll ratings of all EPP parties in national polls as of: May 2021

as a percentage/**bold**: initials of the strongest EPP party in the polls // in brackets (parties that belong to the EPP group but are not members of the EPP)



*** In France, no surveys are conducted on the composition of the National Assembly. The figures relate to the average figures for the LR candidates of the parties for the presidential election.

*The KDNP is on the ballot with Fidesz; therefore separate figures are not determined

**EPP parties are in electoral alliances with non-EPP parties in Bulgaria. The results attained by these alliances are divided by the number of partners.

Comparison of May 2021 poll results of all EPP parties compared to last national elections (cumulative)

as a percentage

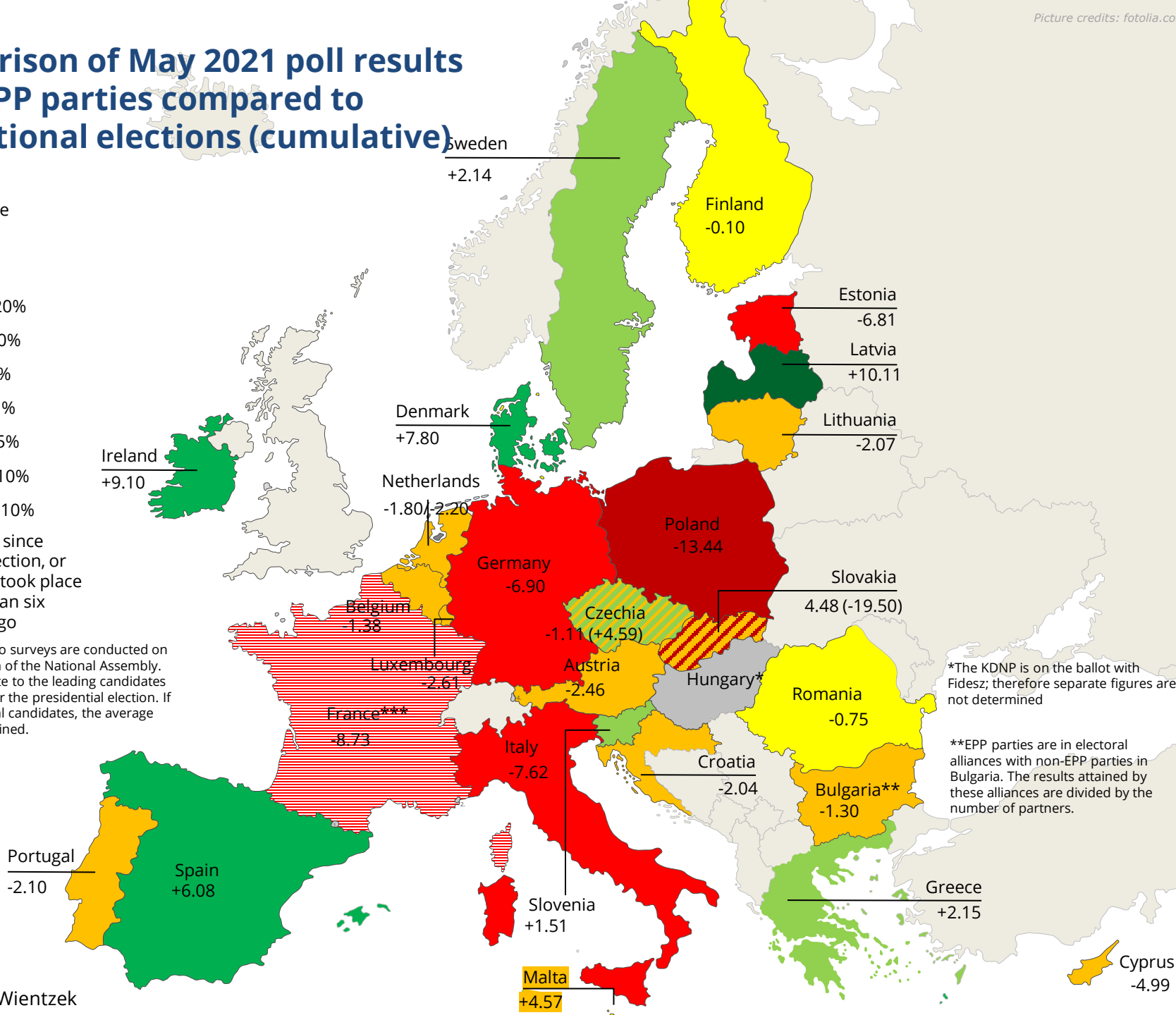
Legend

- -10 to -20%
- -5 to -10%
- -1 to -5%
- -1 to +1%
- +1 to +5%
- +5 to +10%
- Above +10%
- No polls since election, or election took place fewer than six weeks ago

*** In France, no surveys are conducted on the composition of the National Assembly. The figures relate to the leading candidates of the parties for the presidential election. If there are several candidates, the average figure is determined.

*The KDNP is on the ballot with Fidesz; therefore separate figures are not determined

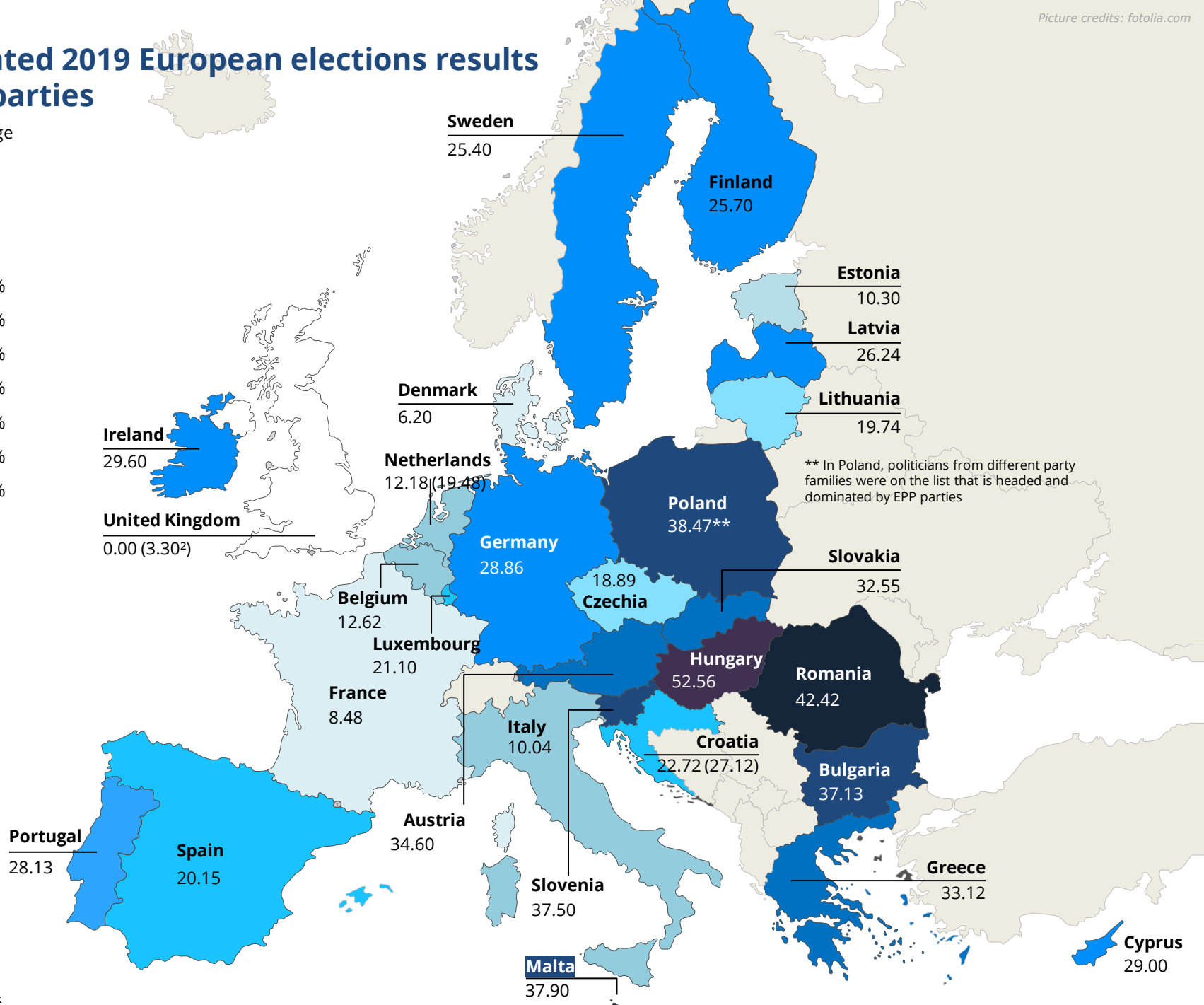
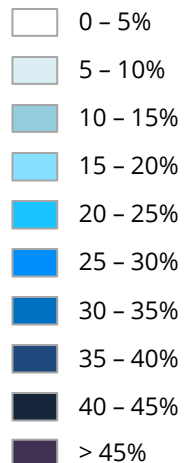
**EPP parties are in electoral alliances with non-EPP parties in Bulgaria. The results attained by these alliances are divided by the number of partners.



Cumulated 2019 European elections results of EPP parties

as a percentage

Legend



Comparison of May 2021 poll results off all parties in the PPE group compared to EP elections (cumulative)

as a percentage

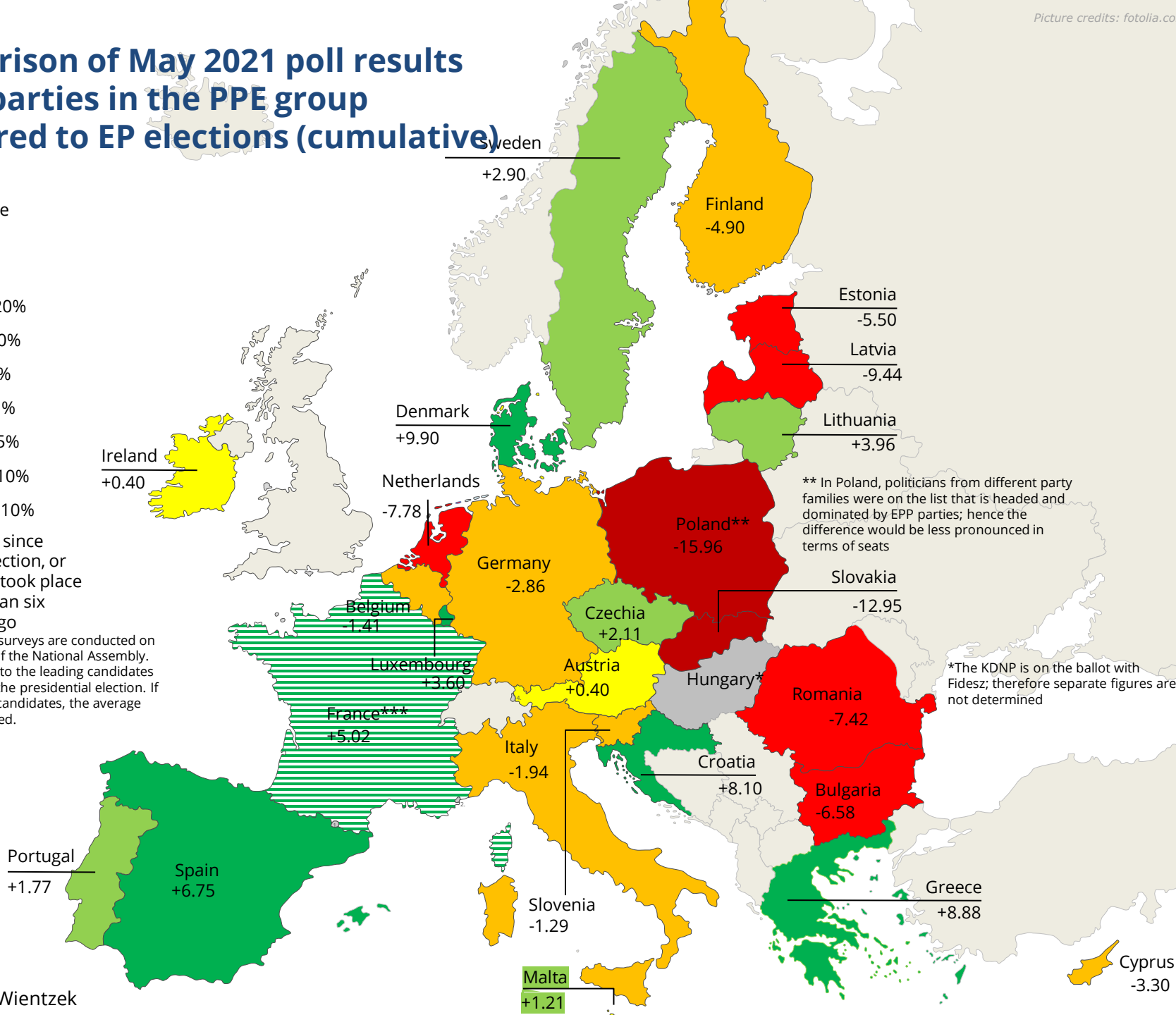
Legend

- 10 to -20%
- 5 to -10%
- 1 to -5%
- 1 to +1%
- +1 to +5%
- +5 to +10%
- Above +10%
- No polls since election, or election took place fewer than six weeks ago

*** In France, no surveys are conducted on the composition of the National Assembly. The figures relate to the leading candidates of the parties for the presidential election. If there are several candidates, the average figure is determined.

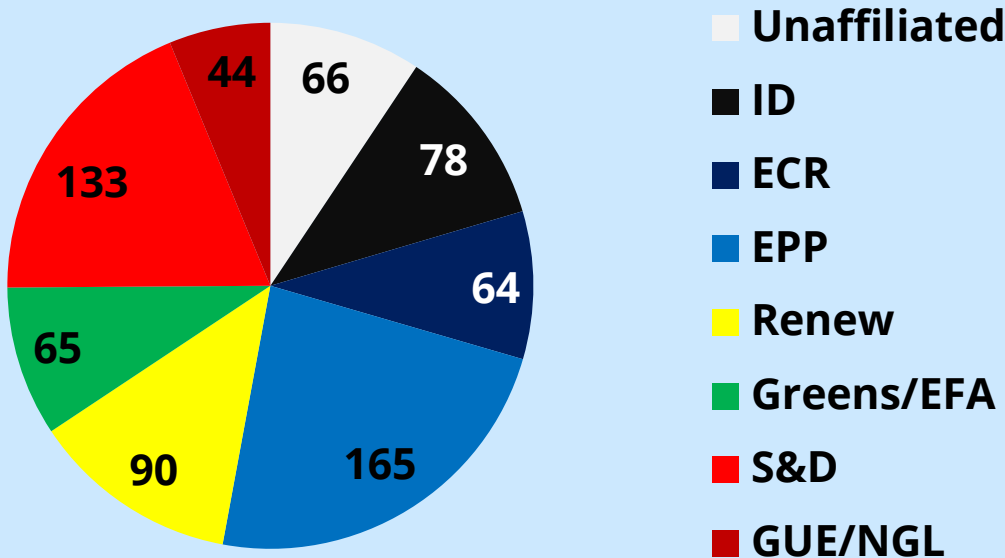
** In Poland, politicians from different party families were on the list that is headed and dominated by EPP parties; hence the difference would be less pronounced in terms of seats

*The KDNP is on the ballot with Fidesz; therefore separate figures are not determined



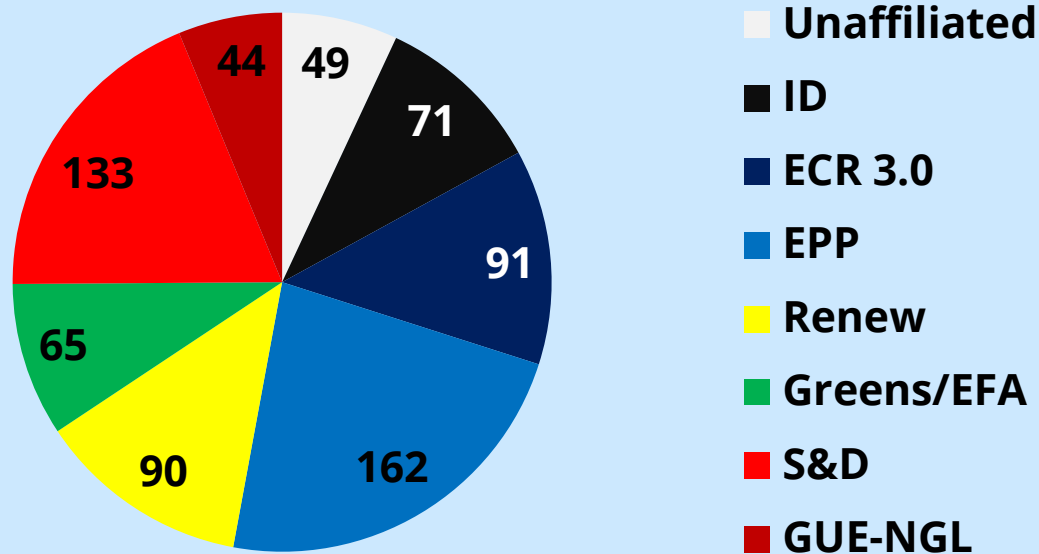
Scenarios for the EP

Scenario 1: The landscape of political groups in the EP remains unchanged



- **Note:** One must be cautious when transferring the results of national polls to the EP elections since other empirical data from previous EP elections (election turnout, popularity of a party in terms of European policies vs. national popularity of a party, etc.) are included in the calculation.
- Despite the departure of Fidesz, the EPP remains the strongest force, albeit with slight losses (165 instead of 178 MEPs).
- The losses are primarily (but not exclusively) due to the weaker polls in Poland and Germany in comparison with the EP elections – possible gains in France and Spain can compensate for it only to a limited extent.
- All in all, the number of seats for the EPP would be in the range of 154 to 174 mandates.

Scenario 2: Fidesz, Lega, PiS form a new alliance (“ECR 3.0”)





- Scenario: A new alliance between Lega, Fidesz and PiS absorbs parties from ID, members without any parliamentary faction and a few from the EPP. RN and FPÖ would not be part of the new formation.
- **Note:** One must be cautious when transferring the results of national polls to the EP elections since other empirical data from previous EP elections (election turnout, popularity of a party in terms of European policies vs. national popularity of a party, etc.) are included in the calculation.
- The rivalries in the camp of right-wing parties (currently) hamper the creation of a larger joint formation that could become the second-strongest force (Lega vs. Fdl in Italy; AfD out of the question as a partner for many in the ECR; N-VA vs. VB in Belgium; Romanian AUR not to be in one faction with Fidesz)
- ECR and ID together would have approximately the potential of the EPP group.
- A new situation would arise if the ECR’s reservations about RN were to be overcome.
- This scenario does not assume that there will be a flight of moderate parties toward the centre.


The EPP family's participation in government

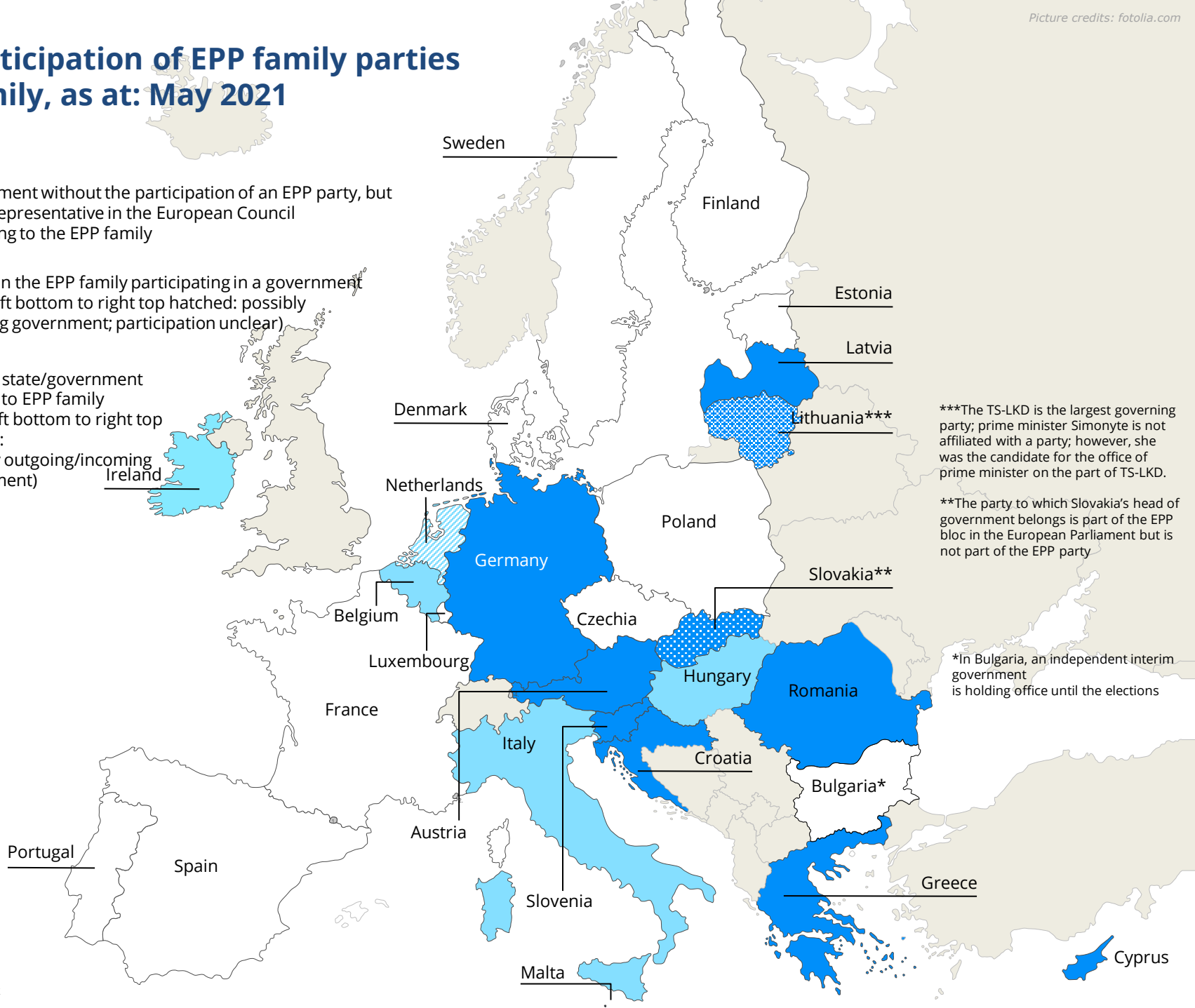
The participation of EPP family parties

EPP family, as at: May 2021

 Government without the participation of an EPP party, but with a representative in the European Council belonging to the EPP family

 Parties in the EPP family participating in a government (from left bottom to right top hatched: possibly outgoing government; participation unclear)

 Head of state/government belongs to EPP family (from left bottom to right top hatched: possibly outgoing/incoming government)



***The TS-LKD is the largest governing party; prime minister Simonyte is not affiliated with a party; however, she was the candidate for the office of prime minister on the part of TS-LKD.

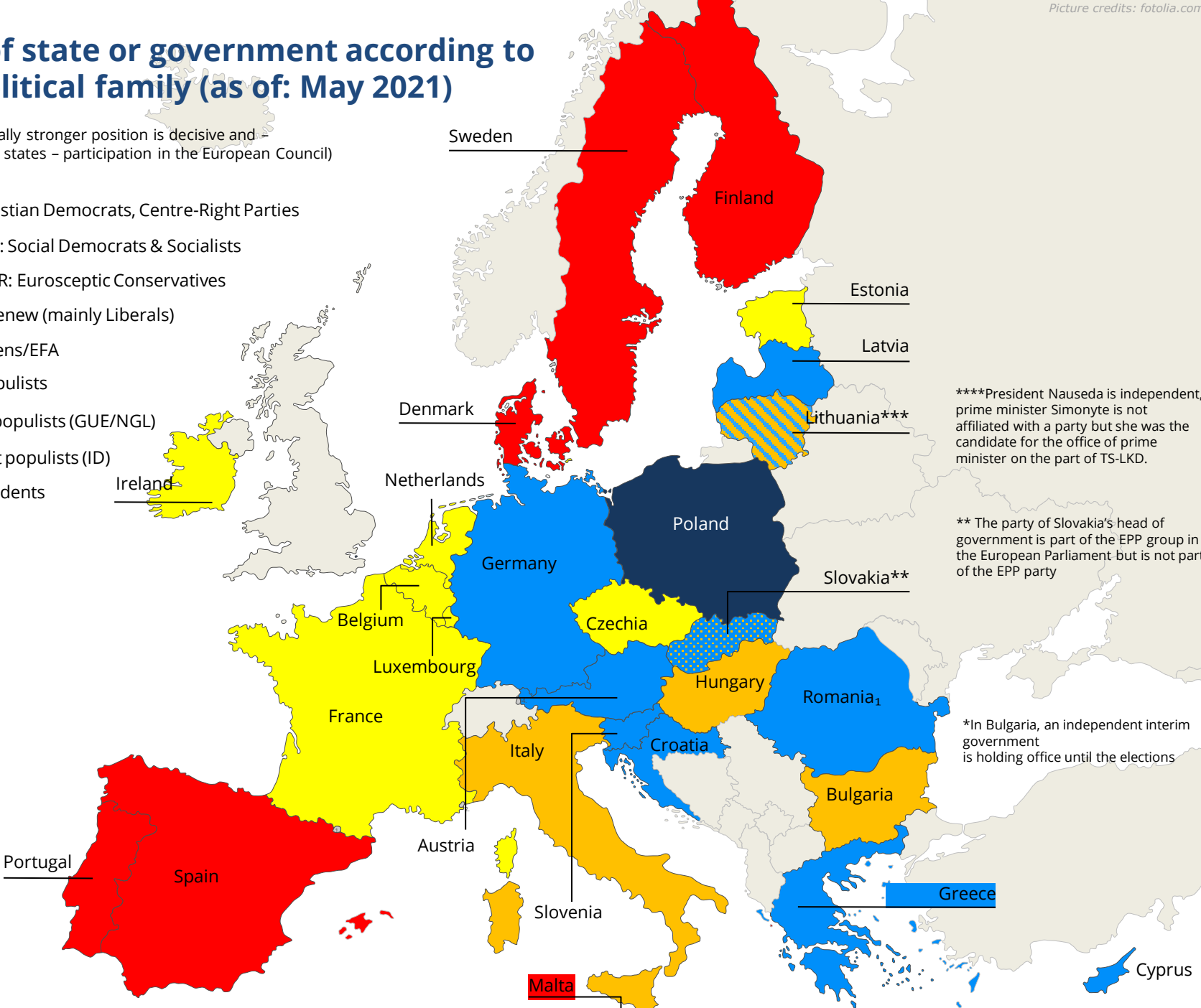
**The party to which Slovakia's head of government belongs is part of the EPP bloc in the European Parliament but is not part of the EPP party

*In Bulgaria, an independent interim government is holding office until the elections

Heads of state or government according to their political family (as of: May 2021)

(the constitutionally stronger position is decisive and - in the case of EU states - participation in the European Council)

- EPP: Christian Democrats, Centre-Right Parties
- PES/S&D: Social Democrats & Socialists
- ACRE/ECR: Eurosceptic Conservatives
- ALDE +Renew (mainly Liberals)
- The Greens/EFA
- Misc. populists
- Far-left populists (GUE/NGL)
- Far-right populists (ID)
- Independents

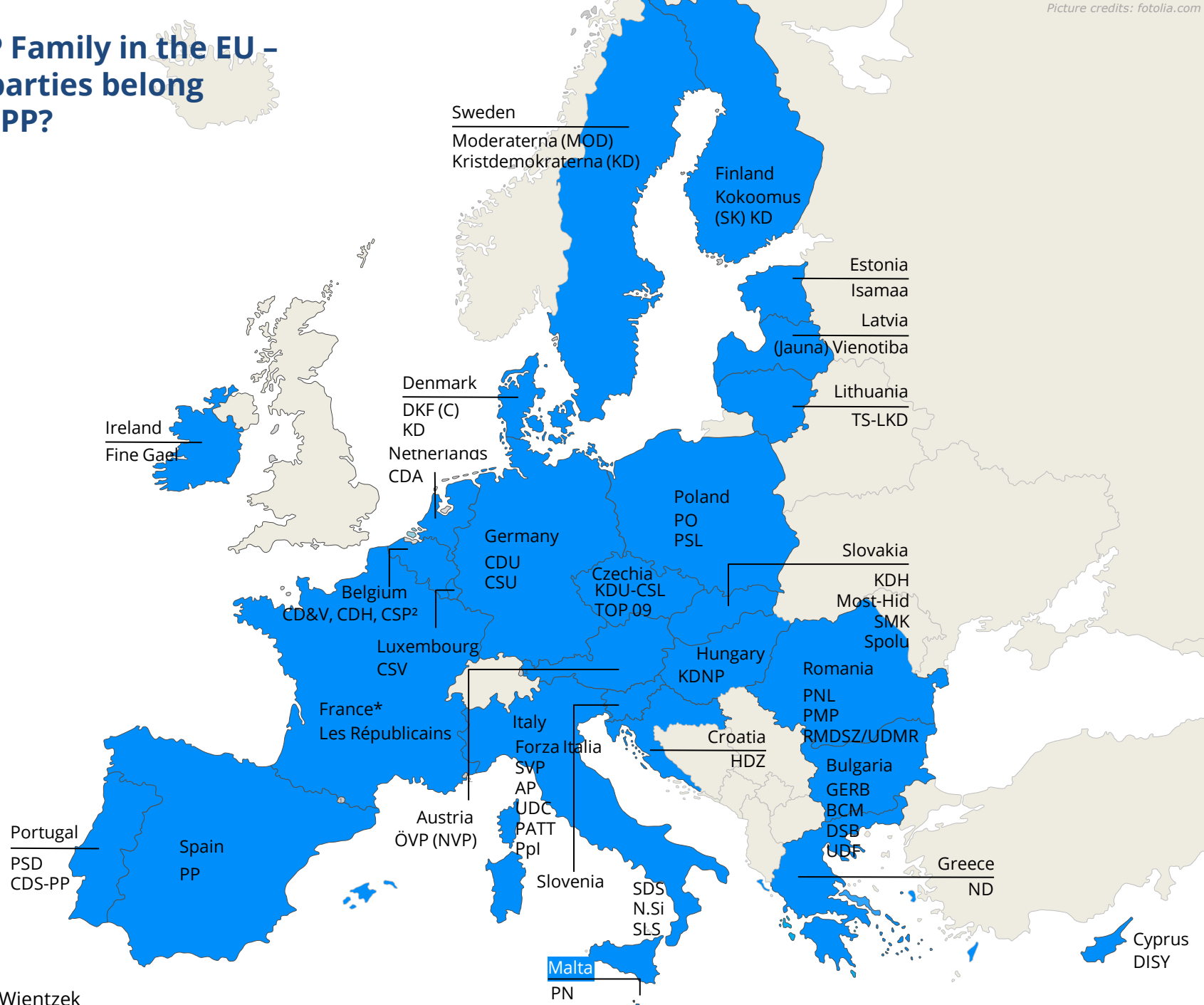


****President Nausėda is independent, prime minister Simonyte is not affiliated with a party but she was the candidate for the office of prime minister on the part of TS-LKD.

** The party of Slovakia's head of government is part of the EPP group in the European Parliament but is not part of the EPP party

*In Bulgaria, an independent interim government is holding office until the elections

The EPP Family in the EU - Which parties belong to the EPP?



Notes

**In France, no polls for national parliamentary elections have been done since the elections in June 2017. The results refer to the second round of parliamentary elections.

In order to obtain an adequate result at national level, these results were each weighted according to the number of eligible voters (there is compulsory voting). Despite compulsory voting and the relatively similar number of voters at elections in the different regions, small deviations may occur. In Belgium, the CD&V, CSP and CDH partner parties only compete regionally. The results in the individual regions are weighted accordingly. The CSP only competes in European elections. At national elections, it is a part of the CDH since the Belgian parliament is composed according to regions (Flanders, Wallonia, Brussels) and not according to language community. In Luxembourg, polls are conducted regionally. The results are weighted according to the number of voters (there is compulsory voting) in order to calculate a party's national strength. Despite compulsory voting and the relatively similar number of voters at elections in the different regions, small deviations may occur.

Further notes:

In several countries, undecided and non-voters are included as part of the total sum (100%) in the polls. The poll results are extrapolated accordingly. Example: Party A has 13% in the polls. 30% of respondents will not vote, and 20% of the respondents are undecided. Accordingly, support for Party A is reported to be 26%.

In **Germany**, the CDU and CSU are not listed as two separate parties owing to the fact they form a single parliamentary bloc and that their poll results are always added together.

In several countries, parties are part of the EPP bloc without belonging to the EPP. Some of them even belong to other party families, for example, CU and 50 Plus in the Netherlands, STAN in Czechia and Olano in Slovakia. Their respective results are given in brackets.

Some of the parties in the ACRE/ECR family are right-wing populist or have strong right-wing populist elements. As the ACRE family is now (or is for the time being) a mainstream party family, the parties belonging to it are listed as part of the ACRE family and not as "right-wing populist". By contrast, the "right-wing populist" category contains parties belonging to the ENF or the EFDD Group in the European Parliament, as well as other right-wing populist or right-wing extremist forces.

1. Slide 16: The list usually refers to the heads of government. Heads of State (in the case of a government of a different party) are only indicated (separately) if they are represented in the European Council (the case of Johannis in Romania). In the case of France, no participation of the EPP in the government is indicated since the official EPP party LR is not in the government.
2. Slide 18: The CSP is not a member of the EPP but is part of the EPP group.

Sources for polls:

Ipsos (Belgium), Trend (Belgium), Voxmeter (Denmark), Kantar /Emnid (Germany), Norstat (Estonia), Kantar TNS (Finland), Harris (France), Pulse/RC (Greece), RedC (Ireland), EMG (Italy), Ipsos (Croatia), Factum (Latvia), Spinter tymai (Lithuania), Sondesfro (Luxembourg), Malta Today (Malta), Ipsos (Netherlands) RA (Austria), Ibris (Poland), Eurosondagem (Portugal), internoder CURS (Romania), Demoskop (Sweden), Focus (Slovakia), Mediana (Slovenia), NC Report (Spain), Kantar (Czechia), Zavecz (Hungary), Pulse (Cyprus)

Contact person

Dr. Olaf Wientzek

Email: olaf.wientzek@kas.de / olwien@hotmail.com